



CONSULTANT:

SEAL: HENRY D MONTAGUE, PE 78172

THIS DRAWING SHALL NOT BE USED FOR CONSTRUCTION PURPOSES UNTIL THE SEAL AND SIGNATURE OF THE RESPONSIBLE REGISTRANT APPEARS ON THE DRAWING, AND PROPER PERMIT FORMS AND RELATED FEES ARE TRANSMITTED BY THE OWNER, OWNER'S AGENT OR CONTRACTOR TO THE AUTHORITY HAVING JURISDICTION.

DATE	ISSUED FOR	REV
10/12/2017	PLANNING SUBMITTAL	
10/27/2017	PEMB COORDINATION	
12/15/2017	PLANNING RE-SUBMITTAL	
12/15/2017	PERMIT	

Project Manager	Drawn
B. COLBURN	N. NGUYEN
Project Leader	Checked
B. COLBURN	M. GOOD
Date	Dept Mgr Approval
10/01/2017	M. GOOD

Client
Palmetto NFM - Hancock Bridge PKWY, LLC.
P.O. BOX 1615
THOMASVILLE, GA 31792
Office: (863) 808-1320
Contact: Jeff Lazenby

Project
DOLLAR GENERAL
4055 Hancock Bridge Parkway
North Fort Myers (Lee County), FL
Section 9, Township 44S., Range 24E.

Drawing Title
EMS LOW VOLTAGE PLAN

DO NOT SCALE DRAWING

Project No.	Drawing No.
JCDT17.0313.00	EMS1

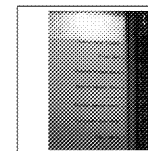
Motion Detector Installation and Wiring

Ceiling mount motion detectors are used to detect motion in the store after business hours. Stock lights will be energized when motion is detected. (2) Detectors are supplied with the CPC equipment...one for the front of the store and one for the stock room.

- Motion detectors require a four conductor cable:
 - (2) wires for 24AC Power - (Red to Red and Black to Black)
 - (1) for Control Signal Normally Open Contact (Yellow to Green)
 - (1) for Control Common (Orange to White)

*****Do not use the green wire from Motion Detector*****

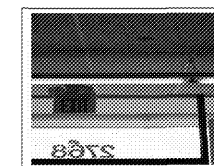
- Pull a 4 conductor cable from the motion detectors to the CPC panel and terminate at the terminal strip according to the wiring legend.



The **Yellow and Orange** wires for each sensor shall be pulled to the CPC input board to the points labeled Motion Sensor Front and Motion Sensor Rear. Polarity does not matter since the motion detector simply feeds the control board with a set of contacts (an Open or Closed signal). For simplicity we recommend connecting the **Yellow** motion detector wire to the Green of the four conductor home run back to the panel... and the **Orange** to the White of the four conductor.



The Red and Black wires shall be pulled to the terminal strip located just above the breaker. This terminal strip provides 24VAC for the sensors.



Example of location for "Front Entrance" Motion Detector

*****Set Dip Switches (2) and (3) in the UP or "ON" Position.** This sets the motion detector for a 20 minute lights activation period anytime motion is detected***

To test the sensors once installed, cover the sensors with duct tape (or something similar). Go to the E2 controller. The status of the motion detectors can be viewed on the "Home" screen. If you are not sure if you are on the "Home" screen, simply press the button with the house on it. The bottom center of the screen has a section called Sensor Control...the motion detectors are defined as Motion Front and Motion Rear. With the motion sensor covered in tape the E2 should read "OFF" for the appropriate sensor. This indicates that no motion is detected. By removing the tape, the detector should sense motion and the E2 should read "ON".

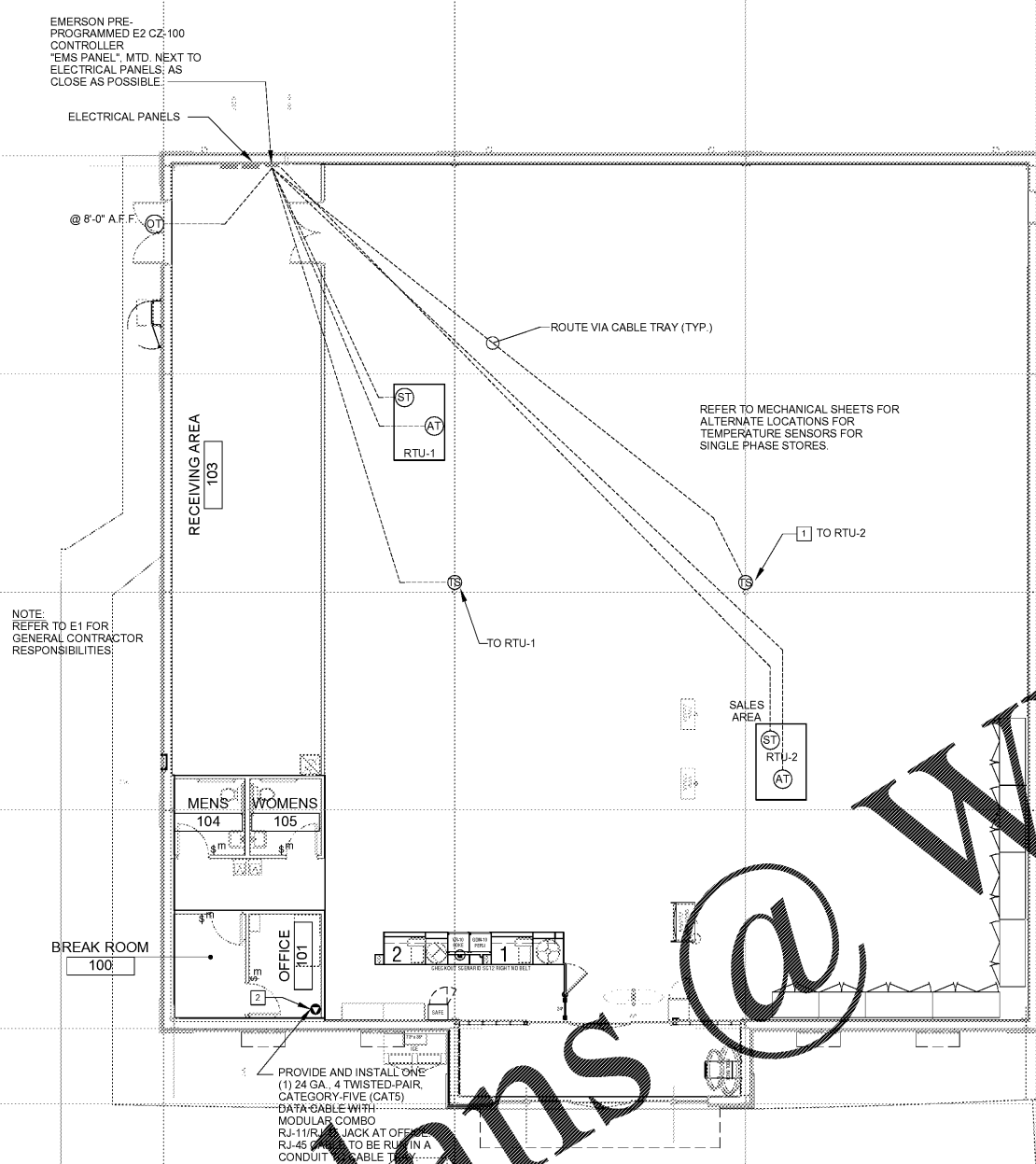
For quickness in testing the sensors, I recommend setting dip switches 1, 2, and 3 in the up or "ON" position. This sets the motion detector for a 30 second delay. This means that the sensor will wait 30 seconds before it sends the E2 a change of state between motion and no motion. (Be patient). **Power to the motion detector must then be reset (this allows the motion detector to accept the new dip switch settings.)**

*****Important*****When you are complete with the test you must set the dip switches in the correct position for normal operation...(2, and 3 in the up or "ON" position for a 20 minute delay). **Power to the motion detector must then be reset (this allows the motion detector to accept the new dip switch settings.** Failure to move dip switches to correct position will cause the Stock Lights to short cycle.

2 MOTION DETECTOR INSTALLATION AND WIRING NOTES NOT TO SCALE

QTY.	SYMBOL	DESCRIPTION	CABLE TYPE	SUPPLIED BY:	INSTALLED BY:	NOTES
2	ⒶT	AHU TERMINAL STRIP	8C T-STAT CABLE	EMS SUPPLIER	GENERAL CONTRACTOR	QTY. ONE (1) PER HVAC UNIT.
1	ⒺT	OUTDOOR AIR TEMP MTD. @ 8'-0" A.F.F.	BELDEN 8761 OR EQUIVALENT (22AWG, 2C, STRANDED, SHIELDED)	EMS SUPPLIER	GENERAL CONTRACTOR	QTY. ONE (1) PER RECEIVING ENTRY.
2	ⒺS	SUPPLY TEMP (501-1121) MTD. IN SUPPLY DUCT	BELDEN 8761 OR EQUIVALENT (22AWG, 2C, STRANDED, SHIELDED)	EMS SUPPLIER	GENERAL CONTRACTOR	QTY. ONE (1) PER HVAC UNIT.
2	ⒺS	TEMPERATURE SPACE SENSOR (809-6590) MTD. @ 8'-0" A.F.F.	BELDEN 8761 OR EQUIVALENT (22AWG, 2C, STRANDED, SHIELDED)	EMS SUPPLIER	GENERAL CONTRACTOR	QTY. ONE (1) PER HVAC UNIT ZONE.
1	Ⓐ	RJ-11/RJ-45 DATA JACK, PHONE COMBO.	24 GA. 4 TWISTED-PAIR, CATEGORY-FIVE (CAT 5) DATA CABLE.	GENERAL CONTRACTOR	GENERAL CONTRACTOR	QTY. ONE (1) AT OFFICE COMPUTER CART.
4	\$m	MOTION SENSOR SWITCH.	LEVITON EZ-FIND ODS-10-IDW	GENERAL CONTRACTOR	GENERAL CONTRACTOR	QTY. ONE (1) PER BREAK ROOM. QTY. ONE (1) PER OFFICE. QTY. ONE (1) PER MEN'S RESTROOM. QTY. ONE (1) PER WOMEN'S RESTROOM.

REQUIRED NATIONAL ACCOUNT VENDORS		CONTACT INFORMATION SUBJECT TO CHANGE	
CONTACTS		PHONE #	REQUIRED ITEMS
EMERSON CLIMATE TECHNOLOGIES	WEBSITE http://dollargeneralbid.ectolutions.net	USER NAME: dollargeneralbid	EMS SUPPLIER NOTE: CUSTOMIZED DOLLAR GENERAL EMS PANEL REQUIRES STORE #, CITY, STATE, ZIP CODE & QTY. FOR HVAC UNITS OF THE INSTALL SITE WHEN ORDERING. EMS SYSTEMS INSTALLATION GUIDE WITH PHOTOS IS AVAILABLE ON NATIONAL ACCOUNT WEBSITE. ALL QUESTIONS PERTAINING TO THE EMS PANEL, SYSTEM INSTALLATION & SETUP SHOULD BE DIRECTED TO EMERSON'S DOLLAR GENERAL SUPPORT TEAM AT 770-425-2724.
		PASSWORD: dollargeneralbid	



SENSOR PLAN KEYED NOTES

1 ALWAYS INSTALL THE SENSORS @ 8'-0" H. THE EXACT MOUNTING LOCATION OF THE HVAC SENSORS "TS" MAY VARY DEPENDING ON THE STORE LAYOUT AND DUCT CONFIGURATION. REFER TO SITE SPECIFIC MECHANICAL DRAWING FOR HVAC ZONED SENSOR MOUNTING LOCATIONS. IF SENSORS ARE MOUNTED ON EXTERIOR WALLS DUE TO CONFIGURATION, THEY ARE THEN TO BE INSULATED TO PREVENT AIR INFILTRATION. IF ADDITIONAL HVAC UNITS ARE INSTALLED ADD ADDITIONAL TEMPERATURE SENSORS "TS".

2 PROVIDE AND INSTALL ONE (1) 24 GA. 4 TWISTED-PAIR, CATEGORY-FIVE (CAT5) DATA CABLE WITH MODULAR COMBO RJ-11/RJ-45 JACK AT OFFICE COMPUTER CART AND ONE (1) AT REGISTER. 24 GA. CAT 5. PAIR TWISTED PAIR WIRE ONLY. USE BLUE AND BLUE & WHITE WIRE. HOOK UP LINE #1 TERMINAL IN RJ-11 JACK EACH PHONE JACK TO HAVE DEDICATED. SEPARATE HOME RUN TO DMARC LABEL AS "PHONE" AT THE DESTINATION AND AT DMARC. PHONE COMPANY PROVIDES FINAL HOOK UP TO DMARC ONLY. PHONE LINE #2 - RJ-11 PHONE JACK SUPPLIED AND WIRED BY CONTRACTOR.

1 EMS VOLTAGE PLAN
SCALE: 1/8" = 1'-0"

Plans @ WWW.LDIDLIVING.COM