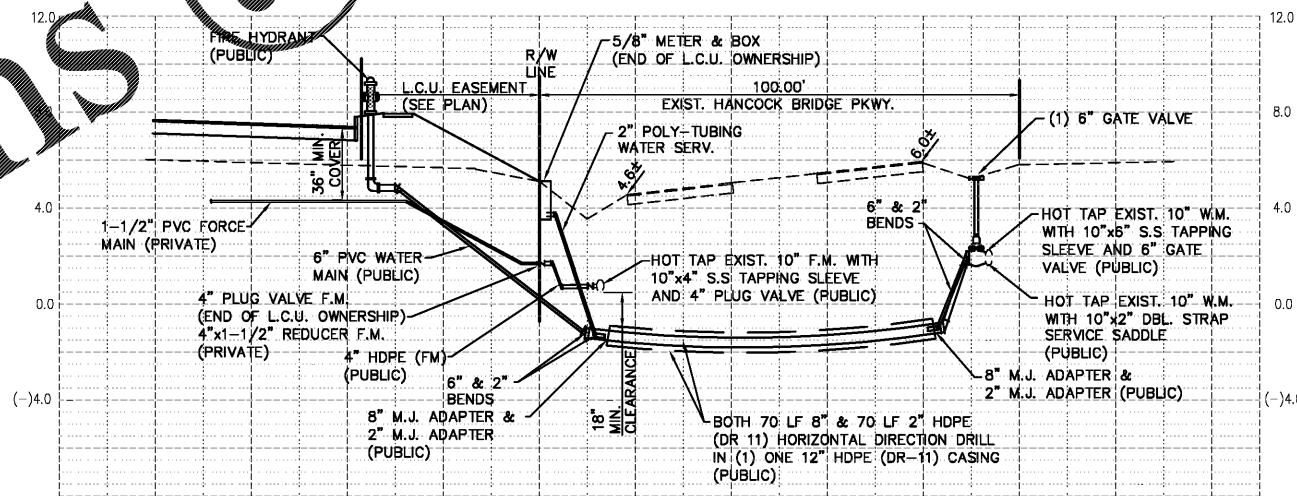
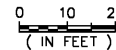
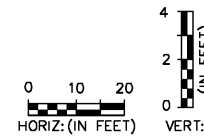


DIRECTIONAL BORE PLAN



DIRECTIONAL BORE PROFILE



BID SET
(NOT FOR CONSTRUCTION)
01/26/18

Order Plans @

WWW.LDILine.com

DATE	BY	REVISION DESCRIPTION
10/19/17	BS	COUNTY E.O. INITIAL SUBMITTAL
12/19/17	BS	COUNTY COMMENTS 11/15/17
01/12/18	BS	PER LCU COMMENTS
01/26/18	BS	BD SET

AVALON ENGINEERING, INC.
2503 DEL PRADO BLVD. #200
CAPE CORAL, FLORIDA 33904
(239) 573-2077
FBPE#3128

DEVELOPER:
Palmetto Capital Group, LLC
1643 Williamsburg Square
Lakeland, Florida 33803
(863) 808-1320

DOLLAR GENERAL
4055 HANCOCK BRIDGE PARKWAY
LEE COUNTY, FLORIDA

**DIRECTIONAL BORE
PLAN AND PROFILE**