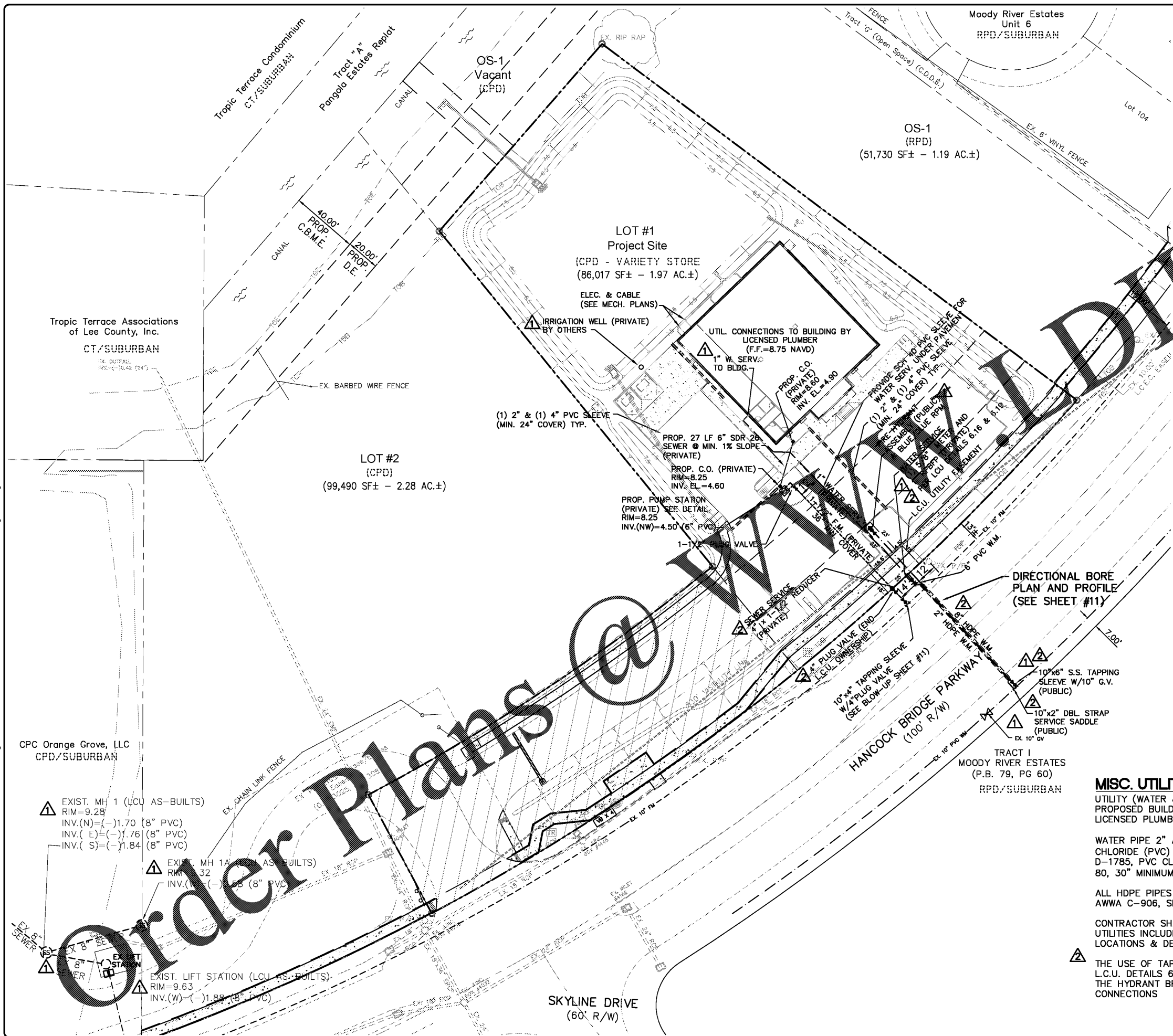


P:\CAD\2017\17-108\CONSTRUCTION\17-108 UTILITY.dwg, 10 UTILITY PLAN, 1/26/2018 8:09:05 AM, Avalon Engineering Inc.



FIRE FLOW REQUIRED:

BUILDING TYPE (II-B)
7,500 TOTAL SF (1 STORY TYPICAL)
REQUIRED FIRE FLOW = 1,750 GPM

FIRE HYDRANT TEST RESULTS:

Board of Commissioners
County Engineer
County Clerk
County Auditor
County Assessor
County Administrator

NEMFD
NORTH FLORIDA FIRE FIGHTERS ASSOCIATION
P.O. Box 3207 • 2800 Trail Drive
N. Ft. Myers, FL 33918-0327
(888) 751-7650

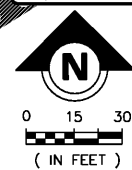
Measurement Name: Fireflow
Address: 1 Property
Measurement Type: Fireflow
Measurement Date: 1/26/2017
Measurement Time: 10:00 AM
Measurement Location: 228-567-4062

Hydrant Flow Test By Hydrant
Hydrant Number = "520214" and Date Between
{10/11/2017} and {10/11/2017}

Station	Needle	Pressure	Flow	Static	Residual	Flow	Static	Residual
228214	228214	100	1750	100	100	100	100	100

Subtotal Flow Factor: 1
Total Flow Factor: 1

3/2/2017 3:42:51 Page 2



DATE	BY	REVISION DESCRIPTION
10/19/17	BS	COUNTY A.C. INITIAL SUBMITTAL
12/19/17	BS	COUNTY COMMENTS 11/15/17
01/23/18	BS	PER LCU COMMENTS
01/26/18	BS	REV SET

DEVELOPER:
AVALON ENGINEERING, INC.
2503 DEL PRADO BLVD. #700
CAPE CORAL, FLORIDA 33904
(863) 808-1320

DOLLAR GENERAL
4055 HANCOCK BRIDGE PARKWAY
LEE COUNTY, FLORIDA

UTILITY PLAN
(WATER - SEWER)

#17-108/CONST
10 of 15

MISC. UTILITY NOTES:

UTILITY (WATER & SEWER) CONNECTIONS TO PROPOSED BUILDING TO BE INSTALLED BY LICENSED PLUMBER.

WATER PIPE 2" AND SMALLER TO BE POLYVINYL CHLORIDE (PVC) AND SHALL CONFORM TO ASTM D-1785, PVC CLASS 1120 OR 1220 SCHEDULE 80, 30" MINIMUM COVER.

ALL HDPE PIPES ARE TO BE PE3408, RATED PER AWWA C-906, SDR-11

CONTRACTOR SHALL VERIFY EXISTING COUNTY UTILITIES INCLUDING WATER MAIN & FORCE MAIN LOCATIONS & DEPTHS PRIOR TO CONSTRUCTION

THE USE OF TAPPING SLEEVES AND VALVES PER L.C.U. DETAILS 6.1 AND 6.2 ARE REQUIRED FOR THE HYDRANT BRANCH LINE AND FORCE MAIN CONNECTIONS

BID SET
(NOT FOR CONSTRUCTION)
01/26/18