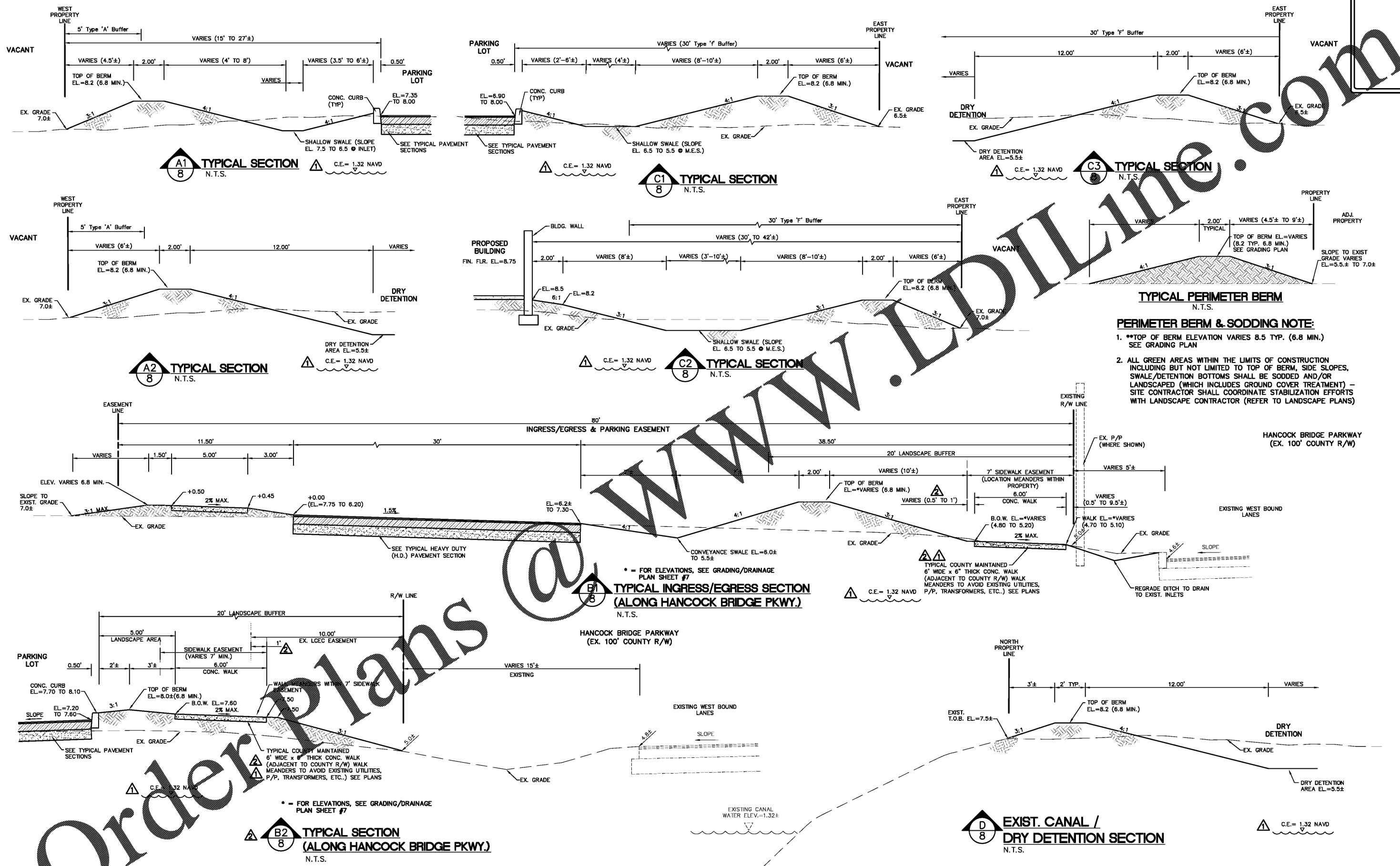


P:\CAD\2017\17-108\CONSTRUCTION\17-108\_DTL-SECTIONS.dwg, 8 TYPICAL, 1/26/2018 8:08:54 AM, Avalon Engineering Inc.



**PERIMETER BERM & SODDING NOTE:**

- \*\*TOP OF BERM ELEVATION VARIES 8.5 TYP. (6.8 MIN.) SEE GRADING PLAN
- ALL GREEN AREAS WITHIN THE LIMITS OF CONSTRUCTION INCLUDING BUT NOT LIMITED TO TOP OF BERM, SIDE SLOPES, SWALE/DETENTION BOTTOMS SHALL BE SODDED AND/OR LANDSCAPED (WHICH INCLUDES GROUND COVER TREATMENT) - SITE CONTRACTOR SHALL COORDINATE STABILIZATION EFFORTS WITH LANDSCAPE CONTRACTOR (REFER TO LANDSCAPE PLANS)

ALL EXISTING AND PROPOSED GRADES SHOWN REFER TO N.A.V.D. 1988.

BID SET  
(NOT FOR CONSTRUCTION)  
01/26/18

DATE	BY	REVISION DESCRIPTION
10/19/17	BS	COUNTY A.C. INITIAL SUBMITTAL
12/12/17	BS	COUNTY COMMENTS 11/15/17
01/23/18	BS	CAPE CORAL, FLORIDA 33904
01/26/18	BS	PER IGI COMMENTS
		REV. SET

DEVELOPER: Capital Group, LLC  
Pamella, Capital Group, LLC  
2503 DEL PRADO BLVD. #200  
Lakeland, Florida 33803  
(863) 808-1320

**DOLLAR GENERAL**  
TYPICAL SECTIONS  
4055 HANCOCK BRIDGE PARKWAY  
LEE COUNTY, FLORIDA

Brannon D. Sloan  
FL LICENSE # 69978