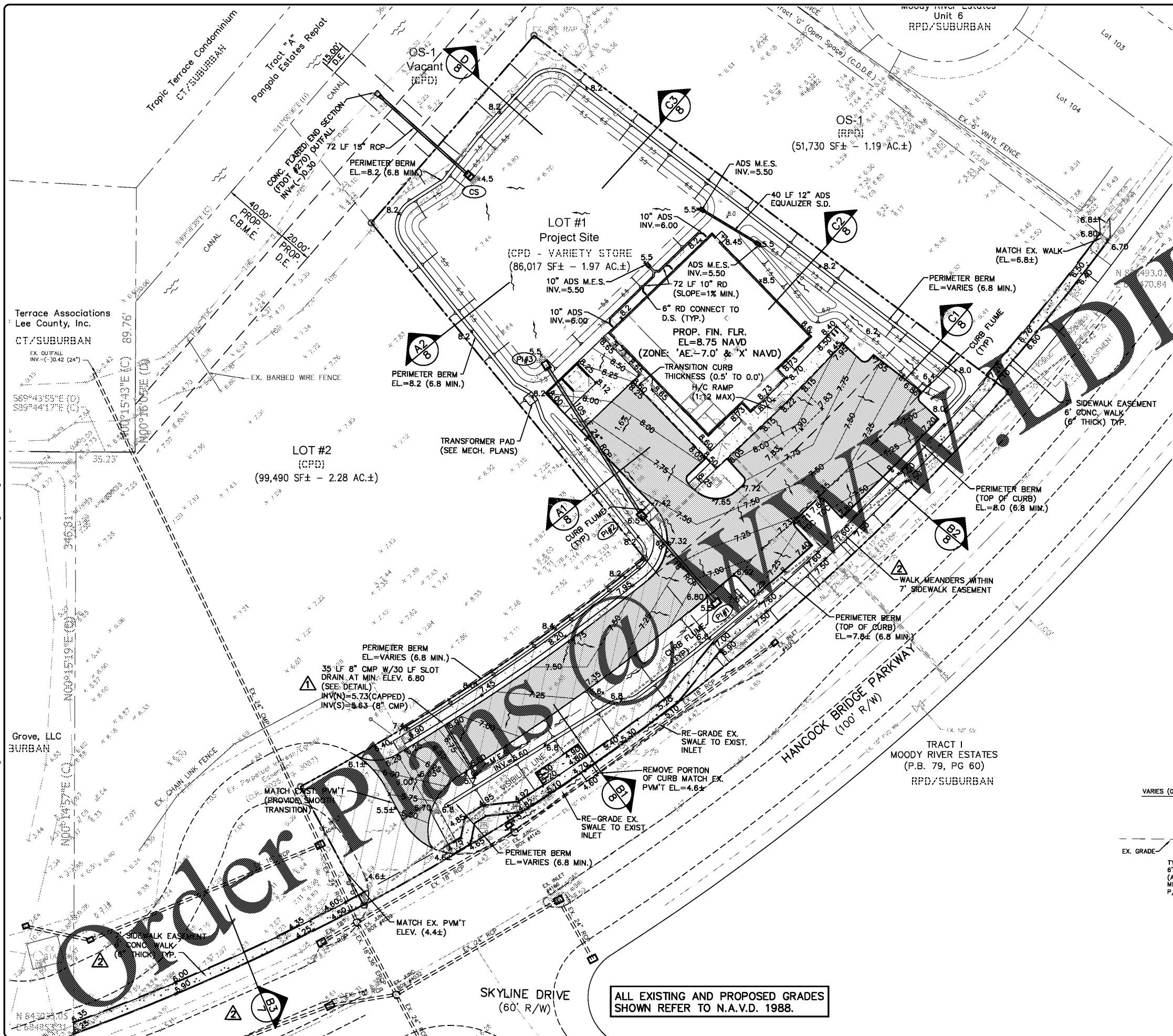


P:\CAD\2017\17-108\CONSTRUCTION\17-108\_PGD.dwg, 7 PAVING GRADING, 1/26/2018 8:08:46 AM, Avalon Engineering Inc.



**DRAINAGE STRUCTURE DATA**

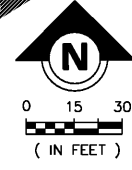
PI#1  
 PROP. INLET TYPE 'E'  
 W/SWALE GRATE  
 GRATE=5.50  
 INV(NW)=2.60 (18" RCP)  
 SUMP=0.60

PI#2  
 PROP. INLET TYPE 'E'  
 W/SWALE GRATE (SEE DETAIL)  
 GRATE=6.50  
 INV(SE)=2.20 (18" RCP)  
 INV(NW)=2.20 (24" RCP)

PI#3  
 PROP. INLET TYPE 'E'  
 W/SWALE GRATE (SEE DETAIL)  
 GRATE=7.25  
 12"x30" SLOT (NW)=5.50  
 INV(SE)=1.80 (24" RCP)  
 SUMP=(-)0.20

CS  
 (CONTROL STRUCTURE - SEE DETAIL)  
 PROP. INLET TYPE 'E'  
 W/SWALE GRATE  
 GRATE=7.50  
 WEIR WALL TOP=6.80  
 3" BLEEDER INV=1.32  
 12"x30" SLOT (SE)=4.50  
 INV(NW)=(-)0.10 (15" RCP)  
 SUMP=(-)2.10

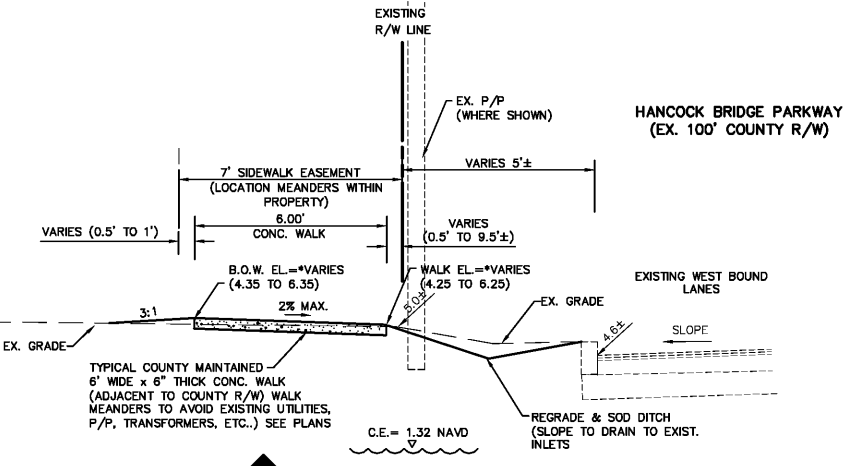
NOTE:  
 CONNECTIONS TO ROOF DRAINING  
 (BY OTHER)



**DRAINAGE SUMMARY**

Water Quality	
Control Elevation (ft)	1.32
Water Quality Volume Required (ac-ft)	0.19
Water Quality Volume Provided (ac-ft)	0.48
5 Year 1 Day Storm Event	
Rainfall (in)	5.50
Peak Stage (ft)	5.87
Minimum Parking Lot Elevation (ft)	5.90
25 Year 3 Day Storm Event	
Rainfall (in)	11.20
Allowable Discharge (cfs)	0.20
Design Discharge** (cfs)	0.50
Peak Stage (ft)	6.79
Minimum Berm (ft)	6.80
100 Year 3 Day Storm Event	
Rainfall (in)	14.20
FEMA Elevation (ft)	7.00
Peak Stage (ft)	7.94
Minimum Building Finished Floor (ft)	8.00

\*Allowable discharge rate is 0.1 cfs/acre.  
 \*\*Design Discharge rate through 3" bleeder only.  
 Note: All Elevations are in NAVD, NGVD to NAVD -1.18'  
 Note: Conversion from NGVD to NAVD -1.18'



**6' WALK SECTION (ALONG HANCOCK BRIDGE PKWY.)**

ALL EXISTING AND PROPOSED GRADES SHOWN REFER TO N.A.V.D. 1988.

BID SET  
 (NOT FOR CONSTRUCTION)  
 01/26/18

**REVISION DESCRIPTION**

DATE	BY	REVISION DESCRIPTION
01/26/18	BS	INITIAL SUBMITTAL
01/26/18	BS	LA COUNTY COMMENTS 11/25/17
01/26/18	BS	LA COUNTY COMMENTS 01/25/18
01/26/18	BS	LA COUNTY COMMENTS 01/26/18

**DEVELOPER:**  
 Palmello Capital Group, LLC  
 2503 DEL PRADO BLVD. #200  
 LAKELAND, FLORIDA 33803  
 (863) 808-1320

**DOLLAR GENERAL**  
 4055 HANCOCK BRIDGE PARKWAY  
 LEE COUNTY, FLORIDA

**PAVING, GRADING AND DRAINAGE PLAN**

17-108/CONST

7 of 15

Brannon D. Sloan  
 FL LICENSE # 69978