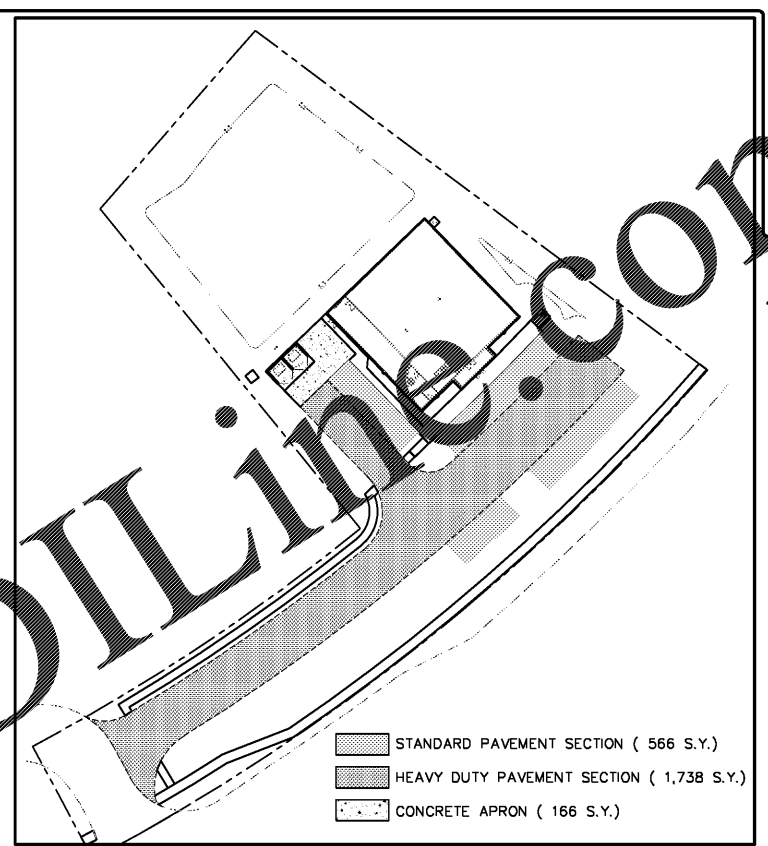
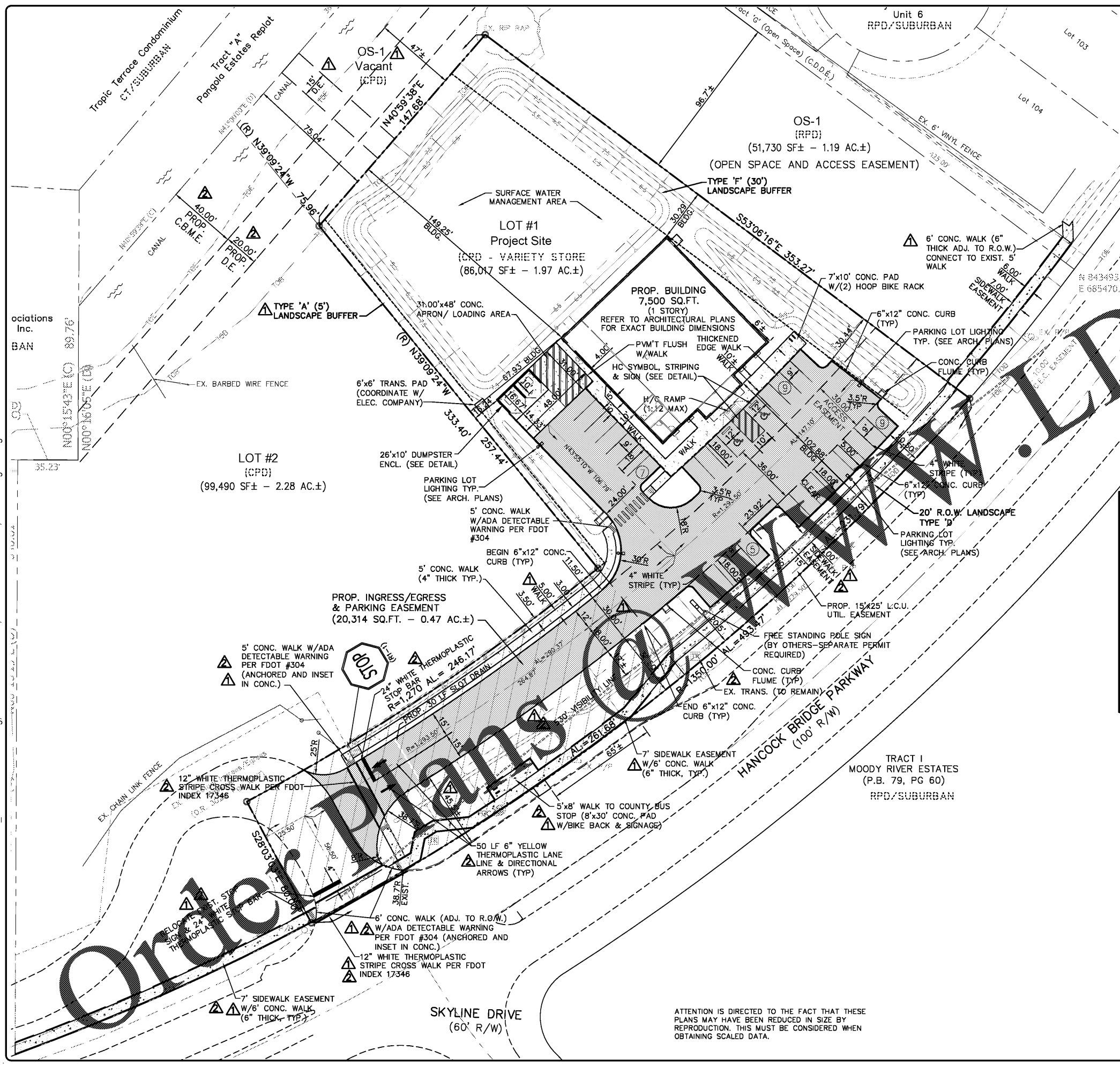
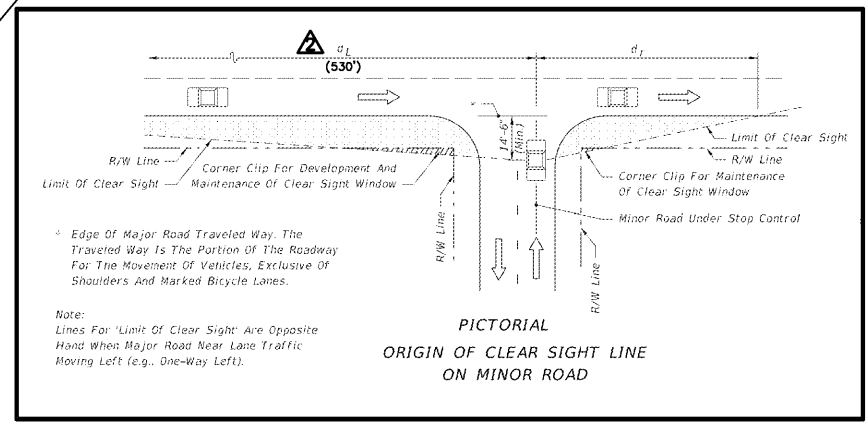


P:\CAD\2017\17-108\CONSTRUCTION\1717-108_SITE-DIMENSION.dwg, 5B SITE DIMENSION, 1/26/2018 8:19:23 AM, Avalon Engineering Inc.



PAVEMENT SHADE KEYMAP
N.T.S.



VISIBILITY LIMIT DETAIL
N.T.S.

PROJECT SITE PARAMETERS

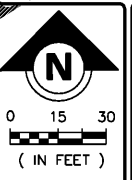
LOT #1 PROJECT SITE:	86,017 SF 1.97 AC. ±	(100%)
(INCL. 20,314 SF INGRESS/EGRESS EASEMENT)		
BUILDING:	7,500 SF	0.17 AC. (9%)
PAVEMENT:	20,827 SF	0.48 AC. (24%)
CONCRETE APRONS:	1,488 SF	0.03 AC. (2%)
(LOADING AREA 1,055 SF, DUMPSTER 433 SF)		
CONCRETE WALKS:	5,647 SF	0.13 AC. (6%)
LANDSCAPE AREA:	50,555 SF	1.16 AC. (59%)
TOTAL IMPERVIOUS AREA:	35,462 SF	0.81 AC. (41%)
TOTAL PERVIOUS AREA:	50,555 SF	1.16 AC. (59%)

PARKING REQUIRED: 30 SPS.
(1 SP. PER 250 SF / 7,500 SF)
PROVIDED: 30 SPS. (INCL. 2 H/C)

BICYCLE PARKING:
REQUIRED: 1.5 SPACES
(5% OF TOTAL PARKING x 30 SPS.)
PROVIDED: 2 SPACES (SEE DETAIL)

BID SET
(NOT FOR CONSTRUCTION)
01/26/18

ATTENTION IS DIRECTED TO THE FACT THAT THESE PLANS MAY HAVE BEEN REDUCED IN SIZE BY REPRODUCTION. THIS MUST BE CONSIDERED WHEN OBTAINING SCALED DATA.



Brendon D. Sloan
FL. LICENSE # 69978

DATE	BY	REVISION DESCRIPTION
10/16/17	BS	COUNTY A.G. INITIAL SUBMITTAL
12/19/17	BS	COUNTY COMMENTS 11/15/17
01/27/18	BS	COUNTY COMMENTS 11/15/17
01/27/18	BS	PER LOG COMMENTS
01/26/18	BS	REV SET

DEVELOPER:
AVALON ENGINEERING, INC.
2503 DEL PRADO BLVD. #200
CAPE CORAL, FLORIDA 33904
(863) 808-1320
FBPE#128 (239) 573-2077

DEVELOPER:
Pometto, Condit Group, LLC
1643 Williamsburg Square
Lakeland, Florida 33803
(863) 808-1320

DOLLAR GENERAL
4055 HANCOCK BRIDGE PARKWAY
LEE COUNTY, FLORIDA

SITE DIMENSION PLAN