

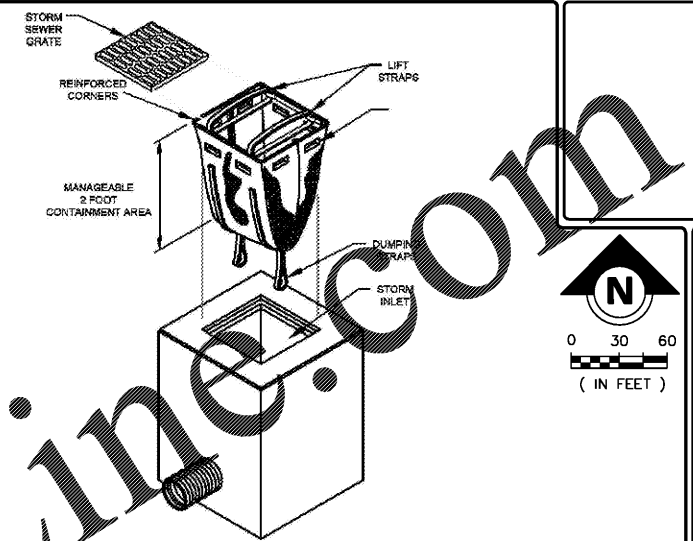
P:\CAD\2017\17-108\CONSTRUCTION\BMP-MAP.dwg, 3 EXISTING SITE CONDITIONS, 1/26/2018 8:08:19 AM, Avalon Engineering Inc.



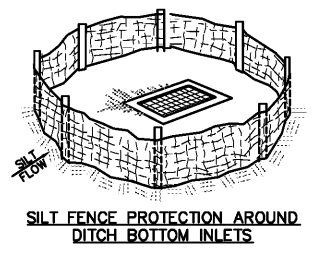
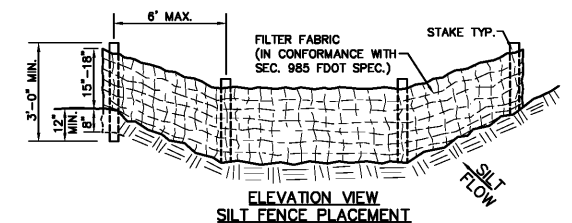
EXISTING SURFACE HYDROLOGY MAP
Scale: 1"=60'

STORM WATER POLLUTION NOTES

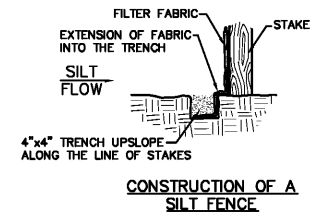
- THE CONTRACTOR SHALL ADHERE TO THE SEQUENCE OF OPERATIONS FOR EROSION CONTROL IMPLEMENTATION HEREON. ANY DEVIATION FROM THIS SEQUENCE DEEMED NECESSARY BY THE CONTRACTOR SHALL BE APPROVED BY THE OWNER.
- THE GENERAL CONTRACTOR AND ALL SUBCONTRACTORS INVOLVED WITH THE CONSTRUCTION ACTIVITIES RELATED TO EROSION CONTROL AS SHOWN OR NOTED HEREON SHALL OBTAIN A COPY OF THE STORM WATER POLLUTION PREVENTION PLAN (SWPPP), AS WELL AS THE NATIONAL POLLUTANT DISCHARGE ELIMINATION SYSTEM (NPDES) PERMIT FOR THIS SITE, AND BECOME FAMILIAR WITH THEIR CONTENTS.
- ALL WASH WATER SHALL BE DISPOSED OF IN A MANNER THAT PREVENTS CONTACT BETWEEN WASH WATER POLLUTANTS AND STORM RUNOFF DISCHARGED FROM THIS SITE.
- OIL AND GREASE ABSORBING MATERIALS SHALL BE READILY AVAILABLE ON-SITE AND SHALL BE PROMPTLY USED TO CONTAIN AND/OR CLEAN UP ALL FUEL OR CHEMICAL SPILLS OR LEAKS.
- DUST CONTROL SHALL BE ACCOMPLISHED BY WATERING DRY, EXPOSED AREAS ON A REGULAR BASIS. SPRAYING OF PETROLEUM BASED OR TOXIC LIQUIDS FOR THIS IS PROHIBITED.
- ALL COUNTY RIGHT-OF-WAYS THAT ARE DISTURBED DURING CONSTRUCTION SHALL BE PERMANENTLY SODDED PRIOR TO THE COMPLETION OF THE PROJECT.
- DISTURBED AREAS OF THE SITE WHERE CONSTRUCTION AREAS HAVE PERMANENTLY CEASED SHALL BE PERMANENTLY SEEDDED OR SODDED, AS SHOWN ON THE ATTACHED PLAN, WITHIN FOURTEEN DAYS.
- ALL VEHICLES SHALL BE CLEANED AT THE CONSTRUCTION SITE PRIOR TO EXITING.
- ALL MATERIALS SPILLED, DROPPED, WASHED OR TRACKED ONTO ADJACENT ROADWAYS BY VEHICLES EXITING THE SITE SHALL BE CLEANED OR REMOVED IMMEDIATELY.
- THE CONTRACTOR SHALL BE RESPONSIBLE FOR PROMPT REMOVAL OF ALL ACCUMULATED SILT IN THE STORM SEWER SYSTEM AND ALONG SILT FENCES.
- SILT FENCES SHALL BE PLACED AROUND ANY STOCKPILES USED ON THIS SITE.
- ANY ADDITIONAL EROSION CONTROL MEASURES REQUIRED TO ENSURE COMPLIANCE WITH THE U.S.E.P.A.; FLORIDA DEP AND LEE COUNTY POLLUTION REGULATIONS SHALL BE IMPLEMENTED BY THE CONTRACTOR, AT NO ADDITIONAL COST TO THE OWNER.
- ALL TEMPORARY EROSION CONTROL MEASURES SHALL BE REMOVED AND PROPERLY DISPOSED OF OFF-SITE WITHIN THIRTY DAYS AFTER STABILIZATION OF ALL SURFACES.
- THE CONTRACTOR SHALL ASSUME LIABILITY FOR DAMAGE TO ADJACENT PROPERTIES AND/OR PUBLIC RIGHT-OF-WAY RESULTING FROM FAILURE TO FULLY IMPLEMENT AND EXECUTE ALL EROSION CONTROL PROCEDURES SHOWN AND NOTED IN THE PLANS.
- WHENEVER DIRT, ROCK OR OTHER MATERIALS ARE EXPORTED FOR USE OFF OF THE PRIMARY CONSTRUCTION SITE, THE CONTRACTOR IS RESPONSIBLE FOR DETERMINING THAT EPA STORMWATER PERMITTING REQUIREMENTS ARE MET. PRIOR TO ANY EXPORT OF MATERIALS, THE CONTRACTOR SHALL FURNISH THE ENGINEER WITH A WRITTEN AGREEMENT WITH ANY LANDOWNER WHO WILL RECEIVE EXPORTED MATERIALS, STATING THAT THE SITE WILL BE PROPERLY PERMITTED WHEN REQUIRED AND DESCRIBE THE EROSION CONTROL MEASURES WHICH WILL BE USED. AT A MINIMUM, EROSION CONTROL MEASURES MUST CONSIST OF PERIMETER CONTROLS (SYNTHETIC BALES OR SILT FENCES) ON ALL DOWNSLOPE AND SIDESLOPE BOUNDARIES OF ANY DISTURBED AREAS, PLUS PROVISIONS FOR RE-VEGETATION AFTER THE FILL MATERIALS ARE IN PLACE.
- PRIOR TO CONSTRUCTION FILTER FABRIC SILT FENCE, OR OTHER APPROVED EROSION CONTROL DEVICES SHALL BE INSTALLED ACROSS THE SWALE AT THE LOWEST DISTURBED POINT TO PREVENT EROSION MATERIAL FROM LEAVING THE CONSTRUCTION AREA, INCLUDING ANY VACANT AREAS USED FOR INGRESS AND EGRESS. ALTERNATIVE USES COULD BE GEO-HAY, WADDLES, TERRA TUBES, SEDIMENT LOGS, ETC.
- ALL AFFECTED STORMWATER PIPES, INLETS AND CATCH BASINS SHALL BE PROTECTED BY EROSION CONTROL DEVICES TO PREVENT CONSTRUCTION RELATED EROSION MATERIAL FROM ENTERING THE STORMWATER SYSTEM. SHOULD THE EROSION CONTROLS NOT BE INSTALLED AND/OR FAIL THE CONTRACTOR BE RESPONSIBLE FOR CLEANING THE ENTIRE SYSTEM AS DEEMED NECESSARY BY THE ENGINEER AND LEE COUNTY.
- THE EROSION CONTROL DEVICES SHALL BE INSTALLED PRIOR TO ANY CONSTRUCTION PROCESS AND SHALL REMAIN IN PLACE UNTIL STABILIZED WITH SOD AND THE VACANT AREAS ARE SEEDDED AND MULCHED.
- REFER TO FDOT EROSION AND SEDIMENT MANUAL FOR ADDITIONAL DETAILS, NOTES AND SPECIFICATIONS.



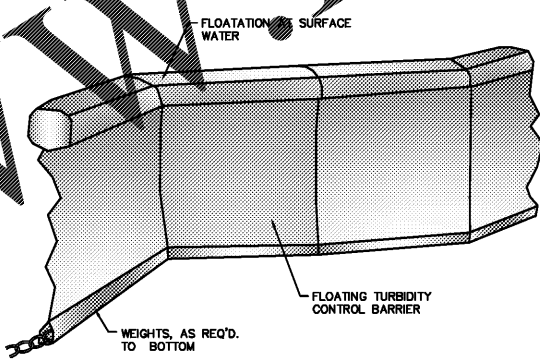
DANDY SACK
TM
NTS



SILT FENCE PROTECTION AROUND DITCH BOTTOM INLETS

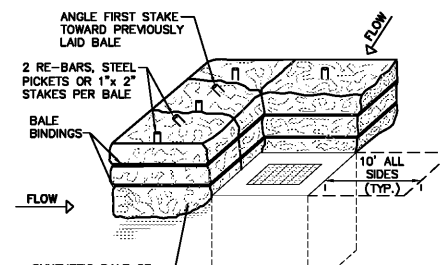


CONSTRUCTION OF A SILT FENCE

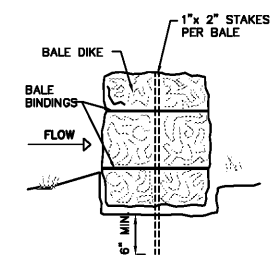


FLOATING TURBIDITY CONTROL BARRIER
DR-SILT-CURTAIN.dwg (2014)
N.T.S.

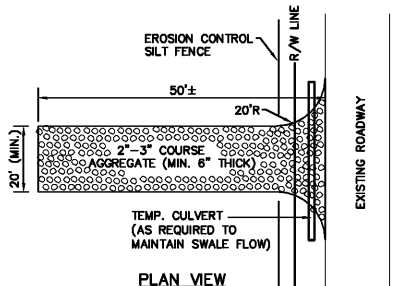
THE CONTRACTOR SHALL BE RESPONSIBLE TO HAVE APPROVED TURBIDITY BARRIERS IN PLACE DURING ANY AND ALL CLEARING, EXCAVATING, JETTING AND BACKFILLING OPERATIONS WHICH TOTALLY ENCLOSES THE CONSTRUCTION SITE. BARRIERS ARE TO REMAIN IN PLACE 24 HOURS MINIMUM AFTER CONSTRUCTION CEASES OR UNTIL TURBIDITY LEVEL IS 29 NTU OR LESS ABOVE THE PRE-CONSTRUCTION TURBIDITY LEVEL. BARRIERS MUST EXTEND FROM THE WATER SURFACE TO THE BOTTOM AND HAVE ADEQUATE WEIGHT TO KEEP THEM IN PLACE DURING ALL OPERATIONS. THERE SHALL BE ADEQUATE FLOTATION AT THE SURFACE TO PREVENT OVERFLOW. THIS FLOTATION MUST BE BRIGHTLY COLORED TO MAXIMIZE VISIBILITY.



ANCHORING DETAIL SYNTHETIC BALE PLACEMENT



BEDDING DETAIL
NOTE: RESTORE ALL INLETS IN R/W WITH SOD ON ALL SIDES (10' TYP.)



PLAN VIEW

- NOTE:
- THE ENTRANCE SHALL BE MAINTAINED IN A CONDITION THAT WILL PREVENT TRACKING OR FLOWING OF SEDIMENT ONTO PUBLIC R/W. THIS MAY REQUIRE TOP DRESSING, REPAIR AND/OR CLEANOUT OF ANY MEASURES USED TO TRAP SEDIMENT.
 - WHEN NECESSARY, WHEELS SHALL BE CLEANED PRIOR TO ENTRANCE ONTO PUBLIC R/W.
 - WHEN WASHING IS REQUIRED, IT SHALL BE DONE ON AN AREA STABILIZED W/ CRUSHED STONE THAT DRAINS INTO AN APPROVED SEDIMENT TRAP OR SEDIMENT BASIN.

TEMP. CONSTRUCTION ENTRANCE
N.T.S.

SOILS

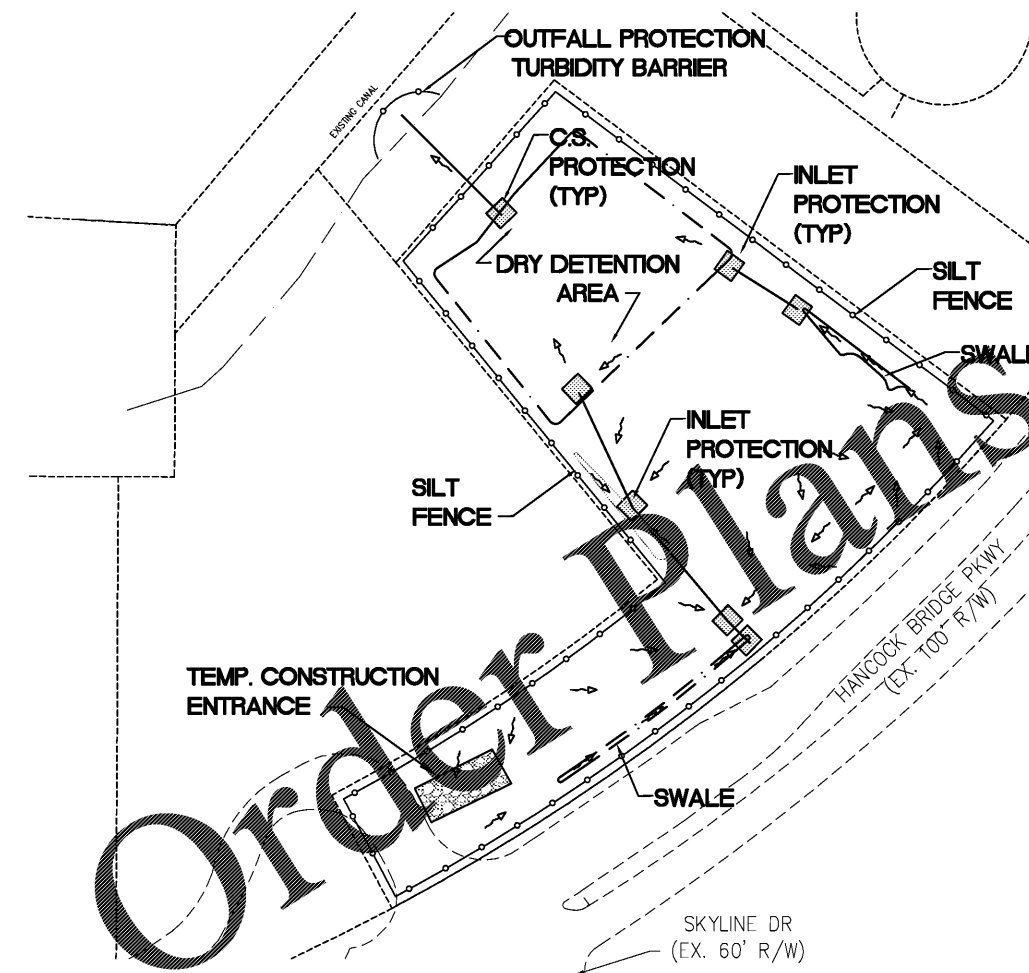
11 MYAKKA FINE SAND

F.L.U.C.C.S.

192 INACTIVE LAND WITH STREET PATTERNS BUT WITHOUT STRUCTURES

STORM WATER POLLUTION LEGEND

- STAKED SILT FENCE
- SURFACE HYDROLOGY
- INLET/OUTFALL PROTECTION
- SWALES AND DRY DETENTION AREAS



B.M.P. MAP
Scale: 1"=60'

DATE	BY	REVISION DESCRIPTION
10/15/17	BS	REVISION
12/19/17	BS	REVISION
01/27/18	BS	REVISION
01/26/18	BS	REVISION

DEVELOPER:	PAVONIA ENGINEERING, INC.
PAVONIA ENGINEERING, INC.	2503 DEL PRADO BLVD. #200
	CAPE CORAL, FLORIDA 33904
	(863) 808-1320

EXISTING SITE CONDITIONS
EROSION-BMP MAP

BID SET
(NOT FOR CONSTRUCTION)
01/26/18

17-108/CONST
3 of 15

Brannon D. Sloan
FL LICENSE # 69978