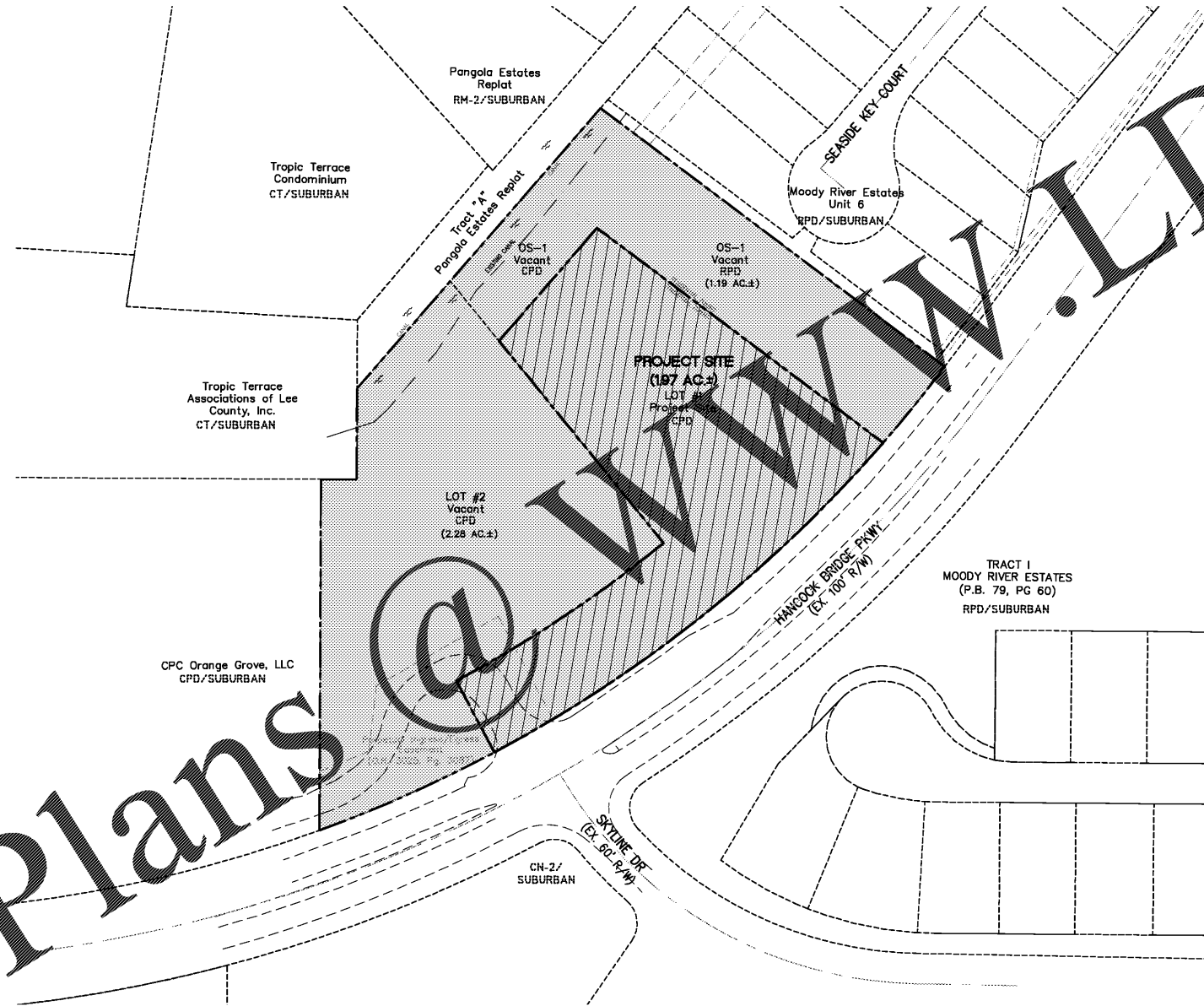
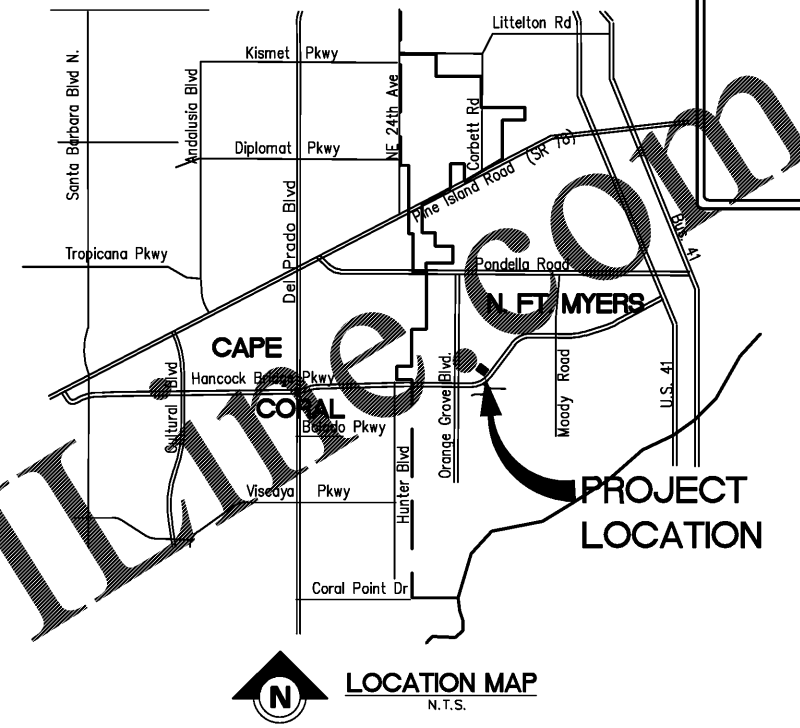


ATTENTION IS DIRECTED TO THE FACT THAT THESE PLANS MAY HAVE BEEN REDUCED IN SIZE BY REPRODUCTION. THIS MUST BE CONSIDERED WHEN OBTAINING SCALED DATA.

DEVELOPMENT ORDER PLANS FOR DOLLAR GENERAL HANCOCK BRIDGE PARKWAY 4055 HANCOCK BRIDGE PARKWAY NORTH FT. MYERS, LEE COUNTY, FLORIDA Section 9, Township 44 S., Range 24 E.



VICINITY MAP
N.T.S.

SITE INFORMATION:

ADDRESS: 4055 HANCOCK BRIDGE PARKWAY
N. FT. MYERS, FL. 33903
STRAP#: 09-44-24-00-01002.1010 (A PORTION OF)
EXISTING ZONING: CPD
LAND USE: SUBURBAN
PLANNING COMMUNITY: NORTH FORT MYERS
FLOOD ZONE: 'AE 7.0' & 'X'
WATER: LEE COUNTY UTILITIES
SEWER: LEE COUNTY UTILITIES
BUILDING HEIGHT: 21'-4" (1 STORY)
BUILDING USE: RETAIL/VARIETY STORE
MAX. FLOOR AREA: 7,500 SQ.FT.
TYPE OF CONSTRUCTION: IIB
FIRE SPRINKLERS: NONE

PARCEL AREA:

- D.O. PROPERTY BOUNDARY: 237,237 SQ.FT. 5.45 AC.±
- LOT #1 PROJECT SITE 86,017 SQ.FT. 1.97 AC.±

INDEX OF SHEETS

- 1 COVER SHEET AND LOCATION MAP
- 2 GENERAL NOTES AND LEGEND
- 3 EXISTING SITE CONDITIONS/EROSION BMP MAP
- 4 DEMOLITION PLAN, NOTES & LEGEND
- 5A MASTER SUBDIVISION PLAN
- 5B SITE DIMENSION PLAN
- 6 TYPICAL SITE & STRIPING DETAILS
- 7 PAVING, GRADING AND DRAINAGE PLAN
- 8 TYPICAL SECTIONS
- 9 INLET & CONTROL STRUCTURE DETAILS
- 10 UTILITY PLAN (WATER - SEWER)
- 11 DIRECTIONAL BORE PLAN AND PROFILE
- 12-13 UTILITY DETAILS (LEE COUNTY UTILITIES)
- 14-15 PUMP STATION DETAILS (PRIVATE)

LANDSCAPE PLAN (BY OTHERS)
SURVEY (BY OTHERS)

PLT #2017-00033
DOS #2017-00089
LCU #2018-00008

BID SET
(NOT FOR CONSTRUCTION)
SET CONTAINS 16 SHEETS 01/26/18

CONSULTANTS:

OWNER/DEVELOPER
PALMETTO NFM-HANCOCK BRIDGE PKWY, LLC.
1643 WILLIAMSBURG SQUARE
LAKELAND, FL. 33803

ARCHITECT/PHOTOMETRICS
STUDIO MANAGER ASSOCIATE
150 W. JEFFERSON AVENUE, SUITE 1300
DETROIT, MI. 48226

CIVIL ENGINEER
AVALON ENGINEERING, INC.
2503 DEL PRADO BLVD. #200
CAPE CORAL, FL. 33904

SURVEYOR
STOUTEN CRAMER PROFESSIONAL SURVEYORS
324 NICHOLAS PARKWAY WEST SUITE 'F'
CAPE CORAL, FL. 33991

ENVIRONMENTAL
J. RIED HARDMAN ECO CONSULTANTS, INC.
213 EAST PARK AVENUE
LAKE WALES, FL. 33853

LANDSCAPE ARCHITECT
LANDESCO
4278 HARBOUR LANE
N. FT. MYERS, FL. 33903

ENGINEER'S CERTIFICATION

WE, AVALON ENGINEERING, INC., CERTIFY THAT THE DOLLAR GENERAL HANCOCK BRIDGE PARKWAY SITE IS NOT IN FLOOD HAZARD ZONE AE-7.0 & 'X' (PER FEMA F.I.R.M. 2006). WE FURTHER CERTIFY THAT SUPERFICIAL SITE INSPECTION HAS SHOWN NO ADVERSE SOIL OR FOUNDATION CONDITIONS. SOIL BORINGS AND BUILDING FOUNDATION ANALYSIS WILL BE REQUIRED PRIOR TO CONSTRUCTION.

Brendon D. Sloan, P.E.
FL. LICENSE# 69978

Brendon D. Sloan
FL. LICENSE# 69978

DATE	BY	REVISION DESCRIPTION
01/26/18	BS	INITIAL SUBMITTAL
01/26/18	BS	FINAL SUBMITTAL
01/26/18	BS	FINAL COMMENTS
01/26/18	BS	FINAL COMMENTS

AVALON ENGINEERING, INC.
2503 DEL PRADO BLVD. #200
CAPE CORAL, FLORIDA 33904
FBPE#3128 (239) 573-2077

DEVELOPER:
Palmetto NFM, LLC
1643 Williamsburg Square
Lakeland, Florida 33803
(863) 808-1320

DOLLAR GENERAL
4055 HANCOCK BRIDGE PARKWAY
LEE COUNTY, FLORIDA

COVER SHEET
LOCATION MAP

#17-108/CONST
1 of 15

P:\CAD\2017\17-108\CONSTRUCTION\17-108_COVER.dwg, 1 COVER SHEET, 1/26/2018 8:08:09 AM, Avalon Engineering Inc.