

KEY NOTES (FOR 1/UL P1.4 ONLY):

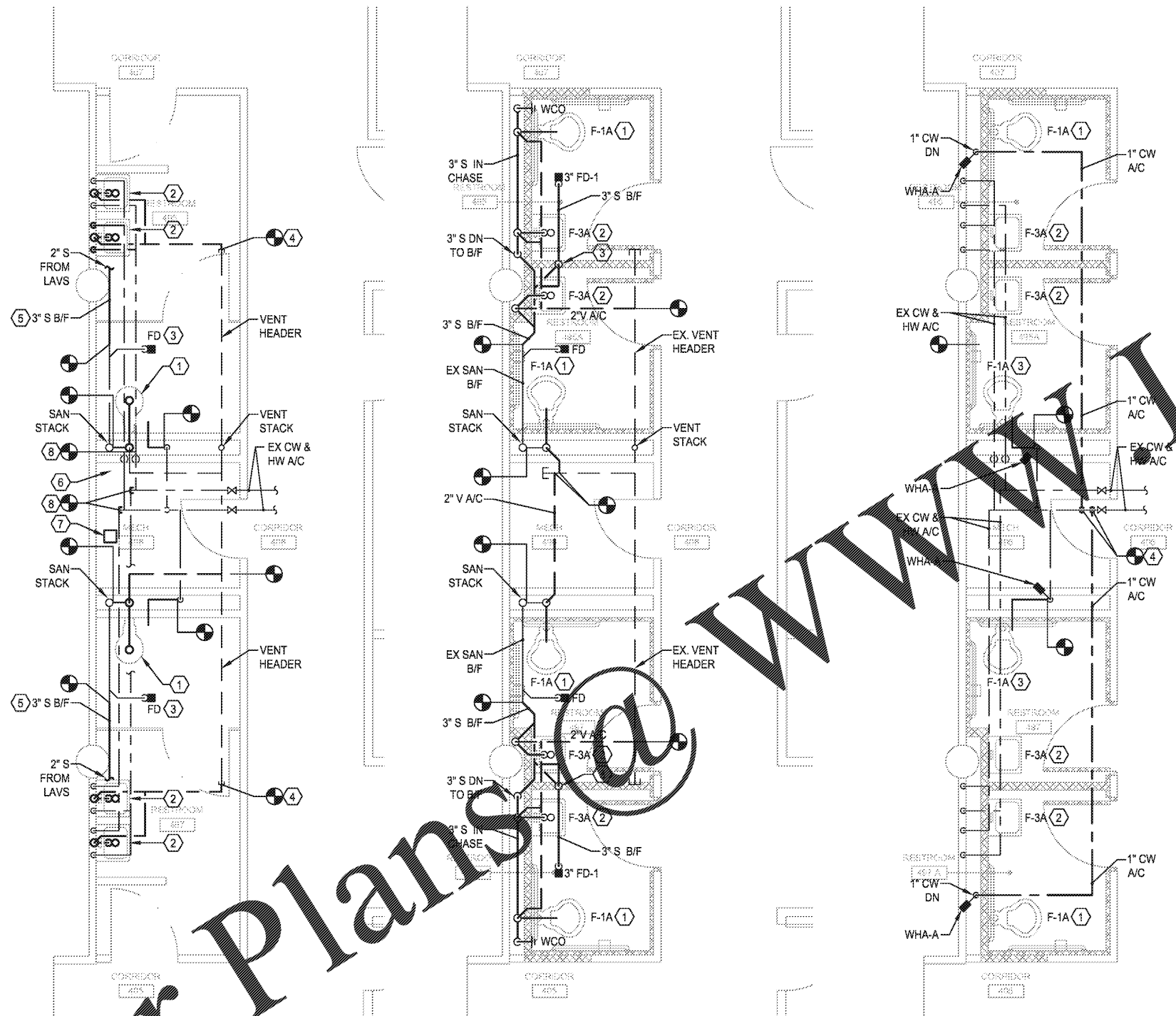
- ① FLOOR-MOUNTED WATER CLOSET, FLUSH VALVE, CW SUPPLY, AND ACCESSORIES SHALL BE DEMOLISHED. SANITARY BRANCH PIPING SERVING THE TOILET SHALL BE DEMOLISHED BACK TO ACTIVE MAIN AND CAPPED FOR FUTURE CONNECTION. FLOOR PENETRATION SHALL BE IN-FILLED WITH CONCRETE.
- ② WALL HUNG LAVATORY, FAUCET, WATER SUPPLIES, P-TRAP, AND ALL ACCESSORIES SHALL BE DEMOLISHED. SANITARY CONNECTION SHALL BE CAPPED. DOMESTIC WATER PIPING ANGLE STOPS AND SUPPLY RISERS SHALL BE DEMOLISHED AND PREPARED FOR CONNECTION TO NEW PIPING.
- ③ EXISTING FLOOR DRAIN SHALL REMAIN.
- ④ VENT PIPING SERVING LAVATORIES SHALL BE DEMOLISHED AND CAPPED FOR FUTURE CONNECTION
- ⑤ SANITARY BRANCH PIPING BELOW FLOOR SHALL BE DEMOLISHED BACK TO THE LOCATION SHOWN.
- ⑥ EXISTING JANITORS SINK SHALL REMAIN. THE DOMESTIC WATER BRANCH PIPING, SANITARY PIPING, AND VENT PIPING SERVING THE JANITORS SINK SHALL REMAIN.
- ⑦ EXISTING AIR COMPRESSOR, PNEUMATIC TUBING, AND CONTROLS SHALL BE REMOVED AND TURNED OVER TO THE OWNER.

KEY NOTES (FOR 2/UL P1.4 ONLY):

- ① 3" SAN, 2" VENT FOR WATER CLOSET. ROUTE SANITARY HORIZONTALLY IN PLUMBING CHASE AS SHOWN.
- ② 2" SAN, 1-1/2" VENT FOR LAVATORY. CONNECT SANITARY TO HORIZONTAL SANITARY PIPING IN PLUMBING CHASE.
- ③ 3" SAN, 2" VENT FOR FLOOR DRAIN.

KEY NOTES (FOR 3/UL P1.4 ONLY):

- ① 1" CW TO WATER CLOSET.
- ② EXTEND 1/2" CW AND 1/2" HW FROM EXISTING WALL TO NEW LAVATORY LOCATION.
- ③ EXTEND COLD WATER PIPING TO NEW PLUMBING FIXTURE. COORDINATE PIPING ELEVATION WITH NEW FLUSH VALVE AND ADA HANDLES.
- ④ CONNECT NEW CW PIPING TO EXISTING CW PIPING. ROUTE TO NEW FIXTURE AS SHOWN.



② SANITARY NEW PLAN - 4TH FL
SCALE: 1/4"=1'-0"

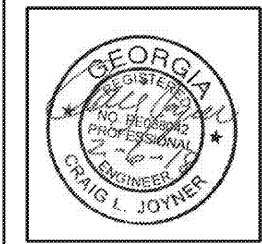
PLUMBING DEMO PLAN - 4TH FL
SCALE: 1/4"=1'-0"

② SANITARY NEW PLAN - 4TH FL
SCALE: 1/4"=1'-0"



© COPYRIGHT 2018 BY THE ARCHITECTURE GROUP, INC. ALL RIGHTS RESERVED.

THIS DRAWING MAY NOT BE USED IN ANY MANNER NOR REPRODUCED IN ANY FORM WITHOUT PRIOR WRITTEN CONSENT FROM THE ARCHITECTURE GROUP, INC.



2018 MRRF CAMPUS-WIDE
ADA IMPROVEMENTS
PROJECT No. IGSU-026-18
TAG PROJECT No. 1706
GEORGIA STATE UNIVERSITY
ATLANTA, GEORGIA

100% CDs	2/5/2017
REVISIONS	
DATE	2/5/2017
DRAWN BY	
CHECKED	
APPROVED	
SCALE	AS NOTED
PROJECT NUMBER	1706
DRAWING TITLE	

PLUMBING PLAN -
URBAN LIFE

DRAWING NUMBER

UL P1.1

Spencer Bristol Engineering, Inc.
A Gray Company
3577 Parkway Lane, Suite 250
Peachtree Corners, Georgia 30092
Tel. 770.414.1628 Fax 770.414.6024
SBE Project No. 1744

Order Plans @

WWW.LDLINE.COM