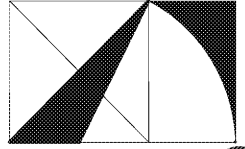


GENERAL NOTES:

1. FIRE ALARM DEVICES SHOWN IN LIGHT PENWEIGHT ARE EXISTING TO REMAIN. ELECTRICAL DEVICES SHOWN IN HEAVY PENWEIGHT ARE NEW UNLESS OTHERWISE NOTED.
2. CONNECT NEW FIRE ALARM DEVICES TO EXISTING BUILDING FIRE ALARM SYSTEM. NEW FIRE ALARM DEVICES SHALL BE MANUFACTURED BY SIMPLEX. FIELD VERIFY EXISTING SYSTEM LOCATION AND THAT IT IS ADEQUATE FOR NEW FIRE ALARM DEVICES.

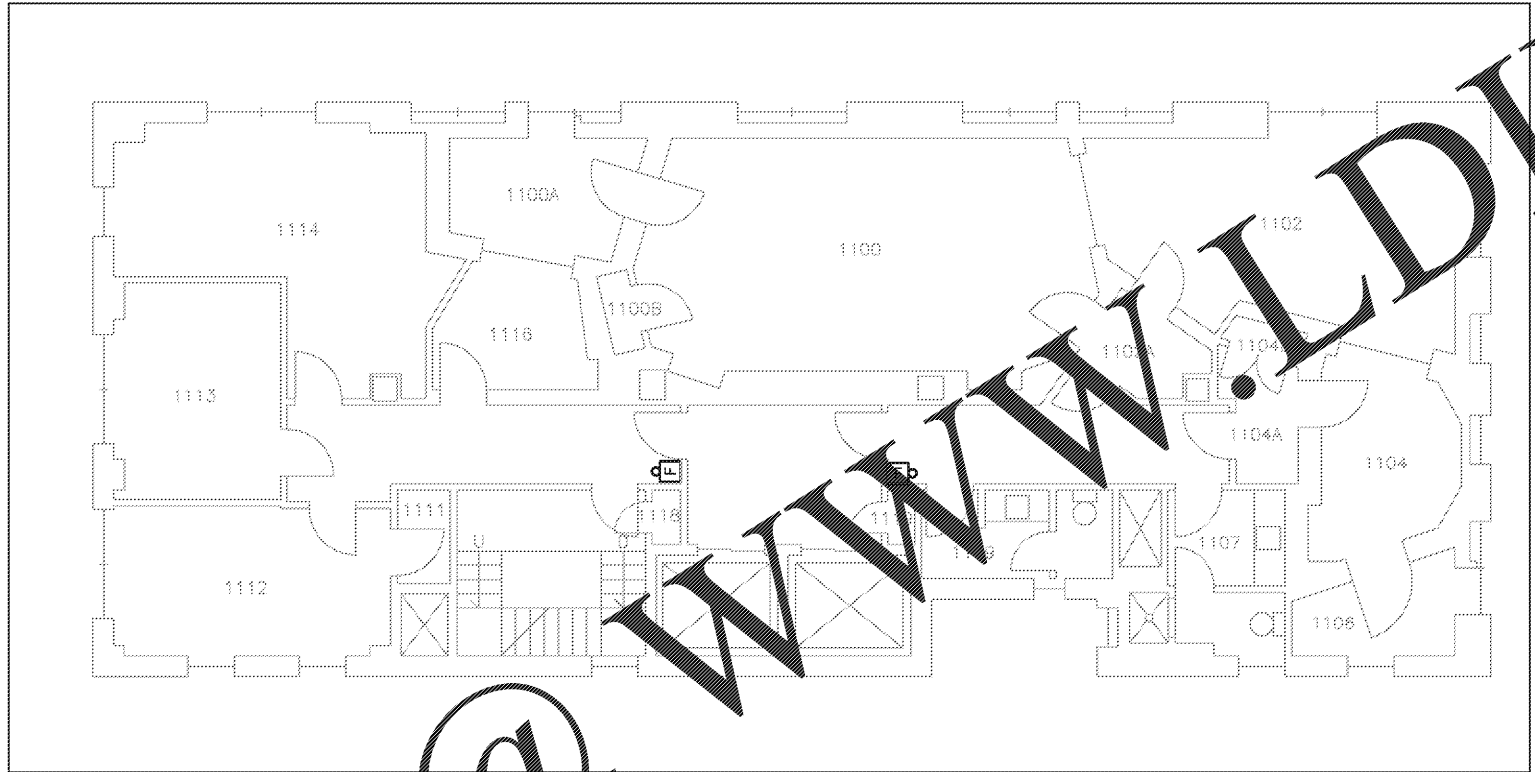
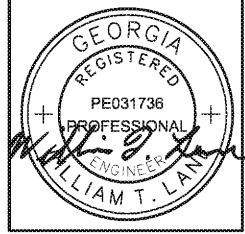


THE ARCHITECTURE GROUP, INC.

375 Peachtree St.
Atlanta, GA 30303
Phone: (678) 222-0375
Fax: (678) 222-0384
tag@architecturegroup.com

COPYRIGHT © 2018 BY THE ARCHITECTURE GROUP, INC. ALL RIGHTS RESERVED.

THIS DRAWING MAY NOT BE USED IN ANY MANNER NOR REPRODUCED IN ANY FORM WITHOUT PRIOR WRITTEN CONSENT FROM THE ARCHITECTURE GROUP INC.



ELECTRICAL SYSTEMS PLAN - 11TH FL
SCALE: 1/8"=1'-0"

**2018 MRRF CAMPUS-WIDE
ADA IMPROVEMENTS**
PROJECT No. IGSU-026-18
TAG PROJECT No. 1706
GEORGIA STATE UNIVERSITY
ATLANTA, GEORGIA

100% CD#	2/5/2017
REVISIONS	
DATE	2/5/2017
DRAWN BY	
CHECKED	
APPROVED	
SCALE	AS NOTED
PROJECT NUMBER	1706
DRAWING TITLE	

ELECTRICAL SYSTEMS - STANDARD BLDG

DRAWING NUMBER
SD E1.3

SPENCER BRISTOL ENGINEERING, INC.
A Gray Company
3577 Parkway Lane, Suite 250
Peachtree Corners, Georgia 30092
Tel. 770.414.1628 Fax 770.414.6024
SBE Project No. 1744

Order Plans @

WWW.LDLine.com