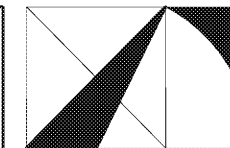


**GENERAL NOTES:**

1. FIRE ALARM DEVICES SHOWN IN LIGHT PENWEIGHT ARE EXISTING TO REMAIN. ELECTRICAL DEVICES SHOWN IN HEAVY PENWEIGHT ARE NEW UNLESS OTHERWISE NOTED.
2. CONNECT NEW FIRE ALARM DEVICES TO EXISTING BUILDING FIRE ALARM SYSTEM. NEW FIRE ALARM DEVICES SHALL BE MANUFACTURED BY SIMPLEX. FIELD VERIFY EXISTING SYSTEM LOCATION AND THAT IT IS ADEQUATE FOR NEW FIRE ALARM DEVICES.

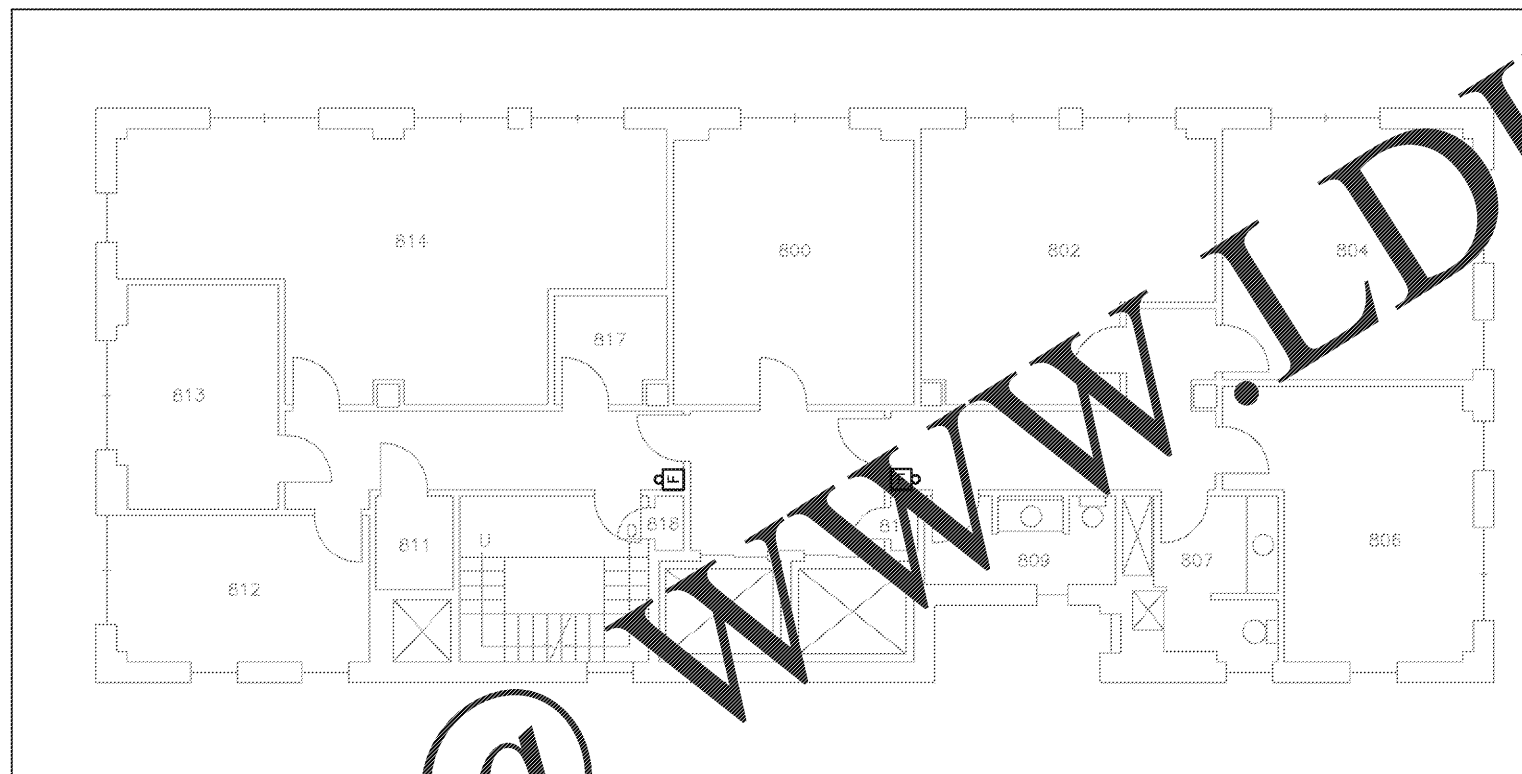
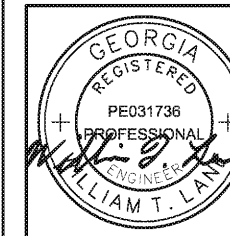


**THE ARCHITECTURE GROUP, INC.**

375 Peachtree St.  
Atlanta, GA 30303  
Phone: (678) 222-0375  
Fax: (678) 222-0384  
tag@architecturegroup.com

COPYRIGHT © 2018 BY THE ARCHITECTURE GROUP, INC. ALL RIGHTS RESERVED.

THIS DRAWING MAY NOT BE USED IN ANY MANNER NOR REPRODUCED IN ANY FORM WITHOUT PRIOR WRITTEN CONSENT FROM THE ARCHITECTURE GROUP INC.



**ELECTRICAL SYSTEMS PLAN - 8TH FL**  
SCALE: 1/8"=1'-0"

**2018 MRRF CAMPUS-WIDE  
ADA IMPROVEMENTS**  
PROJECT No. IGSU-026-18  
TAG PROJECT No. 1706  
GEORGIA STATE UNIVERSITY  
ATLANTA, GEORGIA

100% CD#	2/5/2017
REVISIONS	
DATE	2/5/2017
DRAWN BY	
CHECKED	
APPROVED	
SCALE	AS NOTED
PROJECT NUMBER	1706
DRAWING TITLE	

**ELECTRICAL SYSTEMS - STANDARD BLDG**

DRAWING NUMBER  
**SD E1.2**



**SPENCER BRISTOL ENGINEERING, INC.**  
A Gray Company  
3577 Parkway Lane, Suite 250  
Peachtree Corners, Georgia 30092  
Tel. 770.414.1628 Fax 770.414.6024  
SBE Project No. 1744

Order Plans @

WWW.LDLine.com