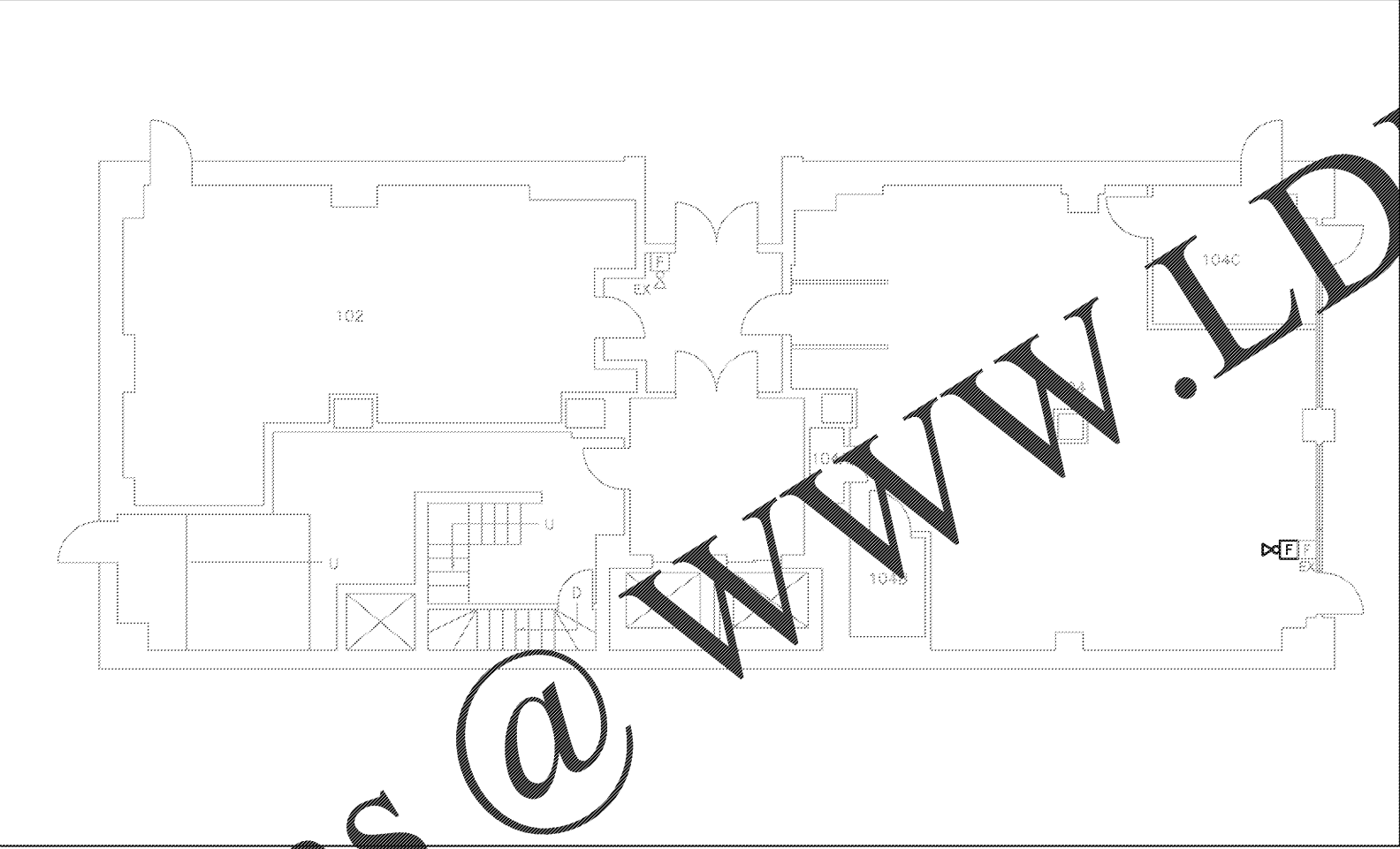
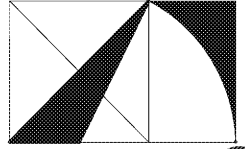


GENERAL NOTES:

1. FIRE ALARM DEVICES SHOWN IN LIGHT PENWEIGHT ARE EXISTING TO REMAIN. ELECTRICAL DEVICES SHOWN IN HEAVY PENWEIGHT ARE NEW UNLESS OTHERWISE NOTED.
2. CONNECT NEW FIRE ALARM DEVICES TO EXISTING BUILDING FIRE ALARM SYSTEM. NEW FIRE ALARM DEVICES SHALL BE MANUFACTURED BY SIMPLEX. FIELD VERIFY EXISTING SYSTEM LOCATION AND THAT IT IS ADEQUATE FOR NEW FIRE ALARM DEVICES.



ELECTRICAL SYSTEMS PLAN - 1ST FL
 SCALE: 1/8"=1'-0"

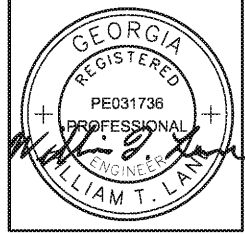


THE ARCHITECTURE GROUP, INC.

375 Peachtree St.
 Atlanta, GA 30303
 Phone: (678) 222-0375
 Fax: (678) 222-0384
 tag@architecturegroup.com

COPYRIGHT © 2018 BY THE ARCHITECTURE GROUP, INC. ALL RIGHTS RESERVED.

THIS DRAWING MAY NOT BE USED IN ANY MANNER NOR REPRODUCED IN ANY FORM WITHOUT PRIOR WRITTEN CONSENT FROM THE ARCHITECTURE GROUP INC.



**2018 MRRF CAMPUS-WIDE
 ADA IMPROVEMENTS**
 PROJECT No. IGSU-026-18
 TAG PROJECT No. 1706
 GEORGIA STATE UNIVERSITY
 ATLANTA, GEORGIA

100% CD#	2/5/2017
REVISIONS	
DATE	2/5/2017
DRAWN BY	
CHECKED	
APPROVED	
SCALE	AS NOTED
PROJECT NUMBER	1706
DRAWING TITLE	

ELECTRICAL SYSTEMS - STANDARD BLDG

DRAWING NUMBER
SD E1.1

SPENCER BRISTOL ENGINEERING, INC.
 A Gray Company
 3577 Parkway Lane, Suite 250
 Peachtree Corners, Georgia 30092
 Tel. 770.414.1628 Fax 770.414.6024
 SBE Project No. 1744

Order Plans @