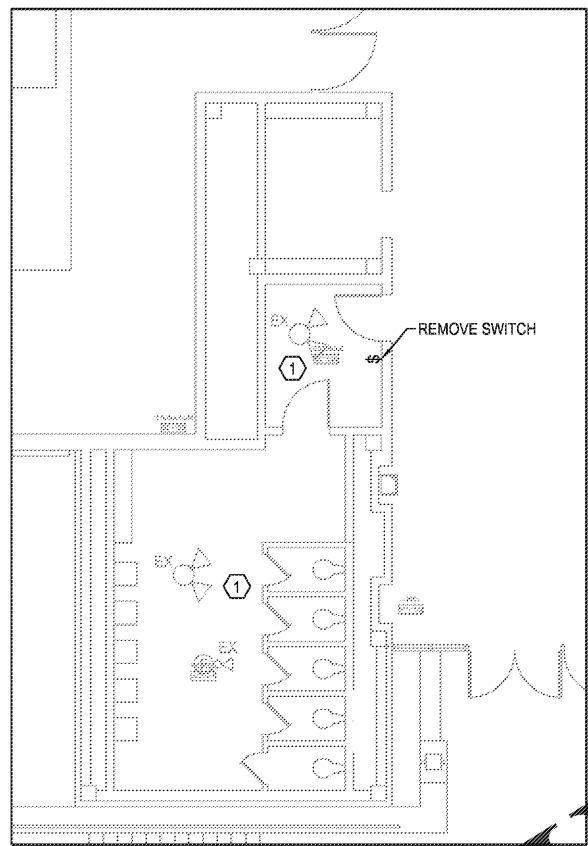
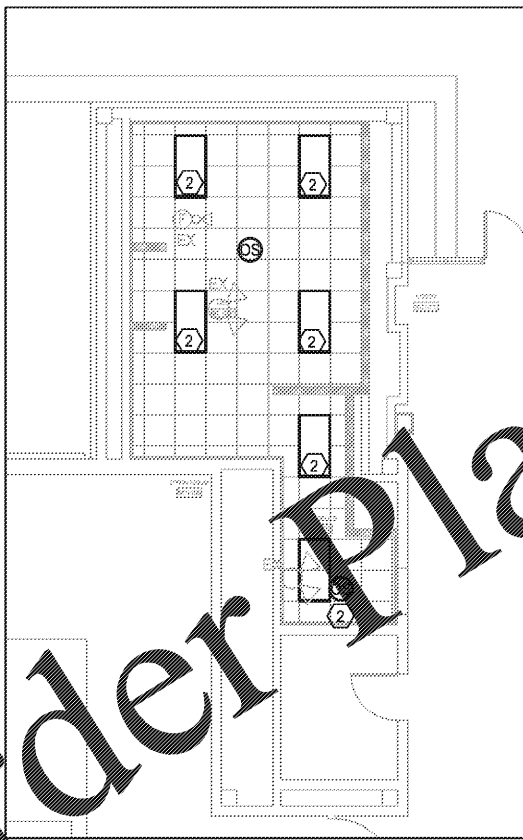


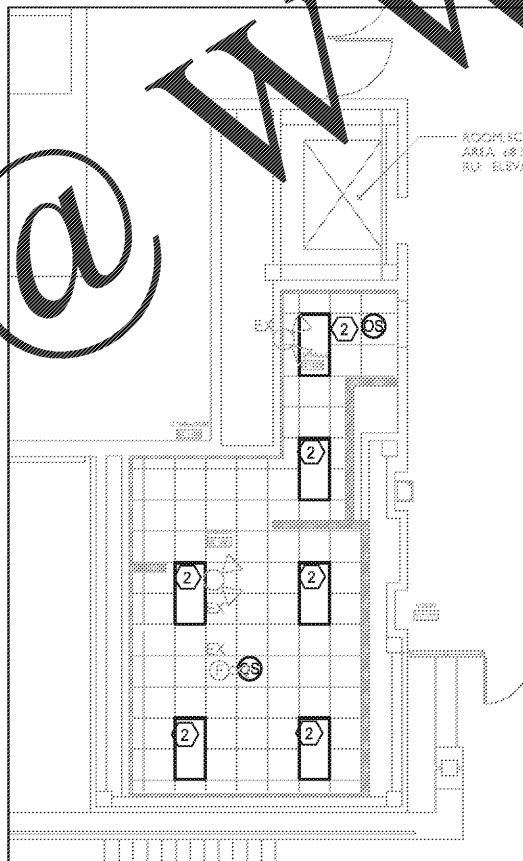
1 ELECTRICAL DEMO PLAN
SCALE: 1/8"=1'-0"



2 ELECTRICAL DEMO PLAN
SCALE: 1/8"=1'-0"



3 ELECTRICAL NEW PLAN
SCALE: 1/8"=1'-0"



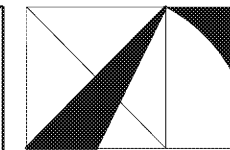
4 ELECTRICAL NEW PLAN
SCALE: 1/8"=1'-0"

KEY NOTES:

- ① REMOVE LIGHT FIXTURES AND CONTROLS SERVING SPACE. EXISTING LIGHTING CIRCUIT TO REMAIN AND BE RE-USED WITH NEW LIGHT FIXTURE. REFER TO 3/E1.1 & 4/E1.1 FOR NEW LIGHTING LAYOUT.
- ② NEW LIGHT FIXTURE, MANUFACTURED BY COOPER, CAT# 24EN-LD2-45-UNV-L840-CD1-U. CONTRACTOR TO UTILIZE EXISTING LIGHTING CIRCUIT SERVING SPACE.

GENERAL NOTES:

- ELECTRICAL DEVICES SHOWN IN LIGHT PENWEIGHT ARE EXISTING TO REMAIN. ELECTRICAL DEVICES SHOWN IN HEAVY PENWEIGHT ARE NEW UNLESS OTHERWISE NOTED.
- 2. EXISTING CIRCUITS SERVING MECHANICAL EQUIPMENT ARE TO REMAIN UNLESS OTHERWISE NOTED.
- 3. OCCUPANCY SENSORS SHALL PROVIDE 100% COVERAGE PER MANUFACTURERS RECOMMENDATIONS.
- 4. ALL CEILING MOUNTED DEVICES WHICH ARE TO REMAIN SHALL BE REMOVED, CLEANED AND REINSTALLED IN NEW CEILING.

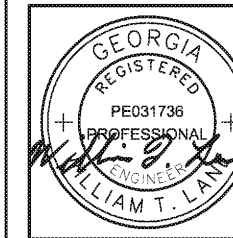


THE ARCHITECTURE GROUP, INC.

377 Peachtree St.
Atlanta, GA 30303
Phone: (678) 222-0375
Fax: (678) 222-0384
tag@architecturegroup.com

COPYRIGHT © 2018 BY THE ARCHITECTURE GROUP, INC. ALL RIGHTS RESERVED.

THIS DRAWING MAY NOT BE USED IN ANY MANNER NOR REPRODUCED IN ANY FORM WITHOUT PRIOR WRITTEN CONSENT FROM THE ARCHITECTURE GROUP INC.



2018 MRRF CAMPUS-WIDE
ADA IMPROVEMENTS
PROJECT No. IGSU-026-18
TAG PROJECT No. 1706
GEORGIA STATE UNIVERSITY
ATLANTA, GEORGIA

100% CD#	2/5/2017
REVISIONS	
DATE	2/5/2017
DRAWN BY	
CHECKED	
APPROVED	
SCALE	AS NOTED
PROJECT NUMBER	1706
DRAWING TITLE	

ELECTRICAL LIGHTING PLAN - SC BLDG DECATUR CAMPUS

DRAWING NUMBER

SC E1.1



SPENCER BRISTOL ENGINEERING, INC.
A Gray Company
3577 Parkway Lane, Suite 250
Peachtree Corners, Georgia 30092
Tel. 770.414.1628 Fax 770.414.6024
SBE Project No. 1744

Order Plans @

WWW.LDILine.com