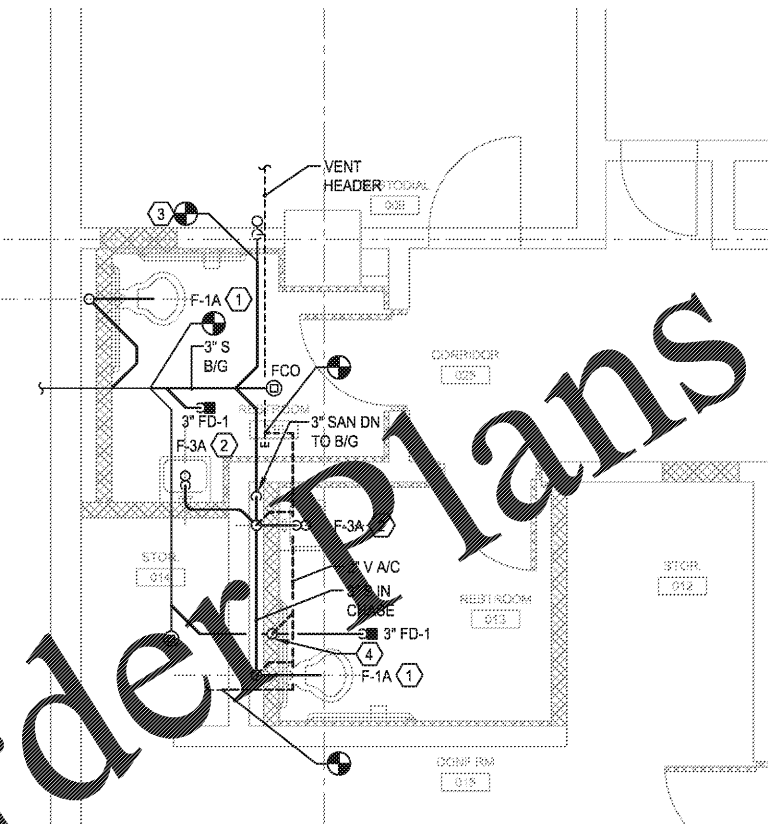
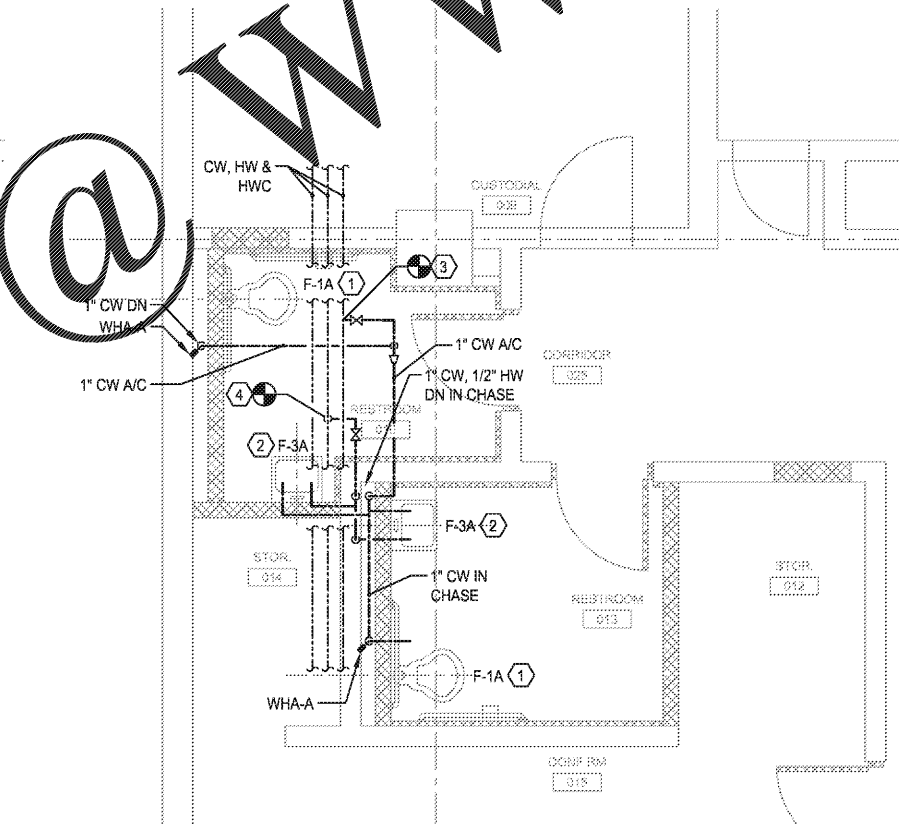


1 PLUMBING DEMO PLAN
SCALE: 1/4"=1'-0"



2 SANITARY NEW PLAN
SCALE: 1/4"=1'-0"



3 DOMESTIC NEW PLAN
SCALE: 1/4"=1'-0"

KEY NOTES (FOR 1/LN P1.1 ONLY):

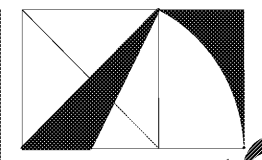
- ① FLOOR-MOUNTED WATER CLOSET, FLUSH VALVE, CW SUPPLY, AND ACCESSORIES SHALL BE DEMOLISHED. SANITARY BRANCH PIPING SERVING THE TOILET SHALL BE DEMOLISHED BACK TO ACTIVE MAIN AND CAPPED. FLOOR PENETRATION SHALL BE IN-FILLED WITH CONCRETE.
- ② WALL HUNG LAVATORY, FAUCET, WATER SUPPLIES, P-TRAP, AND ALL ACCESSORIES SHALL BE DEMOLISHED. SANITARY CONNECTION SHALL BE CAPPED. VENT PIPING SHALL BE DEMOLISHED BACK TO THE VENT HEADER ABOVE THE CEILING. DOMESTIC WATER BRANCH PIPING SHALL BE DEMOLISHED BACK TO THE DOMESTIC WATER MAINS AND CAPPED.
- ③ EXISTING JANITORS SINK SHALL REMAIN. THE DOMESTIC WATER BRANCH PIPING, SANITARY PIPING, AND VENT PIPING SERVING THE JANITORS SINK, SHALL REMAIN. DISCONNECT AND RE-CONNECT PIPING AS REQUIRED DURING THE RENOVATION.
- ④ SANITARY BRANCH PIPING BELOW FLOOR SHALL BE DEMOLISHED BACK TO THE LOCATION SHOWN.

KEY NOTES (FOR 2/LN P1.1 ONLY):

- ① 3" SAN, 2" VENT FOR WATER CLOSET. ROUTE SANITARY HORIZONTALLY IN PLUMBING CHASE AS SHOWN.
- ② 3" SAN, 2" VENT FOR WATER CLOSET. 3" SANITARY DOWN TO BELOW GRADE AND ROUTE AS SHOWN.
- ③ 2" SAN FOR EACH LAVATORY, 1-1/2" VENT FOR TWO (2) LAVATORIES. CONNECT SANITARY TO HORIZONTAL SANITARY PIPING IN PLUMBING CHASE.
- ④ 3" SAN, 2" VENT FOR FLOOR DRAIN.

KEY NOTES (FOR 3/LN P1.1 ONLY):

- ① 1" CW TO WATER CLOSET.
- ② 1/2" CW, 1/2" HW TO LAVATORY.
- ③ CONNECT NEW 1-1/2" CW TO EXISTING CW PIPING ABOVE THE CEILING.
- ④ CONNECT NEW 1/2" HW TO EXISTING HW PIPING ABOVE THE CEILING.

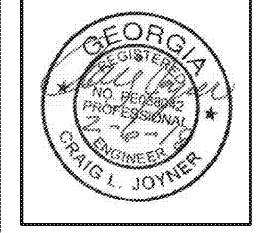


THE ARCHITECTURE GROUP INC.

380 Venables St.
Atlanta, GA 30302
Phone: (678) 222-0375
Fax: (678) 222-0384
tag@thearchitecturegroup.com

© COPYRIGHT © 2015 BY THE ARCHITECTURE GROUP, INC. ALL RIGHTS RESERVED.

THIS DRAWING MAY NOT BE USED IN ANY MANNER NOR REPRODUCED IN ANY FORM WITHOUT PRIOR WRITTEN CONSENT FROM THE ARCHITECTURE GROUP INC.



2018 MRRF CAMPUS-WIDE ADA IMPROVEMENTS
PROJECT No. IGSU-026-18
TAG PROJECT No. 1706
GEORGIA STATE UNIVERSITY
ATLANTA, GEORGIA

100% CDs	2/5/2017
REVISIONS	
DATE	2/5/2017
DRAWN BY	
CHECKED	
APPROVED	
SCALE	AS NOTED
PROJECT NUMBER	1706
DRAWING TITLE	

PLUMBING PLAN - NORTH LIBRARY

DRAWING NUMBER

LN P1.1

Spencer Bristol Engineering, Inc.
A Gray Company
3577 Parkway Lane, Suite 250
Peachtree Corners, Georgia 30092
Tel. 770.414.1628 Fax 770.414.6024
SBE Project No. 1744

Order Plans

@

www.LDILine.com