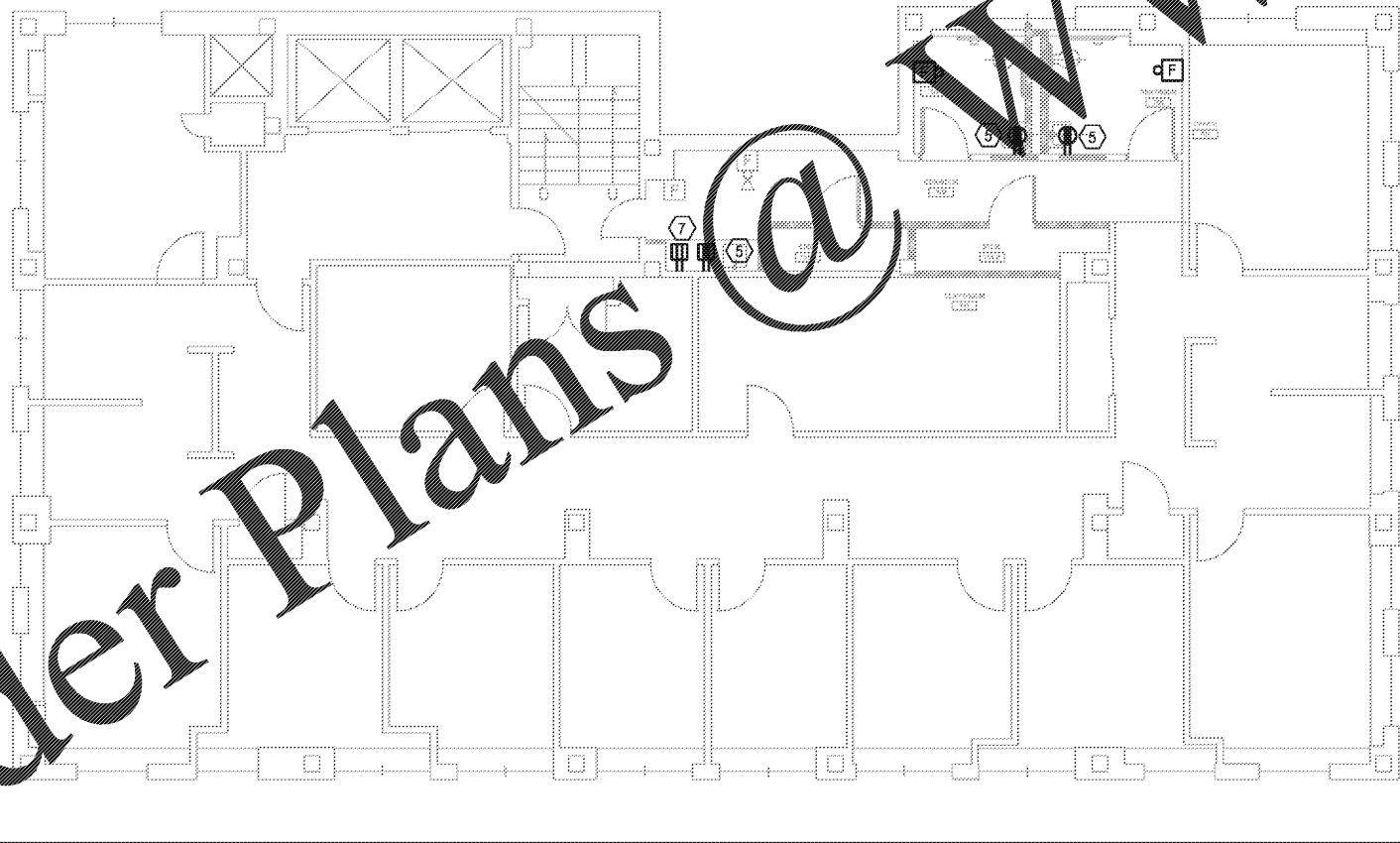


1 **ELECTRICAL DEMO PLAN - 7TH FL**  
SCALE: 1/8"=1'-0"



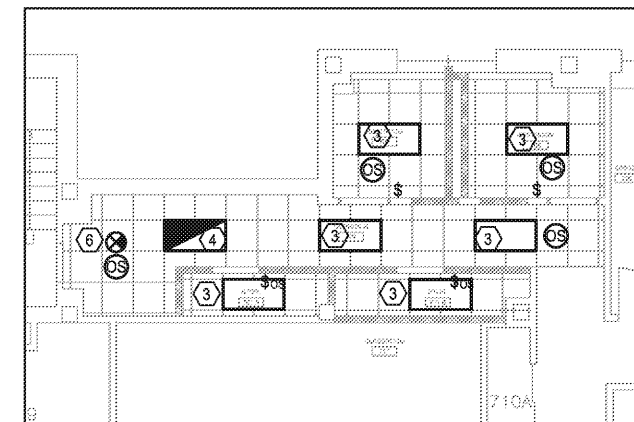
2 **ELECTRICAL NEW PLAN - 7TH FL**  
SCALE: 1/8"=1'-0"

**KEY NOTES:**

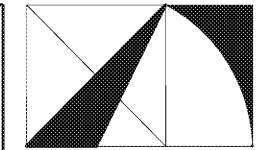
- 1 REMOVE LIGHT FIXTURES AND CONTROLS SERVING SPACE. EXISTING LIGHTING CIRCUIT TO REMAIN AND BE RE-USED WITH NEW LIGHT FIXTURE. REFER TO 3/E1.6 FOR NEW LIGHTING LAYOUT.
- 2 REMOVE EXISTING ELECTRICAL DEVICE. EXISTING CIRCUIT TO REMAIN AND BE RE-USED WITH NEW ELECTRICAL DEVICE. REFER TO 2/E1.6 FOR NEW RECEPTACLE LOCATION.
- 3 NEW LIGHT FIXTURE, MANUFACTURED BY COOPER, CAT# 24EN-LD2-45-UNV-L840-CD1-U. CONTRACTOR TO UTILIZE EXISTING LIGHTING CIRCUIT SERVING SPACE.
- 4 NEW EMERGENCY LIGHT FIXTURE, MANUFACTURED BY COOPER, CAT# 24EN-LD2-45-UNV-L840-CD1-U-EL. CONTRACTOR TO UTILIZE EXISTING LIGHTING CIRCUIT SERVING SPACE. PROVIDE BATTERY BACKUP TO MATCH SUPPLY VOLTAGE.
- 5 NEW 120VAC, 20A, 1-PHASE DUPLEX RECEPTACLE. CONTRACTOR TO UTILIZE EXISTING CIRCUIT SERVING SPACE.
- 6 NEW EXIT LIGHT, MANUFACTURED BY LUMINARIA, CAT#LRP-W-1-PANELN. CONTRACTOR TO UTILIZE EXISTING LIGHTING CIRCUIT SERVING SPACE. PROVIDE BATTERY BACKUP.
- 7 REFRIGERATOR. CONNECT TO EXISTING SPARE CIRCUIT OR NEW 20A/1P CIRCUIT BREAKER IN EXISTING SPACE IN NEARBY PANEL. CONFIRM AVAILABILITY OF CIRCUITS AND NOTE ANY DISCREPANCIES ON THE AS-BUILT SET.

**GENERAL NOTES:**

- 1 ELECTRICAL DEVICES SHOWN IN LIGHT PENWEIGHT ARE EXISTING TO REMAIN. ELECTRICAL DEVICES SHOWN IN HEAVY PENWEIGHT ARE DEMO OR NEW UNLESS OTHERWISE NOTED.
- 2 EXISTING CIRCUITS SERVING MECHANICAL EQUIPMENT ARE TO REMAIN UNLESS OTHERWISE NOTED.
- 3 EMERGENCY/EXIT/EGRESS LIGHTING FIXTURES ARE SPECIFIED WITH BATTERY BACKUP. CONNECT TRICKLE CHARGE INPUTS TO UNSWITCHED CIRCUIT CONDUCTORS OF LIGHTING CIRCUITS SERVING THE NORMAL LIGHTING IN THE SAME ROOM.
- 4 OCCUPANCY SENSORS SHALL PROVIDE 100% COVERAGE PER MANUFACTURERS RECOMMENDATIONS.
- 5 CONNECT NEW FIRE ALARM DEVICES TO EXISTING BUILDING FIRE ALARM SYSTEM. NEW FIRE ALARM DEVICES SHALL BE MANUFACTURED BY SIMPLEX. FIELD VERIFY EXISTING SYSTEM LOCATION AND THAT IT IS ADEQUATE FOR NEW FIRE ALARM DEVICES.



3 **ELECTRICAL RCP PLAN - 7TH FL**  
SCALE: 1/8"=1'-0"

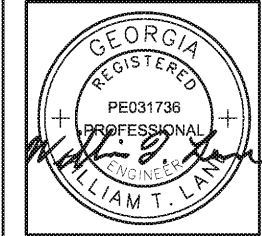


**THE ARCHITECTURE GROUP, INC.**

375 Peachtree St. N.E.  
Atlanta, GA 30308  
Phone: (678) 222-0375  
Fax: (678) 222-0384  
tag@architecturegroup.com

© COPYRIGHT © 2018 BY THE ARCHITECTURE GROUP, INC. ALL RIGHTS RESERVED.

THIS DRAWING MAY NOT BE USED IN ANY MANNER NOR REPRODUCED IN ANY FORM WITHOUT PRIOR WRITTEN CONSENT FROM THE ARCHITECTURE GROUP INC.



2018 MRRF CAMPUS-WIDE  
ADA IMPROVEMENTS  
PROJECT No. IGSU-026-18  
TAG PROJECT No. 1706  
GEORGIA STATE UNIVERSITY  
ATLANTA, GEORGIA

100% CD#	2/5/2017
REVISIONS	
DATE	2/5/2017
DRAWN BY	
CHECKED	
APPROVED	
SCALE	AS NOTED
PROJECT NUMBER	1706
DRAWING TITLE	

**ELECTRICAL SYSTEMS - HAAS HOWELL BLDG**

DRAWING NUMBER

**HH E1.2**



**SPENCER BRISTOL ENGINEERING, INC.**  
A Gray Company  
3577 Parkway Lane, Suite 250  
Peachtree Corners, Georgia 30092  
Tel. 770.414.1628 Fax 770.414.6024  
SBE Project No. 1744

Order Plans @ WWW.LDLINE.com