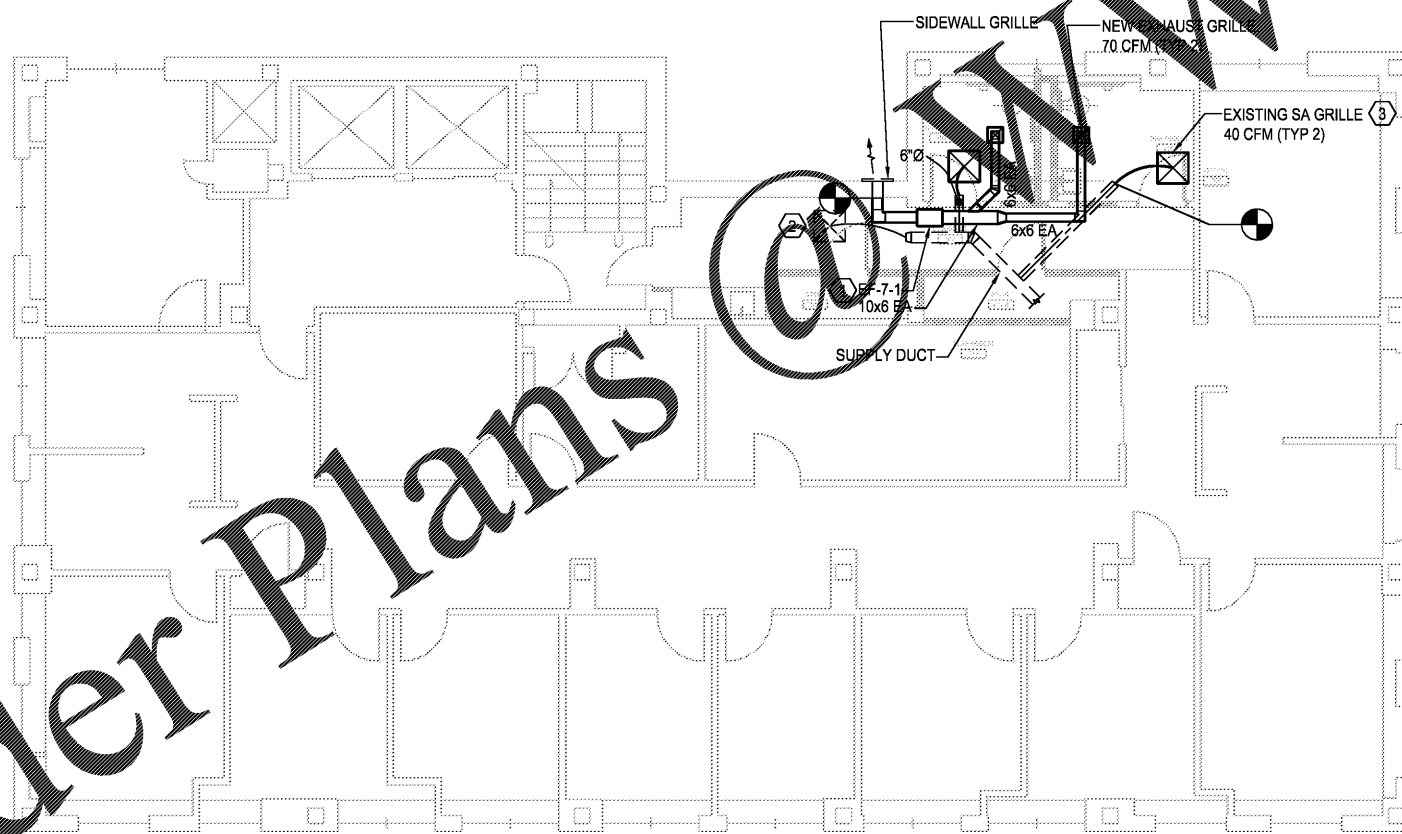


1 MECHANICAL DEMO PLAN - 7TH FL  
SCALE: 1/8"=1'-0"



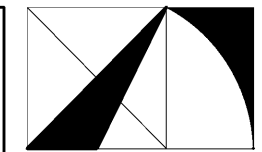
2 MECHANICAL NEW PLAN - 7TH FL  
SCALE: 1/8"=1'-0"

KEY NOTES (FOR 1/HH M1.2 ONLY):

- ① EXHAUST GRILLE AND CEILING MOUNTED EXHAUST FAN SHALL BE DEMOLISHED. CAP EXHAUST DUCT AT EXTERIOR WALL FOR FUTURE CONNECTION. FAN ELECTRICAL SERVICE SHALL NO BE DEMOLISHED.
- ② SUPPLY AIR DIFFUSER SHALL REMAIN.
- ③ SUPPLY AIR DIFFUSER SHALL BE RELOCATED.

KEY NOTES (FOR 2/HH M1.2 ONLY):

- ① INSTALL NEW INLINE EXHAUST FAN, EF-7-1, ABOVE CEILING. FAN SHALL RUN CONTINUOUSLY. EXTEND CONDUCTORS FROM EXISTING FAN LOCATION TO NEW FAN LOCATION.
- ② BALANCE EXISTING DIFFUSER TO 50 CFM.
- ③ RE-INSTALL EXISTING SUPPLY AIR GRILLE. BALANCE TO AIRFLOW SHOWN.

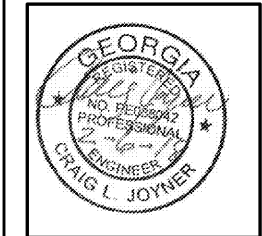


THE ARCHITECTURE GROUP, INC.

377 Peachtree St. N.E.  
Atlanta, GA 30303  
Phone: (678) 222-0375  
Fax: (678) 222-0384  
tag@architecturegroup.com

COPYRIGHT © 2018 BY THE ARCHITECTURE GROUP, INC. ALL RIGHTS RESERVED.

THIS DRAWING MAY NOT BE USED IN ANY MANNER NOR REPRODUCED IN ANY FORM WITHOUT PRIOR WRITTEN CONSENT FROM THE ARCHITECTURE GROUP INC.



2018 MRRF CAMPUS-WIDE  
ADA IMPROVEMENTS  
PROJECT No. IGSU-026-18  
TAG PROJECT No. 1706  
GEORGIA STATE UNIVERSITY  
ATLANTA, GEORGIA

100% CDs	2/5/2017
REVISIONS	
DATE	2/5/2017
DRAWN BY	
CHECKED	
APPROVED	
SCALE	AS NOTED
PROJECT NUMBER	1706
DRAWING TITLE	

MECHANICAL  
PLAN - HAAS  
HOWELL BLDG  
- 7TH FLOOR

DRAWING NUMBER

HH M1.2



SPENCER BRISTOL ENGINEERING, INC.  
A Gray Company  
3577 PARKWAY LANE, SUITE 250  
PEACHTREE CORNERS, GEORGIA 30092  
TEL. 770.414.1628 FAX 770.414.6024  
SBE Project No. 1744

Order Plans

WWW.LDILine.com