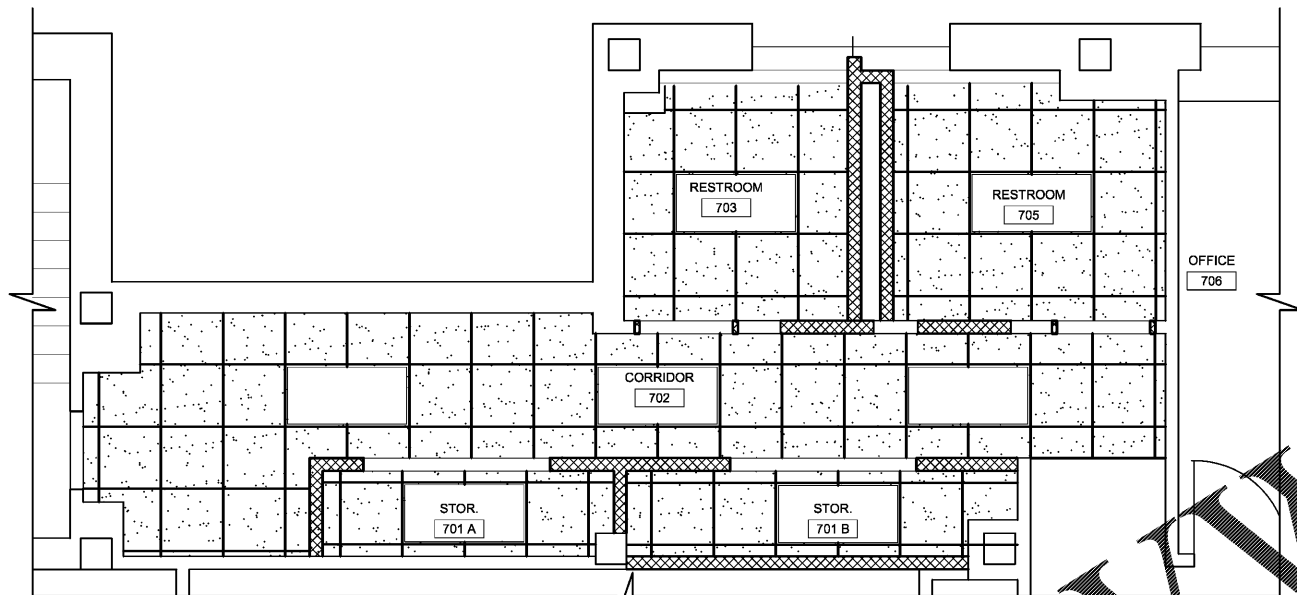
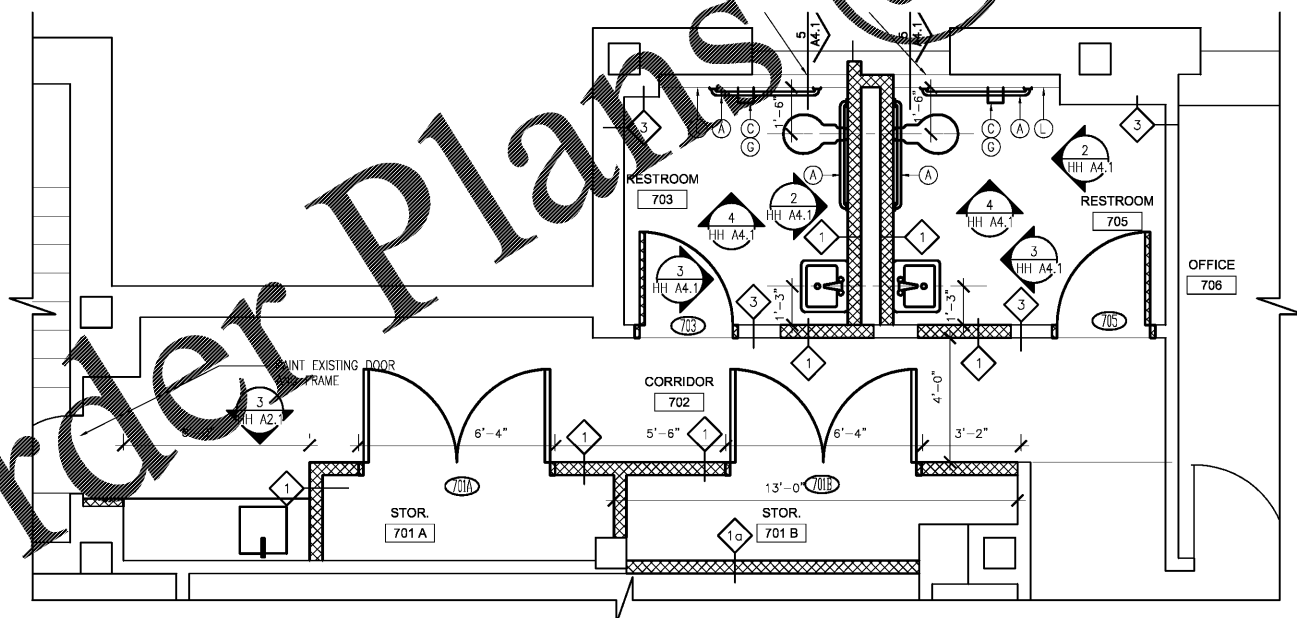


⊕ K KEY PLAN
HH A2.2 SCALE: 1/64" = 1'-0"



⊕ 2 HAAS-HOWELL 7th FLOOR RESTROOM RCP
HH A2.2 SCALE: 1/4" = 1'-0"



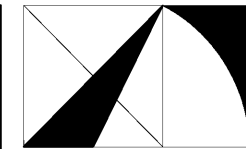
⊕ 3 HAAS-HOWELL 7th FLOOR RESTROOM CONSTRUCTION PLAN
HH A2.6 SCALE: 1/4" = 1'-0"

WALL TYPES

- 1 5 INCH (NOMINAL) GYPSUM WALL BOARD PARTITION
ONE LAYER 5/8 INCH THICK INTERIOR FIBER REINFORCED GYPSUM PANELS ON EACH SIDE OF 3-5/8 INCH METAL STUDS (20 GAUGE, MINIMUM) SPACED 16 INCHES ON CENTER w/ 3/4" SOUND BATT. TERMINATE PARTITION AT STRUCTURAL DECK ABOVE. WHERE TILE IS CALLED FOR, SUBSTITUTE 1 LAYER OF 3/4" CEMENT BACKER BOARD FOR GYPSUM BD. CONTINUE CERAMIC TILE 6" ABOVE CEILING.
- 1A 5 INCH (NOMINAL) GYPSUM WALL BOARD PARTITION - 1 HOUR RATED - U.L. U465
ONE LAYER 5/8 INCH THICK TYPE X INTERIOR FIBER REINFORCED GYPSUM PANELS ON EACH SIDE OF 3-5/8 INCH METAL STUDS (20 GAUGE, MINIMUM) SPACED 16 INCHES ON CENTER w/ 3/2" SOUND BATT. TERMINATE PARTITION AT BOTTOM OF FLOOR DECK ABOVE.
- 2 8 INCH C.M.U. PARTITION, FULL HEIGHT FROM FLOOR SLAB TO CEILING. FULL HEIGHT FROM FLOOR SLAB TO UNDERSIDE OF FLOOR SLAB/ROOF DECK ABOVE. REFER TO U.L. DESIGN FOR ALL OPENINGS WITH APPROVED SIKING OR FIRE-RATED CAULK.
- 2A 8 INCH C.M.U. PARTITION (NOMINAL 8 M.U., FULL HEIGHT FROM FLOOR SLAB TO UNDERSIDE OF FLOOR SLAB/ROOF DECK ABOVE.
- 3 FURRING FOR PORCELAIN TILE
7/8" FURRING CHANNELS HORIZONTALLY @ 16" O.C. ON SUBSTRATE w/ 3/4" CEMENT BACKER BOARD FOR NEW PORCELAIN TILE. TILE TO CONTINUE 6" ABOVE CEILING. SAW CUT EXISTING COVE BASE TO ACCOMMODATE NEW FURRING.

LEGEND

- NEW CEILING GRID SYSTEM AND ACOUSTICAL TILES
NOTE: REUSE EXISTING WHERE POSSIBLE
- NEW OR RELOCATED 2'x4' & 2'x2' LIGHTS FOR LAY IN CEILING SYSTEM
- DIFFUSER
- RETURN AIR DISTRIBUTION DEVICE

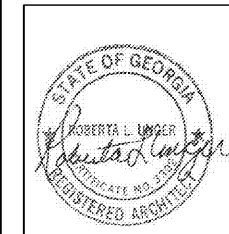


THE ARCHITECTURE GROUP, INC.

381 Virginia St.
Atlanta, GA 30313
Phone: (678) 222-0375
Fax: (678) 222-0384
tag@thearchitecturegroup.com

COPYRIGHT © 2018 BY THE ARCHITECTURE GROUP, INC. ALL RIGHTS RESERVED.

THIS DRAWING MAY NOT BE USED IN ANY MANNER NOR REPRODUCED IN ANY FORM WITHOUT PRIOR WRITTEN CONSENT FROM THE ARCHITECTURE GROUP, INC.



2018 MRRF CAMPUS-WIDE ADA IMPROVEMENTS

PROJECT No. 1GSU-026-18

TAG PROJECT No. 1706

GEORGIA STATE UNIVERSITY
ATLANTA, GEORGIA

REVISIONS	DATE

DATE	2/5/2017
DRAWN BY	MW
CHECKED	MC
APPROVED	BU
SCALE	AS NOTED
PROJECT NUMBER	1706

DRAWING TITLE
**HAAS-HOWELL
DEDUCTIVE
ALTERNATE #1
7th FLOOR
RESTROOM CONST.
PLAN & RCP**
DRAWING NUMBER

HH A2.2