

FIRE ALARM MATRIX

Matrix table with columns for various fire alarm components (Fire Sprinkler Systems, Manual Pull Stations, Smoke Detection Devices, etc.) and rows for different alarm conditions (Acquiesced Alarm Condition, Alarmed Alarm Condition, etc.).

FIRE ALARM CONTROL PANEL INPUT POINTS table with columns for Panel Zones and Point locations (Point 1 to Point 8).

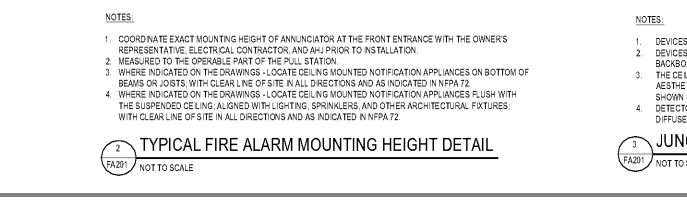
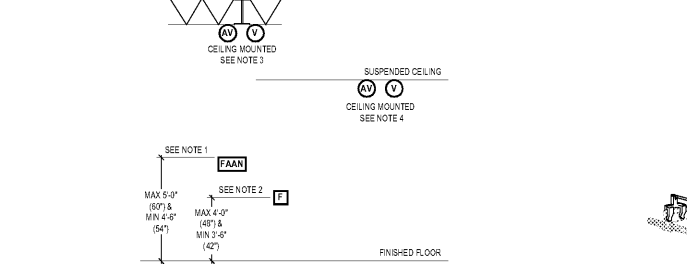
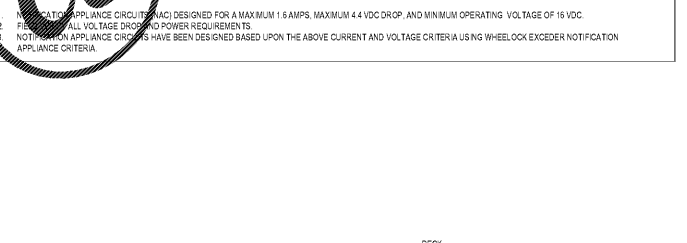
FIRE ALARM - MUX BUS 'A' table with columns for Point Address and specific device locations (e.g., TRU Waterflow Switch, Alarm Initiators).

FIRE ALARM CONTROL PANEL BATTERY CALCULATIONS (BOSCH FPD-7024) table showing calculations for Standby Power and N-Alarm current.

BABIES R US SPACE FIRE ALARM APS BATTERY CALCULATIONS (WHEELLOCK APS (PS-8)) table showing calculations for Standby Power and N-Alarm current.

FIRE ALARM NOTIFICATION APPLIANCE VOLTAGE DROP CALCULATIONS table showing calculations for signal circuit voltage drop.

WHEELLOCK TABLE FOR CANDELA OUTPUT table showing calculations for different angles and distances.



INSTALLATION NOTES 1-20: General contractor responsibility, work standards, equipment, cable, and mounting requirements.

GENERAL NOTES 1-20: System operation, power requirements, labeling, and coordination with other trades.

APPLICABLE CODES 2017 Florida Fire Prevention Code, Mechanical Code, and Electrical Code.

CONFLICTS BETWEEN THE REFERENCE NFPA STANDARDS, FEDERAL OR STATE CODES, SHALL BE BROUGHT TO THE IMMEDIATE ATTENTION OF FIRE PROTECTION ENGINEER (CPI) FOR RESOLUTION.

CONTRACTOR SHALL PROVIDE TRAINING OF AVAILABLE TRU-BRU STORE MANAGEMENT STAFF ON SYSTEM OPERATION.

REVISIONS

Revisions table with columns for Date, Description, and a large 'PROVIDE' watermark.

NO SUBSTITUTIONS SHALL BE ALLOWED UNLESS OTHERWISE NOTED (REFER TO SPECIFICATIONS)

CODE CONSULTANTS, INC. 2046 WOODLAND PKWY. SUITE 200 ST. LOUIS, MISSOURI 63146-4235 314-991-2833 www.cciconsultants.com

CASCO 10877 WATSON ROAD ST. LOUIS, MO 63127 PROJECT MANAGERS

FIRE PROTECTION ENGINEER OF RECORD: JACOB P. HERZOG, PE. License No. 08105. Professional Engineer Seal.

BABIES R US logo and address information.

GLOBAL RESOURCE CENTER ONE GEOFFREY WAY WAYNE, NJ 07470 (973) 687-3500

THIS DRAWING IS THE EXCLUSIVE PROPERTY OF TOYS 'R US. THE INFORMATION SHOWN MAY NOT BE USED FOR THE DRAWINGS REPRODUCED WITHOUT PERMISSION OF TOYS 'R US.

Location LAKELAND, FLORIDA 3770 US HIGHWAY 98 NORTH 33809

Drawing Title FIRE ALARM MATRIX, NOTES AND CALC

Scale AS NOTED Date 1/22/18

Sheet No. FA201