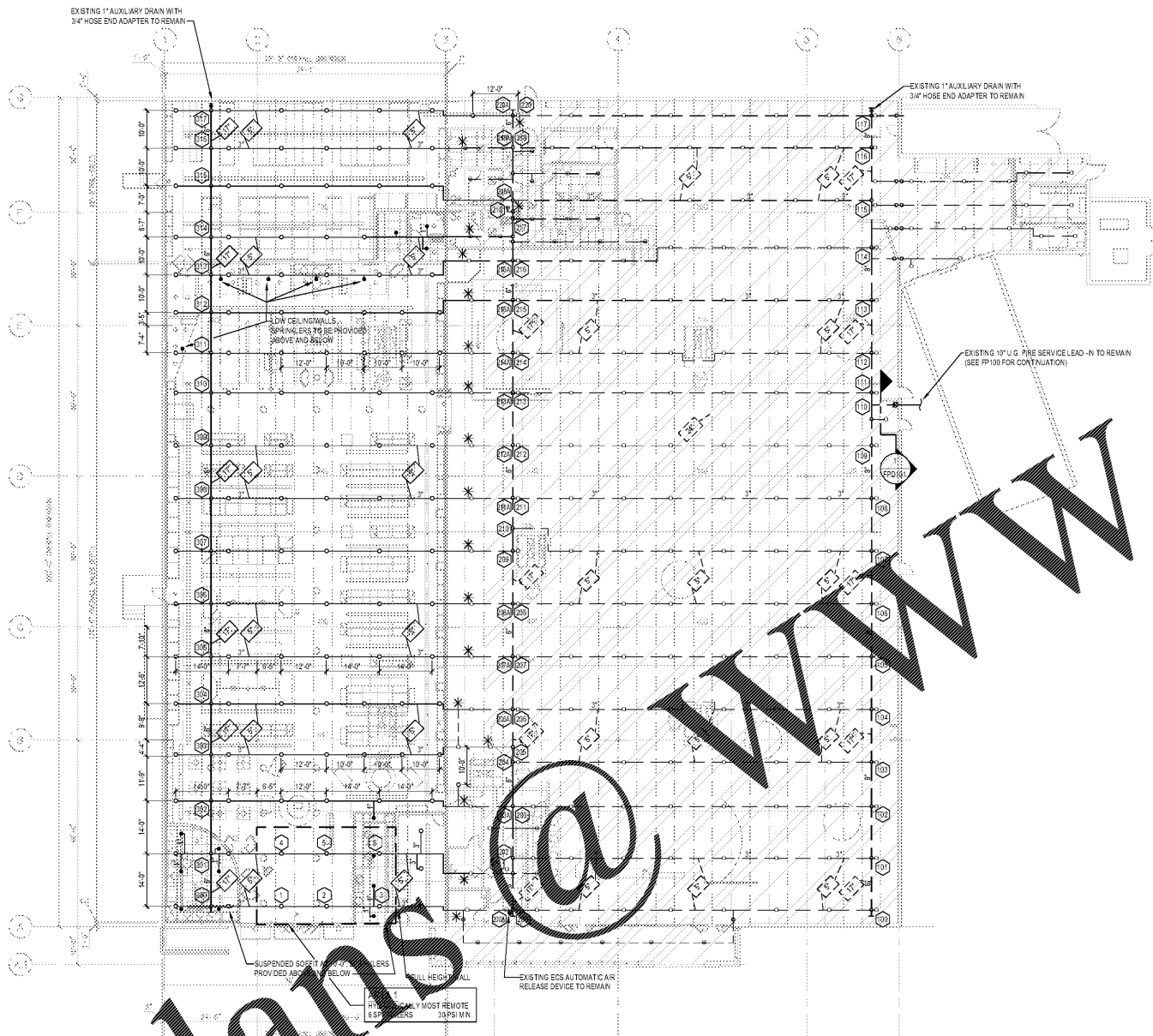


Order Plans @ WWW.IDLINE.COM



FIRE SPRINKLER NEW PLAN
SCALE: 1/16" = 1'-0"
FIN. FLOOR ELEV. = 100'-0"

DESIGN CRITERIA

SALES AND PRE SALES AREAS:
 DENSITY - 30 PSI PER SPRINKLER
 OPERATING AREA - 6 SPRINKLERS
 TEMPERATURE CLASSIFICATION/NOMINAL K-FACTOR/RESPONSE TYPE - INT/ 25.2SR
 HOSE STREAM ALLOWANCE - 250 GPM

OFFICE, BREAKROOM AND VESTIBULE AREAS:
 DENSITY - 0.15 GPM/50 FT
 OPERATING AREA - 1,500 SQ FT
 TEMPERATURE CLASSIFICATION/NOMINAL K-FACTOR/RESPONSE TYPE - ORD/ 5.0QR
 HOSE STREAM ALLOWANCE - 250 GPM

SPRINKLER SPACING SHALL BE AS SHOWN ON DRAWINGS

- FINISHED CEILING AREAS - LOCATE SPRINKLERS IN ACCORDANCE WITH THE DRAWINGS. NOT MORE THAN A 3-INCH RADIUS TOLERANCE ABOUT THE POINT IDENTIFIED BY DIMENSION WILL BE ACCEPTED. THE DESIGN DOES NOT ANTICIPATE THE USE OF "RETURN BENDS" TO LOCATE SPRINKLERS WITHIN THE TOLERANCE DESCRIBED ABOVE. WHERE ROWS OF SPRINKLERS ARE PROVIDED WITHIN THE SAME CEILING PLANE, ANY PART OF THE TOLERANCE USED FOR ONE SPRINKLER SHALL BE THE SAME FOR ALL OTHERS IN THAT SAME ROW.
- UNFINISHED AREAS - LOCATE SPRINKLERS PER THE DRAWINGS.

FIRE PROTECTION WATER SUPPLY HAS BEEN OBTAINED FROM A HYDRAULIC MODEL PERFORMED BY HILLSBOROUGH COUNTY THE PUBLIC UTILITIES DEPARTMENT. THE WATER SUPPLY SHALL BE CONSIDERED EFFECTIVE AT THE EXISTING POINT OF CONNECTION TO EXISTING THE PUBLIC WATER SUPPLY. THE APPROXIMATE WATER SUPPLY ELEVATION IS EVEN WITH THE FINISH FLOOR. NO SUBSTITUTIONS OF WATER SUPPLY DATA OR ITS EFFECTIVE POINT WILL BE ALLOWED.

ACTUAL STATIC: 65 PSI
 ACTUAL RESIDUAL: 45 PSI
 ACTUAL FLOW: 2,000 GPM

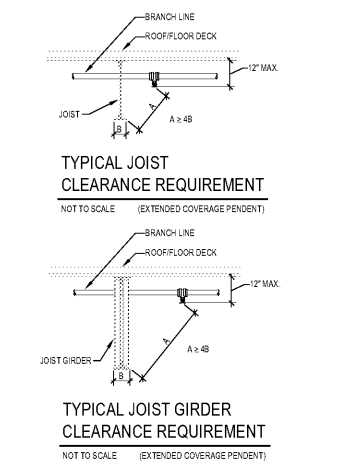
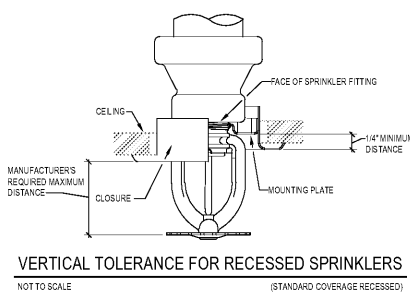
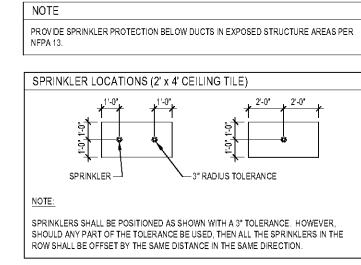
EXISTING FIRE DEPARTMENT CONNECTION TO REMAIN

SYMBOL KEY

---	EXISTING PIPING	
---	NEW PIPING	
---	EXISTING PIPING TO BE REMOVED	
✕	EXISTING SPRINKLER TO BE REMOVED	
●	NEW CHROME RECESSED	ORD/5.0QR
○	NEW EC BRASS PENDENT	INT/25.2SR
⊕	EXISTING CHROME RECESSED	ORD/5.0QR
⊙	EXISTING BRASS PENDENT	INT/25.2SR
○	CENTER LINE OF SPRINKLER; ALIGN WITH LIGHTS AND/OR OTHER SPRINKLERS; COORDINATE WITH DIMENSIONS.	
○	RECOMMENDED CENTER LINE ELEVATION OF PIPE BELOW METAL DECK	
○	APPROXIMATE CENTER LINE ELEVATION OF EXISTING PIPE BELOW METAL DECK	
○	RISE TO RIGHT AND FALL TO LEFT	
○	EXISTING PIPE	
○	HYDRAULIC REFERENCE POINT	
○	NOT IN SCOPE	
○	NEW CONNECTION TO EXISTING PIPE	

- GENERAL NOTES**
- PROVIDE ALL NECESSARY OFFSETS, RAISES OR LOWER PIPING AND DRAINS REQUIRE BUILDING CONDITIONS WHEN NOT SHOWN ON THE DRAWINGS.
 - EXAMINE THE JOB CONDITIONS AND VERIFY ALL MEASUREMENTS, DISTANCES, ELEVATIONS, CLEARANCES, SIZES, ETC.
 - CIVIL, ARCHITECTURAL, STRUCTURAL, MECHANICAL, AND ELECTRICAL BACKGROUND INFORMATION IS FOR COORDINATION PURPOSES ONLY. REFER TO THE PROJECT DRAWINGS FOR EXACT LOCATIONS, SIZES AND QUANTITIES OF OTHER TRADES WORK.
 - THE ENGINEERING DRAWINGS HAVE BEEN PREPARED USING AUTOCAD. THE DRAWINGS AND/OR CAD, THE HYDRAULIC CALCULATIONS HAVE BEEN PREPARED USING HAZ. THESE DOCUMENTS WILL BE MADE AVAILABLE TO THE FULL FIRE SPRINKLER CONTRACTOR IN EITHER ELECTRONIC FORM OR HARD COPY.
 - SUPPLY ONLY ONE (1) SPRINKLER FROM A SINGLE BRANCH LINE OUTLET. PROVIDE NEW BRANCH LINES AS REQUIRED.
 - SPRINKLERS NEAR UNIT HEATERS SHALL HAVE TEMPERATURE RATINGS IN ACCORDANCE WITH NFPA 13.
 - IT IS UNDERSTOOD, UNLESS SPECIFICALLY INDICATED OTHERWISE, THAT THE PIPE SIZES AS SHOWN ON THE BID DOCUMENTS WILL BE USED.
 - ABOVEGROUND PIPE SHALL HAVE A CORROSION RESISTANCE RATIO (CRR) OF 1.0 OR GREATER.

- HANGER NOTES**
- COORDINATE ALL HANGER TYPES AND LOCATIONS WITH THE STRUCTURAL ENGINEER OF RECORD.
 - PIPES LARGER THAN 4 IN. RUNNING PARALLEL TO BAR JOISTS SHALL BE HUNG FROM TRAPEZOIDAL HANGERS SUPPORTED NEARLY EQUALLY BY TWO JOISTS.
 - ONLY ONE PIPE SHALL BE SUPPORTED FROM A SINGLE TRAPEZOIDAL HANGER UNLESS OTHERWISE APPROVED IN WRITING BY THE STRUCTURAL ENGINEER OF RECORD.
 - 6-INCH AND LARGER PIPES RUNNING PERPENDICULAR TO BAR JOISTS SHALL HAVE THE WEIGHT DISTRIBUTED EVENLY BY PLACING A HANGER AT EACH JOIST.
 - HANGERS WITH MORE THAN 150 POUNDS OF LOAD SHOULD BE ATTACHED TO THE JOIST AT A PANEL POINT.



REVISIONS

No	Date	Description
01	01/22/18	90% OWNER REVIEW
02	01/26/18	PERMIT

NO SUBSTITUTIONS SHALL BE ALLOWED UNLESS OTHERWISE NOTED (REFER TO SPECIFICATIONS)

cd
CODE CONSULTANTS, INC.
 2040 WOODLAND PKWY, SUITE 200
 ST. LOUIS, MISSOURI 63146-4235
 314-991-2833
 www.codeconsultants.com

CASCO
 10877 WATSON ROAD
 ST. LOUIS, MO 63127
 PROJECT MANAGERS

BID DATE: 1/16/18
 CIO NAME: 2/17/2018
 DRAWN BY: JCS
 PROJECT NO.: 2018003-06-002
 CHECKED BY: SGP
 PROTOTYPE:

FIRE PROTECTION ENGINEER OF RECORD:
 WILLIAM B. SMITH, PE
 LICENSE NO. 68528
 2040 WOODLAND PKWY, SUITE 200
 ST. LOUIS, MO 63146-4235
 PHONE: 314-991-2833
 COMPUTER CERTIFICATE OF AUTHORITY: 01/29/18

BABIES'R'US

GLOBAL RESOURCE CENTER
 ONE GEOFFREY WAY
 WAYNE, NJ 07470
 (973) 637-3500

THIS DRAWING IS THE EXCLUSIVE PROPERTY OF TOYS "R" US. THE INFORMATION SHOWN MAY NOT BE USED NOR THE DRAWINGS REPRODUCED WITHOUT PERMISSION OF TOYS "R" US.

Location
LAKELAND, FLORIDA
 3770 US HIGHWAY 98 NORTH-33809

Drawing Title
FIRE SPRINKLER PLAN, NOTES AND DETAILS

Scale _____ Date 1/26/18

Sheet No.
FP101