

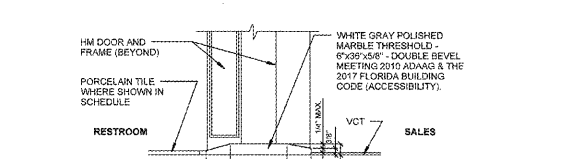
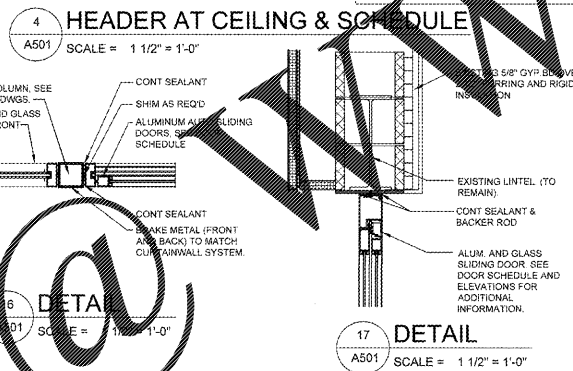
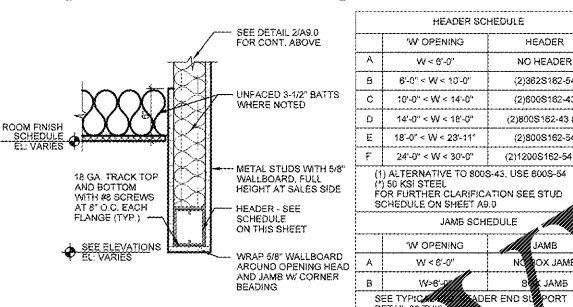
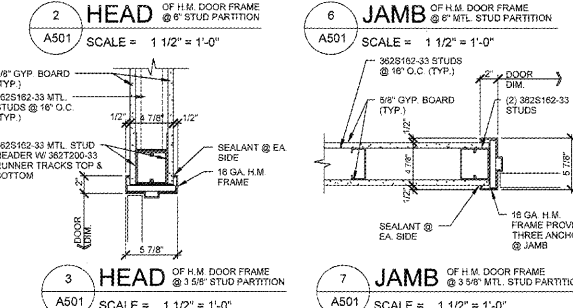
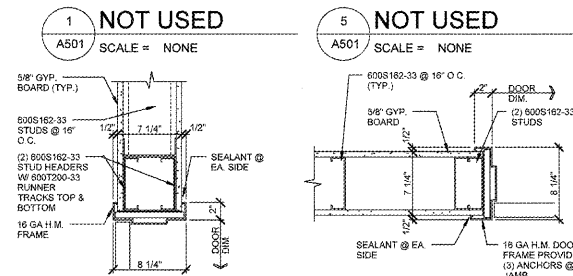
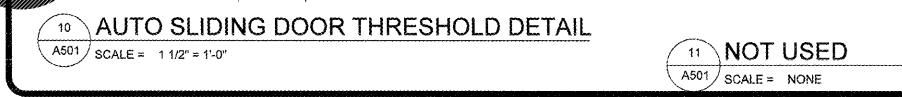
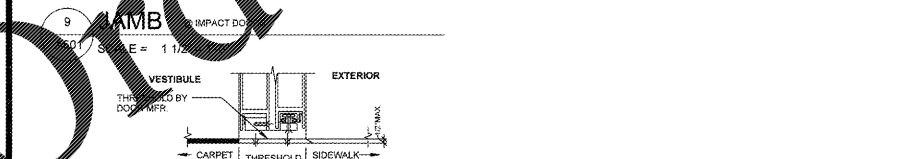
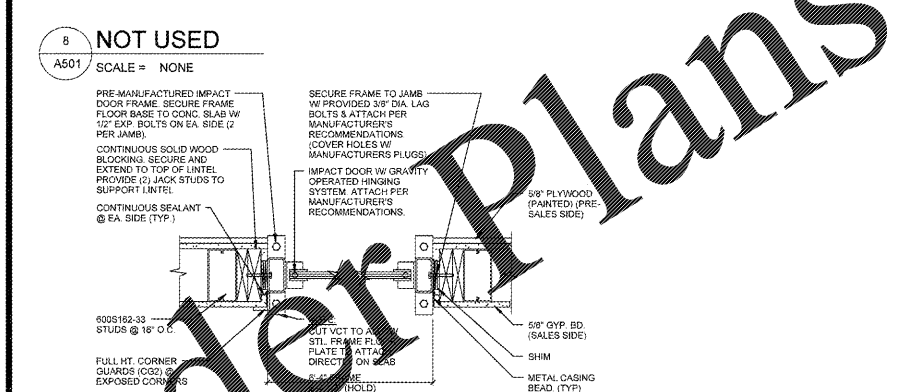
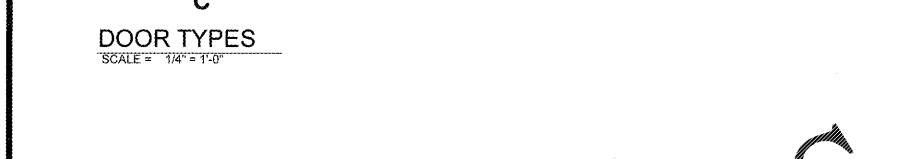
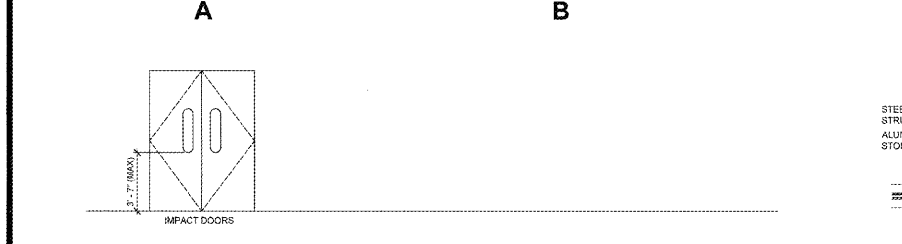
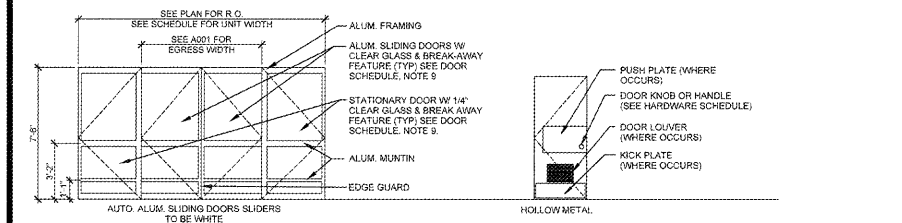
DOOR SCHEDULE

| NO. | LOCATION | TYPE | W | H | T | MATERIAL | JAMB | HEAD | SILL | COMMENTS | HARDWARE GROUP |
|-----|------------------------------|------|-------------|-------|--------|----------|------------|--------|--------|--|----------------|
| 01 | EXTERIOR TO SALES ENTRY | A | 12'-0" 1/2" | 7'-6" | 4 1/2" | ALUM | 16A501 SIM | 17A501 | 10A501 | SEE NOTES #3, 8, 9, & 10 | 1 |
| 02 | SALES TO MERCHANDISE PICK UP | B | 3'-0" | 7'-0" | 3 3/4" | HM | 7A501 | 3A501 | - | SEE NOTES #2, 5 & 11 | 4 |
| 03 | SALES TO MERCHANDISE PICK UP | B | 3'-0" | 7'-0" | 3 3/4" | HM | 7A501 | 3A501 | - | SEE NOTES #2 & 5 | 4 |
| 04 | SALES TO PROCESSING ROOM | B | 3'-0" | 7'-0" | 3 3/4" | HM | 8A501 | 2A501 | - | SEE NOTES #2 & 5 | 4 |
| 05 | HALL TO RESTROOM | B | 3'-0" | 7'-0" | 3 3/4" | HM | 7A501 | 3A501 | 12A501 | W/ 12"x12" LOUVER, SEE NOTES #2, 5, 9 & 11 | 4 |
| 06 | HALL TO MOTHERS ROOM | B | 3'-0" | 7'-0" | 3 3/4" | HM | 7A501 | 3A501 | - | SEE NOTES #2, 5 & 11 | 4 |
| 07 | SALES TO PRE SALES | C | 6'-0" | 8'-0" | 1 3/4" | PLASTIC | 5A501 | 15A501 | 14A501 | H/D IMPACT DOORS, SEE NOTE #4 | 7 |
| 08 | PRE SALES TO EXTERIOR | - | - | - | - | - | - | - | - | EXISTING TO REMAIN | - |
| 09 | SALES TO EXTERIOR | - | - | - | - | - | - | - | - | EXISTING TO REMAIN | - |

- NOTES:**
- EXTERIOR H.M. DOORS & FRAME TO BE PAINTED AS INDICATED ON EXTERIOR ELEVATIONS. INTERIOR FACE - PAINTED PNT1 'EXTRA WHITE', SEMI-GLOSS FINISH.
 - INTERIOR H.M. DOOR & FRAMES TO BE PAINTED PNT1 'EXTRA WHITE', SEMI-GLOSS FINISH.
 - AUTO SLIDING DOORS TO HAVE WHITE FINISH.
 - H/D IMPACT DOORS, SUPPLIED BY OWNER & INSTALLED BY CONTRACTOR. REFER TO SPEC. FOR OTHER REQUIREMENTS. COLOR CLOUD GRAY. FRAME AND HARDWARE INCLUDED.
 - DOOR CLOSER TO BE MOUNTED ON ROOM SIDE OF DOOR.
 - INTERIOR FACE OF TOILET ROOM DOORS & FRAMES TO BE PAINTED PNT1 'EXTRA WHITE', SEMI-GLOSS FINISH.
 - PROVIDE DOOR HOLD OPEN.
 - WITH FACTORY INSTALLED 'ENTRANCE' LABELS TO BE INSTALLED ON EXTERIOR FACE OF DOOR.
 - EXTERIOR AUTO SLIDING DOORS TO HAVE CLEAR GLASS PER FLORIDA PRODUCT APPROVAL NUMBER.
 - FACTORY INSTALLED 'DO NOT ENTER' LABELS TO BE INSTALLED ON EXTERIOR FACE OF DOOR.
 - DOOR LOUVER REQUIRED.

HARDWARE SCHEDULE

| GROUP 1 TO HAVE: | GROUP 2 TO HAVE: | GROUP 3 TO HAVE: | GROUP 4 TO HAVE: |
|--|---|------------------|---|
| 1 CONTINUOUS HINGE HAGER 750-902 1 PUSH PLATE HAGER 1948, 1930, 320 MOUNT HORIZ. BOTTOM @ 2" A.F.F. | 1 CONTINUOUS HINGE HAGER 750-902 1 DR. CLOSER HAGER 750-902 3 SILENCERS HAGER 584 1 PUSH PLATE HAGER 1948, 1930, 320 MOUNT HORIZ. BOTTOM @ 2" A.F.F. | NOT USED | 1 CONTINUOUS HINGE HAGER 750-902 1 LOCK HAGER 750-902 1 DR. CLOSER HAGER 750-902 3 SILENCERS HAGER 584 1 PUSH PLATE HAGER 1948, 1930, 320 MOUNT HORIZ. BOTTOM @ 2" A.F.F. |



ROOM FINISH SCHEDULE

| ROOM NO. | ROOM NAME | FLOOR | BASE | WALLS | CEILING | NOTE |
|----------|---------------------|-------|------|-------|---------|----------------------------|
| 101 | SALES AREA | X | X | X | X | SEE NOTE #4 FOR ALL ROOMS. |
| 102 | MERCHANDISE PICK UP | X | X | X | X | |
| 103 | UNISEX RESTROOM | X | X | X | X | |
| 104 | HALL | X | X | X | X | |
| 105 | MOTHERS ROOM | X | X | X | X | |
| 106 | RESTROOMS | X | X | X | X | |
| 107 | PROCESSING ROOM | X | X | X | X | |
| 108 | WAITING AREA | X | X | X | X | |
| 109 | BAR/REGISTRY AREA | X | X | X | X | |

- NOTES:**
- REFER TO SHEET A102 FOR INTERIOR FINISH DETAILS.
 - PAINT ENTIRE CEILING STRUCTURE OF SALES AND PRE-SALES PNT1, INCLUDING, BUT NOT LIMITED TO, UNDERSIDE OF ROOF DECK, JOISTS, ETC.
 - PAINT COLUMNS - PNT1 FROM 4'-0" A.F.F. TO ROOF DECK ABOVE IN SALES AREA.
 - ALL PAINT FINISH TO BE SEMI-GLOSS (U.O.N.).
 - SEE ENLARGED PLANS & INTERIOR ELEVATIONS FOR LOCATIONS OF WAINSCOT PANELS.
 - ALL MOUNTING BOARDS TO BE PAINTED TO MATCH WALLS PRIOR TO DEVICE INSTALLATION.
 - SEE DETAIL 3A103 FOR UNISEX RESTROOM ACCENT FLOORING.
 - THE CONTRACTOR SHALL PROVIDE WATER-RESISTANT BOARD AT SALES ENTRANCE & UNISEX RESTROOM.
 - PAINT MAIN SPRINKLER RISER - PNT1 (RED). PAINT ALL OTHER SPRINKLER LINES TO MATCH DECK STRUCTURE.
 - NOT USED.
 - ALL SURPLUS VCT UP TO 5% OF FLOOR AREA SHALL BE STORED UNDER THE BASE DECK OF THE BUILDING, LOCATED AT THE DIRECTION OF THE CONTRACTOR (REF).
 - CONTRACTOR TO REPLACE UP TO 10% OF EXCESS QUANTITY BOXES OF FLOORING DAMAGED PRIOR TO RAND OPENING.
 - NOT USED.
 - PROVIDE ACTYLIC COXY PAINT (PNT1) TO MATCH FINISH (AS NOTED).

INTERIOR FINISH & MATERIALS LIST

| CODE | MATERIAL | MANUFACTURER | MANUFACTURER NUMBER | LOCATION | FLAME SPREAD RATING | SMOKE DEVELOPMENT RATING | REMARKS |
|-------|------------------------|--------------|---------------------|-----------------------|---------------------|--------------------------|------------|
| ACT1 | ACUSTICAL CEILING TILE | ARMSTRONG | 3600 'WHITE' | CUSTOMER SERVICE AREA | LESS THAN 25 | LESS THAN 50 | WHITE GRID |
| ACT2 | ACUSTICAL CEILING TILE | ARMSTRONG | 3600 'WHITE' | MOTHERS ROOM | LESS THAN 25 | LESS THAN 50 | WHITE GRID |
| ACT3 | ACUSTICAL CEILING TILE | ARMSTRONG | 3600 'WHITE' | UNISEX RESTROOM | LESS THAN 25 | LESS THAN 50 | WHITE GRID |
| ACT4 | ACUSTICAL CEILING TILE | ARMSTRONG | 3600 'WHITE' | SALES AREA | LESS THAN 25 | LESS THAN 50 | WHITE GRID |
| ACT5 | ACUSTICAL CEILING TILE | ARMSTRONG | 3600 'WHITE' | RESTROOMS | LESS THAN 25 | LESS THAN 50 | WHITE GRID |
| ACT6 | ACUSTICAL CEILING TILE | ARMSTRONG | 3600 'WHITE' | SALES AREA | LESS THAN 25 | LESS THAN 50 | WHITE GRID |
| ACT7 | ACUSTICAL CEILING TILE | ARMSTRONG | 3600 'WHITE' | RESTROOMS | LESS THAN 25 | LESS THAN 50 | WHITE GRID |
| ACT8 | ACUSTICAL CEILING TILE | ARMSTRONG | 3600 'WHITE' | SALES AREA | LESS THAN 25 | LESS THAN 50 | WHITE GRID |
| ACT9 | ACUSTICAL CEILING TILE | ARMSTRONG | 3600 'WHITE' | RESTROOMS | LESS THAN 25 | LESS THAN 50 | WHITE GRID |
| ACT10 | ACUSTICAL CEILING TILE | ARMSTRONG | 3600 'WHITE' | SALES AREA | LESS THAN 25 | LESS THAN 50 | WHITE GRID |
| ACT11 | ACUSTICAL CEILING TILE | ARMSTRONG | 3600 'WHITE' | RESTROOMS | LESS THAN 25 | LESS THAN 50 | WHITE GRID |
| ACT12 | ACUSTICAL CEILING TILE | ARMSTRONG | 3600 'WHITE' | SALES AREA | LESS THAN 25 | LESS THAN 50 | WHITE GRID |
| ACT13 | ACUSTICAL CEILING TILE | ARMSTRONG | 3600 'WHITE' | RESTROOMS | LESS THAN 25 | LESS THAN 50 | WHITE GRID |
| ACT14 | ACUSTICAL CEILING TILE | ARMSTRONG | 3600 'WHITE' | SALES AREA | LESS THAN 25 | LESS THAN 50 | WHITE GRID |
| ACT15 | ACUSTICAL CEILING TILE | ARMSTRONG | 3600 'WHITE' | RESTROOMS | LESS THAN 25 | LESS THAN 50 | WHITE GRID |
| ACT16 | ACUSTICAL CEILING TILE | ARMSTRONG | 3600 'WHITE' | SALES AREA | LESS THAN 25 | LESS THAN 50 | WHITE GRID |
| ACT17 | ACUSTICAL CEILING TILE | ARMSTRONG | 3600 'WHITE' | RESTROOMS | LESS THAN 25 | LESS THAN 50 | WHITE GRID |
| ACT18 | ACUSTICAL CEILING TILE | ARMSTRONG | 3600 'WHITE' | SALES AREA | LESS THAN 25 | LESS THAN 50 | WHITE GRID |
| ACT19 | ACUSTICAL CEILING TILE | ARMSTRONG | 3600 'WHITE' | RESTROOMS | LESS THAN 25 | LESS THAN 50 | WHITE GRID |
| ACT20 | ACUSTICAL CEILING TILE | ARMSTRONG | 3600 'WHITE' | SALES AREA | LESS THAN 25 | LESS THAN 50 | WHITE GRID |
| ACT21 | ACUSTICAL CEILING TILE | ARMSTRONG | 3600 'WHITE' | RESTROOMS | LESS THAN 25 | LESS THAN 50 | WHITE GRID |
| ACT22 | ACUSTICAL CEILING TILE | ARMSTRONG | 3600 'WHITE' | SALES AREA | LESS THAN 25 | LESS THAN 50 | WHITE GRID |
| ACT23 | ACUSTICAL CEILING TILE | ARMSTRONG | 3600 'WHITE' | RESTROOMS | LESS THAN 25 | LESS THAN 50 | WHITE GRID |
| ACT24 | ACUSTICAL CEILING TILE | ARMSTRONG | 3600 'WHITE' | SALES AREA | LESS THAN 25 | LESS THAN 50 | WHITE GRID |
| ACT25 | ACUSTICAL CEILING TILE | ARMSTRONG | 3600 'WHITE' | RESTROOMS | LESS THAN 25 | LESS THAN 50 | WHITE GRID |
| ACT26 | ACUSTICAL CEILING TILE | ARMSTRONG | 3600 'WHITE' | SALES AREA | LESS THAN 25 | LESS THAN 50 | WHITE GRID |
| ACT27 | ACUSTICAL CEILING TILE | ARMSTRONG | 3600 'WHITE' | RESTROOMS | LESS THAN 25 | LESS THAN 50 | WHITE GRID |
| ACT28 | ACUSTICAL CEILING TILE | ARMSTRONG | 3600 'WHITE' | SALES AREA | LESS THAN 25 | LESS THAN 50 | WHITE GRID |
| ACT29 | ACUSTICAL CEILING TILE | ARMSTRONG | 3600 'WHITE' | RESTROOMS | LESS THAN 25 | LESS THAN 50 | WHITE GRID |
| ACT30 | ACUSTICAL CEILING TILE | ARMSTRONG | 3600 'WHITE' | SALES AREA | LESS THAN 25 | LESS THAN 50 | WHITE GRID |
| ACT31 | ACUSTICAL CEILING TILE | ARMSTRONG | 3600 'WHITE' | RESTROOMS | LESS THAN 25 | LESS THAN 50 | WHITE GRID |
| ACT32 | ACUSTICAL CEILING TILE | ARMSTRONG | 3600 'WHITE' | SALES AREA | LESS THAN 25 | LESS THAN 50 | WHITE GRID |
| ACT33 | ACUSTICAL CEILING TILE | ARMSTRONG | 3600 'WHITE' | RESTROOMS | LESS THAN 25 | LESS THAN 50 | WHITE GRID |
| ACT34 | ACUSTICAL CEILING TILE | ARMSTRONG | 3600 'WHITE' | SALES AREA | LESS THAN 25 | LESS THAN 50 | WHITE GRID |
| ACT35 | ACUSTICAL CEILING TILE | ARMSTRONG | 3600 'WHITE' | RESTROOMS | LESS THAN 25 | LESS THAN 50 | WHITE GRID |
| ACT36 | ACUSTICAL CEILING TILE | ARMSTRONG | 3600 'WHITE' | SALES AREA | LESS THAN 25 | LESS THAN 50 | WHITE GRID |
| ACT37 | ACUSTICAL CEILING TILE | ARMSTRONG | 3600 'WHITE' | RESTROOMS | LESS THAN 25 | LESS THAN 50 | WHITE GRID |
| ACT38 | ACUSTICAL CEILING TILE | ARMSTRONG | 3600 'WHITE' | SALES AREA | LESS THAN 25 | LESS THAN 50 | WHITE GRID |
| ACT39 | ACUSTICAL CEILING TILE | ARMSTRONG | 3600 'WHITE' | RESTROOMS | LESS THAN 25 | LESS THAN 50 | WHITE GRID |
| ACT40 | ACUSTICAL CEILING TILE | ARMSTRONG | 3600 'WHITE' | SALES AREA | LESS THAN 25 | LESS THAN 50 | WHITE GRID |
| ACT41 | ACUSTICAL CEILING TILE | ARMSTRONG | 3600 'WHITE' | RESTROOMS | LESS THAN 25 | LESS THAN 50 | WHITE GRID |
| ACT42 | ACUSTICAL CEILING TILE | ARMSTRONG | 3600 'WHITE' | SALES AREA | LESS THAN 25 | LESS THAN 50 | WHITE GRID |
| ACT43 | ACUSTICAL CEILING TILE | ARMSTRONG | 3600 'WHITE' | RESTROOMS | LESS THAN 25 | LESS THAN 50 | WHITE GRID |
| ACT44 | ACUSTICAL CEILING TILE | ARMSTRONG | 3600 'WHITE' | SALES AREA | LESS THAN 25 | LESS THAN 50 | WHITE GRID |
| ACT45 | ACUSTICAL CEILING TILE | ARMSTRONG | 3600 'WHITE' | RESTROOMS | LESS THAN 25 | LESS THAN 50 | WHITE GRID |
| ACT46 | ACUSTICAL CEILING TILE | ARMSTRONG | 3600 'WHITE' | SALES AREA | LESS THAN 25 | LESS THAN 50 | WHITE GRID |
| ACT47 | ACUSTICAL CEILING TILE | ARMSTRONG | 3600 'WHITE' | RESTROOMS | LESS THAN 25 | LESS THAN 50 | WHITE GRID |
| ACT48 | ACUSTICAL CEILING TILE | ARMSTRONG | 3600 'WHITE' | SALES AREA | LESS THAN 25 | LESS THAN 50 | WHITE GRID |
| ACT49 | ACUSTICAL CEILING TILE | ARMSTRONG | 3600 'WHITE' | RESTROOMS | LESS THAN 25 | LESS THAN 50 | WHITE GRID |
| ACT50 | ACUSTICAL CEILING TILE | ARMSTRONG | 3600 'WHITE' | SALES AREA | LESS THAN 25 | LESS THAN 50 | WHITE GRID |
| ACT51 | ACUSTICAL CEILING TILE | ARMSTRONG | 3600 'WHITE' | RESTROOMS | LESS THAN 25 | LESS THAN 50 | WHITE GRID |
| ACT52 | ACUSTICAL CEILING TILE | ARMSTRONG | 3600 'WHITE' | SALES AREA | LESS THAN 25 | LESS THAN 50 | WHITE GRID |
| ACT53 | ACUSTICAL CEILING TILE | ARMSTRONG | 3600 'WHITE' | RESTROOMS | LESS THAN 25 | LESS THAN 50 | WHITE GRID |
| ACT54 | ACUSTICAL CEILING TILE | ARMSTRONG | 3600 'WHITE' | SALES AREA | LESS THAN 25 | LESS THAN 50 | WHITE GRID |
| ACT55 | ACUSTICAL CEILING TILE | ARMSTRONG | 3600 'WHITE' | RESTROOMS | LESS THAN 25 | LESS THAN 50 | WHITE GRID |
| ACT56 | ACUSTICAL CEILING TILE | ARMSTRONG | 3600 'WHITE' | SALES AREA | LESS THAN 25 | LESS THAN 50 | WHITE GRID |
| ACT57 | ACUSTICAL CEILING TILE | ARMSTRONG | 3600 'WHITE' | RESTROOMS | LESS THAN 25 | LESS THAN 50 | WHITE GRID |
| ACT58 | ACUSTICAL CEILING TILE | ARMSTRONG | 3600 'WHITE' | SALES AREA | LESS THAN 25 | LESS THAN 50 | WHITE GRID |
| ACT59 | ACUSTICAL CEILING TILE | ARMSTRONG | 3600 'WHITE' | RESTROOMS | LESS THAN 25 | LESS THAN 50 | WHITE GRID |
| ACT60 | ACUSTICAL CEILING TILE | ARMSTRONG | 3600 'WHITE' | SALES AREA | LESS THAN 25 | LESS THAN 50 | WHITE GRID |
| ACT61 | ACUSTICAL CEILING TILE | ARMSTRONG | 3600 'WHITE' | RESTROOMS | LESS THAN 25 | LESS THAN 50 | WHITE GRID |
| ACT62 | ACUSTICAL CEILING TILE | ARMSTRONG | 3600 'WHITE' | SALES AREA | LESS THAN 25 | LESS THAN 50 | WHITE GRID |
| ACT63 | ACUSTICAL CEILING TILE | ARMSTRONG | 3600 'WHITE' | RESTROOMS | LESS THAN 25 | LESS THAN 50 | WHITE GRID |
| ACT64 | ACUSTICAL CEILING TILE | ARMSTRONG | 3600 'WHITE' | SALES AREA | LESS THAN 25 | LESS THAN 50 | WHITE GRID |
| ACT65 | ACUSTICAL CEILING TILE | ARMSTRONG | 3600 'WHITE' | RESTROOMS | LESS THAN 25 | LESS THAN 50 | WHITE GRID |
| ACT66 | ACUSTICAL CEILING TILE | ARMSTRONG | 3600 'WHITE' | SALES AREA | LESS THAN 25 | LESS THAN 50 | WHITE GRID |
| ACT67 | ACUSTICAL CEILING TILE | ARMSTRONG | 3600 'WHITE' | RESTROOMS | LESS THAN 25 | LESS THAN 50 | WHITE GRID |
| ACT68 | ACUSTICAL CEILING TILE | ARMSTRONG | 3600 'WHITE' | SALES AREA | LESS THAN 25 | LESS THAN 50 | WHITE GRID |
| ACT69 | ACUSTICAL CEILING TILE | ARMSTRONG | 3600 'WHITE' | RESTROOMS | LESS THAN 25 | LESS THAN 50 | WHITE GRID |
| ACT70 | ACUSTICAL CEILING TILE | ARMSTRONG | 3600 'WHITE' | SALES AREA | LESS THAN 25 | LESS THAN 50 | WHITE GRID |
| ACT71 | ACUSTICAL CEILING TILE | ARMSTRONG | 3600 'WHITE' | RESTROOMS | LESS THAN 25 | LESS THAN 50 | WHITE GRID |
| ACT72 | ACUSTICAL CEILING TILE | ARMSTRONG | 3600 'WHITE' | SALES AREA | LESS THAN 25 | LESS THAN 50 | WHITE GRID |
| ACT73 | ACUSTICAL CEILING TILE | ARMSTRONG | 3600 'WHITE' | RESTROOMS | LESS THAN 25 | LESS THAN 50 | WHITE GRID |
| ACT74 | ACUSTICAL CEILING TILE | ARMSTRONG | 3600 'WHITE' | SALES AREA | LESS THAN 25 | LESS THAN 50 | WHITE GRID |
| ACT75 | ACUSTICAL CEILING TILE | ARMSTRONG | 3600 'WHITE' | RESTROOMS | LESS THAN 25 | LESS THAN 50 | WHITE GRID |
| ACT76 | ACUSTICAL CEILING TILE | ARMSTRONG | 3600 'WHITE' | SALES AREA | LESS THAN 25 | LESS THAN 50 | WHITE GRID |
| ACT77 | ACUSTICAL CEILING TILE | ARMSTRONG | 3600 'WHITE' | RESTROOMS | LESS THAN 25 | LESS THAN 50 | WHITE GRID |
| ACT78 | ACUSTICAL CEILING TILE | ARMSTRONG | 3600 'WHITE' | SALES AREA | LESS THAN 25 | LESS THAN 50 | WHITE GRID |
| ACT79 | ACUSTICAL CEILING TILE | ARMSTRONG | 3600 'WHITE' | RESTROOMS | LESS THAN 25 | LESS THAN 50 | WHITE GRID |
| ACT80 | ACUSTICAL CEILING TILE | ARMSTRONG | 3600 'WHITE' | SALES AREA | LESS THAN 25 | LESS THAN 50 | WHITE GRID |
| ACT81 | ACUSTICAL CEILING TILE | ARMSTRONG | 3600 'WHITE' | RESTROOMS | LESS THAN 25 | LESS THAN 50 | WHITE GRID |
| ACT82 | ACUSTICAL CEILING TILE | ARMSTRONG | 3600 'WHITE' | SALES AREA | LESS THAN 25 | LESS THAN 50 | WHITE GRID |
| ACT83 | ACUSTICAL CEILING TILE | ARMSTRONG | 3600 'WHITE' | RESTROOMS | LESS THAN 25 | LESS THAN 50 | WHITE GRID |
| ACT84 | ACUSTICAL CEILING TILE | ARMSTRONG | 3600 'WHITE' | SALES AREA | LESS THAN 25 | LESS THAN 50 | WHITE GRID |
| ACT85 | ACUSTICAL CEILING TILE | ARMSTRONG | 3600 'WHITE' | RESTROOMS | LESS THAN 25 | LESS THAN 50 | WHITE GRID |
| ACT86 | ACUSTICAL CEILING TILE | ARMSTRONG | 3600 'WHITE' | SALES AREA | LESS THAN 25 | LESS THAN 50 | WHITE GRID |
| ACT87 | ACUSTICAL CEILING TILE | ARMSTRONG | 3600 'WHITE' | RESTROOMS | LESS THAN 25 | LESS THAN 50 | WHITE GRID |
| ACT88 | ACUSTICAL CEILING TILE | ARMSTRONG | 3600 'WHITE' | SALES AREA | LESS THAN 25 | LESS THAN 50 | WHITE GRID |
| ACT89 | ACUSTICAL CEILING TILE | ARMSTRONG | 3600 'WHITE' | RESTROOMS | LESS THAN 25 | LESS THAN 50 | WHITE GRID |
| ACT90 | ACUSTICAL CEILING TILE | ARMSTRONG | 3600 'WHITE' | SALES AREA | LESS THAN 25 | LESS THAN 50 | WHITE GRID |
| ACT91 | ACUSTICAL CEILING TILE | ARMSTRONG | 3600 'WHITE' | RESTROOMS | LESS THAN 25 | LESS THAN 50 | WHITE GRID |
| ACT92 | ACUSTICAL CEILING TILE | ARMSTRONG | 3600 'WHITE' | SALES AREA | LESS THAN 25 | LESS THAN 50 | WHITE GRID |
| ACT93 | ACUSTICAL CEILING TILE | ARMSTRONG | 3600 'WHITE' | RESTROOMS | LESS THAN 25 | LESS THAN 50 | WHITE GRID |
| ACT94 | ACUSTICAL CEILING | | | | | | |