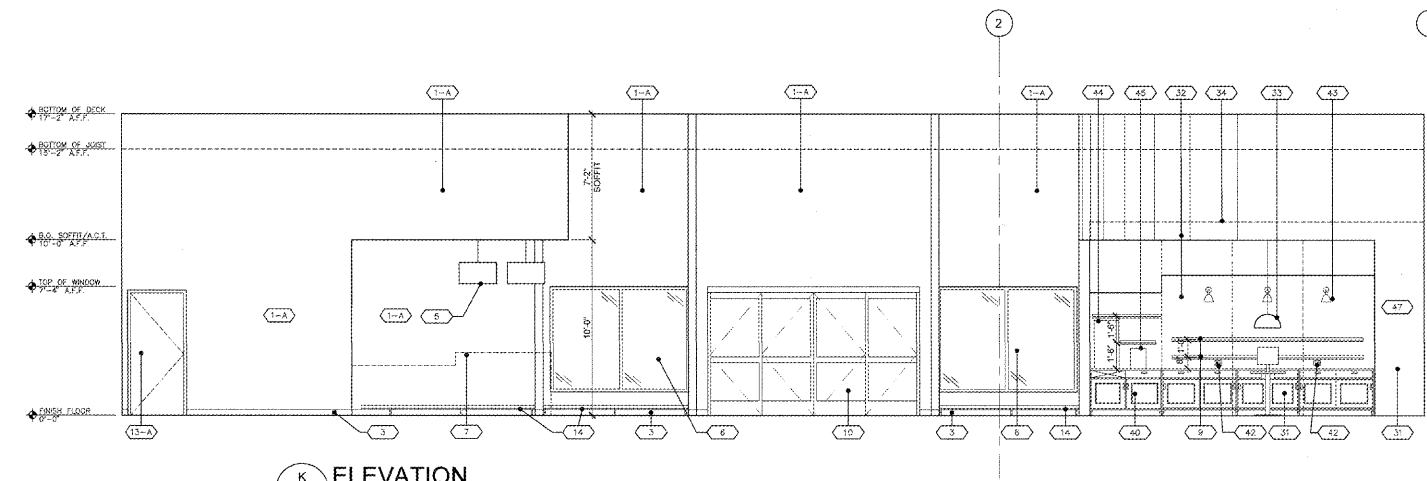
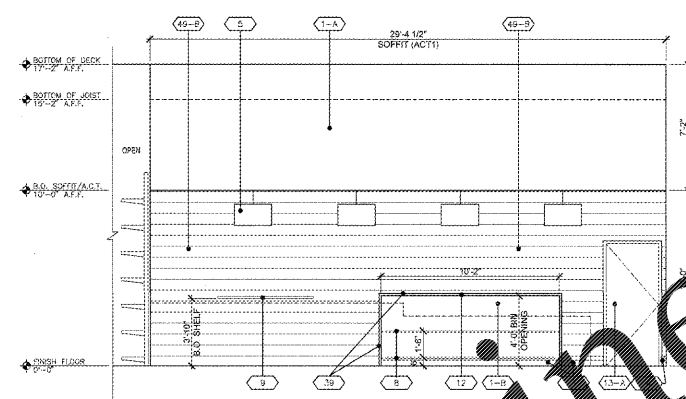


REVISIONS

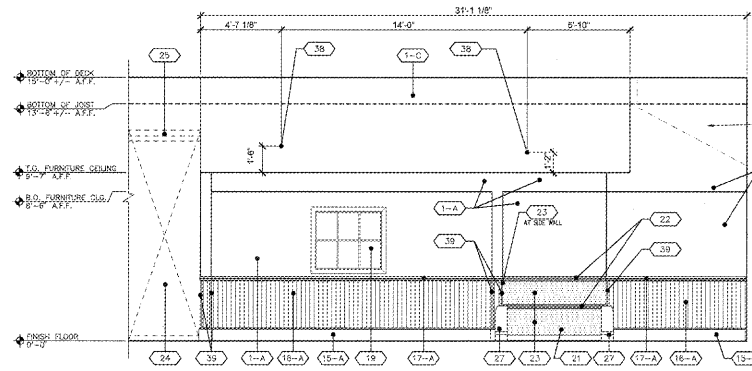
No.	Date	Description
1	01/22/18	90% OWNER REVIEW
2	01/22/18	ISSUED FOR PERMIT/ID



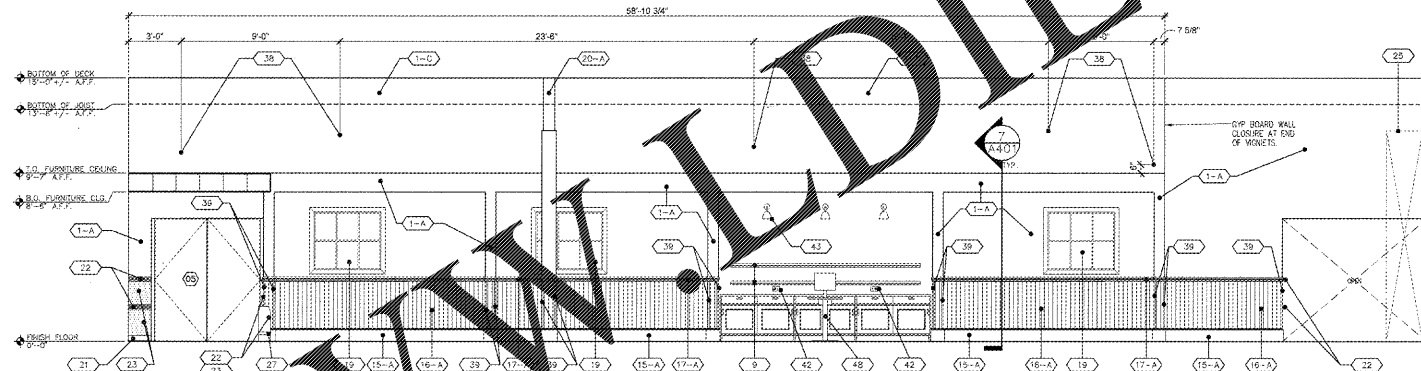
K ELEVATION
A403 SCALE = 1/4" = 1'-0"



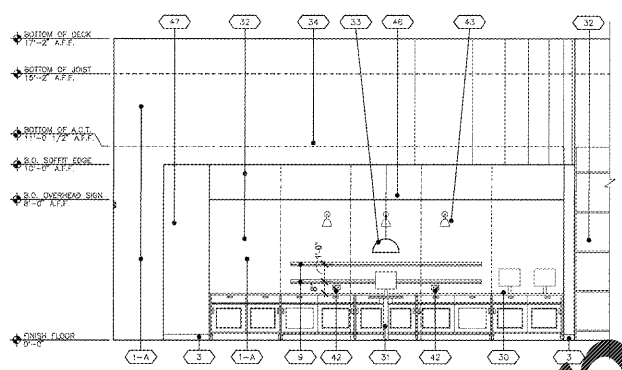
J ELEVATION
A403 SCALE = 1/4" = 1'-0"



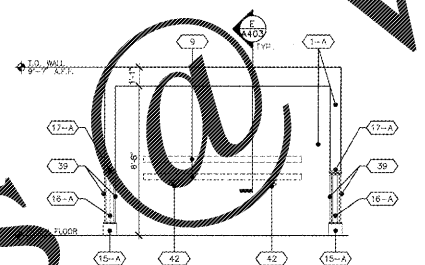
I ELEVATION
A403 SCALE = 1/4" = 1'-0"



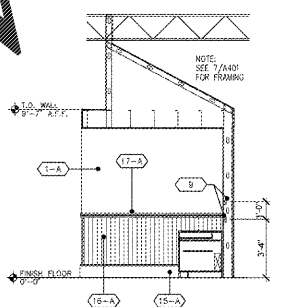
H ELEVATION
A403 SCALE = 1/4" = 1'-0"



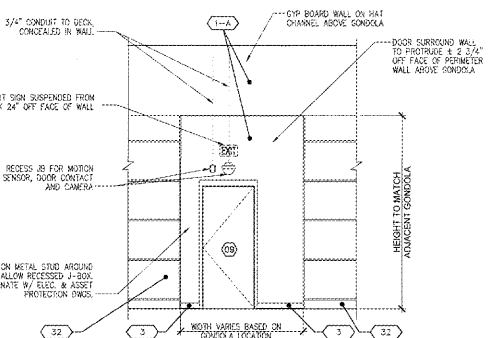
G ELEVATION
A403 SCALE = 1/4" = 1'-0"



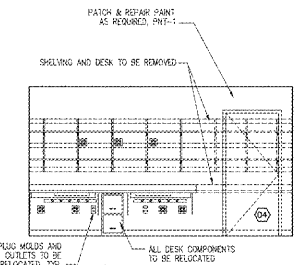
F ELEVATION
A403 SCALE = 1/4" = 1'-0"



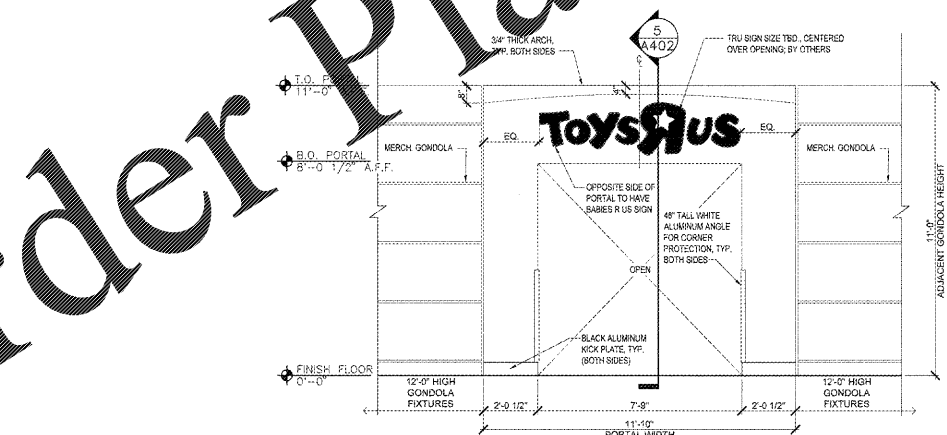
E ELEVATION
A403 SCALE = 1/4" = 1'-0"



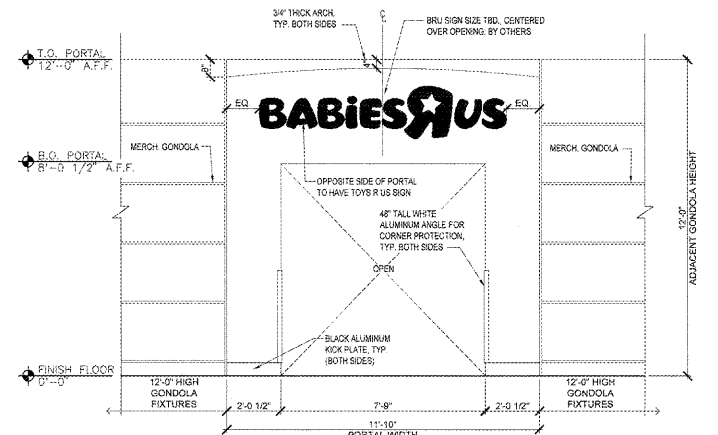
D ELEVATION
A403 SCALE = 1/4" = 1'-0"



C ELEVATION
A403 SCALE = 1/4" = 1'-0"



B TRANSITION PORTAL ELEVATION
A403 SCALE = 3/8" = 1'-0"



A TRANSITION PORTAL ELEVATION
A403 SCALE = 3/8" = 1'-0"

LEGEND

CODE	BUILDING MATERIAL	CODE	BUILDING MATERIAL
1	GYP. BD. PARTITION PAINTED	35	48" TALL WHITE ALUMINUM CHANNEL
2	PREPARE WALL TO RECEIVE WALL COVERING BY TRU	36	BLACK ALUMINUM NICK PLATE
3	VINYL BASE (V84 - "DARK WHITE")	37	OFFT WRAP TABLE
4	VINYL BASE (V84 - "BLUE/ST")	38	OUTLET FOR ILLUMINATED GRAPHIC
5	(4) PENDANT LIGHTS TYP. B.O. PENDANT AT 8'-0" A.F.F. SEE DE1 PLAN	39	OPERNER GUARD (CG3)
6	EXISTING ALUMINUM & GLASS STOREFRONT SYSTEM, WHITE FINISH	40	BEVERAGE COUNTER
7	LINE OF CUSTOMER SERVICE DESK	41	STORAGE CABINET
8	BUMPER GUARD (BG3)	42	USB OUTLET MOUNTED AT 36" A.F.F.
9	PICTURE SHELF. ADD BLOODING AS REQUIRED.	43	WALL SCIENCE. SEE DE1 SHEET FOR MOUNTING HEIGHTS
10	TRANSOM	44	REFRIGERATOR
11	5" WOOD CASING, PAINTED	45	COFFEE MACHINE
12	CORNER GUARDS (CG2)	46	FIXTURE UPRITE BEHIND
13	LED LIGHT BOX/WINDOW FRAME	47	BOX CORNER
14	H.W. DOOR & FRAME, PAINTED	48	NURSERY DESIGN CENTER DESK
15	6" HIGH WOOD MOLDING, PAINTED. SEE DETAIL 10406	49	TIMBER WEATHERBOARD SEE 24406
16	WAINSCOT BEADBOARD (WPS), PAINTED		
17	3" WOOD CASING, PAINTED		
18	CORNER GUARDS (CG2)		
19	LED LIGHT BOX/WINDOW FRAME		
20	COLUMN, PAINTED, WITH STAINLESS STEEL WRAP. SEE DETAIL 34406		
21	4" VINYL BASE (V81)		
22	3" BUMPER GUARD (BG1)		
23	WAINSCOT PANELS (WPS)		
24	STL. STORE FIXTURES SHOWN AS DASHED		
25	ALIGNMENT PLATE (REFER TO 18406 FOR LOCATIONS)		
26	CORNER GUARD (CG1)		
27	CART GUARD. SEE DETAIL 84408		
28	3/4" THICK CONTRA BOARD PANELS SUSPENDED FROM JOIST ABOVE.		
29	LED LIGHT BOX/WINDOW FRAME		
30	REGISTRY KIOSK		
31	REGISTRY DESK		
32	MERCH FIXTURE BY OTHERS		
33	DOWNLIGHT, B.O. LIGHT AT 8'-0" A.F.F. SEE 84401		
34	SOFFIT (ACT.) @ 11'-0 1/2" A.F.F.		
35	COLOR		
A	PNT-1		
B	PNT-2		
C	PNT-4		

NO SUBSTITUTIONS SHALL BE ALLOWED UNLESS OTHERWISE NOTED (REFER TO SPECIFICATIONS)

DESIGNED FOR: FLORIDA BUILDING CODE, 6TH EDITION (2017).

CASCO
Architecture + Engineering
10877 WATSON ROAD
SAINT LOUIS, MO 63127
TEL: (314) 821-1100

BD DATE: 01/22/18 PROJECT NO.: 918219
CAD NAME: JMS CHECKED BY: JMS
PROJECT TYPE: RETAIL

CASCO PROFESSIONAL SERVICES LLC
LIC # 00002947 EXPIRES 02/28/19
PROFESSIONAL OF RECORD
JAMES A. SCHMITT
LIC # 009529 EXPIRES 02/28/19

BABIESRUS

GLOBAL RESOURCE CENTER
ONE GILBERT WAY
WAYNE, NJ 07470
973-817-5555

THIS DRAWING IS THE EXCLUSIVE PROPERTY OF TOYS 'R' US. THE INFORMATION SHOWN MAY NOT BE USED NOR THE DRAWINGS REPRODUCED WITHOUT PERMISSION OF TOYS 'R' US.

Location
LAKELAND, FLORIDA
3770 US HIGHWAY 98 NORTH 33809

Drawing Title
INTERIOR ELEVATIONS & DETAILS

Scale AS NOTED Date 1/29/18

Sheet No. **A403**

Order Plans @ WWW.WLDLINE.COM