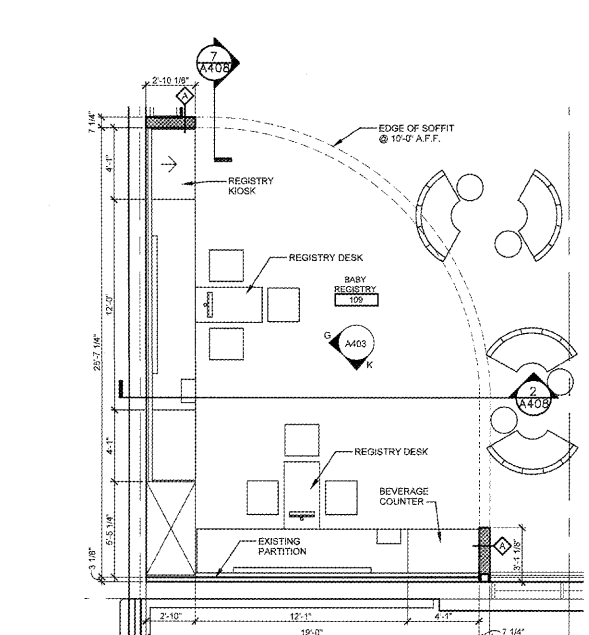
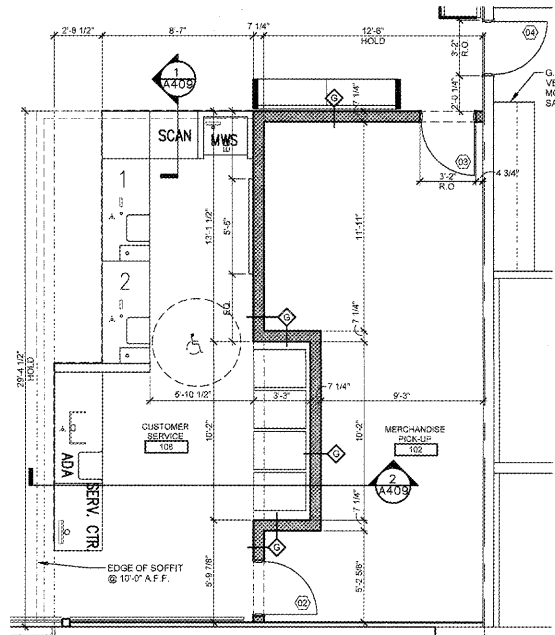


REVISIONS

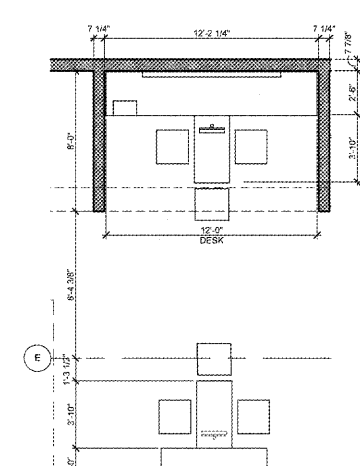
No.	Date	Description
1	01/22/18	90% OWNER REVIEW
2	01/26/18	ISSUED FOR PERMITTING



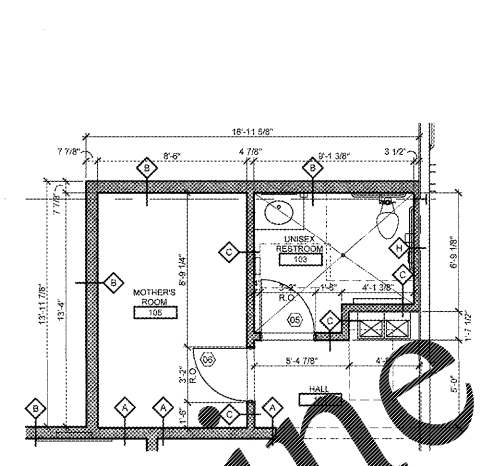
1 ENLARGED BABY REGISTRY
A401 SCALE = 1/4" = 1'-0"



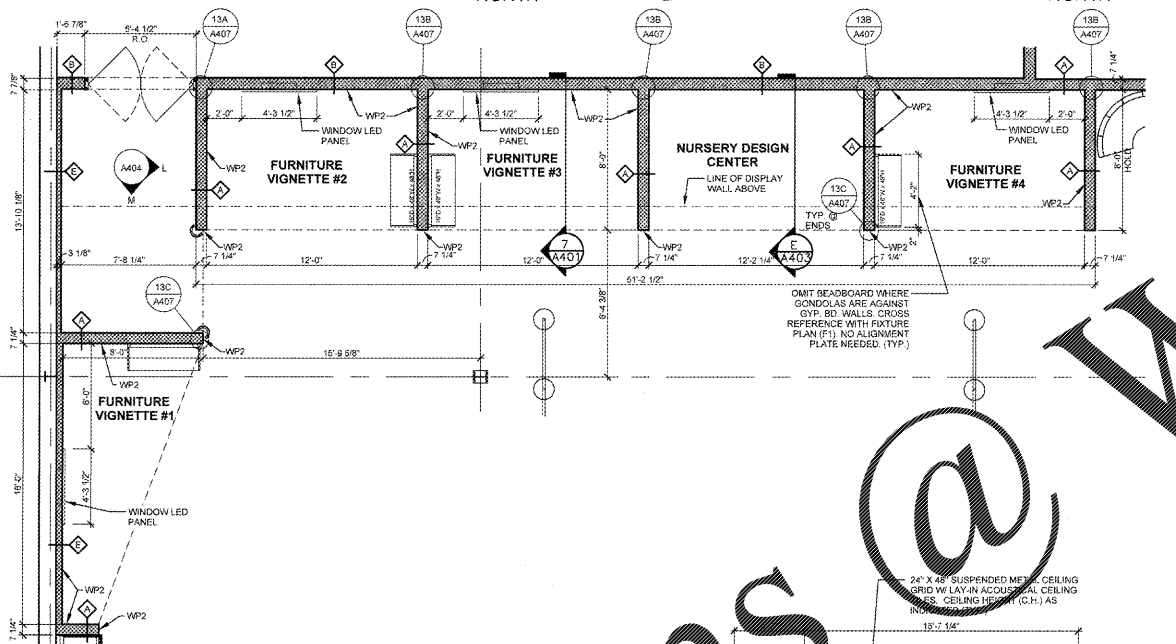
2 CUSTOMER SERVICE DESK
A401 SCALE = 1/4" = 1'-0"



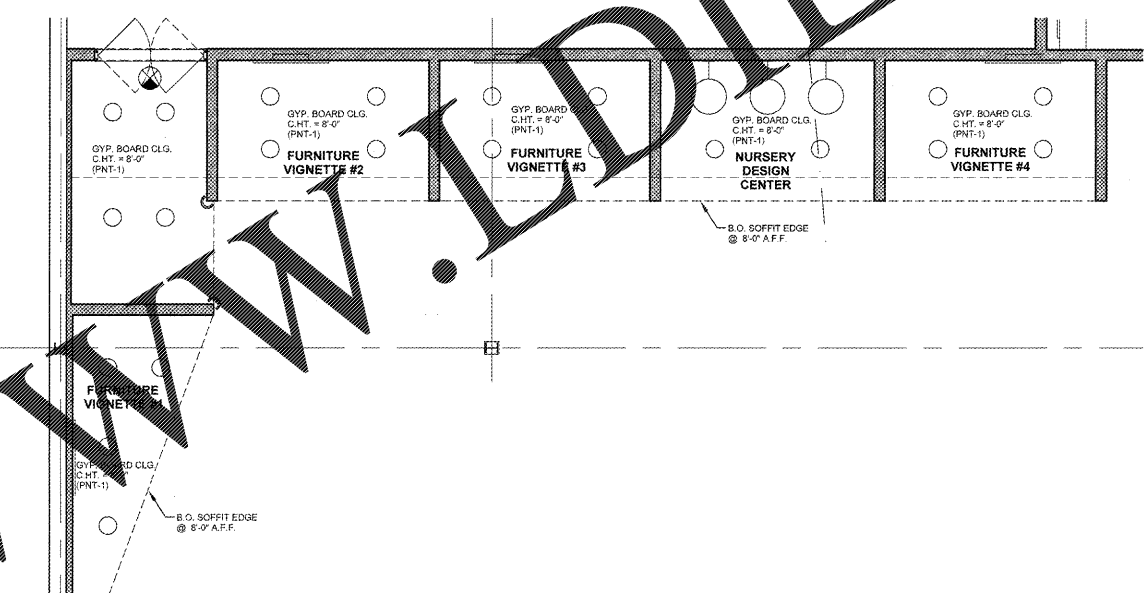
3 NURSERY DESIGN CENTER
A401 SCALE = 1/4" = 1'-0"



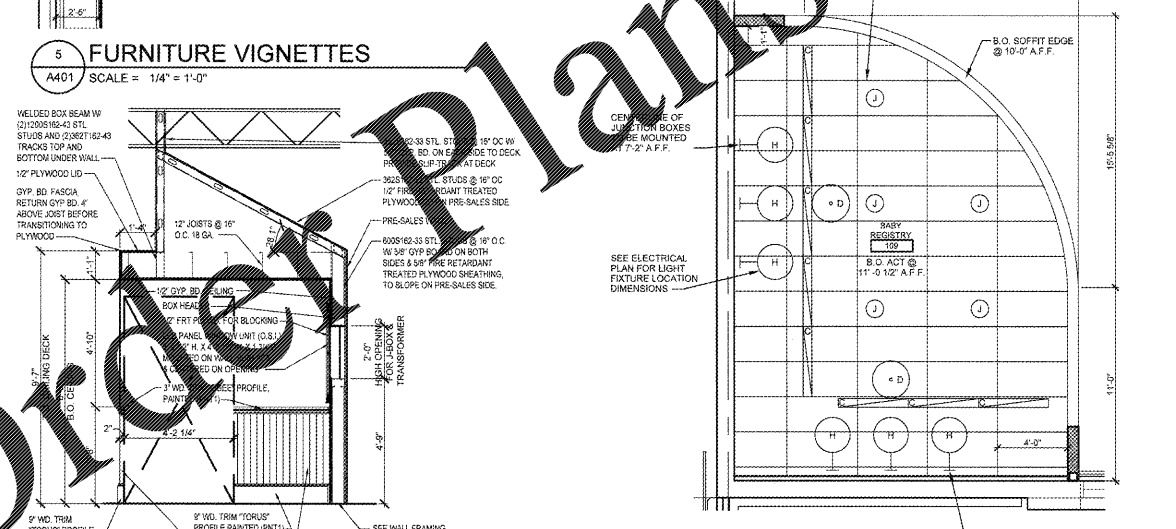
4 MOTHER'S ROOM RESTROOM
A401 SCALE = 1/4" = 1'-0"



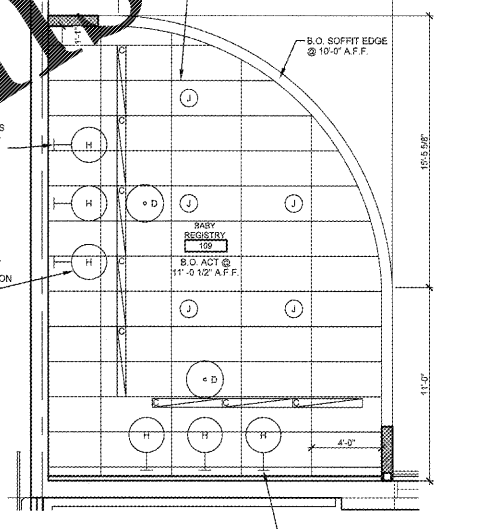
5 FURNITURE VIGNETTES
A401 SCALE = 1/4" = 1'-0"



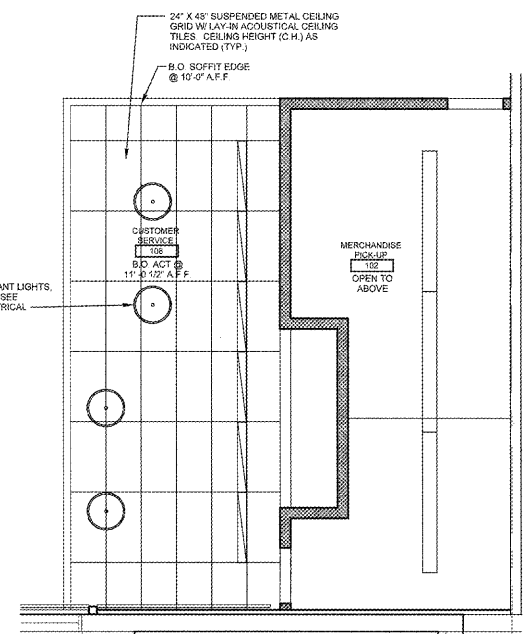
6 FURNITURE VIGNETTES RCP
A401 SCALE = 1/4" = 1'-0"



7 SECTION
A401 SCALE = 3/8" = 1'-0"



8 BABY REGISTRY DESK RCP
A401 SCALE = 1/4" = 1'-0"



9 CUSTOMER SERVICE DESK RCP
A401 SCALE = 1/4" = 1'-0"

SHOP DRAWING NOTE:
WHERE NEW MILLWORK IS TO BE PROVIDED, FABRICATION AND LAYOUT DRAWINGS FOR ALL NEW MILLWORK MUST BE SUBMITTED TO ARCHITECT FOR REVIEW AND APPROVAL PRIOR TO INSTALLATION. SHOULD MILLWORK BE INSTALLED WHICH IS NOT CONSISTENT WITH PLANS/DETAILS HEREIN, G.C. SHALL REMEDY AS NECESSARY W/O ANY ADDITIONAL COST TO OWNER.

LEGEND

SYMBOL	DESCRIPTION
[Symbol]	FOR PARTITION TYPES, SEE A401
[Symbol]	BUILDING MATERIAL CODE
[Symbol]	COLOR CODE
[Symbol]	FOR MATERIAL FINISH AND MATERIAL LIST, SEE A401

FINISH MATERIAL

- 2x4 W/O ALIGNMENT PLATE; SEE 10A400
- MELAMINE PANEL
- 3" BUMPER GUARD; (BG1)
- WAINSCOT PANEL; (WP1), REF. 3A407
- 4" VINYL BASE; SEE A401 FOR COLOR
- CONC. BLOCK WALL PAINT
- EXIST. ROOF STRUCTURE PAINT
- HOLLOW WALL DOOR & FRAME PAINT
- FIXTURES SUPPLIED BY TRU
- AUTOMATIC ALUMINUM SLIDING DOOR FINISH: WHITE
- FLOOR MOUNTED CART BUMPER
- ALUMINUM & GLASS STONEFRONT SYSTEM; FINISH: WHITE
- 2" x 2" STAINLESS STEEL CORNER GUARD @ ALL EXPOSED EDGES, MITER ALL CORNERS
- TACTILE SIGN @ 6" A.F.F. TO BOTTOM OF BRAILLE LETTERING; REF. 10A402
- STEEL STRUCTURE; WRAP w/ BRASS METAL TO MATCH CURTAIN WALL FRAMING
- GYP. BOARD PARTITION; PAINT
- CONCRETE CURB; PAINT
- 24" HIGH FLOOR MOUNTED CART STOP; SEE A103
- IMPACT DOOR S.W.H. FRAME; REF. 10A401
- CORNER GUARD (CG1)
- NOT USED
- ALUMINUM CART RAIL; SEE DETAIL 15A400
- PREPARE WALL TO RECEIVE WALL COVERING BY TRU VISUAL DEPARTMENT

COLOR

- PNT1 - SW7056 "EXTRA WHITE"
- PNT2 - 2295-05 "EVANING BLUE"

NO SUBSTITUTIONS SHALL BE ALLOWED UNLESS OTHERWISE NOTED (REFER TO SPECIFICATIONS)

DESIGNED FOR: FLORIDA BUILDING CODE, 6TH EDITION (2017).

CASCO
Architecture & Engineering
10577 WATSON ROAD
SAINT LOUIS, MO 63127
TEL: (314) 821-1100

BID DATE: 01/26/18 PROJECT NO: 918219
CAD NAME: JIMMIE DRAWN BY: JLS CHECKED BY: JMS
PROTOTYPE

CASCO PROFESSIONAL SERVICES LLC
LIC. #A48922847 EXPIRES 02/28/19
JAN 25 2018
PROFESSIONAL OF RECORD
JAMES P. SCHUBERT
LIC. #A95329 EXPIRES 02/28/19

BABIES'R'US
GLOBAL RESOURCE CENTER
ONE GEDDREY WAY
WAYNE, NJ 07470
(973) 817-3555

THIS DRAWING IS THE EXCLUSIVE PROPERTY OF TOYS 'R' US. THE INFORMATION SHOWN MAY NOT BE USED NOR THE DRAWINGS REPRODUCED WITHOUT PERMISSION OF TOYS 'R' US.

Location
LAKELAND, FLORIDA
3770 US HIGHWAY 98 NORTH 33809

Drawing Title
ENLARGED PLANS

Scale AS NOTED Date 1/29/18

Sheet No. **A401**