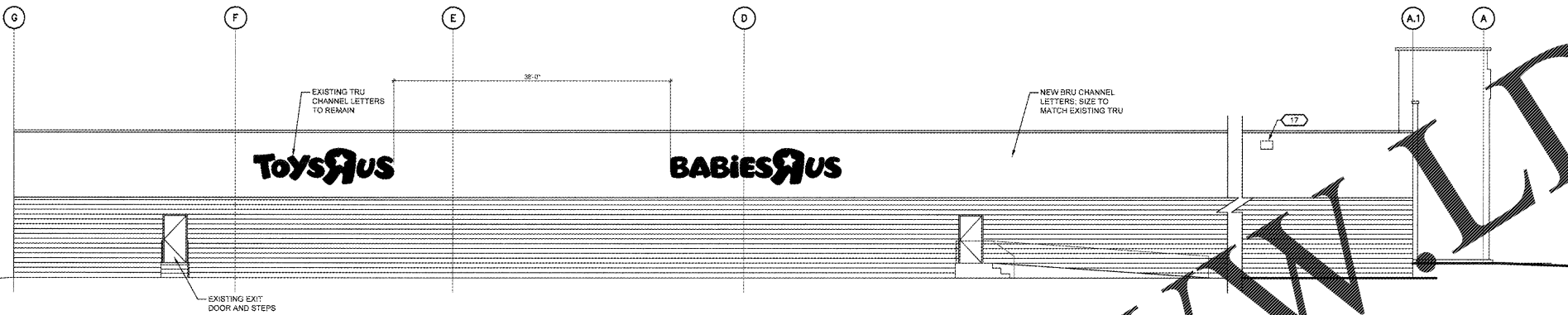
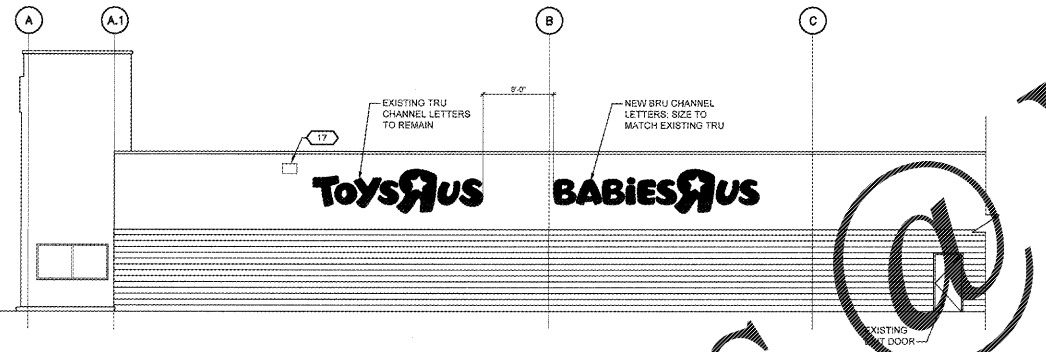


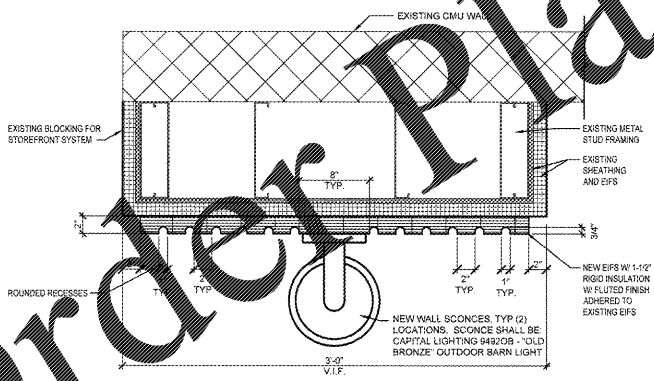
1 FRONT ELEVATION  
A201 SCALE = 1/8" = 1'-0"



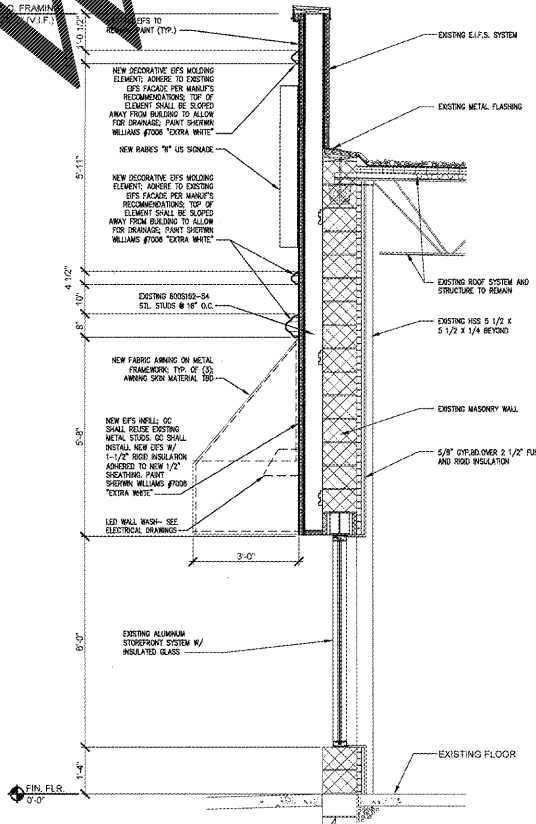
2 LEFT - SIDE ELEVATION  
A201 SCALE = 1/8" = 1'-0"



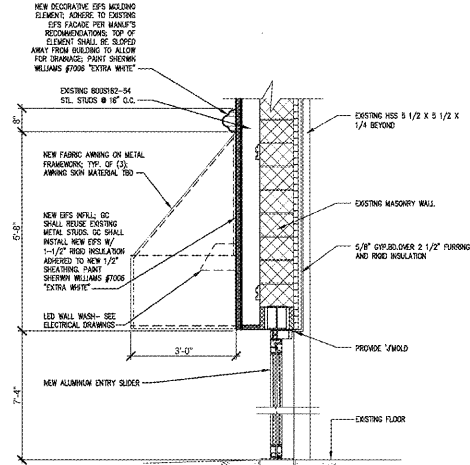
3 RIGHT - SIDE ELEVATION  
A201 SCALE = 1/8" = 1'-0"



6 FLUTED PILASTER DETAIL  
A201 SCALE = 1/2" = 1'-0"



4 STOREFRONT SECTION - TYP.  
A201 SCALE = 1/2" = 1'-0"



5 STOREFRONT SECTION @ AWNING  
A201 SCALE = 1/2" = 1'-0"

**PAINTING NOTE:**  
REFINISH EXISTING PAINTED SLIDING DOORS TO MATCH CLEAR ANODIZED FINISH. ELECTROSTATIC PAINTING AS REQUIRED BY PAINT MANUFACTURER.  
**PREPARE SURFACES AS FOLLOWS:**  
(1) ANODIZED ALUMINUM STOREFRONT - MASK OFF GLASS, GASKETING, & OTHER AFFECTED ADJACENT SURFACES.  
(2) WIRE DOWN ALL METAL SURFACES W/ MET. PREP. CLEANER AS REQUIRED BY PAINT MANUFACTURER TO REMOVE ALL DIRT, GREASE, OIL, ETC.  
(3) LIGHTLY SAND MET. SURFACES W/ 180 GRIT.  
(4) WIRE DOWN ALL METAL SURFACES A SECOND TIME W/ MET. PREP. CLEANER TO REMOVE ALL RESIDUE & AS REQUIRED TO ASSURE PROPER BONDING OF PAINT APPLICATIONS.

**PAINTING SCHEDULE:**  
**EXTERIOR SURFACES:**  
ANODIZED ALUMINUM STOREFRONT -  
(1) 1 COAT MET. PRIMER.  
- BENJAMIN MOORE ACRYLIC MET. PRIMER M04.  
- SHERWIN WILLIAMS PRO-CRYL UNIVERSAL PRIMER.  
(2) 2 COATS 100% ACRYLIC LATEX ENAMEL.  
- BENJAMIN MOORE IRON CLAD LATEX LOW LUSTER MET. ENAMEL 363.  
- SHERWIN WILLIAMS 67M ACRYLIC COATING SEMI-GLOSS.  
**INTERIOR SURFACES:**  
ANODIZED ALUMINUM STOREFRONT -  
(1) 1 COAT MET. PRIMER.  
- BENJAMIN MOORE ACRYLIC MET. PRIMER M04.  
- SHERWIN WILLIAMS PRO-CRYL UNIVERSAL PRIMER.  
(2) 2 COATS 100% ACRYLIC LATEX ENAMEL.  
- BENJAMIN MOORE IRON CLAD LATEX LOW LUSTER MET. ENAMEL 363.  
- SHERWIN WILLIAMS 67M ACRYLIC COATING SEMI-GLOSS.  
COLOR: SHERWIN WILLIAMS SW6003 "NICKEL".

**GENERAL NOTES**  
1. ONCE BUILDING SIGNS HAVE BEEN INSTALLED THERE SHALL BE NO EXPOSED BUILDING MATERIALS WHICH DENOTE/ADVERTISE (SPECIFIC) RETAILERS.

LEGEND	
CODE	DESCRIPTION
1	EXTERIOR INSULATION FINISH SYSTEM (E.I.F.S.) SANDPAPER FINISH, PAINTED. SEE SPECIFICATIONS FOR TYPE OF EPS SYSTEM(S) TO BE USED.
2	NEW CMU CHART STORAGE WALL W/ CONCRETE CURB - SEE DETAIL A/100
3	EXISTING ALUMINUM & GLASS STOREFRONT SYSTEM, PAINT WHITE FINISH, GLAZING 1" INSULATED CLEAR, LOW-E, LAMINATED SECURITY GLASS
4	AUTO ALUMINUM SLIDING ENTRY DOORS, WHITE FINISH, GLAZING 1/4" CLEAR LAMINATED SECURITY GLASS, DESIGNATED 08-21.
5	FLUTED EPS TO TERMINATE 1" FROM TOP AND BOTTOM OF NEW INSTALLATION. TYP. AT (2) LOCATIONS. SEE DETAIL B/A201
6	FLASHING TO MATCH EPS COLOR
7	BRU SCONCE WITH LED BACK LIGHTING BY SON MFR. GC TO COORDINATE SON SIZE BRU
8	ALUMINUM FRAME CANOPY WITH MATERIAL BY SON MFR. COLOR TO MATCH BRU PURPLE. TYP. AT (3) LOCATIONS
9	CONCRETE CHART CURB
10	METAL BOLLARDS BY J.R. HEE & SONS, MIDDLEBORO, KY 606-246-5593; MODEL: 150-TYP. COLOR GRAY
11	SECURITY CAMERAS
12	WOOD DOOR "300" SERIES (ALUMINUM FINISH) TYP. 1/2" OR APPROVED EQUAL - CENTER IN PORTAL. RETURN (RECESS) 1/2" MIN. 6'-0" TO 8" MIN. OF CENTER W/O.C.M. FIRE RATED.
13	6" WIDE TRAY APPLIED NUMBER 1 PREFERRED LOCAL SHOWMA W/ LOCK FIRE OFF. BACK. TYP. INTER. 1/2" MIN. MIN. TOTAL SPACING 1/2" S.F.
14	NEW DECORATIVE EPS HOLDING ELEMENTS TO ADHERE TO EXISTING EPS FACADE PER MANUFACTURER'S RECOMMENDATIONS. TOP OF ELEMENT SHALL BE SLOPED AWAY FROM BUILDING TO ALLOW FOR DRAINAGE. PAINT SHERWIN WILLIAMS #7006 "CERMA WHITE".
15	NEW DECORATIVE EPS HOLDING ELEMENTS TO ADHERE TO EXISTING EPS FACADE PER MANUFACTURER'S RECOMMENDATIONS. TOP OF ELEMENT SHALL BE SLOPED AWAY FROM BUILDING TO ALLOW FOR DRAINAGE. PAINT SHERWIN WILLIAMS #7006 "CERMA WHITE".
16	NEW WALL SCONCES TYP. (2) LOCATIONS. SCONCE SHALL BE CAPITAL LIGHTING SCONCE - OLD BRONZE/ OUTDOOR BARN LIGHT
17	NEW BRU CHANNEL LETTERS, SIZE TO MATCH EXISTING TRU

REVISIONS		
No.	Date	Description
01	02/21/18	50% OWNER REVIEW
02	01/29/18	ISSUED FOR PERMIT/BD

NO SUBSTITUTIONS SHALL BE ALLOWED UNLESS OTHERWISE NOTED (REFER TO SPECIFICATIONS)

DESIGNED FOR: FLORENCE BUILDING CODE, 6TH EDITION (2017).

**CASCO**  
Architecture & Engineering  
10877 WATSON ROAD  
SAINT LOUIS, MO 63127  
TEL: (314) 821-1100

BID DATE: 01/29/18 PROJECT NO: 918219  
CAD NAME: JHE/2018 CHECKED BY: JHE  
DRAWN BY: JHE  
PROTOTYPE

CASCO PROFESSIONAL SERVICES LLC  
L.C. #A062072402 EXPIRES: 02/28/19  
1/28/18 2:08 PM  
PROFESSIONAL SEAL  
JAMES A. BISHOP  
L.C. #A063208 EXPIRES: 02/28/19

**BABIES R US**  
GLOBAL RESOURCE CENTER  
ONE GEOFFREY WAY  
WAYNE, NJ 07470  
(973) 617-3500

THIS DRAWING IS THE EXCLUSIVE PROPERTY OF TOYS 'R' US. THE INFORMATION SHOWN MAY NOT BE USED NOR THE DRAWINGS REPRODUCED WITHOUT PERMISSION OF TOYS 'R' US.

Location  
LAKELAND, FLORIDA  
3770 US HIGHWAY 98 NORTH 33609

Drawing Title  
EXTERIOR ELEVATIONS

Scale AS NOTED Date 1/29/18

Sheet No. A201

Order Plans

WWW.LDILLING.COM