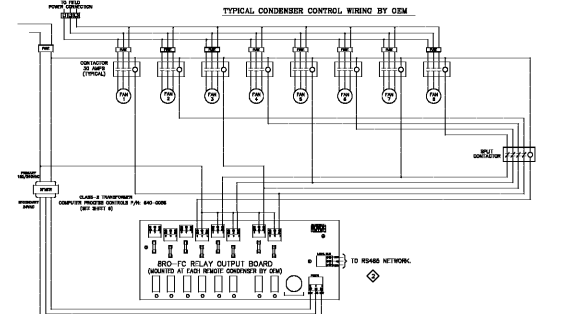


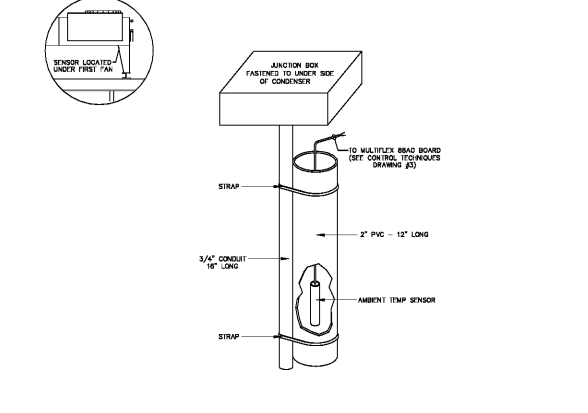
NOTES:
 1. CONTRACTOR TO PROVIDE 3/4" CONDUIT FOR REFRIG. RACK POWER & RS485 LOCAL BUS COMMUNICATION CABLE FROM FACTORY RACK CONTROLLER TO ASSOCIATED REMOTE CONDENSER.
 2. CONTRACTOR TO INSTALL AND TERMINATE RS485 NETWORK. RS485 NETWORK SHALL BE EASY CHANGED AND TERMINATED AT BOTH ENDS OF NETWORK.

1 EINSTEIN CONTROL SYSTEM -- REFRIG. RACK POWER & RS485 LOCAL BUS WIRING SCALE: NONE

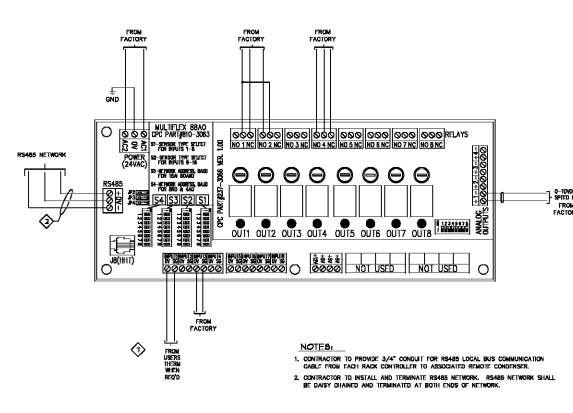


NOTES:
 1. CONTRACTOR TO PROVIDE 3/4" CONDUIT FOR REFRIG. LOCAL BUS COMMUNICATION CABLE FROM FACTORY RACK CONTROLLER TO ASSOCIATED REMOTE CONDENSER.
 2. CONTRACTOR TO INSTALL AND TERMINATE RS485 NETWORK. RS485 NETWORK SHALL BE EASY CHANGED AND TERMINATED AT BOTH ENDS OF NETWORK.

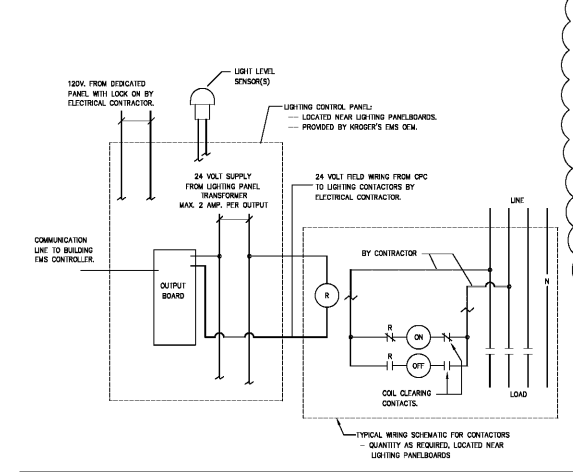
2 EINSTEIN CONTROL SYSTEM -- CONDENSER CONTROL TERMINATION SCALE: NONE



3 AMBIENT TEMPERATURE SENSOR DETAIL SCALE: NONE



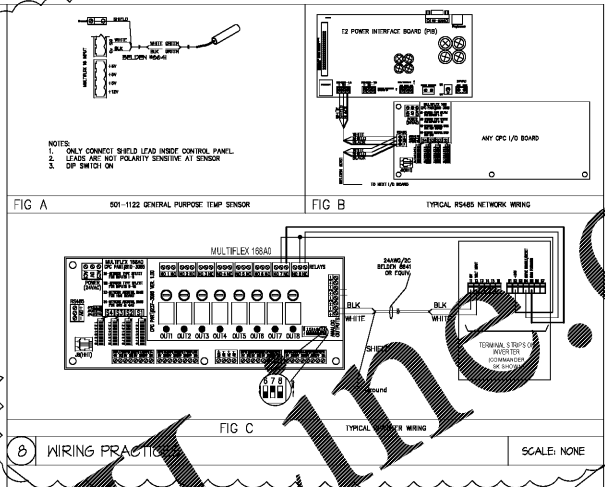
4 TYPICAL 88A0 WIRING AT VSD BYPASS PANEL - INSTALLED BY OEM SCALE: NONE



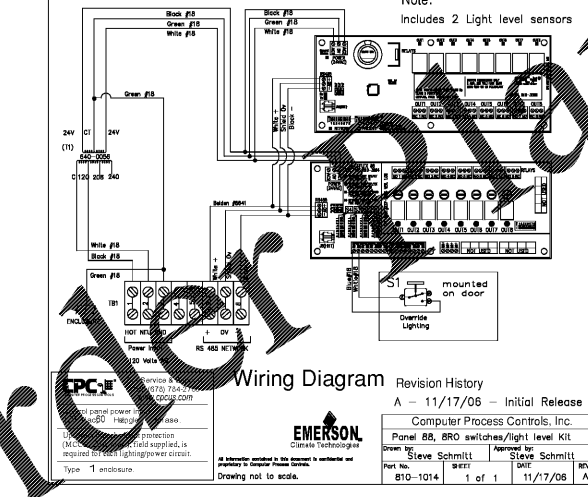
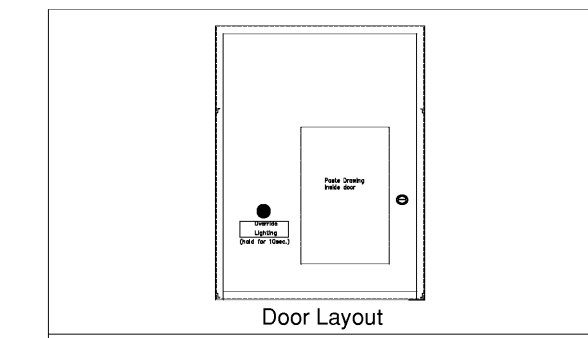
NOTES:
 - BUILDING CONTROLLER CONTROLS LIGHTING LOADS, MAX I/O BOARD LOCATED IN THE LIGHTING CONTROL PANEL.
 - BUILDING CONTROLLER INPUTS:
 + OUTDOOR LIGHTING LEVEL SENSOR
 + INDOOR LIGHT LEVEL SENSOR (FOR SKYLIGHT STORES)
 - SET KROGER LIGHTING TEMPLATES FOR RECOMMENDED CONTROL LOADS.

CONTROL DEVICES:
 - TWO WIRE CONTROL RELAY OPTION FURNISHED WITH MECHANICALLY HELD CONTACTOR, BY KROGER'S SWITCHGEAR PROVIDER.
 - BUILDING CONTROLLER, LIGHTING PANEL, PHOTO SENSORS, CONTACTORS AND RELAYS ARE FURNISHED BY KROGER.

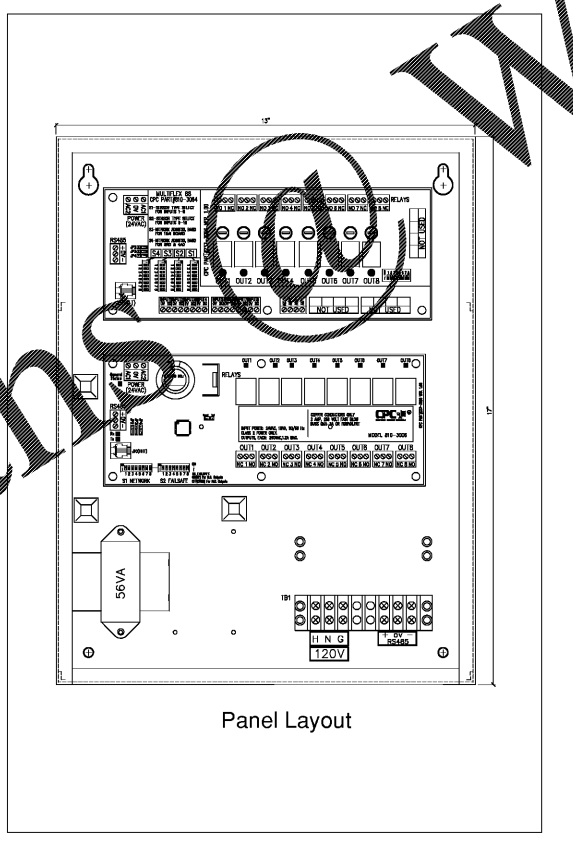
5 EINSTEIN CONTROL SYSTEM -- MF88 LIGHTING CONTROL SCALE: NONE



6 WIRING PRACTICES SCALE: NONE



6 PANEL 88, 880 SWITCHES/LIGHT LEVEL KIT SCALE: NONE



7 PANEL 88, 880 SWITCHES/LIGHT LEVEL KIT SCALE: NONE



NEW STORE
 CONTROLS
 INSTALLATION TEMPLATE

CURRENT PLAN DATE:	03/01/08
ORIGINAL PLAN DATE:	3/31/08
DRAWN BY:	CS
CHECKED BY:	CS
REVISION:	
1	CIS
2	CIS
3	CIS

ENERGY MANAGEMENT
 CPC DETAILS

EM-5
 CON-161-TEMP-ENL2WG

ATTENTION DESIGN ENGINEERS:
 THIS VENDOR SUPPLIED DRAWING IS PROVIDED FOR REFERENCE ONLY, AND MAY SHOW COMPONENTS THAT ARE NOT USED IN ALL STORES.