

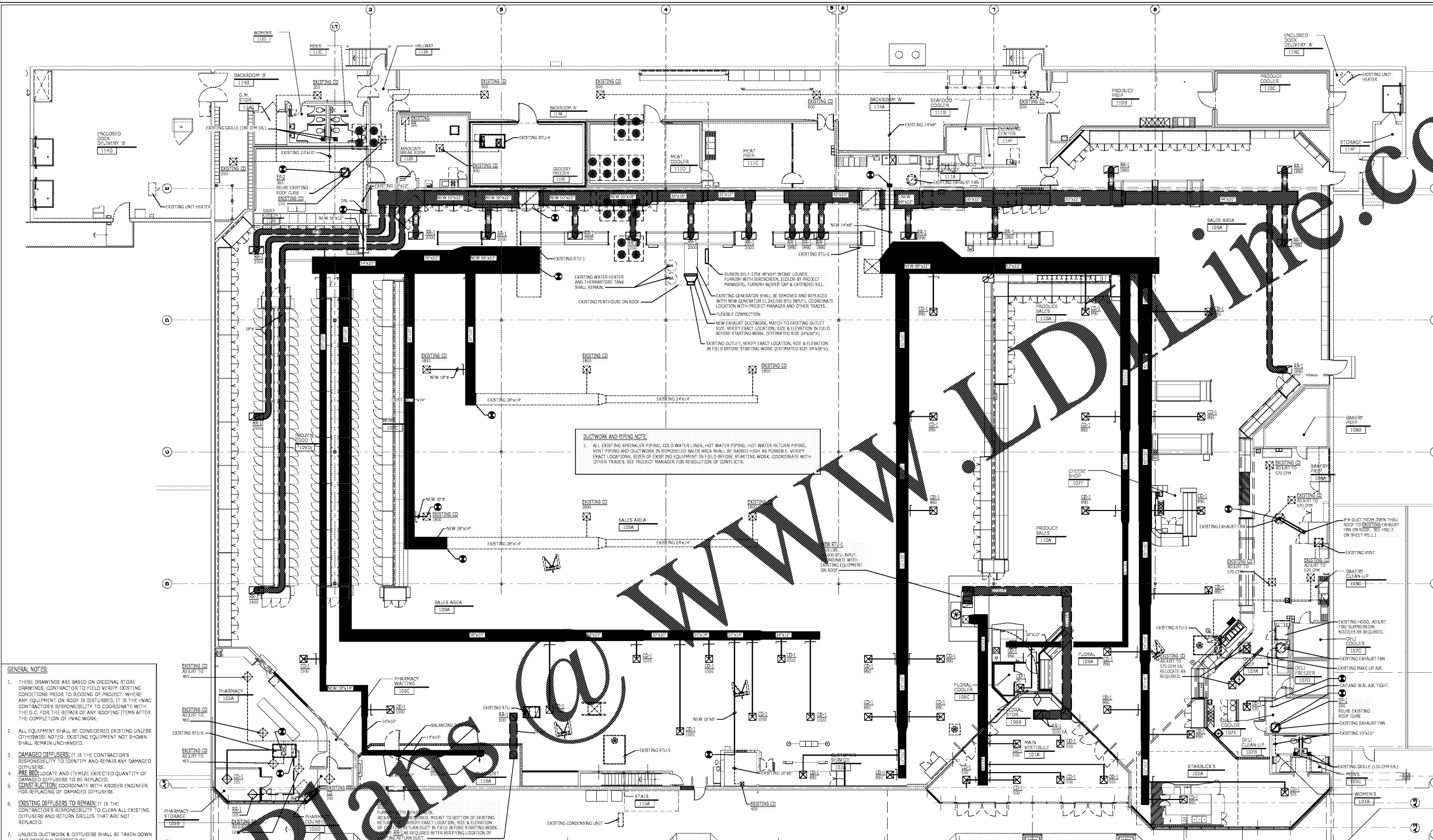
NO.	REVISIONS

A With-in-the-Walls Remodel for:
KROGER STORE #GA-414
4355 WASHINGTON ROAD, EVANS, GEORGIA 30809

H V A C F L O O R P L A N

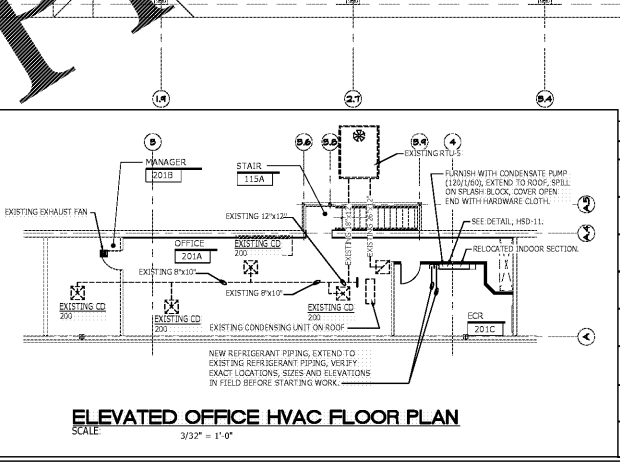
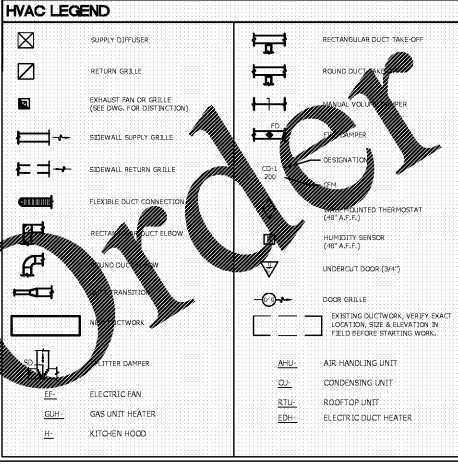
COPYRIGHT
THIS PROJECT IS A RENOVATION OF AN EXISTING FACILITY AND, IF NECESSARY, PREVIOUS RECORD DRAWINGS DATED 1992, 2001, 2008 FORM THE BASIS FOR MANY OF THESE DRAWINGS. IT IS THEREFORE EVEN MORE IMPORTANT THAN IN NEW CONSTRUCTION THAT ALL DIMENSIONS SHALL BE FIELD VERIFIED BEFORE FABRICATION OR INSTALLATION OF DIMENSION CRITICAL EQUIPMENT, MATERIALS, AND ASSEMBLIES. THERE MAY BE FIELD CONDITIONS NOT ACCESSIBLE DURING DESIGN WHICH DIFFER FROM THOSE SHOWN ON THE DRAWINGS. ANY SUCH CONDITIONS SHALL BE BROUGHT TO THE ATTENTION OF THE ARCHITECT AND KROGER PROJECT MANAGER FOR RESOLUTION BEFORE PROCEEDING WITH ANY CONSTRUCTION, FABRICATION, OR MATERIAL/EQUIPMENT PURCHASES WHICH WOULD BE UNUSABLE UNDER THOSE CIRCUMSTANCES.

ISSUE DATE: JANUARY 29, 2017
PROJECT NO: 217156
SHEET NUMBER: M 1.1



DUCTWORK AND PIPING NOTE:
1. ALL EXISTING SPRINKLER PIPING, COOL WATER LINES, HOT WATER PIPING, HOT WATER RETURN PIPING, VENT PIPING AND DUCTWORK IN REMODELED SALES AREA SHALL BE RAISED HIGH AS POSSIBLE. VERIFY EXACT LOCATIONS, SIZES OF EXISTING EQUIPMENT IN FIELD BEFORE STARTING WORK. COORDINATE WITH OTHER TRADES. SEE PROJECT MANAGER FOR RESOLUTION OF CONFLICTS.

- GENERAL NOTES:**
- THESE DRAWINGS ARE BASED ON ORIGINAL STORE DRAWINGS. CONTRACTOR TO FIELD VERIFY EXISTING CONDITIONS PRIOR TO BIDDING OF PROJECT. WHERE ANY EQUIPMENT ON ROOF IS DISTURBED, IT IS THE HVAC CONTRACTOR'S RESPONSIBILITY TO COORDINATE WITH THE G.C. FOR THE REPAIR OF ANY ROOFING ITEMS AFTER THE COMPLETION OF HVAC WORK.
 - ALL EQUIPMENT SHALL BE CONSIDERED EXISTING UNLESS OTHERWISE NOTED. EXISTING EQUIPMENT NOT SHOWN SHALL REMAIN UNCHANGED.
 - DAMAGED DIFFUSERS:** IT IS THE CONTRACTOR'S RESPONSIBILITY TO IDENTIFY AND REPAIR ANY DAMAGED DIFFUSERS.
 - PRE-BID:** LOCATE AND ITEMIZE EXPECTED QUANTITY OF DAMAGED DIFFUSERS TO BE REPLACED.
 - CONSTRUCTION:** COORDINATE WITH KROGER ENGINEER FOR REPLACING OF DAMAGED DIFFUSERS.
 - EXISTING DIFFUSERS TO REMAIN:** IT IS THE CONTRACTOR'S RESPONSIBILITY TO CLEAN ALL EXISTING DIFFUSERS AND RETURN GRILLES THAT ARE NOT REPLACED.
 - UNUSED DUCTWORK & DIFFUSERS SHALL BE TAKEN DOWN AND PROPERLY DISPOSED OF.



CEILING DIFFUSER/RETURN/EXHAUST GRILLE SELECTION SCHEDULE

SERVICE	SUPPLY	RETURN	EXHAUST
QFM	NECK DIAMETER INCH	BRANCH DUCT SIZE (DIA INCH)	FACE SIZE IN. X IN.
0 - 100	6	6	24 x 24 12 x 12
101 - 200	8	8	24 x 24 12 x 12
201 - 380	10	10	24 x 24 12 x 12
381 - 600	12	12	24 x 24 12 x 12
601 - 900	14	14	24 x 24 12 x 12
901 - 1300	16	16	24 x 24 16 x 16
1301 - 2100	18 x 18	18 x 18	24 x 24 24 x 24

DUCTWORK LEGEND:
 NEW DUCTWORK
 EXISTING DUCTWORK
 EXIST. DUCTWORK TO BE REMOVED.

DUCTWORK NOTES:
 1. H.V.A.C. WORK SHOWN ON THIS PLAN SHALL BE REMOVED UNLESS NOTED OTHERWISE.
 2. REMOVE AS FIELD CONDITIONS WARRANT ALL EXISTING H.V.A.C. AS REQUIRED. CONFIRM WITH PROJECT MANAGER BEFORE REMOVAL. DISPOSE OF ALL MATERIAL REMOVED AND NOT REUSED AS DIRECTED BY THE OWNER.
 3. EXISTING MATERIALS REMOVED MAY BE REUSED WHERE PRACTICAL, IF PRIOR APPROVAL IS OBTAINED FROM THE ARCHITECT AND PROJECT MANAGER.

POINT OF CONNECTION
 POINT OF CONNECTION FOR NEW PIPING. CONNECT NEW PIPING TO EXISTING PIPING. VERIFY EXACT SIZE, LOCATION & INVERT IN FIELD BEFORE STARTING WORK.

NOTE
SEE SHEET MD.1 FOR DEMOLITION PLAN.

JGC
John G. Coyle
Consulting Engineer
225 BRIDLE LANE, SUITE 101
BOWLING GREEN, TENNESSEE 37026
PHONE: (615) 588-5248 FAX: (615) 247-0210