

**PLUMBING KEY NOTES**

- 1 WATER HEATER (OPTIONAL): 3/4" CW SOFTENED IN & 3/4" HW OUT
- 2 WATER HEATER (OPTIONAL) AS SPECIFIED AND IN COMPLIANCE WITH APPLICABLE CODES AND ORDINANCES. CONTRACTOR TO ENSURE DIMENSIONS OF THE HEATER ALLOW INSTALLATION BELOW COUNTER. REFER TO WATER HEATER PIPING DIAGRAM.
- 3 UTENSIL SINK FAUCET: 3/4" HW & CW IN. REDUCE PIPING AT UNIT.
- 4 REVERSE OSMOSIS UNIT: 3/8" SOFTENED & FILTERED CW WATER TO: 3/8" R.O. FROM. REDUCE PIPING AT UNIT. PLUMBING CONTRACTOR TO FOLLOW MANUFACTURER'S INSTALLATION INSTRUCTIONS AND ACTIVATION PROCEDURES FOR UNIT. INSTALL ASSEMBLY ON WALL.
- 5 3-COMPARTMENT SINK: 3/4" HW & CW TO FAUCET & SPRAY. CAULK AND SEAL BACK OF SINK TO WALL.
- 6 ICE MACHINE: 3/8" SOFTENED CW WATER TO UNIT. REDUCE PIPING AT UNIT. VERIFY REQUIRED SERVICE REQUIRED ON SIGHTING.
- 7 HANDSINK: 3/4" HW & CW IN.
- 8 COFFEE BREWER: 3/8" HW WATER TO UNIT(S). INSTALL SHUT-OFF IN CABINET @24" AP. VERIFY WATER SERVICE REQUIRED CONDITIONING (RO/FILTERED/SOFT) WITH FILTER MANUFACTURER.
- 9 ESPRESSO MACHINE: 3/8" R.O. WATER TO UNIT. CONNECT 3/8" BRAIDED STAINLESS STEEL HOSE FROM SHUT-OFF TO ESPRESSO MACHINE WATER INLET. VERIFY REQUIRED CONDITIONING (RO/FILTERED/SOFT) WITH FILTER MANUFACTURER.
- 10 WATER SOFTENER: 1/2" CW WATER TO UNIT, 3/8" SOFTENED CW OUT. REDUCE PIPING AT UNIT. PIPE UNIT AND SALT TANK PER MANUFACTURER RECOMMENDATIONS.
- 11 HOT TAP: 3/8" SOFT FILTERED CW WATER TO UNIT. REDUCE PIPING AT UNIT. VERIFY REQUIRED CONDITIONING (RO/FILTERED/SOFT) WITH FILTER MANUFACTURER.
- 12 WATER TOWER FAUCET: 3/8" SOFT FILTERED CW WATER TO UNIT. REDUCE PIPING AT UNIT. VERIFY REQUIRED CONDITIONING (RO/FILTERED/SOFT) WITH FILTER MANUFACTURER.
- 13 METERING FAUCET: 3/4" CW WATER TO UNIT. REDUCE PIPING AT UNIT.
- 14 PREFILTER & FINAL FILTER (QUAD): 3/8" SOFT FILTERED CW WATER TO PREFILTER, THEN ON TO FINAL FILTERS. PIPE BOTH UNITS WITH A BYPASS FOR FILTER CHANGE OUT. REDUCE PIPING AT UNITS.
- 15 PRESSURE REGULATOR: FURNISH AND INSTALL IF PRESSURE EXCEEDS 65 PSI WITHIN STARBUCKS SPACE.
- 16 VERIFY WITH LOCAL INSPECTOR (AHJ) IF BACKFLOW PREVENTERS ARE REQUIRED FOR EQUIPMENT & MAIN WATER SERVICE TO KIOSK, BEFORE BID. REQUIRED BACKFLOW PREVENTERS SHALL BE FURNISHED, INSTALLED, & INSPECTED PER CODE & AHJ (NOT NECESSARILY SHOWN).
- 17 CONFIRM PIPING CONNECTIONS TO ALL WATER TREATMENT SYSTEMS (LAURENCE.PINKERTON@PENTAIR.COM, CONTACT@ 310-292-9080)
- 18 PROVIDE THREADED FITTINGS AND UNIONS SO BYPASS PIPING AND EQUIPMENT CAN BE REMOVED IN THE FUTURE FOR REPAIR.
- 19 RUN ALL PIPING CONCEALED (TYP).

**SHORT LEFT HAND BASE - PLUMBING SUPPLY PLAN**

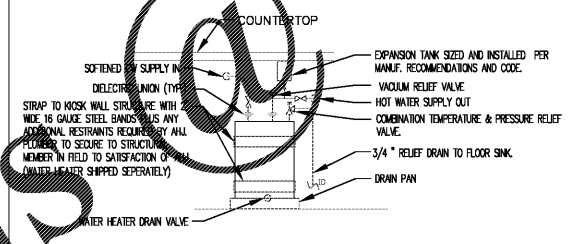
**PLUMBING GENERAL NOTES**

- A F&I A COMPLETE AND OPERATING SYSTEM. ALL ITEMS ARE NOT NECESSARILY SHOWN.
- B PLUMBING CONTRACTOR RESPONSIBLE FOR SITE INVESTIGATION PRIOR TO START OF WORK TO REVEAL FULL SCOPE OF WORK.
- C COORDINATE WITH ELECTRICAL CONTRACTOR FOR POWER CONNECTION TO ALL PLUMBING EQUIPMENT.
- D DIMENSIONS ARE TO FINISH FACE UNLESS OTHERWISE NOTED.
- E REFER TO DETAIL SHEETS FOR PLUMBING FITTINGS LOCATED IN CASEWORK.
- F COLD WATER SUPPLY LINES INSIDE CASEWORK & BAR AREA TO BE COVERED WITH 1/2" THICK SELF SEALING, SECTIONAL CLOSED-CELL FOAM INSULATION. REFER TO SPECIFICATIONS FOR HOT WATER SUPPLY LINE INSULATION REQUIREMENTS.
- G CONTRACTOR SHALL CONTACT WATER FILTER SUPPLIER 10 DAYS (MINIMUM) BEFORE THE TIME THAT THE FILTER SYSTEM IS TO BE STARTED UP.
- H STOP VALVES SHALL BE F&I AT ALL PLUMBING FIXTURES EVEN IF NOT SHOWN IN PLAN.
- I RUN ALL PIPING CONCEALED.

**ABBREVIATIONS**

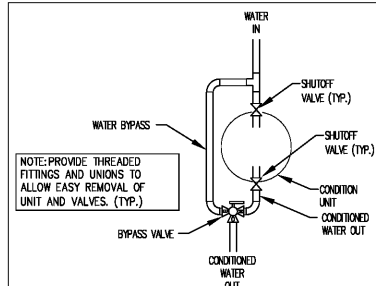
AHJ AUTHORITIES HAVING JURISDICTION.  
F & I FURNISH & INSTALL  
UNO UNLESS NOTED OTHERWISE  
NNU NUMBER NOT USED

**NOTE:**  
ALL PLUMBING MUST BE DONE IN ACCORDANCE WITH LOCAL CODES.



1 WATER HEATER PIPING DIAGRAM

NTS NOTE: SCHEMATIC - ADAPT AS NEEDED FOR EXACT SITUATION.  
NOTE: WATER HEATER IS OPTIONAL



2 BYPASS PIPING DIAGRAM

NTS

ALL INFORMATION CONTAINED IN OR DISCLOSED BY THIS DOCUMENT IS CONSIDERED CONFIDENTIAL AND PROPRIETARY BY LOAD KING MFG. COMPANY. ALL DESIGN, MANUFACTURING, USE, REPRODUCTION, AND ALL SALES RIGHTS, ARE EXPRESSLY RESERVED BY AND TO LOAD KING MFG. COMPANY AND COMMUNICATION OF THIS INFORMATION TO OTHERS IS PROHIBITED WITHOUT THE PRIOR WRITTEN CONSENT OF LOAD KING MFG. COMPANY.

E.C.N. NO.	REVISION	DATE:	BY:

PROPRIETARY INFORMATION DO NOT DUPLICATE ALL RIGHTS RESERVED DIMENSIONS ARE IN INCHES TOLERANCES UNLESS NOTED  
FRAC. TOL. ± 1/32  
DEC. TOL. ± .01  
ANGULAR TOL. ± .5'  
DO NOT SCALE DRAWING

**PLK INDUSTRIES** 1357 WEST BEAVER STREET P.O. BOX 40606 JACKSONVILLE, FL 32203-0606 DIVISION OF LOAD KING MFG.

PLUMBING SUPPLY, LH, SHORT, CUSTOM, V3

SIZE: B DRN. BY: AC DATE: 11/05/15 SCALE: 1/2"=1'

PART NO. SBX-902-501-0000-A  
SHT: 1 of 3 REV. 0  
DOCUMENT NO. SBX-902-501-0000-A

REFERENCE ONLY, SEE SHEET P1.2 FOR SCOPE OF WORK

A With-in-the-Walls Remodel for:  
**KROGER STORE #GA-414**  
4355 WASHINGTON ROAD, EVANS, GEORGIA 30809

**STARBUCKS WATER PLAN**

**COPYRIGHT**  
ALL DRAWINGS, SPECIFICATIONS AND OTHER INFORMATION CONTAINED HEREIN ARE THE PROPERTY OF JGC CONSULTING ENGINEER, INC. AND SHALL REMAIN THE PROPERTY OF JGC CONSULTING ENGINEER, INC. ANY REPRODUCTION OR TRANSMISSION OF THIS DOCUMENT WITHOUT THE WRITTEN PERMISSION OF JGC CONSULTING ENGINEER, INC. IS PROHIBITED.  
**COPYRIGHT**

ISSUE DATE: JANUARY 29, 2017  
PROJECT NO: 217156  
SHEET NUMBER: P 1.2.1

**JGC**  
Jon G. Cray  
Consulting Engineer

201 SHILAKE LANE, SUITE 111  
EVANS, GEORGIA 30809  
PHONE: (800) 588-5246  
FAX: (800) 247-0270  
EMAIL: JGC@JGC-ENGINEER.COM

Order Plans