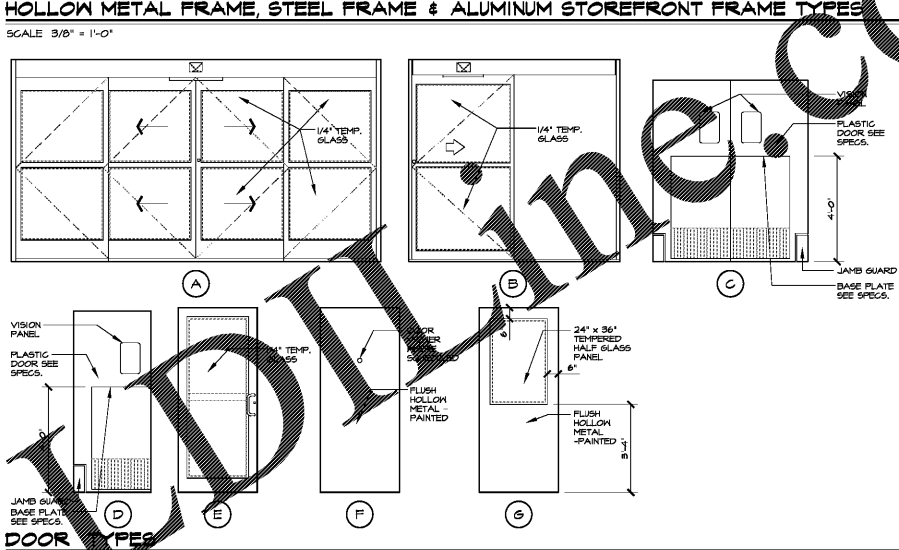
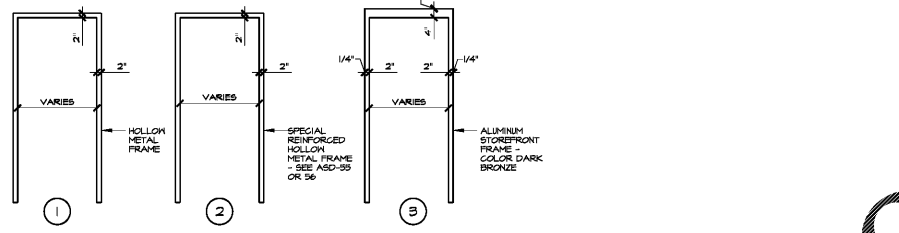


DOOR & FRAME SCHEDULE

DOOR NO.	DOOR LEAF					FRAME			FIRE LABEL	DETAILS			REMARKS	HARDWARE SETS	DOOR NO.	LOCATION		
	DOOR SIZE	THICK	MATERIAL	TYPE	LOUVER	FINISH	MATERIAL	TYPE		HEAD	JAMB	SILL				FROM	TO	
101	14'-0" 1/2" W x 7'-0" H		ALUM. & GLASS	A		BY MANUF.	BY MANUF.						SEE MANUF. DWGS.	SEE NOTE: 2, 3 & 4	#007	101	EXTERIOR	RM. #101A
102	14'-0" 1/2" W x 7'-0" H		ALUM. & GLASS	A		BY MANUF.	BY MANUF.						SEE MANUF. DWGS.	SEE NOTE: 2, 3 & 4	#007	102	EXTERIOR	RM. #101A
103	14'-0" 1/2" W x 7'-0" H		ALUM. & GLASS	A		BY MANUF.	BY MANUF.						SEE MANUF. DWGS.	SEE NOTE: 2, 3 & 4	#007	103	RM. #101A	RM. #101B
104	14'-0" 1/2" W x 7'-0" H		ALUM. & GLASS	A		BY MANUF.	BY MANUF.						SEE MANUF. DWGS.	SEE NOTE: 2, 3 & 4	#007	104	RM. #101A	RM. #101B
105	9'-0" 1/2" W x 7'-0" H		ALUM. & GLASS	B		BY MANUF.	BY MANUF.		I/AS1	J-1			SEE NOTE: 2, 3 & 5	#007	105	EXTERIOR	RM. #101A	
111	3'-0" W x 7'-0" H		PLASTIC	D		BY MANUF.	HOLLOW METAL - SEE ASD-56	2	H-1	J-1			SEE NOTE: 6, 7 & 8	#017	111	RM. #101A	RM. #101A	
112	(2) 2'-6" W x 9'-0" H		PLASTIC	C		BY MANUF.	HOLLOW METAL - SEE ASD-56	2	H-2	J-2			SEE NOTE: 6, 7 & 8	#017	112	RM. #101A	RM. #101A	
E113	(2) 3'-0" W x 9'-0" H		EXISTING - PLASTIC				EXISTING - METAL		EXIST.	E113			EXISTING TO REMAIN, SEE NOTE: 13	EXIST.	E113	RM. #101A	RM. #101B	
E114	3'-0" W x 7'-0" H		EXISTING - PLASTIC				EXISTING - METAL		EXIST.	E114			EXISTING TO REMAIN, SEE NOTE: 13	EXIST.	E114	RM. #101A	RM. #101A	
E115	(2) 2'-3" W x 7'-0" H		PLASTIC	C			EXISTING - METAL		EXIST.	E115			SEE NOTE: 6, 7, 9 & 10	#017	115	RM. #101A	RM. #101A	
E116	3'-0" W x 7'-0" H		PLASTIC	D		BY MANUF.	HOLLOW METAL - SEE ASD-56		H-4	J-5			SEE NOTE: 6, 7 & 8	#017	116	RM. #101A	RM. #101C	
E117	(2) 3'-0" W x 7'-0" H		EXISTING - PLASTIC				EXISTING - METAL		EXIST.	E117			EXISTING TO REMAIN, SEE NOTE: 13	EXIST.	E117	RM. #101A	RM. #101A	
E118	(2) 3'-0" W x 7'-0" H		EXISTING - PLASTIC				EXISTING - METAL		EXIST.	E118			EXISTING TO REMAIN, SEE NOTE: 13	EXIST.	E118	RM. #101B	RM. #101A	
E119	(2) 4'-0" W x 9'-0" H		EXISTING - PLASTIC				EXISTING - METAL		EXIST.	E119			EXISTING TO REMAIN, SEE NOTE: 13	EXIST.	E119	RM. #101D	EXTERIOR	
E120	4'-0" W x 8'-0" H		PLASTIC	D		BY MANUF.	HOLLOW METAL - SEE ASD-56	2	H-5	J-5			SEE NOTE: 6, 7 & 8	#017	120	RM. #101A	RM. #101A	
E130	8'-0" W x 8'-0" H		EXISTING - STEEL				EXISTING - BENT STEEL PLATE		EXIST.	E130			EXISTING TO REMAIN, SEE NOTE: 13	EXIST.	E130	RM. #101F	EXTERIOR	
E131	8'-0" W x 8'-0" H		EXISTING - STEEL				EXISTING - BENT STEEL PLATE		EXIST.	E131			EXISTING TO REMAIN, SEE NOTE: 13	EXIST.	E131	RM. #101D	EXTERIOR	
E132	8'-0" W x 8'-0" H		EXISTING - STEEL				EXISTING - BENT STEEL PLATE		EXIST.	E132			EXISTING TO REMAIN, SEE NOTE: 13	EXIST.	E132	RM. #101D	EXTERIOR	
E140	SEE PLAN x 8'-0" H		EXIST. - ALUMINUM				EXISTING - ALUMINUM		EXIST.	E140			EXISTING TO REMAIN, SEE NOTE: 13	EXIST.	E140	RM. #000	RM. #000	
E141	SEE PLAN x 4'-0" H		EXIST. - ALUMINUM				EXISTING - ALUMINUM		EXIST.	E141			EXISTING TO REMAIN, SEE NOTE: 13	EXIST.	E141	RM. #000	RM. #000	
142	3'-0" W x 7'-0" H		ALUM. & GLASS	E		BY MANUF.	ALUMINUM	3	H-6	J-6			SEE NOTE: 2, 3, 15 & 17	#008B	142	RM. #101B	EXTERIOR	
E151	3'-0" W x 6'-8" H		EXIST. - HOLLOW METAL				EXISTING - HOLLOW METAL		EXIST.	E151			EXISTING TO REMAIN, SEE NOTE: 1	EXIST.	E151	RM. #101G	RM. #101B	
E152	3'-0" W x 6'-8" H		EXIST. - HOLLOW METAL				EXISTING - HOLLOW METAL		EXIST.	E152			EXISTING TO REMAIN, SEE NOTE: 1	EXIST.	E152	RM. #101B	RM. #101B	
E153	4'-0" W x 7'-0" H		EXIST. - HOLLOW METAL				EXISTING - HOLLOW METAL		EXIST.	E153			EXISTING TO REMAIN, SEE NOTE: 1 & 12	EXIST.	E153	RM. #101G	EXTERIOR	
E154	3'-6" W x 7'-0" H		EXIST. - HOLLOW METAL				EXISTING - HOLLOW METAL		EXIST.	E154			EXISTING TO REMAIN, SEE NOTE: 1	EXIST.	E154	RM. #101A	RM. #101F	
E155	3'-6" W x 7'-0" H		EXIST. - HOLLOW METAL				EXISTING - HOLLOW METAL		EXIST.	E155			EXISTING TO REMAIN, SEE NOTE: 1 & 12	EXIST.	E155	RM. #101F	EXTERIOR	
E156	4'-0" W x 7'-0" H		EXIST. - HOLLOW METAL				EXISTING - HOLLOW METAL		EXIST.	E156			EXISTING TO REMAIN, SEE NOTE: 1	EXIST.	E156	RM. #101F	RM. #101G	
E157	3'-0" W x 7'-0" H		EXIST. - HOLLOW METAL				EXISTING - HOLLOW METAL		EXIST.	E157			EXISTING TO REMAIN, SEE NOTE: 1 & 12	EXIST.	E157	RM. #101A	EXTERIOR	
E158	3'-0" W x 7'-0" H		EXIST. - HOLLOW METAL				EXISTING - HOLLOW METAL		EXIST.	E158			EXISTING TO REMAIN, SEE NOTE: 1 & 12	EXIST.	E158	RM. #101B	EXTERIOR	
E159	3'-0" W x 6'-8" H	1 3/4"	HOLLOW METAL	G			HOLLOW METAL	1	H-7	J-7			SEE NOTE: 3 & 14	#004	159	RM. #101B	RM. #101B	
E160	3'-0" W x 6'-8" H		EXIST. - HOLLOW METAL				EXISTING - HOLLOW METAL		EXIST.	E160			EXISTING TO REMAIN, SEE NOTE: 1	EXIST.	E160	RM. #101B	CLOSURE	
E161	3'-0" W x 7'-0" H		EXIST. - HOLLOW METAL				EXISTING - HOLLOW METAL		EXIST.	E161			EXISTING TO REMAIN, SEE NOTE: 1	EXIST.	E161	RM. #101B	RM. #101B	
E162	3'-0" W x 7'-0" H		EXIST. - HOLLOW METAL				EXISTING - HOLLOW METAL		EXIST.	E162			EXISTING TO REMAIN, SEE NOTE: 1	EXIST.	E162	RM. #101C	RM. #101C	
E163	4'-6" W x 7'-0" H		EXIST. - HOLLOW METAL				EXISTING - HOLLOW METAL		EXIST.	E163			EXISTING TO REMAIN, SEE NOTE: 1 & 12	EXIST.	E163	EXTERIOR	RM. #101C	
E164	3'-0" W x 6'-8" H	1 3/4"	HOLLOW METAL	G			HOLLOW METAL	1	H-7	J-7			SEE NOTE: 3, 11 & 14	#010A	164	RM. #101B	RM. #101C	
E165	3'-0" W x 6'-8" H	1 3/4"	HOLLOW METAL	F			HOLLOW METAL	1	H-8	J-8			SEE NOTE: 3 & 14	#010	165	RM. #101B	RM. #101C	
E166	3'-0" W x 6'-8" H		EXIST. - HOLLOW METAL				EXISTING - HOLLOW METAL		EXIST.	E166			EXISTING TO REMAIN, SEE NOTE: 1	EXIST.	E166	RM. #101B	RM. #101A	
E167	3'-6" W x 6'-8" H	1 3/4"	HOLLOW METAL	F			HOLLOW METAL	1	H-7	J-7			SEE NOTE: 3, 14 & 16	#010	167	RM. #102A	RM. #102B	
E201	3'-0" W x 6'-8" H		EXIST. - HOLLOW METAL				EXISTING - HOLLOW METAL		EXIST.	E201			EXISTING TO REMAIN, SEE NOTE: 1	EXIST.	E201	RM. #201A	RM. #201B	
202	3'-0" W x 6'-8" H	1 3/4"	HOLLOW METAL	G			HOLLOW METAL	1	H-8	J-8			SEE NOTE: 3 & 14	#010	202	RM. #201A	RM. #201C	



DOOR & FRAME REMARKS:

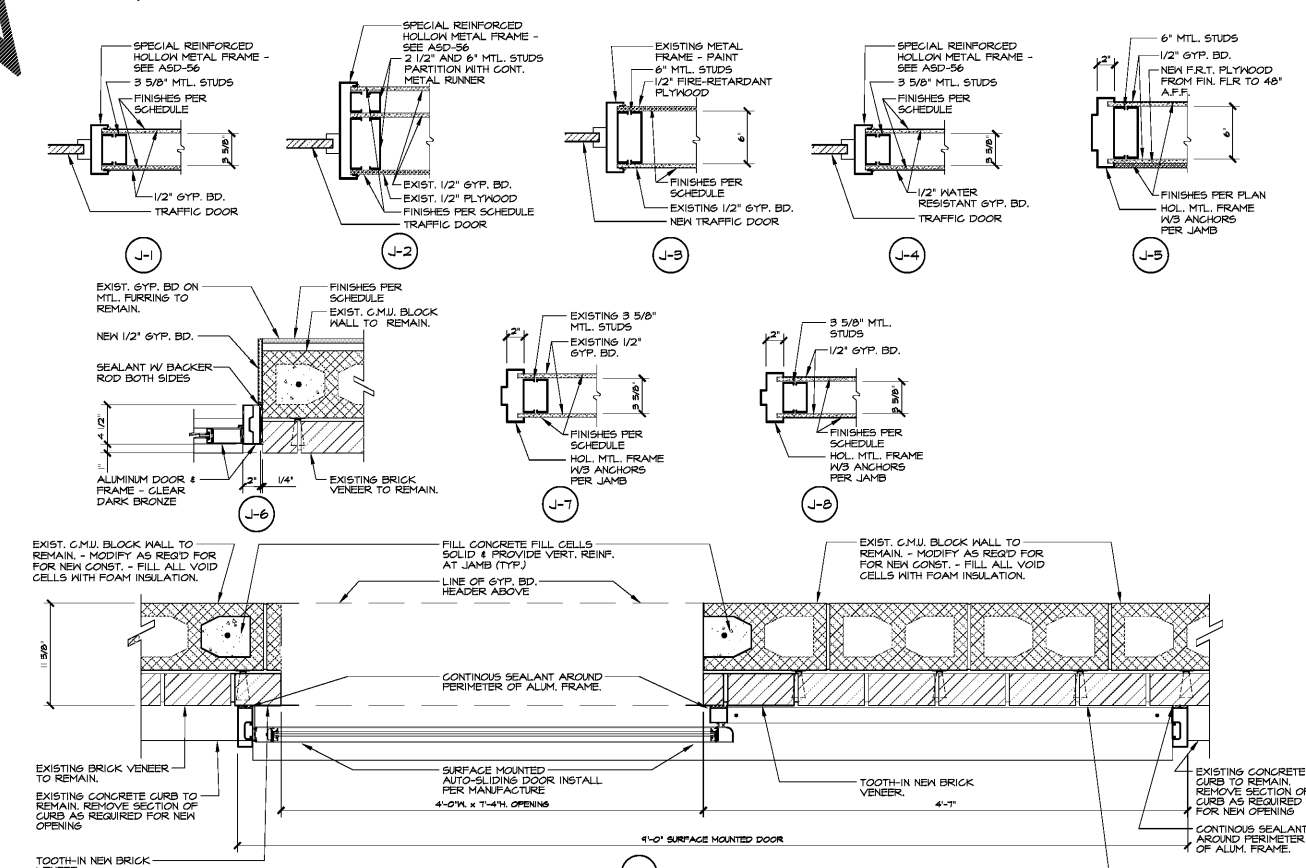
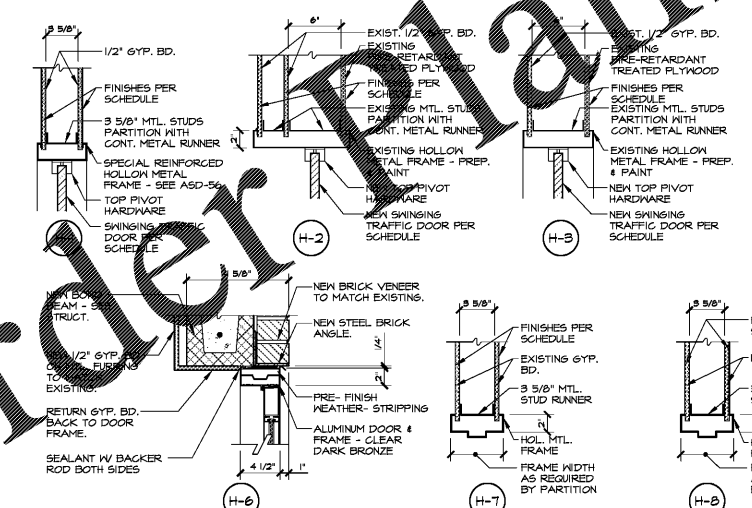
- EXIST. DOOR & FRAME TO REMAIN - CLEAN, SAND, PRIME & PAINT.
- GLASS TO BE PROVIDED AND INSTALLED BY GENERAL CONTRACTOR.
- SEE SPECIFICATIONS FOR HARDWARE SET IDENTIFICATION.
- NEW AUTOMATIC SLIDING DOOR TO BE PROVIDED BY KROGER & INSTALLED BY GENERAL CONTRACTOR. S.C. TO PROVIDE NEW PRE-FINISHED BRASS METAL GLASS PANELS AT JAMBS. DOOR & FRAME COLOR TO MATCH EXISTING STOREFRONT.
- SURFACE MOUNTED SINGLE AUTOMATIC SLIDING DOOR TO BE PROVIDED BY KROGER & INSTALLED BY GENERAL CONTRACTOR - COLOR DARK BRONZE.
- NEW DOOR PROVIDED BY KROGER & INSTALLED BY GENERAL CONTRACTOR.
- SEE SPECIFICATION SECTION 08 30 00 IMPACT TRAFFIC DOORS.
- NEW SPECIAL REINFORCED HOLLOW METAL FRAME ON METAL STUD PARTITION, PROVIDED AND INSTALLED BY CONTRACTOR - REFERENCE ASD-56.
- REMOVE EXISTING TRAFFIC DOOR & HARDWARE. FRAME TO REMAIN - CLEAN, SAND, PRIME & PAINT.
- BEFORE KROGER PROJECT MANAGER ORDERS PLASTIC DOORS, THE GENERAL CONTRACTOR IS TO REVIEW DRAWINGS, MEASURE EXISTING OPENINGS AND PROVIDE KROGER PROJECT MANAGER WITH A LIST OF PLASTIC DOORS NEEDED FOR PROJECT.
- BLINDS FOR HALF GLASS DOOR PROVIDED AND INSTALLED BY GENERAL CONTRACTOR.
- EXIST. DOOR & FRAME TO REMAIN - CLEAN, SAND, PRIME & PAINT. REMOVE EXISTING ALARM SYSTEM COMPONENTS REQUIRED FOR NEW ALARM SYSTEM.
- EXISTING DOOR & FRAME TO REMAIN - CLEAN, SAND, PRIME & PAINT FRAME ONLY.
- NEW DOOR & FRAME PROVIDED (BOTH ACCOUNT) & INSTALLED BY GENERAL CONTRACTOR.
- NEW DOOR & FRAME PROVIDED & INSTALLED BY GENERAL CONTRACTOR. DOOR & FRAME COLOR TO MATCH EXISTING STOREFRONT.
- DOOR TO RECEIVE DOOR VENEER.
- *WARD AND 60\"/>

DOOR SCHEDULE GENERAL NOTES:

- REFER TO SPECIFICATIONS FOR ADDITIONAL INFORMATION.
- PAINT ALL INTERIOR HOLLOW METAL DOORS & FRAMES - CLEAN, SAND, PRIME & PAINT MINIM. FINISHES PER SCHEDULE.
- FRAMES FOR 000 SEE PARTITIONS MUST RETURN TO FACE OF PARTITION WITH CONT.
- ALL DOORS TO HAVE KICK PLATE ON INTERIOR SIDE ONLY.
- KICK PLATE TO BE INSTALLED ON ALL INTERIOR DOORS, BOTH SIDES OF EXTERIOR DOORS. TO HAVE KICK PLATE ON INTERIOR SIDE ONLY.
- CONTRACTOR TO INSTALL PLASTIC STRIP CURTAIN AT DAILY COOLER, SMOOTH STRIP CURTAIN TO BE PROVIDED BY KROGER PROJECT MANAGER.
- CONTRACTOR TO PROVIDE ALL OPENINGS AND PROVIDE SIZES TO KROGER PROJECT MANAGER.

REFERENCE DETAILS:

H-1 through H-8, J-1 through J-8



HEAD DETAILS
SCALE 1/2\"/>

JAMB DETAILS
SCALE 1/2\"/>

Order Plans



ARCHITECTURAL INC.
1155 Washington Road, Evans, Georgia 30809
770-455-5495 • fax: 770-455-5498
www.dollarandfewers.com



NO.	REVISIONS

Order Plans

A With-in-the-Walls Remodel for:
KROGER STORE #GA-414
4355 WASHINGTON ROAD, EVANS, GEORGIA 30809
DOOR SCHEDULE, NOTES & DETAILS

COPYRIGHT
All drawings, specifications and copies thereof are the property of D&E Dollar & Fewers Architectural Inc. and shall remain the property of D&E Dollar & Fewers Architectural Inc. No part of these drawings may be reproduced or transmitted in any form or by any means, electronic, mechanical, photocopying, recording, or by any information storage and retrieval system, without the prior written permission of D&E Dollar & Fewers Architectural Inc.
COPYRIGHT

ISSUE DATE:	JANUARY 29, 2018
PROJECT NO.:	217156
SHEET NUMBER:	A6.1