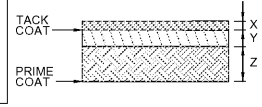


NOTE:  
MATERIALS AND CONSTRUCTION PROCEDURES SHALL BE IN ACCORDANCE WITH THE GEORGIA DEPARTMENT OF TRANSPORTATION SPECIFICATIONS, SECTIONS 310, 400, 413, 815, 820, 824, & 828.

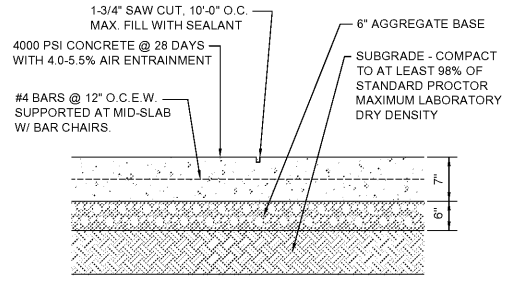


FLEXIBLE PAVEMENT RECOMMENDATIONS		
MATERIALS	ASPHALT PAVEMENT SECTION THICKNESS (INCHES)	GEORGIA DEPARTMENT OF TRANSPORTATION SPECIFICATIONS
ASPHALTIC CONCRETE SURFACE COURSE	X=1-1/2"	9.5MM SUPERPAVE
ASPHALTIC CONCRETE BINDER COURSE	Y=2-1/2"	19MM SUPERPAVE
AGGREGATE BASE COURSE	Z=8"	GRADED AGGREGATE BASE

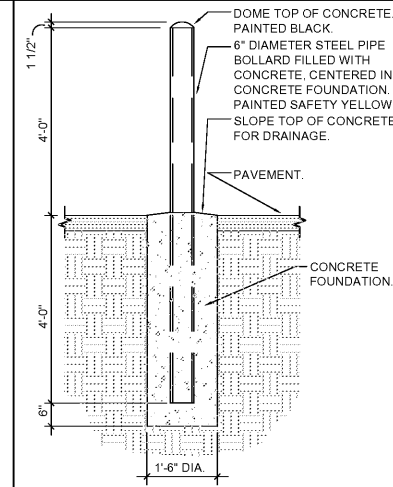
(a) COMPACTION DENSITY REQUIREMENTS BY SECTION 828, AND GDT 39 OR GDT 59.  
(b) TACK COAT = PG 64-22 ASPHALT CEMENT OR CATIONIC EMULSIFIED ASPHALT CRS-2H OR CRS-3 @ 0.04 GAL/S.Y. TO 0.06 GAL/S.Y.

**ASPHALT PAVING DETAIL**  
NOT TO SCALE

NOTE:  
MATERIALS AND CONSTRUCTION PROCEDURES SHALL BE IN ACCORDANCE WITH THE GDOT STANDARD SPECIFICATIONS.



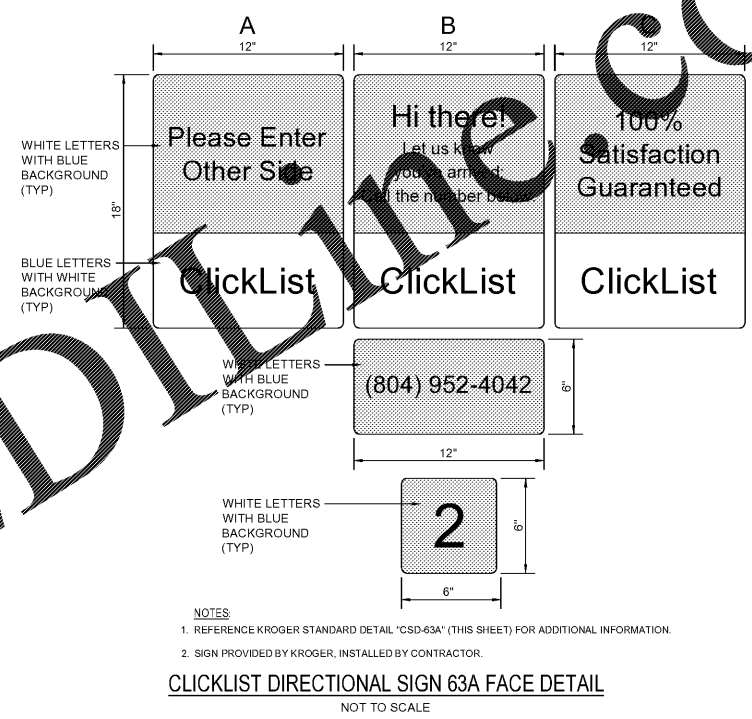
**HEAVY DUTY CONCRETE PAVEMENT DETAIL**  
NOT TO SCALE



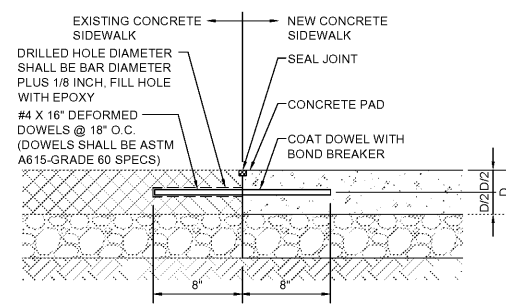
**BOLLARD DETAIL**  
NOT TO SCALE



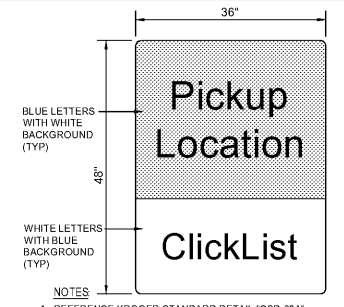
111 E. Jackson Avenue • Suite 101  
Knoxville, Tennessee • 37915  
phone: 865-546-9374 • fax: 865-673-9028  
e-mail: design@dollar-ewers.com



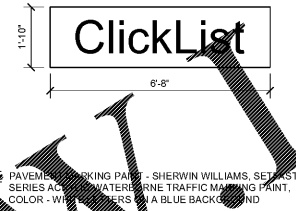
**CLICKLIST DIRECTIONAL SIGN 63A FACE DETAIL**  
NOT TO SCALE



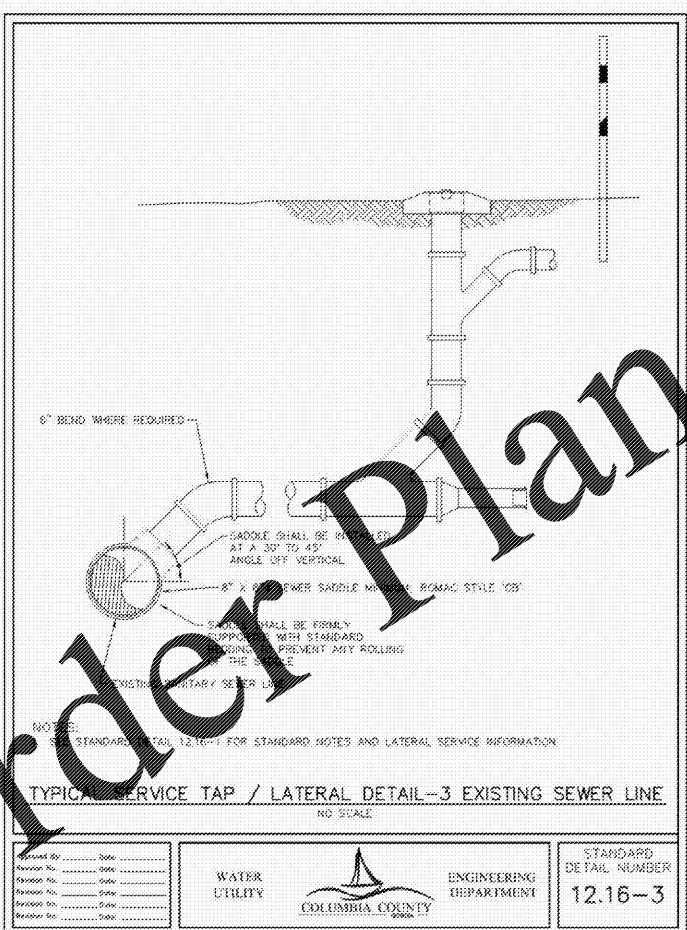
**CONCRETE DOWEL DETAIL**  
NOT TO SCALE



**CLICKLIST INFORMATIONAL SIGN 62A FACE DETAIL**  
NOT TO SCALE



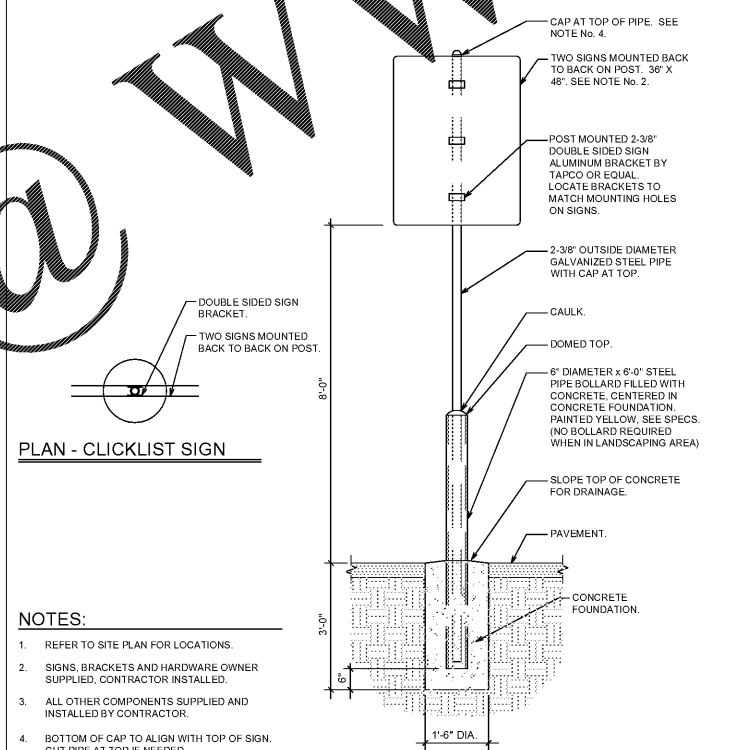
**PAVEMENT MARKING DETAIL**  
NOT TO SCALE



STANDARD DETAIL 12.16-3 FOR STANDARD NOTES AND LATERAL SERVICE INFORMATION

**TYPICAL SERVICE TAP / LATERAL DETAIL - 3 EXISTING SEWER LINE**  
NO SCALE

Revised By: _____ Date: _____	  	STANDARD DETAIL NUMBER
Revision No.: _____		12.16-3
Revision No.: _____		
Revision No.: _____		

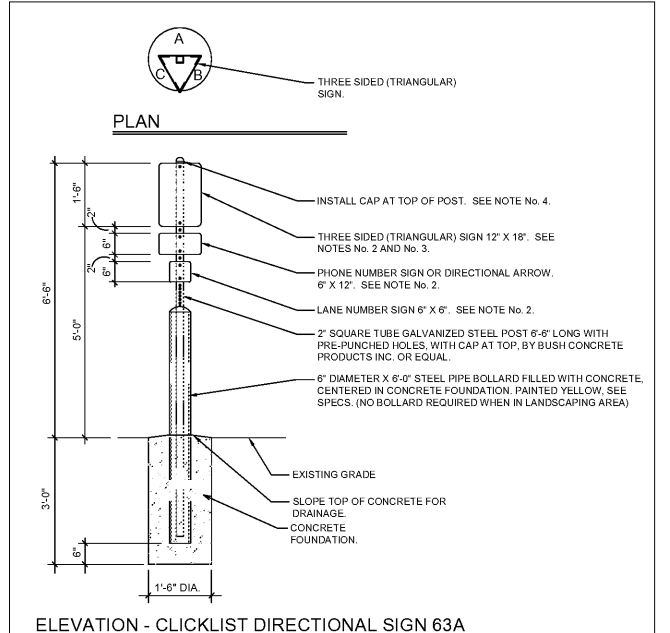


**PLAN - CLICKLIST SIGN**

**ELEV./SECTION - CLICKLIST SIGN 62A**

- NOTES:
- REFER TO SITE PLAN FOR LOCATIONS.
  - SIGNS, BRACKETS AND HARDWARE OWNER SUPPLIED, CONTRACTOR INSTALLED.
  - ALL OTHER COMPONENTS SUPPLIED AND INSTALLED BY CONTRACTOR.
  - BOTTOM OF CAP TO ALIGN WITH TOP OF SIGN. CUT PIPE AT TOP IF NEEDED.
  - REFER TO SPECIFICATION SECTION 10 14 27 FOR ADDITIONAL INFORMATION.

<b>CLICKLIST INFORMATIONAL SIGN 62A</b>	DATE: 2/19/16 SCALE: NONE DRAWN: ZAW
<b>MASTER SPECIFICATION DETAIL</b>	<b>CSD-62A</b>



**ELEVATION - CLICKLIST DIRECTIONAL SIGN 63A**

- NOTES:
- REFER TO SITE PLAN FOR LOCATIONS.
  - MOUNT SIGN ON POST USING PRE-PUNCHED HOLES IN POST.
  - SIGNS AND MOUNTING HARDWARE OWNER SUPPLIED, CONTRACTOR INSTALLED.
  - BOTTOM OF CAP TO ALIGN WITH TOP OF SIGN.
  - REFER TO SPECIFICATION SECTION 10 14 27 FOR ADDITIONAL INFORMATION.

<b>CLICKLIST DIRECTIONAL SIGN 63A</b>	DATE: 2/19/16 SCALE: NONE DRAWN: ZAW
<b>MASTER SPECIFICATION DETAIL</b>	<b>CSD-63A</b>



NO.	REVISIONS

A With-in-the-Walls Remodel for:  
**KROGER STORE #GA-414**  
4355 WASHINGTON ROAD, EVANS, GEORGIA 30809

**DETAILS**

**COPYRIGHT**  
ALL DRAWINGS, SPECIFICATIONS AND COPIES THEREOF FURNISHED BY DOLLAR & EWERS ARCHITECTURE, INC. ARE AND SHALL REMAIN THE PROPERTY OF DOLLAR & EWERS ARCHITECTURE, INC. THEY ARE TO BE USED ONLY WITH RESPECT TO THE PROJECT, PROJECT AND SITE SPECIFIC. NO PARTS MAY BE REPRODUCED OR TRANSMITTED IN ANY FORM OR BY ANY MEANS, ELECTRONIC OR MECHANICAL, INCLUDING PHOTOCOPYING, RECORDING, OR BY ANY INFORMATION STORAGE AND RETRIEVAL SYSTEM, WITHOUT PERMISSION IN WRITING FROM DOLLAR & EWERS ARCHITECTURE, INC. THIS PERMISSION IS LIMITED TO THE CONTRACT. SUCH PERMISSIONS ARE NOT TO BE USED FOR ANY OTHER PROJECTS. SUBMITTALS FOR REVIEW SHALL BE RETURNED TO THE ARCHITECT AT THE COMPLETION OF THE PROJECT. SUBMITTALS FOR REVIEW SHALL BE RETURNED TO THE ARCHITECT AT THE COMPLETION OF THE PROJECT. THIS PROJECT IS NOT TO BE CONSIDERED A PUBLICATION IN VIOLATION OF THE ARCHITECT'S COMMON LAW COPYRIGHT OR OTHER RESERVED RIGHTS.

**COPYRIGHT**

ISSUE DATE: JANUARY 29, 2018  
PROJECT NO: PELLC # 125-228  
SHEET NUMBER: **C-5.1**