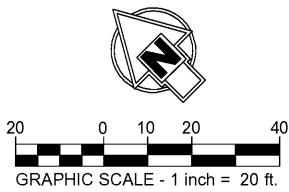
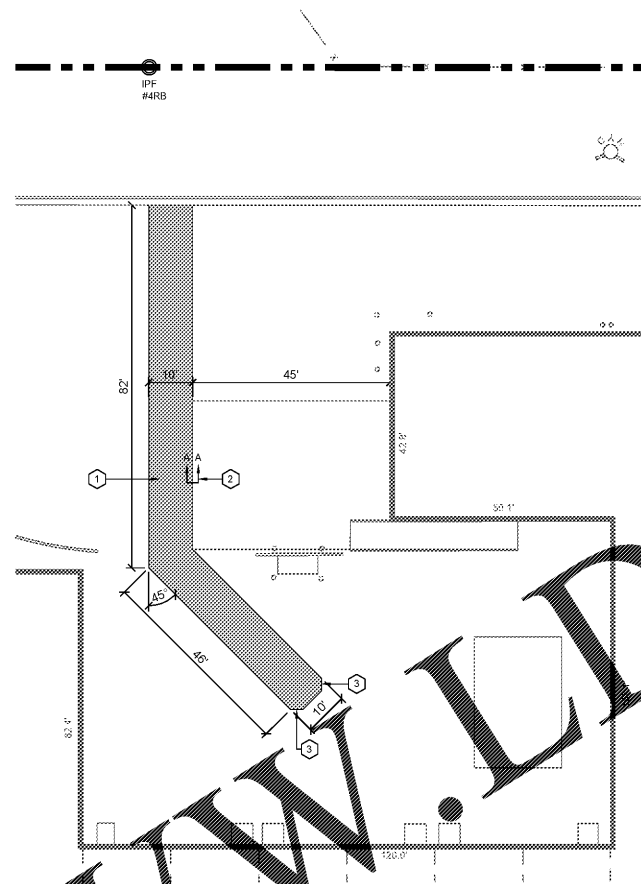


SEWER SERVICE RELOCATION EXISTING CONDITIONS



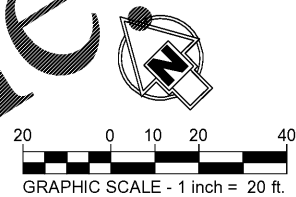
EXISTING CONDITIONS NOTE:
 THIS SITE WAS NOT RECENTLY SURVEYED. EXISTING CONDITIONS ARE BASED ON AERIALS, MAPS, AN AS-BUILT TOPOGRAPHIC SURVEY BY SURVEYS PLUS, INC., DATED 05-15-2015. THE EXACT LOCATION OF EXISTING UTILITIES IS NOT KNOWN. CONTRACTOR SHALL USE CAUTION DURING EXCAVATION AND CONSTRUCTION. CONTRACTOR SHALL CALL 811 TO VERIFY LOCATION OF UNDERGROUND UTILITIES.



SEWER SERVICE RELOCATION SITE PLAN

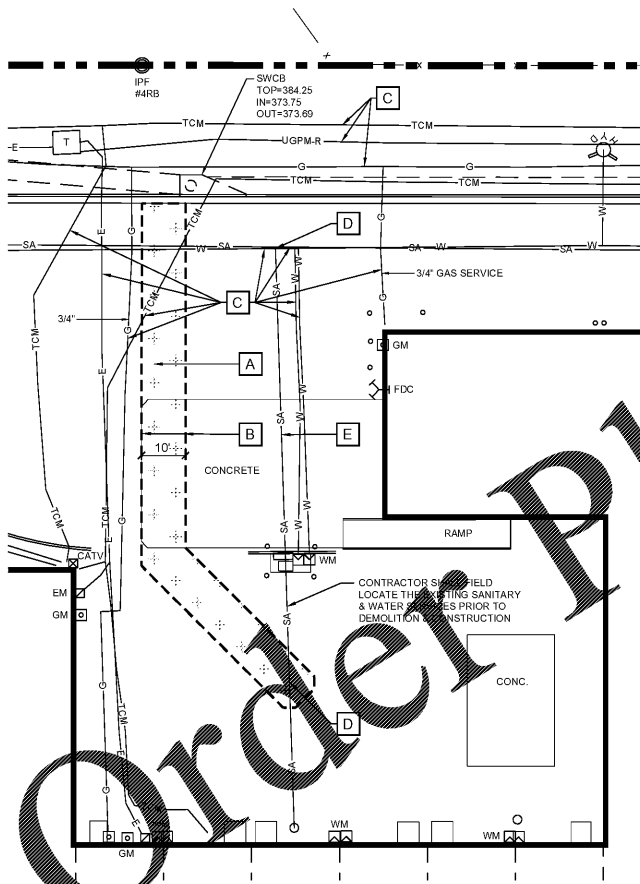
PERRY ENGINEERING, LLC
 100 NORTH MAIN STREET, SUITE F (615) 855-2220 (V)
 GOODLETTSVILLE, TENNESSEE 37072 (615) 855-2221 (F)

811
 Know what's below.
 Call before you dig.

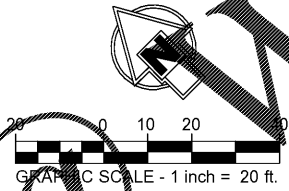


PAVING LEGEND:
 HEAVY DUTY CONCRETE SECTION (REF. C-4.1) (PROVIDE BID ALTERNATE FOR ASPHALT CUTS IN ASPHALT)

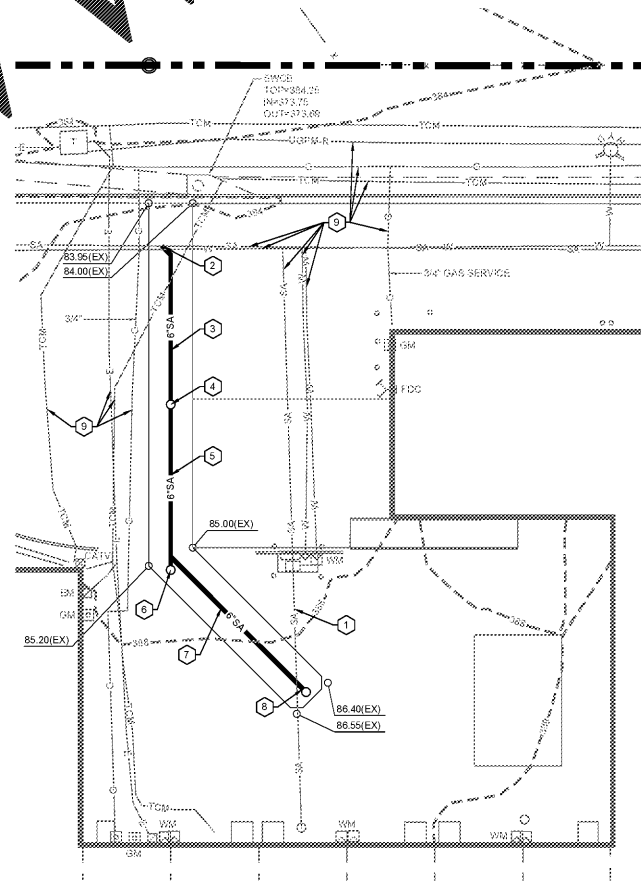
SITE KEY NOTES:
 1 HEAVY DUTY CONCRETE SECTION (REF. C-5.1) (PROVIDE BID ALTERNATE FOR ASPHALT CUTS IN ASPHALT)
 2 DOWEL, PROPOSED CONCRETE INTO EXISTING SLAB (REF. C-5.1 FOR DETAILS)
 3 2' CHAMFER



SEWER SERVICE RELOCATION DEMOLITION PLAN

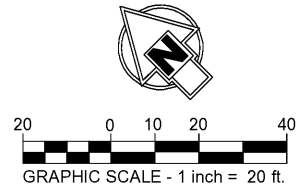


DEMOLITION LEGEND:
 A SAW CUT AND REMOVE EXISTING CONCRETE PAVEMENT TO SUBGRADE. REMOVE SUFFICIENT AMOUNT OF MATERIAL TO INSTALL FULL-DEPTH PAVEMENT TO GRADES SHOWN ON THIS SHEET. SECTION DETAILS ON SHEET C-5.1
 B SAW CUT LINE OF EXISTING PAVEMENT.
 C EXISTING UTILITY TO REMAIN & BE PROTECTED THROUGHOUT CONSTRUCTION.
 D CUT & CAP EXISTING SANITARY SEWER SERVICE AT TEE, ABANDON IN PLACE (FILL WITH NON-SHRINK GROUT)



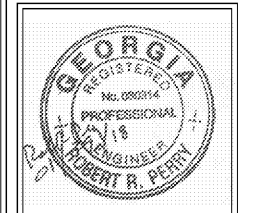
SEWER SERVICE RELOCATION GRADING & UTILITY PLAN

LEGEND
 628 PROPOSED CONTOUR
 627 EXISTING CONTOUR
 626 EXISTING INDEX CONTOUR
 628.50(T) TOP OF CURB ELEVATION
 628.00(B) BOTTOM OF CURB ELEVATION
 624.00(EX) EXISTING ELEVATION
 FLOW DIRECTION ARROW



GRADING & UTILITY KEY NOTES:
 1 CONTRACTOR SHALL FIELD LOCATE THE EXISTING SANITARY & WATER SERVICES PRIOR TO DEMOLITION & CONSTRUCTION
 2 TIE 6" SDR 35 PVC SERVICE INTO EXISTING SANITARY MAIN, INV. = 372.67 WITH 8"x6" TEE-WYE
 3 INSTALL 36 L.F. OF 6" SDR 35 PVC @ 1.0% MIN.
 4 INSTALL TRAFFIC BEARING CLEANOUT, T.C. = 384.70, INV. = 373.07
 5 INSTALL 36 L.F. OF 6" SDR 35 PVC @ 1.0% MIN.
 6 INSTALL TRAFFIC BEARING CLEANOUT, T.C. = 385.25, INV. = 373.43
 7 INSTALL 42 L.F. OF 6" SDR 35 PVC @ 1.0% MIN.
 8 TIE 6" SDR 35 PVC SERVICE INTO EXISTING SANITARY MAIN WITH 6" WYE & TRAFFIC BEARING CLEANOUT, T.C. = 386.50, INV. = 373.85
 9 CONTRACTOR TO VERIFY UTILITY SERVICE LOCATION & DEPTH PRIOR TO CONSTRUCTION

D&E DOLLAR EWBERS ARCHITECTURE, INC.
 111 E. Jackson Avenue • Suite 101
 Knoxville, Tennessee • 37915
 phone: 865-546-9374 • fax: 865-673-9028
 e-mail: design@dollar-ewbers.com



NO.	REVISIONS

A With-in-the-Walls Remodel for:
KROGER STORE #GA-414
 4355 WASHINGTON ROAD, EVANS, GEORGIA 30809
SANITARY SERVICE PLANS

COPYRIGHT
 ALL DRAWINGS, SPECIFICATIONS AND COPIES THEREOF FURNISHED BY DOLLAR & EWBERS ARCHITECTURE, INC. ARE AND SHALL REMAIN THE PROPERTY OF DOLLAR & EWBERS ARCHITECTURE, INC. THEY ARE TO BE USED ONLY WITH RESPECT TO THE PROJECT, PROJECT AND SITE SPECIFIC. USE WITH ANY OTHER PROJECT, WITHOUT THE WRITTEN PERMISSION OF DOLLAR & EWBERS ARCHITECTURE, INC. IS STRICTLY PROHIBITED. FOR EACH PARTY TO THE CONTRACT, SUCH DOCUMENTS ARE THE PROPERTY OF DOLLAR & EWBERS ARCHITECTURE, INC. AND SHALL BE RETURNED TO THEM UPON REQUEST AT THE COMPLETION OF THE PROJECT. SUBMISSION OF THESE DOCUMENTS TO ANY OTHER PARTY OR FOR OTHER PURPOSES IN CONNECTION WITH THE PROJECT IS NOT TO BE CONSIDERED A PUBLICATION IN VIOLATION OF DOLLAR & EWBERS ARCHITECTURE, INC.'S COMMON LAW COPYRIGHT OR OTHER RESERVED RIGHTS.
COPYRIGHT

ISSUE DATE: JANUARY 29, 2018
 PROJECT NO: PELLC # 125-228
 SHEET NUMBER

C-4.1