

OR # NUMBER INDICATES DROP NUMBER FROM SCHEDULE BELOW.

DROP #	LOCATION/FIXTURE	DESCRIPTION	DATA
1	COPIER/PRINTER	WALL	1
2	WIRELESS	COILED ABOVE CEILING	1
3	WIRELESS	COILED ABOVE CEILING	1
4	WIRELESS	COILED ABOVE CEILING	1
5	WIRELESS	COILED ABOVE CEILING	1
6	SHOPPERTRACK	COILED ABOVE CEILING	1
7	N5C DEVICE	COILED ABOVE CEILING	1
8	APC MACHINE	WALL	2
9	MINI HUB	WALL	1
10	QUE SCREEN*	WALL	1
11	CREDENZA	WALL	1
12	CREDENZA	WALL	1
13	BREAK COUNTER	WALL	1
14	MANAGERS OFFICE	WALL	1
15	DUAL POS	FLOOR	6
16	DUAL POS	FLOOR	3
17	DUAL POS	FLOOR	6
18	DUAL POS	FLOOR	3
19	DUAL POS	FLOOR	3
20	DIGITAL DISPLAY	FLOOR	3
21	PROLIPHIX THERMOSTAT	WALL	1
22	PROLIPHIX THERMOSTAT	WALL	1

- NOTES:
- PROVIDE CATEGORY 5e UTP CABLE TO ACCESSIBLE CEILING SPACE.
 - PROVIDE CATEGORY 5e UTP CABLE TO ACCESSIBLE CEILING SPACE.
 - OUTLETS, CABLES, LAYING, AND TERMINATIONS BY COMMUNICATIONS CONTRACTOR.
 - COMMUNICATIONS CONTRACTOR TO PROVIDE PLENUM RATED CABLE FOR SECURITY DROPS. PROVIDE AN ADDITIONAL 25' CABLE COILED AT LAN RACK FOR CONNECTION TO SECURITY SYSTEM BY SECURITY CONTRACTOR.
 - SHOPPERTRACK TERMINATIONS BY CONTRACTOR.
 - PLASMA SCREEN VIDEO CABLE PROVIDED AND INSTALLED BY COMMUNICATIONS SYSTEM CONTRACTOR.
 - PANIC BUTTONS TO BE DAISY-CHAINED FROM SINGLE SECURITY DROP IN EACH GROUPING OF POS AND TECH.
 - FOR TO PROVIDE (4) RJ-45 JACK ON THE TELEPHONE BACKBOARD, THE JACK TO BE CONNECTED TO THE SINGLE JACK LOCATED AT THE PLASMA SCREEN LOCATION.

CONDUIT SIZE (DATA)	MAXIMUM # OF CABLES
1-1/4"	10
1-1/2"	15

NOT TO SCALE
COMMUNICATION SYSTEMS LEGEND A25

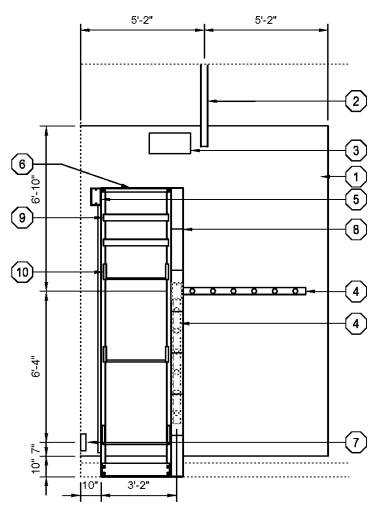
1/4"=1'-0"
COMMUNICATION PLAN A13

- EXISTING CONDITIONS WERE TAKEN FROM ORIGINAL DRAWINGS AND SITE VISITS AND MAY NOT REFLECT EXACT "AS-BUILT" CONDITIONS. FIELD VERIFY ALL EXISTING CONDITIONS PRIOR TO SUBMITTING FINAL BIDS. CAREFULLY COORDINATE NEW WORK AND DEMOLITION WITH ALL OTHER DISCIPLINES AND EXISTING CONDITIONS.
- ALL VOICE, DATA, FIRE ALARM, T-STAT, ETC. WIRING ROUTED EXPOSED ABOVE CEILING SHALL BE PLENUM RATED CABLE SUITABLE FOR INSTALLATION IN RETURN AIR PLENUMS.
- REFERENCE ARCHITECTURAL DRAWINGS FOR EXACT DIMENSIONS AND LOCATIONS FOR UNDER CARPET CABLE AND SALES FIXTURE POWER/VOICE/DATA WALL AND FLOOR BOXES.
- ALL DATA CABLING TO BE FURNISHED AND INSTALLED BY COMMUNICATIONS CONTRACTOR. TERMINATIONS AT OUTLETS AND TERMINATIONS TO IT RACK PROVIDED BY COMMUNICATIONS CONTRACTOR. GC TO CONTRACT WITH VENDOR.
- PANIC BUTTONS TO BE DAISY-CHAINED FROM SINGLE SECURITY DROP IN EACH GROUPING OF POS AND TECH COUNTERS.
- PROVIDE WHITE COVER PLATE FOR ALL OUTLETS AND SWITCHES.
- VERIFY EXACT LOCATION AND MOUNTING HEIGHT OF ALL RECEPTACLES, JUNCTION BOXES AND OTHER WIRING DEVICES WITH ARCHITECT PRIOR TO ROUGH-IN.
- CABLE VENDOR MUST TEST ALL DATA CABLES VIA LINKWARE PC CABLE TEST SOFTWARE OR APPROVED TESTING SOFTWARE AND PROVIDE REPORT TO OWNER.

NOT TO SCALE
GENERAL NOTES T01

- PROVIDE PLENUM RATED CATEGORY 5E CABLE FOR CONNECTION OF "SHOPPERTRAK". RUN CABLE ABOVE CEILING FROM DATA RACK TO PLENUM ABOVE FRONT DOOR. TIE OFF ADDITIONAL 15' CABLE AT END. VERIFY ROUTE AND LOCATION WITH ARCHITECT. SUPPORT CABLE FROM STRUCTURE USING APPROVED HANGERS. DO NOT LAY ON CEILING GRID.
- PROVIDE PLENUM RATED CATEGORY 5E CABLE FOR CONNECTION OF WIRELESS ACCESS POINT. RUN CABLE ABOVE CEILING FROM DATA RACK TO PLENUM AT LOCATIONS SHOWN. VERIFY ROUTE AND LOCATION WITH ARCHITECT. SUPPORT CABLE FROM STRUCTURE USING APPROVED HANGERS. DO NOT LAY ON CEILING GRID.
- PROVIDE A FLUSH MOUNT SINGLE GANG BACKBOX IN WALL FOR DATA OUTLETS. PROVIDE CONDUIT (WITH PULL STRING) STUBBED TO ACCESSIBLE CEILING SPACE FOR DATA CABLING. TERMINATE WITH BUSHINGS. DATA OUTLETS AND CABLING PROVIDED BY COMMUNICATIONS CONTRACTOR. VERIFY EXACT LOCATION WITH ARCHITECT PRIOR TO INSTALLATION.
- PROVIDE 2" CONDUIT (WITH NYLON PULL STRING) FROM LANDLORD TELEPHONE SERVICE TERMINATION POINT TO BACKBOARD EDGE. VERIFY LOCATION OF TERMINATION PRIOR TO CONSTRUCTION.
- PROVIDE COMMUNICATIONS GROUND BAR. REFER TO DETAIL S01, SHEET E-5, FOR ADDITIONAL INFORMATION.
- DATA RACK, BY CABLING VENDOR. REFER TO ARCHITECTURAL PLANS FOR LOCATION.
- PROVIDE PLENUM RATED CATEGORY 5E CABLE AND JACK ABOVE CEILING FOR CONNECTION OF NCS DEVICE. RUN CABLE ABOVE CEILING FROM DATA RACK TO PLENUM ABOVE FRONT DOOR. VERIFY ROUTE AND LOCATION WITH ARCHITECT. SUPPORT CABLE FROM STRUCTURE USING APPROVED HANGERS. DO NOT LAY ON CEILING GRID.
- PROVIDE SINGLE GANG BACKBOX WITH CONDUIT ROUGH IN AND DATA CABLE FOR PROLIPHIX THERMOSTAT. PROVIDE 3'-0" OF DATA CABLE COILED IN BACK BOX FOR FUTURE CONNECTION TO PROLIPHIX THERMOSTAT. ROUTE DATA CABLE TO LAN RACK AND PROVIDE 10'-0" ABOVE LAN RACK THE MALE TERMINATION FOR FUTURE CONNECTION TO LAN RACK. REFER TO SHEET M-1 FOR THERMOSTAT LOCATIONS.
- REFER TO SHEET E-2 FOR FLATWIRE DATA CABLING SPECIFICATIONS.
- PROVIDE SINGLE GANG BACKBOX ATTACHED TO FIXTURE WITH (6) JACKS AND TERMINATE FLATWIRE CABLING IN BACKBOX. PROVIDE PATCH CABLES FROM JACKS TO DEVICES IN ADJACENT POS THROUGH PROVIDED OPENING IN BASE OF POS.

NOT TO SCALE
COMMUNICATION PLAN NOTES A01



- 72" WIDE X 96" HIGH X 3/4" F.R.T. PLYWOOD PHONE BOARD. PAINT TO MATCH WALL.
- 2" CONDUIT WITH PULL STRING
- GROUND BAR WITH GROUND WIRE TO BUILDING GROUND AND IT/LAN RACK. RE: ELECTRICAL
- PLUGMOLDS (2) WITH 6 OUTLETS EACH MOUNTED ON PHONE BOARD. RE: SHEET E2.
- JUNCTION BOX MOUNTED ON PHONE BOARD WITH CONDUIT TO PLUGMOLD MOUNTED ON SIDE OF LAN RACK WITH 12 OUTLETS TOTAL. RE: ELECTRICAL
- PROVIDE CHATSWORTH PRODUCTS MODEL #55053-X03 2-POST IT/LAN RACK WITH MODEL #10250-X18 CABLE RUNWAY. IT/LAN RACK GROUNDED BY CABLE VENDOR.
- NEMA CONNECTION FOR UPS (5-20R)
- PROVIDE LEVITON MODEL #4980L-VFO VERTICAL WIRE MANAGER ON OUTSIDE CORNER OF RACK. PROVIDE PAINDUIT MODEL #CMPHPF1 FRONT HORIZONTAL WIRE MANAGER.
- PROVIDE LEVITON MODEL #53598-UXX UNIVERSAL PATCH PANELS. PROVIDE QUANTITY OF PORTS AS REQUIRED PER PROJECT.
- PROVIDE (4) PENTAIR MODEL #ESH1915 RACK SHELVES FOR IT EQUIPMENT. PROVIDE QUANTITY AS REQUIRED PER PROJECT.

NOT TO SCALE
TELECOMMUNICATIONS RACK DETAIL A08

LDILLINE.COM

2000 SHAWNEE MISSION PARKWAY
STE 100 MISSION WOODS, KS 66205
TEL 816 502 1500 FAX 816 842 1878

Sprint

#1641 WHITEHAVEN PLAZA
4088 ELVIS PRESLEY BLVD.
SUITE 104
MEMPHIS, TENNESSEE 38116

HENDERSON ENGINEERS
8345 LENEXA DRIVE, SUITE 300
LENEXA, KS 66214
TEL (913) 742-5000 FAX (913) 742-5001
WWW.HENDERSONENGINEERS.COM
1850001011
TN. CORPORATE NUMBER: 3847

PROJECT NUMBER: 2017014-056
SHEET: AU-1-036
UNCHECKED BY: JSM
DATE: JANUARY 5, 2017

COMMUNICATIONS PLAN

SHEET NUMBER: **E-3**

J:\Lenexa\Programs\Bentley\SPRINT - MASTER\SPRINT - MASTER\F9 Memphis\000\01163.dwg, Pk1, 1/2/2018 12:45:09 PM, jandrugan, 1:1

VINCENT C. MASLONIS