



2000 SHAWNEE MISSION PARKWAY
 STE 100 MISSION WOODS, KS 66205
 TEL 816 502 1500 FAX 816 842 1878

Sprint
 #1641 WHITEHAVEN PLAZA
 4088 ELVIS PRESLEY BLVD.
 SUITE 104
 MEMPHIS, TENNESSEE 38116

HENDERSON ENGINEERS
 8345 LENEXA DRIVE, SUITE 300
 LENEXA, KS 66214
 TEL (913) 742-5000 FAX (913) 742-5001
 WWW.HENDERSONENGINEERS.COM
 1850001011
 TN. CORPORATE NUMBER: 3847

GENERAL DEMOLITION NOTES:

- COORDINATE ALL DEMOLITION WITH WHAT IS SHOWN ON ARCHITECTURAL PLANS. NOTIFY ARCHITECT OF ANY DISCREPANCIES. REMOVE ALL MECHANICAL EQUIPMENT, DUCTWORK, PIPING, AND ASSOCIATED APPURTENANCES THAT ARE NOT SHOWN AS BEING REUSED UNDER NEW WORK. WHERE NOT USED FOR RECONNECTION UNDER NEW WORK, REMOVE DUCTWORK AND PIPING BACK TO MAINS AND CAP AND SEAL AIR AND WATER TIGHT. DO NOT ABANDON IN PLACE. WHERE MECHANICAL PENETRATIONS THROUGH THE BUILDING ENVELOPE (I.E. ROOF PENETRATIONS) ARE REMOVED, SEAL AND REPAIR THE PENETRATION TO MATCH THE SURROUNDING CONSTRUCTION.
- PRIOR TO SUBMITTING BID, VISIT THE JOB SITE AND BECOME FULLY ACQUAINTED WITH THE EXISTING CONDITIONS OF THE PROJECT. REVIEW GENERAL NOTES, SPECIFICATIONS AND OTHER DRAWINGS FOR ADDITIONAL REQUIREMENTS THAT MAY NOT BE SPECIFICALLY CALLED OUT IN THIS PORTION OF THE CONSTRUCTION DOCUMENTS. NOTIFY ARCHITECT, ENGINEER OR OWNER, AS DEFINED IN BID DOCUMENTS, OF CONFLICTS OR DISCREPANCIES PRIOR TO SUBMISSION OF BID.
- OWNER RETAINS RIGHTS OF SALVAGE FOR EQUIPMENT AND FIXTURES TO BE REMOVED. COORDINATE WITH OWNER THE EQUIPMENT AND FIXTURES TO BE SALVAGED AND THE LOCATION FOR STORAGE. AVOID DAMAGE TO SALVAGED EQUIPMENT, FIXTURES AND DEVICES DURING DEMOLITION WORK AND DURING TRANSPORT TO OWNER'S DESIGNATED STORAGE LOCATION.
- AVOID DAMAGING EXISTING SURFACES AND EQUIPMENT TO REMAIN FOR NEW INSTALLATION. REPAIR DAMAGE CAUSED DURING WORK AT NO EXTRA COST TO THE OWNER.
- SEAL PENETRATIONS THROUGH FLOORS, WALLS, CEILINGS AND ROOFS WHERE MECHANICAL COMPONENTS ARE REMOVED AND WHERE THE EXISTING PENETRATION IS NOT USED FOR THE NEW INSTALLATION. REPAIR DAMAGED SURFACES TO MATCH ADJACENT AREAS OR AS INDICATED ON THE ARCHITECTURAL DRAWINGS.
- REMOVE HANGERS AND SUPPORTS WHERE DUCTWORK, PIPING AND/OR EQUIPMENT ARE REMOVED AND THE EXISTING HANGERS AND SUPPORTS ARE NOT USED FOR THE NEW INSTALLATION.
- INSTALL PERMANENT CAPS WHERE DUCTWORK AND PIPING IS REMOVED AND THE EXISTING TAPS ARE NOT USED FOR THE NEW INSTALLATION. WHERE DUCTWORK AND PIPING ARE REMOVED AND THE EXISTING TAPS WILL BE USED FOR THE NEW INSTALLATION, INSTALL TEMPORARY CAPS TO PROTECT THE INTERIOR SURFACES UNTIL NEW DUCTWORK AND PIPING ARE INSTALLED.
- INSPECT EXISTING EQUIPMENT TO REMAIN TO VERIFY THAT EQUIPMENT IS OPERATING PROPERLY. NOTIFY OWNER OF DAMAGED AND/OR MALFUNCTIONING COMPONENTS.
- WHERE SHUTDOWN OF EXISTING SYSTEMS IS REQUIRED DURING DEMOLITION, COORDINATE SHUTDOWN TIME AND DURATION WITH OWNER TO MINIMIZE DOWNTIME. NOTIFY OWNER SEVEN (7) DAYS PRIOR TO INTERRUPTION OF SERVICE.
- CONTRACTOR SHALL CEASE WORK AND IMMEDIATELY NOTIFY THE OWNER SHOULD ANY HAZARDOUS MATERIALS BE ENCOUNTERED DURING THE PERFORMANCE OF THE WORK.
- REMOVAL, RECOVERY, RECYCLING, AND DISPOSAL OF REFRIGERANT, CONTAINED IN ANY EQUIPMENT TO BE REMOVED, SHALL BE PERFORMED IN STRICT ACCORDANCE WITH CURRENT EPA GUIDELINES.

DEMOLITION GENERAL NOTES A25

GENERAL MECHANICAL NOTES:

- COORDINATE THE INSTALLATION OF THE MECHANICAL SYSTEMS WITH OTHER TRADES TO ENSURE A NEAT AND ORDERLY INSTALLATION. INSTALL DUCTWORK AND PIPING AS TIGHT TO STRUCTURE AS POSSIBLE. COORDINATE WITH OTHER TRADES TO AVOID CONFLICTS. COORDINATION OF DUCTWORK AND PIPING TO AVOID CONFLICTS WITH ELECTRICAL PANELS, LIGHTING FIXTURES, ETC. ANY MODIFICATIONS REQUIRED DUE TO LACK OF COORDINATION WILL BE THE RESPONSIBILITY OF THE CONTRACTOR AT NO EXTRA COST TO THE OWNER.
- DURING INSTALLATION OF NEW WORK, AVOID DAMAGING EXISTING SURFACES AND EQUIPMENT TO REMAIN. REPAIR DAMAGE CAUSED DURING CONSTRUCTION AT NO EXTRA COST TO THE OWNER.
- PROVIDE TEMPORARY BARRIERS TO CONTAIN DUST AND DEBRIS RESULTING FROM THE PERFORMANCE OF THE WORK TO THE AREA WHERE WORK IS BEING PERFORMED.
- ALL MECHANICAL EQUIPMENT SHOWN ON THE MECHANICAL PLANS SHALL BE PROVIDED BY THE MECHANICAL CONTRACTOR UNLESS OTHERWISE NOTED.
- NEW MECHANICAL EQUIPMENT AND DUCTWORK ARE SHOWN AT APPROXIMATE LOCATIONS. FIELD MEASURE FINAL DUCTWORK LOCATIONS PRIOR TO FABRICATION AND MAKE ADJUSTMENTS AS REQUIRED TO FIT THE DUCTWORK AND PIPING WITHIN THE AVAILABLE SPACE. VERIFY THAT FINAL EQUIPMENT LOCATIONS MEET MANUFACTURER'S RECOMMENDATIONS REGARDING SERVICE CLEARANCE AND PROPER AIRFLOW CLEARANCE AROUND EQUIPMENT.
- REFER TO ARCHITECTURAL DRAWINGS FOR RELATED CONSTRUCTION DETAILS AS APPLICABLE TO THE HVAC SYSTEM. VERIFY CHASES AND PENETRATIONS SHOWN ON ARCHITECTURAL DRAWINGS THAT ARE INTENDED FOR DUCTWORK AND PIPING MEET REQUIREMENTS.
- COORDINATE LOCATION OF ROOF MOUNTED HVAC EQUIPMENT THROUGH ROOF PENETRATIONS WITH THE ARCHITECTURAL AND STRUCTURAL DRAWINGS.
- INDOOR AIR QUALITY MEASURES: PROTECT INSIDE OF (INSTALLED AND DELIVERED) DUCTWORK AND HVAC UNITS FROM EXPOSURE TO DIRT, PAINT AND MOISTURE. REPLACE INSULATION THAT IS DAMAGED AT ANY TIME DURING CONSTRUCTION, DRYING THE INSULATION TO A STABLE STATE. SEAL ANY TEARS OR JOINTS OF INTERNAL FIBERGLASS INSULATION TO PREVENT AIR FROM CEILING/RETURN AIR PLENUM INCLUDING DUCTS. INDEPENDENT, PROFESSIONAL DUCT CLEANING COMPANY SHALL CLEAN ALL DUCTWORK CONNECTED TO FILTERS THAT WILL OPERATE DURING THE CONSTRUCTION PERIOD AFTER NEW FILTERS ARE INSTALLED AND PRIOR TO TURNING SYSTEM OVER TO THE OWNER. THE INTERNAL SPACES ASSOCIATED WITH ANY HVAC UNITS THAT WERE OPERATED SHALL ALSO BE CLEANED.
- INSTALL DUCTWORK AND PIPING PARALLEL TO BUILDING COLUMN LINES UNLESS OTHERWISE SHOWN OR NOTED.
- OVERHEAD HANGERS AND SUPPORTS FOR EQUIPMENT, DUCTWORK AND PIPING SHALL BE FASTENED TO BUILDING JOISTS OR BEAMS. DO NOT ATTACH HANGERS AND SUPPORTS TO THE ABOVE FLOOR SLAB OR ROOF EXCEPT WHERE CONCRETE INSERTS IN CONCRETE SLABS ARE ALLOWED BY THE SPECIFICATIONS.
- COORDINATE LOCATION OF EQUIPMENT SUPPORTS WITH LOCATION OF EQUIPMENT ACCESS PANELS/DOORS TO ENABLE SERVICE OF EQUIPMENT AND/OR FILTER REPLACEMENT.
- SEAL PENETRATIONS THROUGH THE BUILDING COMPONENTS IN ACCORDANCE WITH THE CONTRACT SPECIFICATIONS. FIREPROOF PENETRATIONS THROUGH FIRE-RATED COMPONENTS IN ACCORDANCE WITH U.L. REQUIREMENTS.
- COORDINATE THE EXACT MOUNTING SIZE AND FRAME TYPE OF DIFFUSERS, REGISTERS AND GRILLES WITH THE SUPPLIER TO MEET THE CEILING, WALL AND DUCT INSTALLATION REQUIREMENTS.
- ADJUST LOCATION OF CEILING DIFFUSERS, REGISTERS AND GRILLES AS REQUIRED TO ACCOMMODATE FINAL CEILING GRID AND LIGHT FIXTURE LOCATIONS.
- LOCATIONS TO SET THERMISTERS AT LOCATIONS SHOWN ON PLANS. VERIFY EXACT LOCATION WITH ARCHITECT PRIOR TO INSTALLATION. INSTALL DEVICES WITH TOP OF DEVICE MAXIMUM 48" ABOVE FINISH FLOOR UNLESS NOTED OTHERWISE ON PLANS. PROVIDE INSULATION PACKING FOR THERMISTERS MOUNTED TO INTERIOR BUILDING WALLS. USE WIRING IN CONDUIT PROVIDED BY DIVISION 26. A MINIMUM PROVIDE CONDUIT THROUGH THE WALL FROM THE JUNCTION BOX TO 6" ABOVE THE CEILING.
- COORDINATE THE LOCATION AND ELEVATION OF WALL-MOUNTED DEVICES WITH REPRESENTATION BOARDS, DISPLAY CABINETS, SHELVES OR OTHER COMPONENTS SHOWN ON THE ARCHITECTURAL DRAWINGS THAT ARE TO BE INSTALLED UNDER OTHER DIVISIONS. CONTRACTOR WILL NOT BE REIMBURSED FOR RELOCATION OF WALL-MOUNTED DEVICES CAUSED BY A LACK OF COORDINATION.
- PROVIDE A MANUAL BALANCING DAMPER IN EACH BRANCH DUCT TAKEOFF FROM MAIN SUPPLY, RETURN, OUTDOOR AND EXHAUST AIR DUCTS.
- PROVIDE PREFABRICATED 45 DEGREE, HIGH EFFICIENCY, RECTANGULAR/ROUND BRANCH DUCT TAKEOFF FITTING WITH MANUAL BALANCING DAMPER AND LOCKING QUADRANT FOR BRANCH DUCT CONNECTIONS AND TAKE-OFFS TO INDIVIDUAL DIFFUSERS, REGISTERS AND GRILLES.
- BRANCH DUCTWORK TO AIR OUTLETS SHALL BE SAME SIZE AS OUTLET NECK SIZE UNLESS OTHERWISE NOTED.
- REFER TO SPECIFICATIONS FOR DUCTWORK AND PIPING INSULATION REQUIREMENTS. DUCT SIZES ON MECHANICAL PLANS INDICATE CLEAR INSIDE AIRFLOW DIMENSIONS. INCREASE SHEET METAL SIZES ACCORDINGLY TO ACCOUNT FOR THICKNESS OF DUCT LINER.
- FLEXIBLE DUCTWORK SHALL NOT EXCEED 5'-0" IN LENGTH AND SHALL BE INSTALLED AND SUPPORTED TO AVOID SHARP BENDS AND SAGGING. REFER TO SPECIFICATIONS FOR ADDITIONAL REQUIREMENTS.
- PROVIDE A NEW SET OF AIR FILTERS IN UNITS PRIOR TO TESTING, ADJUSTING AND BALANCING AND BEFORE TURNING SYSTEM(S) OVER TO OWNER.

MECHANICAL CONTRACTOR SHALL OBTAIN THERMOSTATS AND TEMPERATURE SENSORS AS INDICATED IN NOTES DIRECTLY FROM THE SPRINT BAS MANAGEMENT TEAM AT NO COST. THE CONTRACTOR'S BID SHALL INCLUDE LABOR AND INSTALLATION ONLY. COORDINATE INSTALLATION AND TROUBLESHOOTING OF THE PROLIPHIX INTERNET MANAGED THERMOSTAT DIRECTLY WITH THE CBRE BAS MANAGEMENT TEAM.
 EMAIL: CBREBASMANAGEMENT@SPRINT.COM

GENERAL CONTRACTOR SHALL INCLUDE IN THEIR BID A COST FOR A 3RD PARTY TEST AND BALANCE OF THE HVAC SYSTEM.

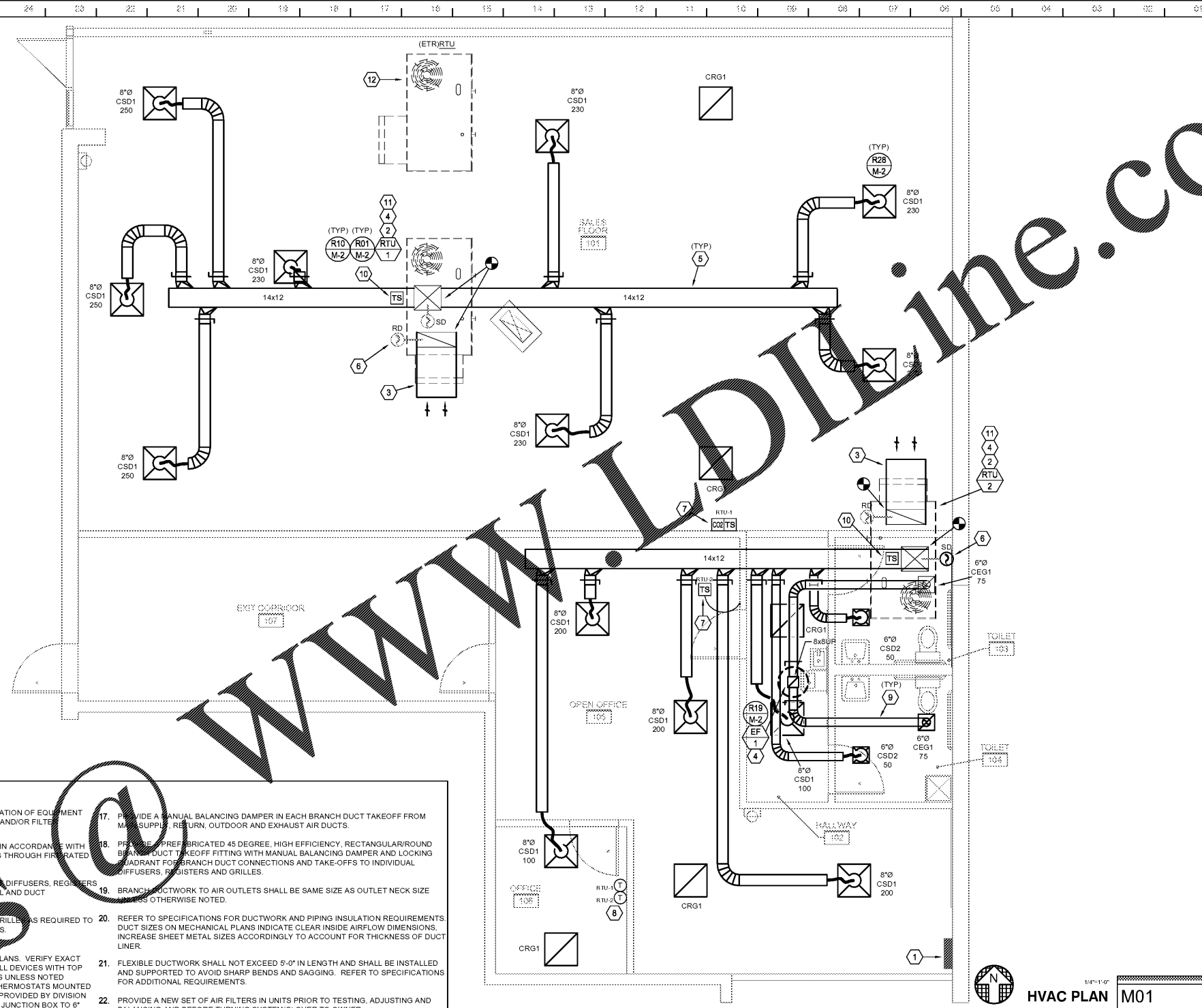
HVAC EQUIPMENT IS A LONG LEAD TIME ITEM. NATIONAL ACCOUNTS PRICING, ORDERING INFORMATION, AND LEAD TIME SHALL BE OBTAINED FROM DAVID EBNER AT LENOX. PHONE # 1-812-860-5933 OR DAVE.EBNER@LENOXIND.COM. ADDITIONAL COSTS INCURRED DUE TO FAILURE TO ADEQUATELY COORDINATE LEAD TIMES SHALL BE THE RESPONSIBILITY OF THE CONTRACTOR.

MECHANICAL GENERAL NOTES A11

MECHANICAL PLAN NOTES:

- DO NOT ROUTE DUCTWORK, PIPING, ETC. OVER ELECTRICAL PANEL BOARDS. IN THE EVENT THAT ROUTING OVER AN ELECTRICAL PANEL IS INEVITABLE, ROUTING MUST OCCUR A MINIMUM OF 6" ABOVE PANEL. PROVIDE A DRIP PAN BENEATH DUCTWORK TO PREVENT ANY CONDENSATION FROM COMING IN CONTACT WITH ELECTRICAL PANEL. RELOCATE ANY EXISTING PIPING OR DUCTWORK WHICH IS ROUTED OVER THE PANELS (AS NECESSARY TO MEET CODE REQUIREMENTS).
- NEW ROOFTOP UNIT PROVIDED BY LANDLORD UNDER SHELL IMPROVEMENT PHASE. EQUIPMENT NOT PRESENT AT TIME OF DESIGN UNIT CAPACITY IS SPECIFIED PER LEASE REQUIREMENTS FOR LANDLORD REFERENCE.
- ROUTE SHEET METAL RETURN AIR PLENUM AS SHOWN. PLENUM SHALL BE SIZED FULL SIZE OF EXISTING RETURN AIR INLET AND SHALL CONNECT TO EXISTING UNIT. PROVIDE DUCT LINER IN RETURN AIR DUCTWORK FOR SOUND ATTENUATION ONLY.
- LANDLORD APPROVED ROOFING CONTRACTOR SHALL BE RESPONSIBLE FOR MAKING ALL CUTS THROUGH THE EXISTING ROOF OR TO MAKE ALTERATIONS TO EXISTING OPENINGS, OR CURB FLASHING AT GENERAL CONTRACTOR'S EXPENSE. COORDINATE WITH GENERAL CONTRACTOR.
- ROUTE DUCTWORK AS TIGHT TO STRUCTURE AS POSSIBLE.
- IF NOT EXISTING, DIVISION 23 CONTRACTOR SHALL FURNISH AND INSTALL AND DIVISION 26 CONTRACTOR SHALL WIRE SMOKE DETECTORS IN THE RETURN AND SUPPLY AIR DUCTWORK AT LOCATIONS SHOWN. COORDINATE WITH DIVISION 26 CONTRACTOR.
- MECHANICAL CONTRACTOR SHALL OBTAIN TEMPERATURE SENSOR FROM SPRINT BAS MANAGEMENT AND INSTALL IN INDICATED LOCATION. MECHANICAL CONTRACTOR SHALL PROVIDE CO2 SENSOR (WHEN INCLUDED) AND INSTALL IN INDICATED LOCATION. MOUNT SENSORS AT 54" A.F.F. COORDINATE FINAL LOCATION OF SENSORS WITH ARCHITECT PRIOR TO INSTALLATION OF BACKING OR WIRING. SENSORS SHALL BE COMPATIBLE WITH THE PROLIPHIX THERMOSTAT AND INTERLOCKED WITH PROLIPHIX EMS IN ACCORDANCE WITH SPRINT STANDARDS.
- MECHANICAL CONTRACTOR SHALL OBTAIN THE PROLIPHIX INTERNET MANAGED THERMOSTAT FROM SPRINT BAS MANAGEMENT AND INSTALL IN INDICATED LOCATION. MOUNTED AT 48" AFF. COORDINATE FINAL LOCATION OF THERMOSTAT WITH ARCHITECT PRIOR TO INSTALLATION OF THERMOSTAT BACKING OR WIRING.
- ROUTE NEW EXHAUST AIR DUCTWORK TO ROOF MOUNTED EXHAUST FAN. COORDINATE EXACT ROUTING WITH STRUCTURE AND OTHER OBSTACLES AND ADJUST ROUTING TO MATCH.
- MECHANICAL CONTRACTOR SHALL OBTAIN DUCT MOUNTED TEMPERATURE SENSOR FROM SPRINT BAS MANAGEMENT AND INSTALL AT LOCATION INDICATED FOR MONITORING ONLY. TEMPERATURE SENSOR SHALL BE COMPATIBLE WITH THE PROLIPHIX THERMOSTAT. INTERLOCK SENSOR WITH PROLIPHIX EMS.
- FOR TEMPORARY CONDITIONING OF THE SPACE PRIOR TO THE INSTALLATION OF SPRINT'S NETWORK SWITCH, THE MECHANICAL CONTRACTOR SHALL WIRE THE PROLIPHIX THERMOSTAT DIRECTLY TO THE ROOFTOP UNIT. CONTRACTOR SHALL PROVIDE AN ADDITIONAL PLENUM-RATED CATEGORY 3E CABLE FOR CONNECTION OF THERMOSTAT TO THE NETWORK SWITCH LOCATED AT THE LAN RACK. TIE OFF CABLE WITH AN ADDITIONAL 3' OF CABLE AT THE THERMOSTAT AND AN ADDITIONAL 15' OF CABLE AT THE LAN RACK.
- PER SITE INVESTIGATION RTU SERVES ADJACENT SPACE. COORDINATE WITH EXISTING DUCTWORK AND INFORM LANDLORD OF ANY DEFICIENCIES IN THE DUCT SYSTEM FROM RTU TO DEVISING WALL.

MECHANICAL KEY NOTES A01



HVAC PLAN M01

HVAC PLAN

PROJECT NUMBER: 1850001011
 SHEET NO: M-1
 DATE: JANUARY 5, 2017
 DRAWN BY: JLD
 CHECKED BY: JLD
 PROJECT: SPRINT - 1641 WHITEHAVEN PLAZA

J:\Lenexa\Programs\Bentley\Bentley\SPRINT - MASTER\SPRINT - MASTER\010111.dwg, Plot: 1/6/2018 12:44:08 PM, jld\dwg\aggr: 1:1
 ANDREW S. KNIGHT