



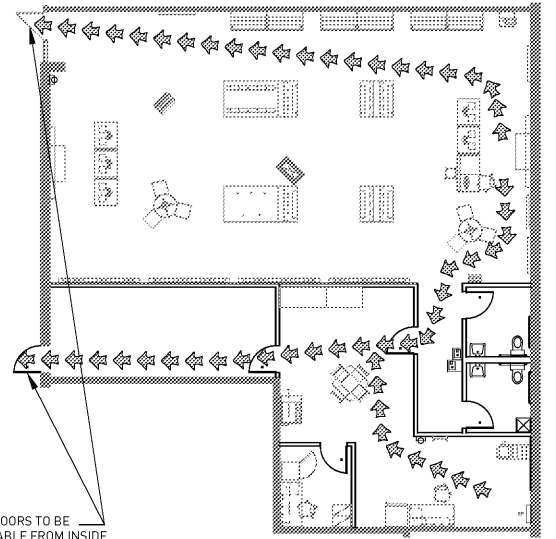
#1641 WHITEHAVEN PLAZA  
4088 ELVIS PRESLEY BOULEVARD, SUITE 104  
MEMPHIS, TENNESSEE 38116

REFERENCE CODES	OCCUPANT LOAD (CHAPTER 10)	ACCESSIBILITY (CHAPTER 11)
2009 INTERNATIONAL BUILDING CODE 2008 NATIONAL ELECTRIC CODE 2009 INTERNATIONAL PLUMBING CODE 2009 INTERNATIONAL MECHANICAL CODE 2009 INTERNATIONAL ENERGY CONSERVATION CODE ALL WITH LOCAL AMENDMENTS	SECTION 1004 TOTAL USEABLE SQ. FT. = 2,378 SQ. FT. SECTION 1004 TABLE 1004.1.2 MERCANTILE GRADE FLOOR SALES AREAS/30-> 1622/30= 55 OCCUPANTS OFFICE AREAS/100-> 756/100=8 OCCUPANTS TOTAL => 55 + 8 = 63 OCCUPANTS	THESE PLANS COMPLY WITH ALL OF THE PROVISIONS SET FORTH BY CHAPTER 11 OF THE 2009 IBC AND W/ "THE AMERICANS WITH DISABILITIES ACT" A:
<b>OCCUPANCY CLASSIFICATION</b> (CHAPTER 3) SECTION 309 MERCANTILE GROUP M	SECTION 1021 TABLE 1021.2(2) TOTAL # EXITS REQUIRED = 2 EXITS PROVIDED = 2	
<b>TYPE OF CONSTRUCTION</b> (CHAPTER 6) SECTION 601 TABLE 601 TYPE II-B	SECTION 1005 EGRESS WIDTH PER PERSON 10.2 W/O AUTOMATIC SPRINKLER SYSTEM 0.2 X 63 OCCUPANTS = 12.6" => 48" PROVIDED	
<b>FIRE PROTECTION SYSTEMS</b> BUILDING DOES NOT HAVE A SPRINKLER SYSTEM	SECTION 1016 TABLE 1016.2 MAXIMUM TRAVEL DISTANCE => 62'-6" 200' MAX. (W/O AUTOMATIC SPRINKLER SYSTEM) 250' MAX. (WITH AUTOMATIC SPRINKLER SYSTEM)	
	SECTION 1023.2 WIDTH OF EXIT PASSAGEWAY => 60" MINIMUM WIDTH NOT LESS THAN 36" ( < 50 OCCUPANTS ) WIDTH NOT LESS THAN 44" ( > 50 OCCUPANTS )	



2000 SHAWNEE MISSION PARKWAY  
STE 100 MISSION WOODS, KS 66205  
TEL 816 502 1500 FAX 816 842 1878

**CODE INFORMATION** U01



**LEGEND**

EGRESS EXTENDS TO PUBLIC RIGHT OF WAY.	↑
REQUIRED MINIMUM EGRESS WIDTH.	↑
DIRECTION OF EGRESS TRAVEL.	↑

**EGRESS PLAN** J27

**NOTES:**

A. GC TERMINATES ELECTRICAL, CABLE VENDOR TERMINATES DATA; GC INSTALLS BOTH DATA AND ELECTRICAL WIRE IN THE FLOOR TRENCH.

B. GC RESPONSIBLE FOR COORDINATING THE SCHEDULE, DELIVERY, AND INSTALLATION OF ALL VENDOR PROVIDED ITEMS. GC IS ADDITIONALLY RESPONSIBLE FOR COORDINATING ALL REVIEW OF PLANS WITH ANY AND ALL SPRINT VENDORS.

C. SECURITY VENDOR MUST COORDINATE FINAL SECURITY PLANS WITH SPRINT AND COORDINATE PHASING OF INSTALLATION WITH GC. REMOVE ANY AND ALL ABANDONED WIRE, DEVICES, OUTLET BOXES, AND EQUIPMENT.

D. CABLING VENDOR MUST COORDINATE FINAL DROP COUNTS AND LOCATIONS WITH SPRINT. CABLING VENDOR TO COORDINATE INSTALLATION WITH GC.

E. MUSIC VENDOR IS RESPONSIBLE FOR COMPLETING NEW MUSIC SYSTEM. MUSIC VENDOR TO COORDINATE INSTALLATION WITH GC.

F. EXTERIOR SIGNAGE VENDOR IS RESPONSIBLE FOR COORDINATING THE PERMITTING APPROVAL, DELIVERY, AND INSTALLATION OF THE EXTERIOR SIGNAGE, AND ELECTRICAL CONNECTIONS. THE SIGNAGE VENDOR SHALL COORDINATE THE SIGNAGE INSTALLATION WITH THE GC.

H. GC TO PROVIDE COMPLETE PROFESSIONAL CLEANING OF THE ENTIRE STORE AT THE END OF PROJECT. ALSO REPLACE HVAC FILTERS UPON THE COMPLETION OF PHASE OF CONSTRUCTION AND AT THE END OF THE PROJECT.

I. THE SAFE, SECURITY CABINET, AND APC MAY BE BOLTED TO THE FLOOR BY SPRINT OR IT MAY BE THE GC'S RESPONSIBILITY. COORDINATE WITH SPRINT'S PROJECT MANAGER.

J. GC MUST INCLUDE IN BID, ONE (1) 40 CUBIC-YARD DUMPSTER FOR USE BY SPRINT VENDOR TO DISPOSE OF PACKAGING MATERIALS, ETC.

K. GC TO ENFORCE ALL WASTE, HAZARDOUS, AND NON-HAZARDOUS WASTE DISPOSAL AND RECYCLING IN ACCORDANCE WITH ALL APPLICABLE CODES INCLUDING LOCAL, STATE, AND NATIONAL LAWS AND REGULATIONS.

L. GC INCLUDE COST OF ALL SUB-CONTRACTOR PERMIT FEES IN BID. VERIFY WITH ARCHITECT IF ANY ADDITIONAL PERMIT AND PLAN REVIEW FEES SHOULD BE INCLUDED IN BID.

M. GC TO VERIFY EXISTING CONDITIONS AND NOTIFY PM OF ANY DISCREPANCIES.

N. GC MAY OBTAIN CABLING QUOTES FROM ANY QUALIFIED VENDORS. OPTIONAL CABLE VENDORS FOR QUOTES:  
ICAS - BRAD BENSON (bbenson@cascorp.com) 913-485-7160  
ROYAL - JAMES WEST (jwest@royalsvcs.com) 913-387-2877

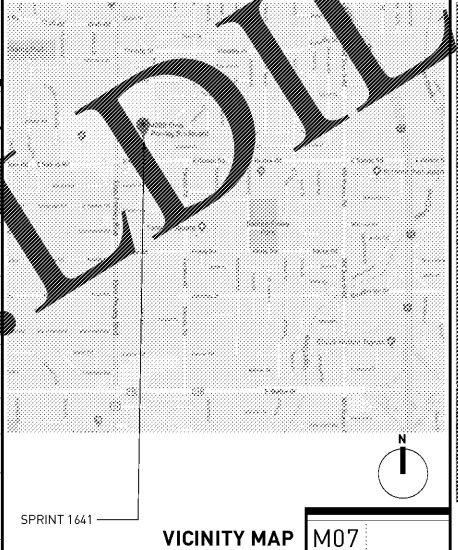
**GENERAL NOTES** A27

FORMAT: F9 CONVENTIONAL BUILD  
NEW SPRINT STORE SUSTAINABLE DESIGN TENANT BUILDOUT, IN AN EXISTING BUILDING. WORK WILL CONSIST OF BUILDING NEW SALES FLOOR AND BACK OF HOUSE. NEW WORK WILL CONSIST OF DISPLAY FIXTURES, CEILING, PLUMBING FIXTURES, MECHANICAL DUCTWORK TO DIFFUSERS, INTERIOR PARTITIONS, FLOOR FINISHES, OUTLETS AND NEW LOCATIONS OF ELECTRICAL PANELS

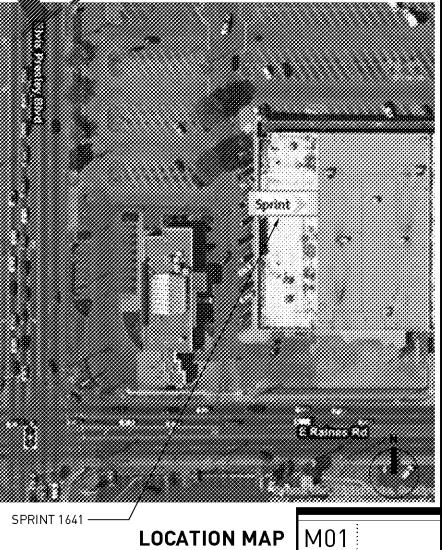
**PROJECT DESCRIPTION** R13

CATEGORY	PURCHASED BY	INSTALLED BY	VENDOR	VENDOR CONTACT INFO
ALARM, SECURITY, AND SECURITY CAMERA	SPRINT	SPRINT VENDOR	SECURITAS ELECTRONIC SECURITY, INC.	TRACY DANIEL M: 309-215-1477 brian.daniel@securitas.com
APC MACHINES	SPRINT	SPRINT VENDOR	NCR COOPERATION (SPRINT COORDINATOR)	CHRIS PARKER O: 913-844-8244 Chris.Parker@sprint.com
COPIER, FAX, PRINTER	SPRINT	SPRINT VENDOR	PERFECT OUTPUT OF KANSAS CITY, LLC	DAVID VARTZ O: 913-431-5255 913-973-735 David.Vartz@sprint.com
DISPLAYS, INTERIOR SIGNAGE, FILING CABINETS	SPRINT	GENERAL CONTRACTOR	INSIGNIA	LENDISA PHILLIPS O: 816-921-5740 EXT. 113 lphillips@insignia.com
DOORS, FRAMES, HARDWARE, ETC	GENERAL CONTRACTOR	GENERAL CONTRACTOR	DISCRETION	BY DISCRETION
EMS (ENERGY MANAGEMENT SYSTEM)	SPRINT	GENERAL CONTRACTOR	CBRE BAS MANAGEMENT	CBRE BAS MANAGEMENT TEAM CBREBASManagement@sprint.com
EXTERIOR SIGN NOTE: ELECTRIC BY GC	SPRINT	SPRINT VENDOR	INSTAKEY SIGN CRAFTERS (AMERICAN SIGN CRAFTERS)	SARA MIRISOLA O: 561-547-3760 x252 M: 561-891-3535 smirisola@interstatesigncrafters.com
FIXTURES & FURNITURE	SPRINT	SPRINT VENDOR	VIRA MANUFACTURING INC.	MARK PRZYBYL KOWSKI M: (973) 207-4103 x108 mprzybylkowski@viranet.com
FLOORING (VCT, ADHESIVE) *NOTE: WALL BASE BY SPRINT	GENERAL CONTRACTOR	GENERAL CONTRACTOR	GC'S DISCRETION	GC'S DISCRETION
FLOORING (SALES AREA - LVT, CARPET, ADHESIVE & RELATED MATERIALS)	SPRINT	GENERAL CONTRACTOR	CYNTHIA AYRES & COMPANY	VIVIAN PHILLIPS O: 913-383-2100 M: 913-481-5471 vivian.phillips@caayres.net
INSTAKEY	GENERAL CONTRACTOR	SPRINT VENDOR	INSTAKEY SECURITY SYSTEMS	JASON KRAMER O: 303-761-9999 x121 sprint@instakey.com
LIGHTING	GENERAL CONTRACTOR	GENERAL CONTRACTOR	FSG / AMERICAN LIGHT	MARGARET ROSE RICHARDSON O: 214-351-6266 x10182 margaret.richardson@fsg.com
MUSIC	SPRINT	SPRINT VENDOR	RETAIL RADIO	DEBBIE MERCER O: 913-794-6580 Debbie.L.Mercer@sprint.com
SAFE CABINET & SECURITY CABINET	SPRINT	SPRINT VENDOR	BLUEDOT	VICKIE THOMAS O: (909) 525-4732 sales@bluedotsafes.com vthomas@bluedotsafes.com
SECURITY SHUTTERS	SPRINT	SPRINT VENDOR	QMI SECURITY SOLUTIONS	JIM DALUGA 800-446-2500 x1038 jdalugajr@qmiusa.com
SHELVING	GENERAL CONTRACTOR	GENERAL CONTRACTOR	CF CLARK ASSOCIATES, INC	GREG PATON O: 630-493-9860 greg@cf-clark.com
SHOPPERTRAK	SPRINT	SPRINT VENDOR	SHOPPERTRAK	CONSTRUCTION PROJECT MANAGER
UNDER CARPET FLAT WIRING	GENERAL CONTRACTOR	GENERAL CONTRACTOR	ELECTRONICS SUPPLY COMPANY	BILL NEUSTADT O: 816-931-0250 billn@esck.com

**RESPONSIBILITY SCHEDULE** A13



**VICINITY MAP** M07



**LOCATION MAP** M01

- BUILDING IS NOT SPRINKLERED.
- PROVIDE OCCUPANCY SIGNS CONFORMING TO APPLICABLE BUILDING CODE REQUIREMENTS.
- PROVIDE ADDITIONAL EXIT SIGNS AND FIRE EXTINGUISHERS IN TYPE, NUMBER AND LOCATION AS DIRECTED BY THE FIRE DEPARTMENT FIELD INSPECTOR.
- GC SHALL VERIFY, COORDINATE AND/OR INSTALL ANY SMOKE DETECTION AND/OR FIRE ALARM CONNECTORS AS REQUIRED PER GOVERNING MUNICIPALITY.
- ANY REQUIRED FIRE DAMPER ASSEMBLIES INCLUDING SLEEVES AND INSTALLATION PROCEDURES SHALL BE APPROVED BY THE BUILDING INSPECTOR PRIOR TO INSTALLATION.
- ALL REQUIRED PERMITS AND APPROVALS MUST BE OBTAINED FROM THE FIRE DEPARTMENT BEFORE BUILDINGS ARE OCCUPIED.
- DURING CONSTRUCTION, THE GC IS TO PROVIDE A PORTABLE FIRE EXTINGUISHER WITH A RATING OF NOT LESS THAN 2-A (NFPA 101) WITHIN 75 FOOT TRAVEL DISTANCE TO ALL PORTIONS OF THE BUILDING ON EACH FLOOR.
- CONTACT OPERATING MANAGER REGARDING FIRE ALARM REQUIREMENTS AND INSTALLATION. INSTALLATION AND DEVICES AT TENANT'S EXPENSE. TENANTS SPACE MUST MEET A.D.A. FIRE ALARM REQUIREMENTS.

**FIRE DEPARTMENT NOTES** H01

**ARCHITECT**  
SKIP HYMER  
REES MASHIONIS TURLEY ARCHITECTURE  
2000 SHAWNEE MISSION PARKWAY  
STE 100 MISSION WOODS, KS 66205  
816.502.1515  
816.842.1878 f  
skip@rmta.biz

**MEP ENGINEER**  
JARED WAGNER  
HENDERSON ENGINEERS, INC.  
8345 LENEXA DRIVE, SUITE 300  
LENEXA, KS 66214  
913.742.5407  
jared.wagner@hei-eng.com

**OWNER**  
SPRINT  
6450 SPRINT PARKWAY  
OVERLAND PARK, KS 66251

**PROJECT MANAGER**  
SCOTT POTTER  
ECONOMIC PROJECT SOLUTIONS, INC.  
866.246.1110 x102  
spotter@economicprojects.com

**CONTACT INFORMATION** A07

- |            |                                       |
|------------|---------------------------------------|
| <b>A00</b> | COVER SHEET                           |
| <b>A01</b> | SPECIFICATIONS                        |
| <b>A02</b> | SPECIFICATIONS                        |
| <b>A03</b> | SPECIFICATIONS                        |
| <b>A11</b> | FLOOR PLAN                            |
| <b>A12</b> | REFLECTED CEILING PLAN                |
| <b>A13</b> | FINISH/FIXTURE PLAN                   |
| <b>A21</b> | DETAILS                               |
| <b>A22</b> | INTERIOR ELEVATIONS                   |
| <b>M1</b>  | HVAC PLAN                             |
| <b>M2</b>  | MECHANICAL DETAILS                    |
| <b>M3</b>  | MECHANICAL SCHEDULES                  |
| <b>M4</b>  | MECHANICAL SPECIFICATIONS             |
| <b>M5</b>  | MECHANICAL SPECIFICATIONS             |
| <b>P1</b>  | PLUMBING PLAN                         |
| <b>P2</b>  | PLUMBING DETAILS AND RISER DIAGRAMS   |
| <b>P3</b>  | PLUMBING SCHEDULES                    |
| <b>P4</b>  | PLUMBING SPECIFICATIONS               |
| <b>P5</b>  | PLUMBING SPECIFICATIONS               |
| <b>E1</b>  | ELECTRICAL LIGHTING PLAN              |
| <b>E2</b>  | ELECTRICAL POWER PLAN                 |
| <b>E3</b>  | ELECTRICAL COMMUNICATION PLAN         |
| <b>E4</b>  | ELECTRICAL RISER, SCHEDULES & DETAILS |
| <b>E5</b>  | ELECTRICAL LEGEND & DETAILS           |
| <b>E6</b>  | ELECTRICAL SPECIFICATIONS             |
| <b>E7</b>  | ELECTRICAL SPECIFICATIONS             |

**SHEET INDEX** A01

**Sprint**  
#1641 WHITEHAVEN PLAZA  
4088 ELVIS PRESLEY BLVD.  
SUITE 104  
MEMPHIS, TENNESSEE 38116

MATTHEW MASHIONIS - ARCHITECT  
TENNESSEE # 102603

I have prepared the drawings and assume responsibility for the sheets numbered with an "A" prefix for the project named below.  
Other drawings and specifications attached for the above-mentioned project have been by and are the responsibility of the licensed engineer whose stamp and firm appear on that sheet.  
The architect is not responsible for the design of the mechanical, electrical, plumbing, civil, landscaping, structural, signage (not specified), fire suppression systems, and does not take responsibility for the compliance of these areas with the laws of the above governmental entities. The architect is not responsible for materials, components or equipment, as well as the method in which they are installed on the project by others. The architect is not held or responsible for construction, during construction or upon completion of construction. The architect is not responsible for improper operation due to faulty installation or product failure during construction or after completion of construction when operation has begun by the landlord or tenant.  
The licensed professional whose stamp appears on sheets other than those specifically noted above shall be responsible for those items in paragraph three.

DATE	DESCRIPTION

SHEET TITLE:  
**COVER SHEET**

PROJECT NUMBER	2017014066
SHEET NUMBER	RM
DATE CHECKED	RB
DATE	JANUARY 5, 2017

SHEET NUMBER:  
**A00**