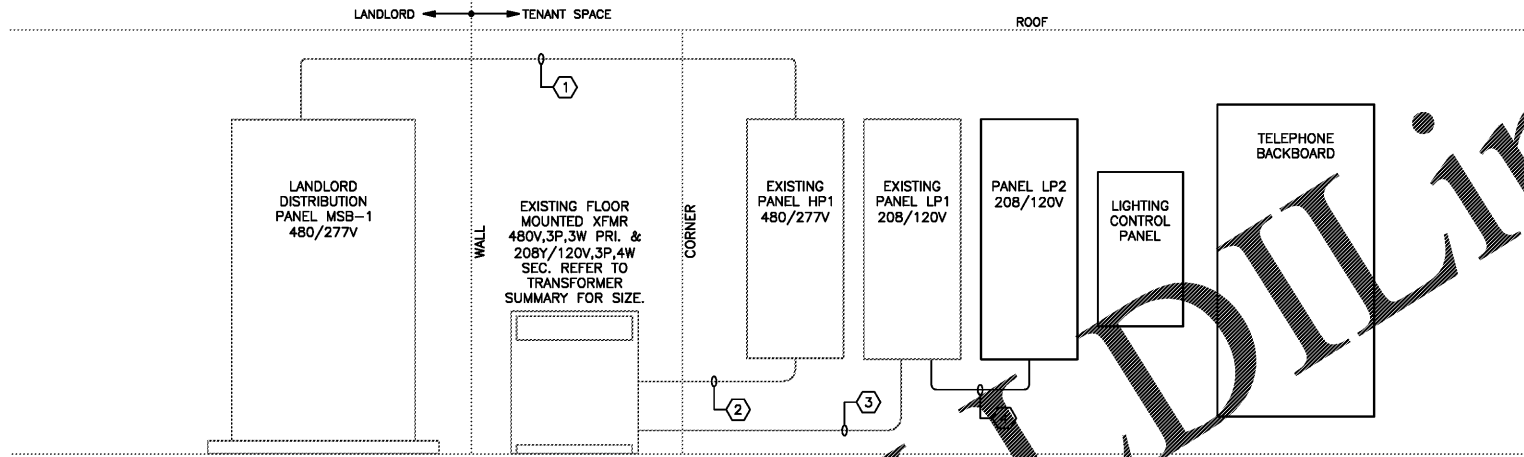


POTTERY BARN ELECTRICAL LOAD SUMMARY						
DESCRIPTION	ACTUAL CONNECTED KVA	DEMAND FACTOR	ACTUAL DEMAND KVA	N.E.C. CONNECTED KVA	N.E.C. DEMAND FACTOR	N.E.C. DEMAND KVA
TRACK LIGHTING	6.1	1.25	7.62	100 ****	1.25	15
GENERAL LIGHTING	6.03	1.25	7.53	12 KVA	1.25	7.53
SHOW WINDOW LIGHTING ALLOW	-----	***	-----	***	0 FT 200W/LF x 1.25	0
GEN. PURPOSE RECEPTACLE	26.5	1.0 < 10KVA 0.5 > 10KVA	18.2	26.5	1.0 < 10KVA 0.5 > 10KVA	18.2
MOTOR(S)	0	1.0 + 25% LARGEST	0	0	1.0 + 25% LARGEST	0
FIXED ELECTRIC SPACE HTG.	74.6 *	1.0	74.6 *	74.6 *	1.0	74.6 *
AIR CONDITIONING EQUIPMENT	72.2 *	1.0 + 25% LARGEST **	72.2 *	72.2 *	1.0 + 25% LARGEST **	72.2 *
ELECTRIC WATER HEATER	1.5	1.25	1.88	1.5	1.25	1.88
MISCELLANEOUS LOADS	6	1.0	6	6	1.0	6
TOTAL	193		188	287		196

NOTES: * USE GREATER VALUE OF THE TWO CATEGORIES WHERE LOADS ARE NON-CONCURRENT.
 ** 125% OF LARGEST COMPRESSOR MOTOR IN SYSTEM. APPLIES TO ONLY ONE UNIT.
 *** ACTUAL SHOW WINDOW LIGHTING IS INCLUDED IN TRACK AND GENERAL LIGHTING SECTIONS.
 **** TOTAL SUM OF CURRENT LIMITERS IN AMPS

MINIMUM FEEDER = $\frac{196 \text{ KVA} \times 1000}{480 \times 1.73} = 235 \text{ A}$
 ELECTRICAL SERVICE AMPACITY = 400 A @ 480V, 3 PH



- KEYED NOTES**
- ① EXISTING LANDLORD INSTALLED 4-500KCMIL, 1 #3 GND., IN 3" C.
 - ② EXISTING LANDLORD INSTALLED 3 #1, 1 #6 GND., IN 1-1/2" C.
 - ③ EXISTING LANDLORD INSTALLED 4 #4/0, 1 #2 GND., IN 2-1/2" C.
 - ④ 4 #1, 1 #8 GND., IN 1-1/2" C.

OWNER:
WILLIAMS-SONOMA, INC.
 3250 Van Ness Avenue
 San Francisco, CA 94109
 T 415 616 8602
 F 415 439 8164
 www.williams-sonomainc.com

EEA
 EEA Consulting Engineers
 6615 Vaught Ranch Road, Suite 100
 Austin, Texas 78730-2314 USA
 512.744.4400 main 512.744.4444 fax
 www.eeace.com

State of Registration VIRGINIA
 Firm Registration No. 0407 004734
 EEA Project No. 20166524

DRAWN BY: BMW
 CHECKED BY: SAH

BID DOCUMENT ONLY

Not Intended for Construction or Permit.
 This document is released under the authority of:
 Registrant's Name: SARA A. HAMILL
 Serial No. 0402052431

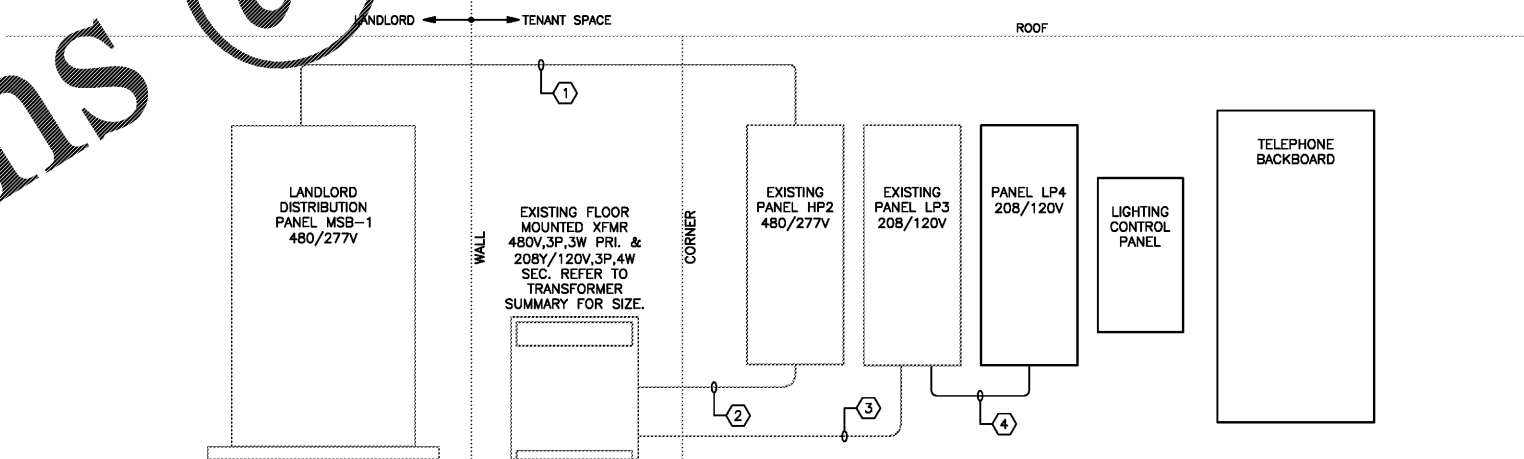
POTTERY BARN ONE-LINE RISER DIAGRAM

1
 NOT TO SCALE

WILLIAMS SONOMA ELECTRICAL LOAD SUMMARY						
DESCRIPTION	ACTUAL CONNECTED KVA	DEMAND FACTOR	ACTUAL DEMAND KVA	N.E.C. CONNECTED KVA	N.E.C. DEMAND FACTOR	N.E.C. DEMAND KVA
TRACK LIGHTING	3.66	1.25	4.63	80 ****	1.25	12
GENERAL LIGHTING	3.29	1.25	4.11	9.6 KVA	1.25	4.11
SHOW WINDOW LIGHTING ALLOW	-----	***	-----	***	0 FT 200W/LF x 1.25	0
GEN. PURPOSE RECEPTACLE	30.8	1.0 < 10KVA 0.5 > 10KVA	20.4	30.8	1.0 < 10KVA 0.5 > 10KVA	20.4
MOTOR(S)	0	1.0 + 25% LARGEST	0	0	1.0 + 25% LARGEST	0
FIXED ELECTRIC SPACE HTG.	46.4 *	1.0	46.4 *	46.4 *	1.0	46.4 *
AIR CONDITIONING EQUIPMENT	38.2 *	1.0 + 25% LARGEST **	38.2 *	38.2 *	1.0 + 25% LARGEST **	38.2 *
ELECTRIC WATER HEATER	18.3	1.25	22.9	18.3	1.25	22.9
MISCELLANEOUS LOADS	6.1	1.0	6.1	6.1	1.0	6.1
TOTAL	147		143	219		147

NOTES: * USE GREATER VALUE OF THE TWO CATEGORIES WHERE LOADS ARE NON-CONCURRENT.
 ** 125% OF LARGEST COMPRESSOR MOTOR IN SYSTEM. APPLIES TO ONLY ONE UNIT.
 *** ACTUAL SHOW WINDOW LIGHTING IS INCLUDED IN TRACK AND GENERAL LIGHTING SECTIONS.
 **** TOTAL SUM OF CURRENT LIMITERS IN AMPS

MINIMUM FEEDER = $\frac{147 \text{ KVA} \times 1000}{480 \times 1.73} = 181 \text{ A}$
 ELECTRICAL SERVICE AMPACITY = 300 A @ 480V, 3 PH



- KEYED NOTES**
- ① EXISTING LANDLORD INSTALLED 4-350KCMIL, 1 #4 GND., IN 3" C.
 - ② EXISTING LANDLORD INSTALLED 3 #1, 1 #6 GND., IN 1-1/2" C.
 - ③ EXISTING LANDLORD INSTALLED 4 #4/0, 1 #2 GND., IN 2-1/2" C.
 - ④ 4 #1, 1 #8 GND., IN 1-1/2" C.

POTTERY BARN
WILLIAMS-SONOMA
 Town Center Virginia Beach
 173/177 Central Park Avenue
 Virginia Beach, VA 23462

PROJECT #006-151817-00/#006-151412-00

ISSUED / REVISED	DATE
FEASIBILITY SET	08/10/17
PRELIMINARY SET	09/28/17
LL CD SET	11/30/17
PERMIT SET	12/18/17
BID SET	01/04/18

WILLIAMS SONOMA ONE-LINE RISER DIAGRAM

2
 NOT TO SCALE

ELECTRICAL RISER DIAGRAM
E-401