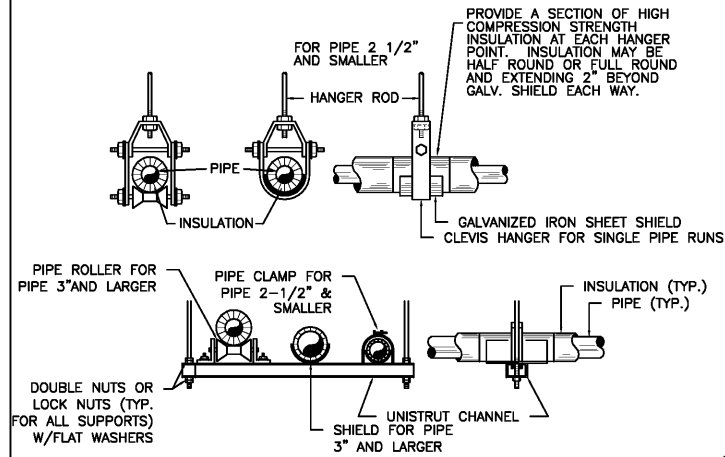


**DETAIL NOTES:**

1. MOUNT ON 4" HIGH 3/4" PLYWOOD BOX MOUNTED TO STORAGE PLATFORM LOCATED ABOVE MOPSINK.
2. WALL
3. FINISHED FLOOR
4. 1-1/4" DRAIN TO MOP SINK W/ AIR GAP.
5. FULL SIZE TO MOP SINK W/ AIR GAP.
6. SEISMIC STRAP
7. PRESSURE/ TEMPERATURE RELIEF VALVE
8. ATMOSPHERIC VACUUM BREAKER.
9. EXPOSED PIPING ON WALL.
10. EXPANSION TANK.
11. 12" HIGH HEAT TRAP.
12. SEE FLOOR PLANS FOR CONTINUATION.
13. BALL VALVE (TYP.)
14. WATER HEATER WH-1
15. DIELECTRIC UNION

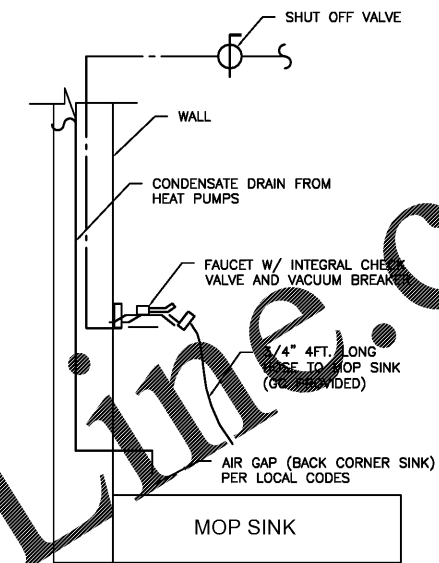
TANK WATER HEATER, WHT-1

NOT TO SCALE  
3



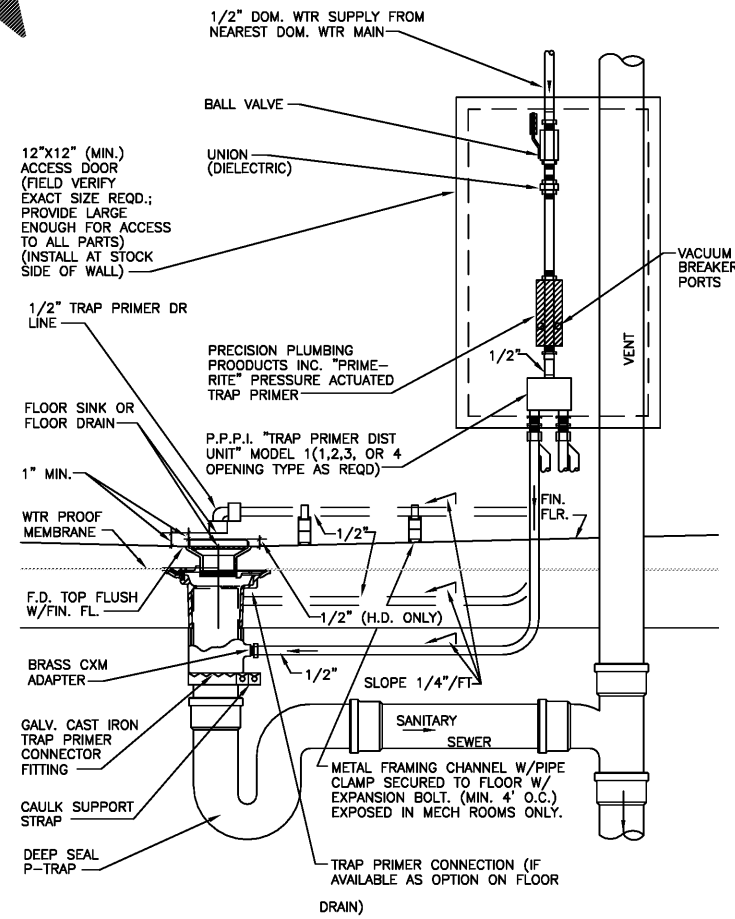
PIPE HANGER DETAIL

NOT TO SCALE  
2



MOP SINK DETAIL

NOT TO SCALE  
1



TRAP PRIMER CONNECTION DETAIL (TYP.)

NOT TO SCALE  
4

OWNER:  
**WILLIAMS-SONOMA, INC.**  
3250 Van Ness Avenue  
San Francisco, CA 94109  
T 415 616 8602  
F 415 439 8164  
www.williams-sonoma.com

**EEA**  
EEA Consulting Engineers  
6615 Vaught Ranch Road, Suite 100  
Austin, Texas 78730-2314 USA  
512.744.4400 main 512.744.4444 fax  
www.eeace.com  
State of Registration VIRGINIA  
Firm Registration No. 0407 004734  
EEA Project No. 20166524

DRAWN BY: ARC  
CHECKED BY: WKK

BID DOCUMENT ONLY

Not Intended for Construction or Permit.  
This document is released under the  
authority of:  
Registrant's Name: MICHAEL N. HART  
Serial No. 0402-030922

**P O T T E R Y B A R R I**  
**WILLIAMS-SONOMA**  
Town Center Virginia Beach  
173/177 Central Park Avenue  
Virginia Beach, VA 23462  
PROJECT #006-151817-00/#006-151412-00

ISSUED / REVISED	DATE
FEASIBILITY SET	08/10/17
PRELIMINARY SET	09/28/17
LL CD SET	11/30/17
PERMIT SET	12/18/17
BID SET	01/04/18

PLUMBING  
DETAILS

**P-201**

Order Plans @

WWW.LDILLINE.COM