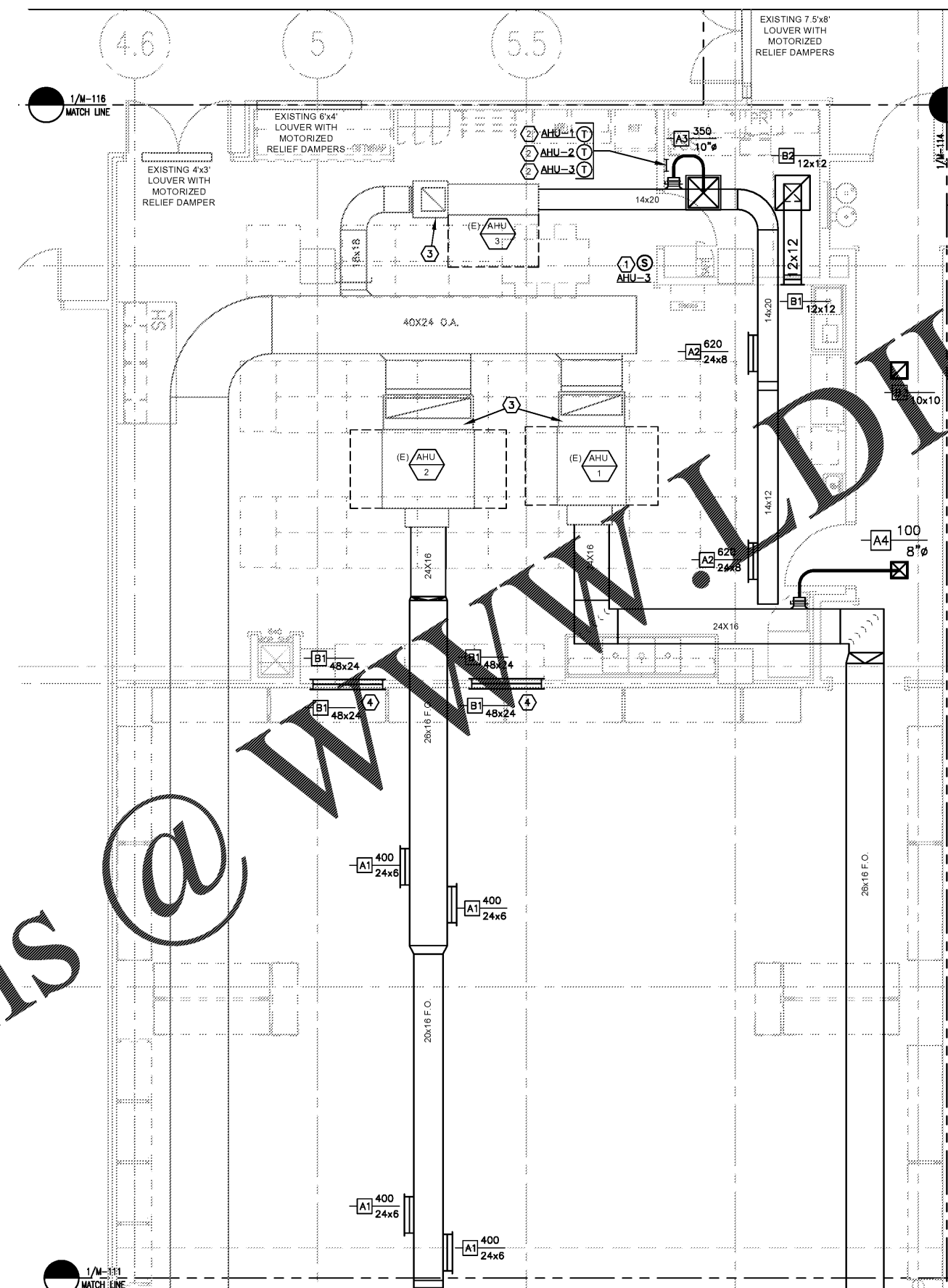


Order Plans @



**GENERAL NOTES**

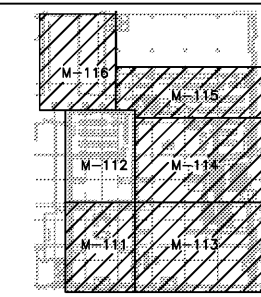
1. CONTRACTOR TO VERIFY ALL EXISTING CONDITIONS PRIOR TO BID.
2. ALL THERMOSTATS AND SENSORS SHOWN IN APPROXIMATE LOCATIONS. COORDINATE THE EXACT LOCATIONS WITH ARCHITECT.
3. KEEP ALL DUCTWORK AS TIGHT TO STRUCTURE AS POSSIBLE. NOTIFY ARCHITECT IF ANY DISCREPANCIES ARE FOUND.
4. DASHED LINE AROUND HVAC EQUIPMENT REPRESENTS MANUFACTURER'S RECOMMENDED CLEARANCES FOR EQUIPMENT MAINTENANCE. IT IS THE MECHANICAL CONTRACTOR'S RESPONSIBILITY TO MAINTAIN SERVICE CLEARANCES THE FULL HEIGHT OF THE UNIT. THIS AREA AND TO PROVIDE ACCESS TO THESE AREAS SUBJECT TO G.C.'S APPROVAL. SHOULD FREE AREA NOT BE AVAILABLE, CONTRACTOR'S PROJECT MANAGER FOR FURTHER INSTALLATION REQUIREMENTS.

**KEY PLAN**

REMOVE TEMPERATURE SENSOR PROVIDED BY OWNER WITH L&D PACKAGE. THE MOUNTING HEIGHT SHALL BE 48" A.F.F. CENTERED ON COLUMN. CONFIRM EXACT LOCATION WITH G.C. PRIOR TO ROUGH-IN. INSTALL CONTROL WIRING IN CONDUIT.

2. PROGRAMMABLE THERMOSTAT PROVIDED BY OWNER WITH L&D PACKAGE. MECHANICAL CONTRACTOR TO INSTALL 24V WIRING BETWEEN HVAC UNIT AND THERMOSTAT. THE MOUNTING HEIGHT SHALL BE 48" A.F.F. CONFIRM EXACT LOCATION WITH G.C. PRIOR TO ROUGH-IN. THE CONTRACTOR TO PROGRAM HVAC EQUIPMENT THERMOSTAT, INITIAL OPERATION HOURS, AND TEMPERATURE SET POINTS. ADJUST THE OPERATIONAL HOURS WHEN OBTAINED BY THE G.C..
3. PROVIDE SMOKE DETECTOR IN RETURN AIR DUCT. INTERLOCK SMOKE DETECTOR WITH AIR HANDLING UNIT. AIR HANDLING UNIT SHALL SHUT DOWN UPON SMOKE DETECTION. TIE SMOKE DETECTOR TO LL FIRE ALARM SYSTEM. COORDINATE ALL ELECTRICAL CONNECTION WITH ELECTRICAL CONTRACTOR AND LANDLORD.
4. PROVIDE RETURN AIR TRANSFER OPENING IN THE WALL HIGH AS POSSIBLE. PROVIDE GRILLES AS SPECIFIED ON EXPOSED SIDE OF OPENING. MOUNT GRILLE "UP SIDE DOWN" TO PREVENT VIEW THROUGH THE DEVICE. COORDINATE THE EXACT LOCATION TO AVOID CONFLICT WITH OTHER ELEMENTS.

**NOTE:**  
ALL RIGID ROUND AND FLAT OVAL DUCT SHALL BE SPIRAL WOUND, TYPICAL.



SCALE: 1/4" = 1'-0" @ FULL SIZE

KEYPLAN  
N.T.S.

OWNER:  
**WILLIAMS-SONOMA, INC.**  
3250 Van Ness Avenue  
San Francisco, CA 94109  
T 415 616 8602  
F 415 439 8164  
www.williams-sonomainc.com

**EEA**  
EEA Consulting Engineers  
6615 Vaught Ranch Road, Suite 100  
Austin, Texas 78730-2314 USA  
512.744.4400 main 512.744.4444 fax  
www.eeace.com  
State of Registration VIRGINIA  
Firm Registration No. 0407 004734  
EEA Project No. 20166524

DRAWN BY: SN  
CHECKED BY: WKK

**BID DOCUMENT ONLY**

Not Intended for Construction or Permit  
This document is released under the  
authority of:  
Registrant's Name: MICHAEL N. HART  
Serial No. 0402-030922

**P O T T E R Y B A R R I**  
**WILLIAMS-SONOMA**  
Town Center Virginia Beach  
173/177 Central Park Avenue  
Virginia Beach, VA 23462  
PROJECT #006-151817-00/#006-151412-00

ISSUED / REVISED	DATE
FEASIBILITY SET	08/10/17
PRELIMINARY SET	09/28/17
LL CD SET	11/30/17
PERMIT SET	12/18/17
BID SET	01/04/18

PARTIAL  
HVAC PLAN

**M-112**