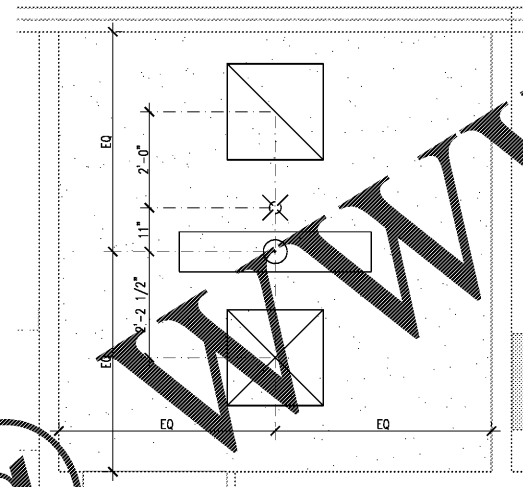
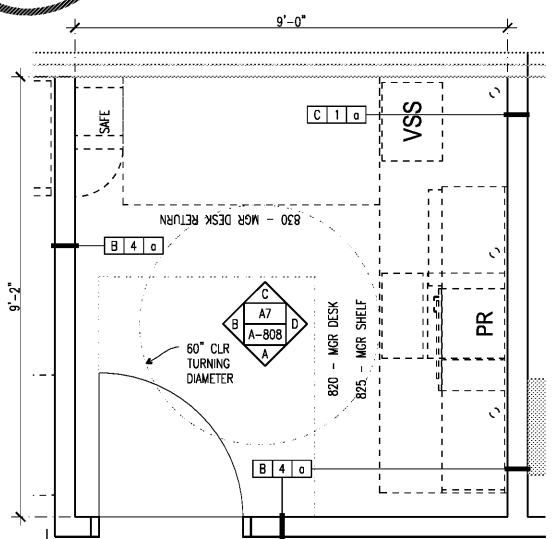


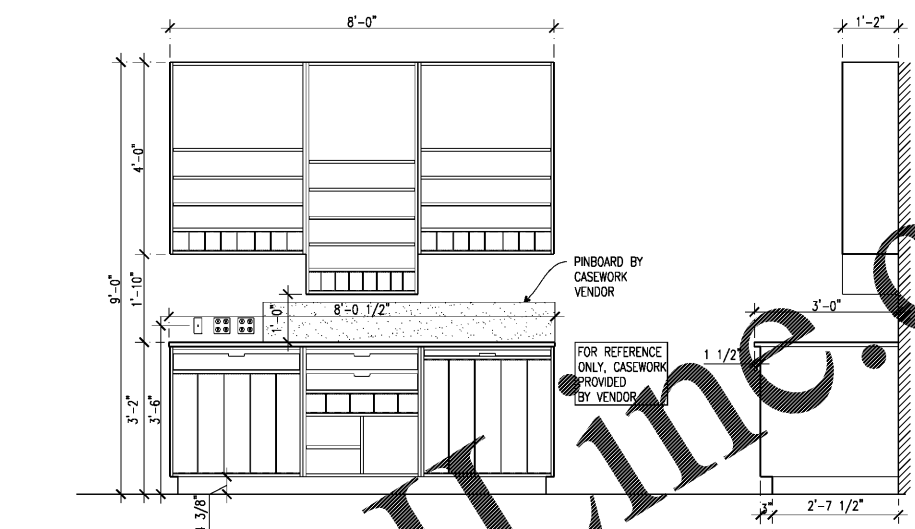
Order Plans



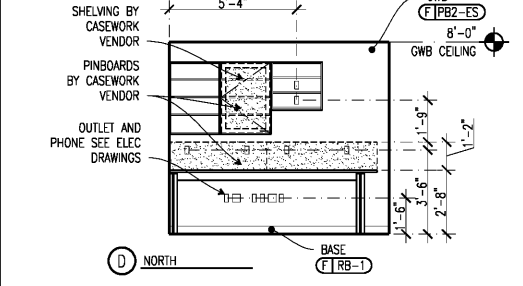
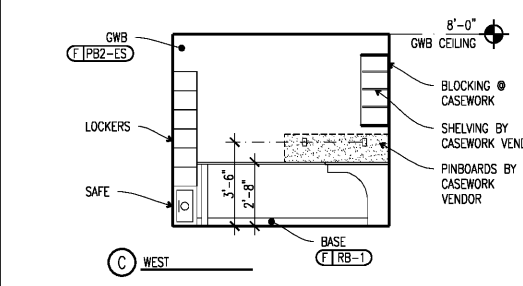
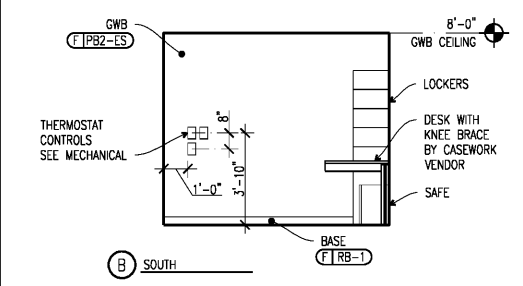
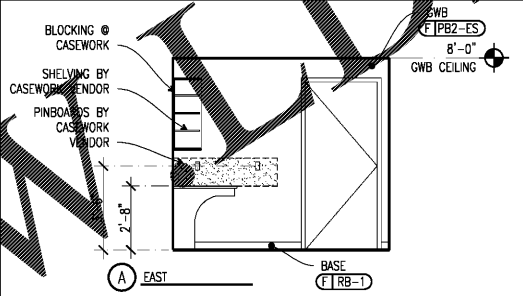
A5 ENLARGED MGR OFFICE RCP
1/2"=1'-0" PB



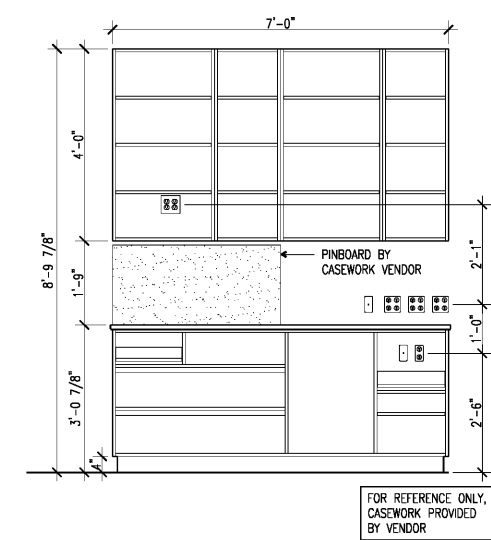
A5 ENLARGED MGR FLOOR PLAN
1/2"=1'-0" PB



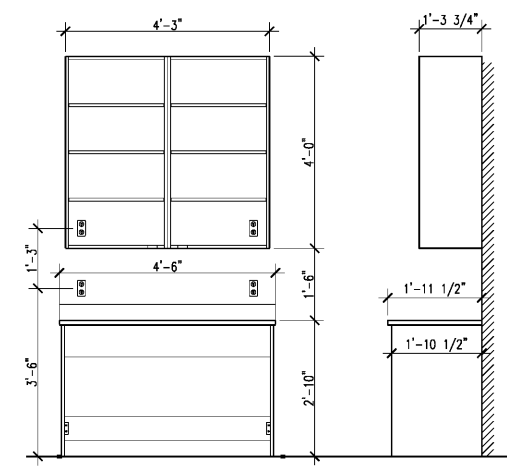
E7 PB GIFT WRAP COUNTER
1/2"=1'-0"



A7 PB MANAGER'S OFFICE ELEVATIONS
1/4"=1'-0"



C9 PB SHIP/REC COUNTER
1/2"=1'-0"



A9 PB EMPLOYEE COUNTER
1/2"=1'-0"

| ISSUED / REVISED | DATE |
|------------------|----------|
| FEASIBILITY SET | 08/10/17 |
| PRELIMINARY SET | 09/28/17 |
| LL CD SET | 11/30/17 |
| PERMIT SET | 12/18/17 |
| BID SET | 01/04/18 |

PB INTERIOR DETAILS

A-808

CALLISONRTKL
A DESIGN CONSULTANCY OF ARCADIS
CALLISONRTKL INC.
www.callisonrtkl.com

POTTERY BARN
WILLIAMS-SONOMA
Town Center Virginia Beach
173/177 Central Park Avenue
Virginia Beach, VA 23462

PROJECT #006-151817-00/#006-151412-00

OWNER:
WILLIAMS-SONOMA, INC.
3250 Van Ness Avenue
San Francisco, CA 94109
T 415 616 8602
F 415 439 8164
www.williams-sonomainc.com