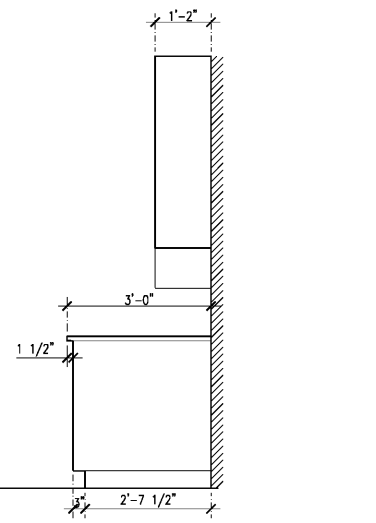
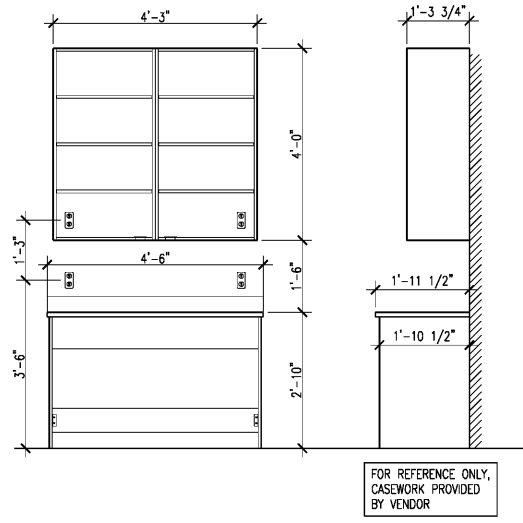


**E1** WS GIFT WRAP COUNTER  
1/2"=1'-0"



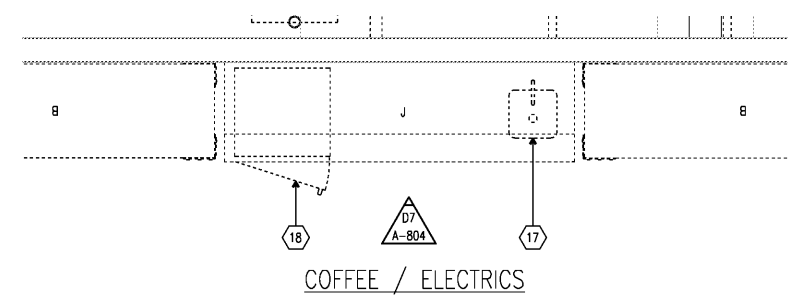
**E5** WS EMPLOYEE COUNTER  
1/2"=1'-0"



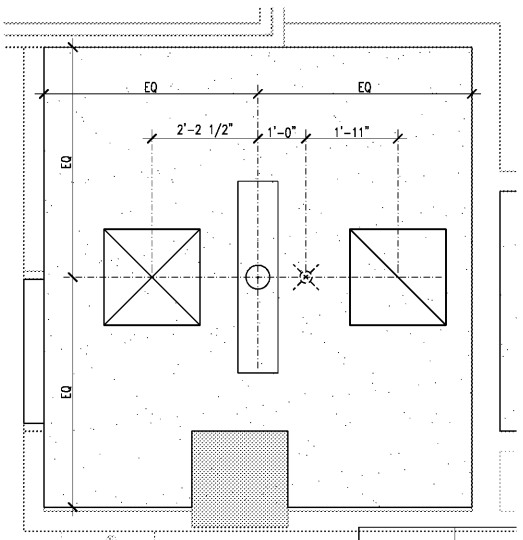
**D7** COFFEE/ELECTRICS ELEVATION  
1/2"=1'-0"

**COFFEE FOCAL / COOKWARE EQUIPMENT LEGEND**

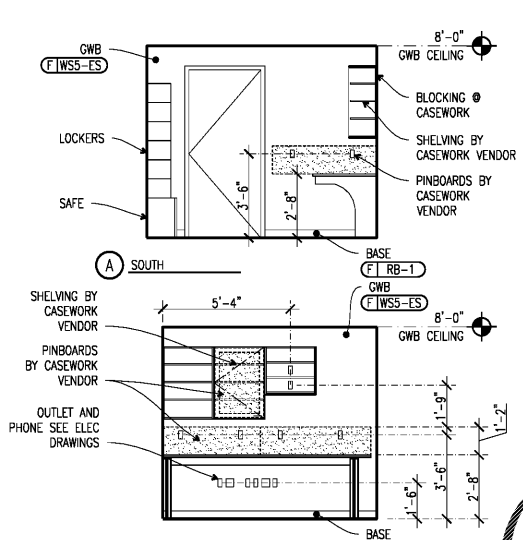
- 17 → HAND SINK + FAUCET (ELKAY SPECIFICATIONS ELUH212PD W/ FAUCET: POTTERY BARN EXTON - ANTIQUE BRONZE)
  - 18 → UNDER COUNTER REFRIGERATOR (PERLUCK HA24RB)
- NOTE: FOR GREASE TRAP, SEE PLUMBING DRAWINGS



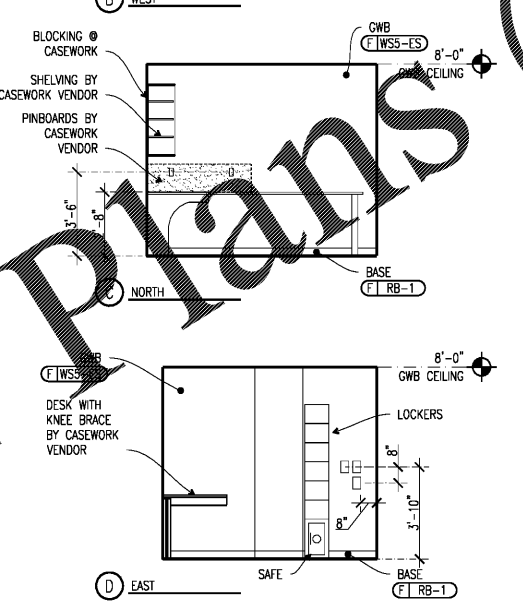
**A7** ENLARGED COFFEE/ELECTRICS PLAN  
1/2"=1'-0"



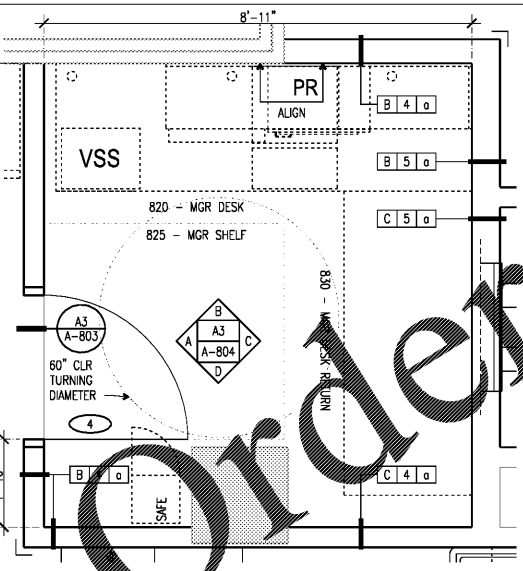
**C1** ENLARGED MGR OFFICE RCP  
1/2"=1'-0"



**E5** WS SHIP/REC COUNTER  
1/2"=1'-0"



**A3** WS MANAGER'S OFFICE ELEVATIONS  
1/4"=1'-0"



**A1** ENLARGED MGR FLOOR PLAN  
1/2"=1'-0"

EQUIPMENT PLAN IS FOR REFERENCE ONLY. COORDINATE LOCATION OF EQUIPMENT AND SERVICES WITH FIXTURE SHOP DRAWINGS AND ELECTRICAL/ PLUMBING DRAWINGS

WS INTERIOR DETAILS

**A-804**

WWW.LDLINE.COM  
 OWNER: WILLIAMS-SONOMA, INC.  
 3250 Van Ness Avenue  
 San Francisco, CA 94109  
 T 415 616 8602  
 F 415 439 8164  
 www.williams-sonomainc.com

**CALLISONRTKL**  
 A DESIGN CONSULTANCY OF ARCADIS  
 CALLISONRTKL INC.  
 www.callisonrtkl.com

**POTTERY BARN**  
**WILLIAMS-SONOMA**  
 Town Center Virginia Beach  
 173/177 Central Park Avenue  
 Virginia Beach, VA 23462  
 PROJECT #006-151817-00/#006-151412-00

ISSUED / REVISED	DATE
FEASIBILITY SET	08/10/17
PRELIMINARY SET	09/28/17
LL CD SET	11/30/17
PERMIT SET	12/18/17
BID SET	01/04/18