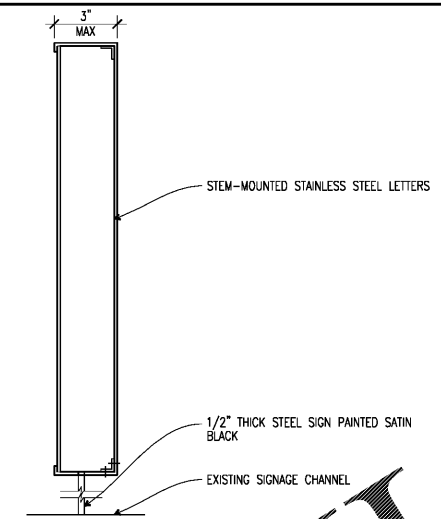


NOTE: STORE HOURS TBD

**E5** PB STORE OPENING HOURS  
1 1/2"=1'-0"

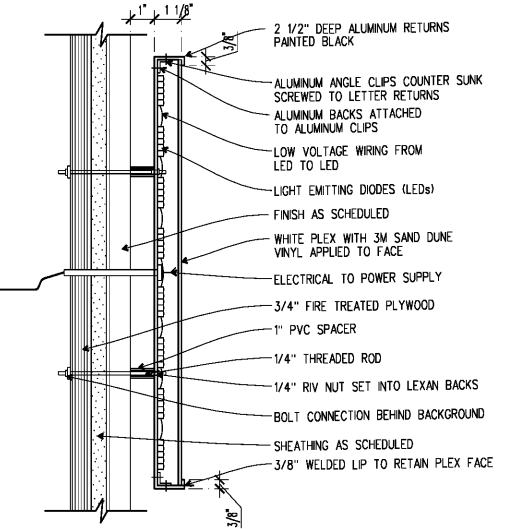


**E7** SECTION AT EXTERIOR STEM-MOUNTED SIGN  
3"=1'-0"

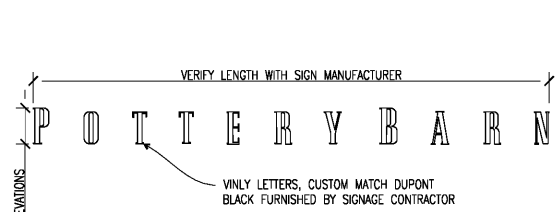
**PB EXTERIOR GRAPHICS SCHEDULE**

LOCATION	TEXT	MATERIAL	SIZE/DETAIL	APPLIES? (Y/N)
<b>1. BARRICADE GRAPHICS - SEE SHEET A-010 &amp; A-011</b>				
STOREFRONT WINDOW	POTTERY BARN	---	---	---
	GRAND OPENING	---	---	---
	BARRICADE GRAPHICS	---	---	---
<b>2. TEMPORARY STORE OPENING GRAPHICS</b>				
STOREFRONT WINDOW	POTTERY BARN	SEE A-011	---	Y
	OPENING SEASON, YEAR	SEE A-011	---	Y
<b>3. BANNER POLE</b>				
EXTERIOR STOREFRONT	POTTERY BARN	---	---	N
<b>4. EXTERIOR BARN SIGN</b>				
EXTERIOR STOREFRONT	POTTERY BARN	---	SEE A1/A-513	Y
<b>5. EXTERIOR P.C. SIGNS</b>				
CUSTOMER PICK-UP	POTTERY BARN CUSTOMER PICK-UP	---	SEE A7/A-513	Y
CUSTOMER PICK-UP PARKING	CUSTOMER PICK-UP PARKING	---	---	N
CUSTOMER PICK-UP DIRECTIONAL	CUSTOMER PICK-UP DIRECTIONAL	---	---	N
<b>6. EXTERIOR AWNING LOGO TEXT</b>				
FRONT ENTRY	POTTERY BARN	WIND TO MATCH TO MATCH P81-1	---	N
<b>7. STOREFRONT ILLUMINATED STEM/PIN MOUNTED SIGN</b>				
STOREFRONT	POTTERY BARN	---	SEE C5/A-513	Y
<b>8. STOREFRONT NON-ILLUMINATED STEM/PIN MOUNTED SIGN</b>				
STOREFRONT	POTTERY BARN	---	SEE A3/A-513	Y
<b>9. WINDOW VINYL</b>				
STOREFRONT WINDOWS	POTTERY BARN	VL-1	SEE C3/A-513	Y
STOREFRONT TRANSOM	POTTERY BARN	VL-1	SEE C3/A-513	Y
STORE HOURS	MON-FRI XX-X:XX SAT XX-X:XX SUN XX-X:XX	VL-1	SEE E5/A-513	Y

GRAPHIC SCHEDULE NOTES:  
 1. VERIFY LOCATION OF ALL GRAPHICS ON SITE WITH ARCHITECT PRIOR TO INSTALLATION.  
 2. HEIGHT OF SIGNAGE IS BASED ON THE "P" OF THE POTTERY BARN LOGO.  
 3. FINISH TO BE BLACK, U.O.N.  
 4. SIGNAGE SHOP DRAWINGS TO BE SUBMITTED FOR LANDLORD APPROVAL.  
 5. ALL EXTERIOR SIGNAGE AND AWNINGS TO BE UNDER SEPARATE PERMIT, IF USED.  
 6. VFY ALL SIGNAGE W/ SUBMITTAL FOR APPROVAL, TYP.



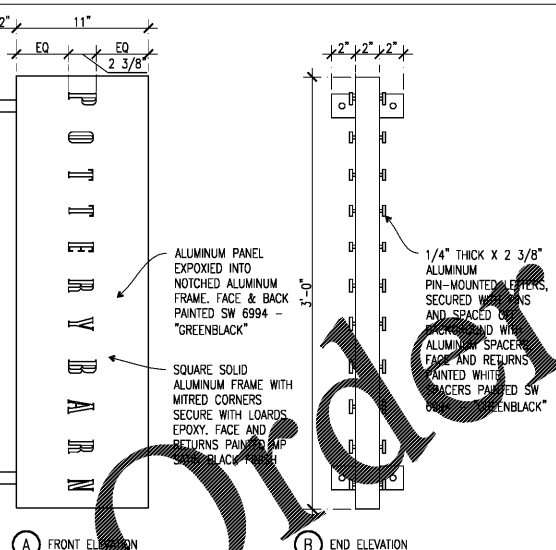
**C1** SECTION AT EXTERIOR HALO ILLUMINATED SIGN  
3"=1'-0"



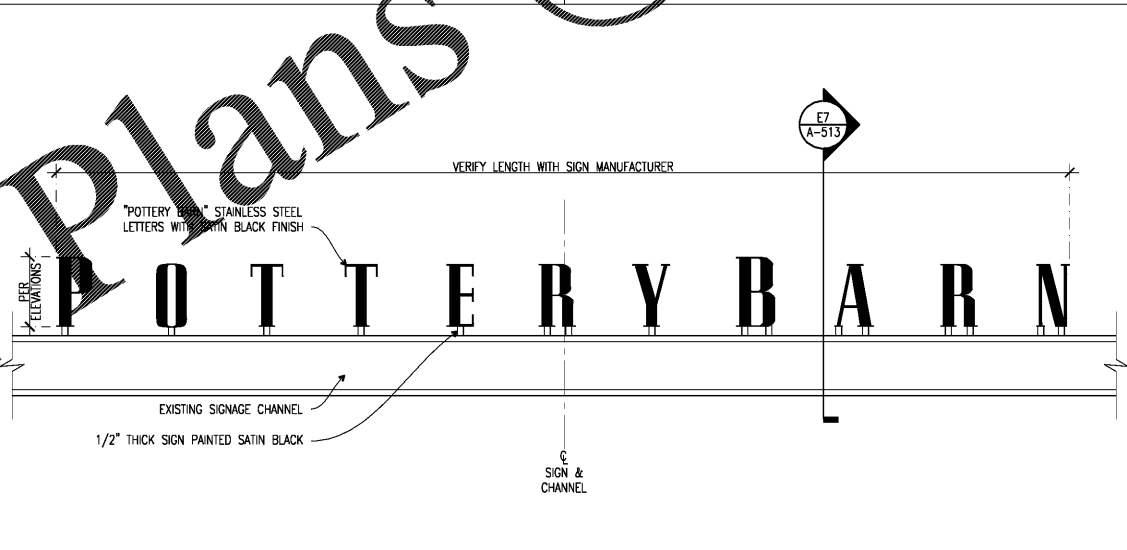
**C3** VINYL WINDOW GRAPHICS  
1 1/2"=1'-0"



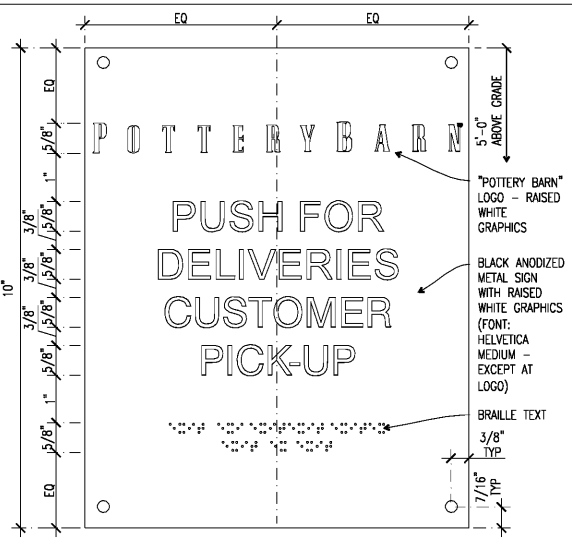
**E5** PB STOREFRONT SIGNAGE  
1 1/2"=1'-0"



**A1** PB BLADE SIGN  
1 1/2"=1'-0"



**A3** EXTERIOR STEM-MOUNTED STAINLESS STEEL SIGN: ENTRY  
1/2"=1'-0"



**A7** PICK-UP & DELIVERIES SIGN  
6"=1'-0"

OWNER:  
**WILLIAMS-SONOMA, INC.**  
 3250 Van Ness Avenue  
 San Francisco, CA 94109  
 T 415 616 8602  
 F 415 439 8164  
 www.williams-sonoma.com

**CALLISONRTKL**  
 A DESIGN CONSULTANCY OF ARCADIS  
**CALLISONRTKL INC.**  
 www.callisonrtkl.com

**POTTERY BARN**  
**WILLIAMS-SONOMA**  
 Town Center Virginia Beach  
 173/177 Central Park Avenue  
 Virginia Beach, VA 23462  
 PROJECT #006-151817-00/#006-151412-00

ISSUED / REVISED	DATE
FEASIBILITY SET	08/10/17
PRELIMINARY SET	09/28/17
LL CD SET	11/30/17
PERMIT SET	12/18/17
BID SET	01/04/18

PB EXTERIOR SIGNAGE DETAILS & GRAPHICS SCHEDULE