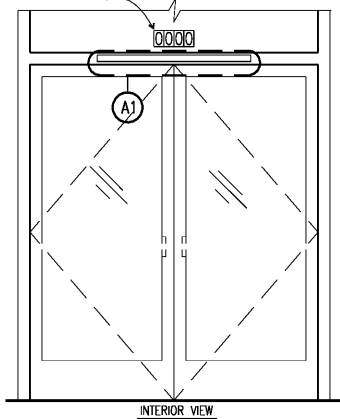


3" HIGH MIN INDIVIDUAL VINYL LETTERS, CENTERED ABOVE ENTRY DOOR; WHITE TEXT ON BLACK BACKGROUND, CONFIRM LOCATION AND SIZE WITH FIRE MARSHAL



A ENTRY DOOR SIGNAGE (VINYL SIGN)
E1 DOOR SIGNAGE
1/2"=1'-0"

THIS DOOR TO REMAIN UNLOCKED WHEN BUILDING IS OCCUPIED

SIGN REQUIREMENTS:

1. READILY VISIBLE AND DURABLE SIGN SHALL BE PLACED ON OR ADJACENT TO THE DOOR.
2. HEIGHT OF LETTERS 1" MINIMUM HELVETICA FONT, WHITE OR BLACK LETTERS TO CONTRAST WITH STOREFRONT COLOR.

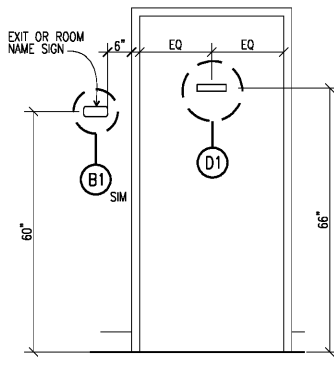
A1 ENTRY DOOR SIGNAGE (VINYL SIGN)

ROOM NAME

SIGN REQUIREMENTS:

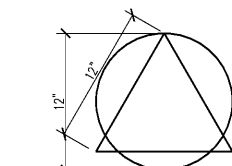
1. UPPERCASE CHARACTERS RAISED 1/32"
2. HEIGHT OF LETTERS 1" MINIMUM IN HELVETICA FONT WITH MATTE BLACK LETTERS ON STAINLESS STEEL BACKGROUND WITH RANDOM DA FINISH WITH BLACKENED TINT
3. TEXT VARIES, SEE PLANS FOR TEXT AND LOCATIONS.

B1 SIGN VIEW

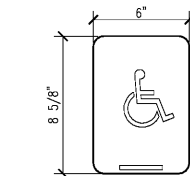


B EXIT, EXIT ROUTE, ROOM NAME SIGNAGE (PLASTIC SIGN)

GENDER NEUTRAL RESTROOM SIGNS



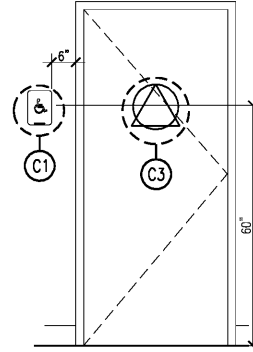
C3 RESTROOM DOOR PLAQUES



C1 RESTROOM WALL PLAQUES

C RESTROOM SIGNAGE (PLASTIC SIGN)

WALL MOUNTED SIGNAGE TO BE LOCATED ON LATCH SIDE OF DOOR CLEAR OF DOOR-SWING.



D RESTROOM DOOR SIGNAGE
IF REQUIRED FOR T.C.O.

1. EACH GRADE-LEVEL EXTERIOR EXIT DOOR SHALL BE IDENTIFIED BY A TACTILE EXIT SIGN WITH THE WORD, "EXIT"
2. EACH EXIT DOOR THAT LEADS DIRECTLY TO A GRADE-LEVEL EXTERIOR EXIT BY MEANS OF A STAIRWAY OR RAMP SHALL BE IDENTIFIED BY A TACTILE EXIT SIGN WITH THE FOLLOWING WORDS AS APPROPRIATE:
A. "EXIT STAIR DOWN"
B. "EXIT RAMP UP"
C. "EXIT STAIR UP"
D. "EXIT RAMP UP"
3. EACH EXIT DOOR THAT LEADS DIRECTLY TO A GRADE-LEVEL EXTERIOR EXIT BY MEANS OF AN EXIT ENCLOSURE THAT DOES NOT UTILIZE A STAIR OR RAMP, OR AN EXIT PASSAGEWAY SHALL BE IDENTIFIED BY A TACTILE SIGN WITH THE WORDS "EXIT ROUTE"
4. EACH EXIT ACCESS DOOR FROM AN INTERIOR ROOM OR AREA THAT IS REQUIRED TO HAVE A VISUAL EXIT SIGN SHALL BE IDENTIFIED BY A TACTILE EXIT SIGN WITH THE WORDS "EXIT ROUTE"
5. EACH EXIT DOOR THROUGH A HORIZONTAL EXIT SHALL BE IDENTIFIED BY A TACTILE EXIT SIGN WITH THE WORDS "TO EXIT"

D1 TACTILE EXIT SIGNAGE CRITERIA

PB INTERIOR GRAPHICS SCHEDULE

LOCATION	TEXT	MATERIAL	SIZE/DETAIL	APPLIES? (Y/N)
1. INTERIOR MISCELLANEOUS SIGNS				
ENTRY DOORS	POTTERY BARN	---	---	---
2. INTERIOR IDENTIFYING SIGNS - BACK OF HOUSE				
NOTE: 1-1/4" HIGH UPPER AND LOWER CASE BLACK VINYL LETTERS INSTALLED BY OPTION OF STORE MANAGER				
MANAGER'S OFFICE DOOR	MANAGER	---	---	TBD
REAR BUREAU	POTTERY BARN	---	---	N
REARITE STOCK DOOR	POTTERY BARN	---	---	N
3. INTERIOR IDENTIFYING SIGNS - RESTROOMS				
NOTE: 1/4" THICK PLYWOOD PAINTED BLACK WITH ADA RASTER BRUSH PER E-511				
PUBLIC REST ROOM DOOR	MEN	TBD	SEE E1/A-512	TBD
	WOMEN	TBD	SEE E1/A-512	TBD
4. INTERIOR IDENTIFYING SIGNS - SALES FLOOR - SEE DETAIL A3/A-512				
SEE INTERIOR ELEVATIONS. NOTE: 1/4" THICK PIN-MOUNTED ALUMINUM LETTERS WITH BLACKENED METAL FINISH, MOUNTED 1/2" FROM WALL. LEDGES LETTERS TO BE SURFACE MOUNTED TO FIXTURE. CANDLELIGHT LETTERS TO BE VALANCE-MOUNTED				
SALES AREA	POTTERY BARN	---	SEE A3/A-512	Y
	RESTROOMS	---	SEE A3/A-512	Y
	DESIGN STUDIO	---	SEE A3/A-512	Y
	FLOOR COVERINGS	---	SEE A3/A-512	Y

GRAPHIC SCHEDULE NOTES:
1. VERIFY LOCATION OF ALL GRAPHICS ON SITE WITH ARCHITECT PRIOR TO INSTALLATION.
2. HEIGHT OF SIGNAGE IS BASED ON THE "P" OF THE POTTERY BARN LOGO.
3. FINISH TO BE BLACK, U.O.N.

OWNER:
WILLIAMS-SONOMA, INC.
3250 Van Ness Avenue
San Francisco, CA 94109
T 415 616 8602
F 415 439 8164
www.williams-sonoma.com

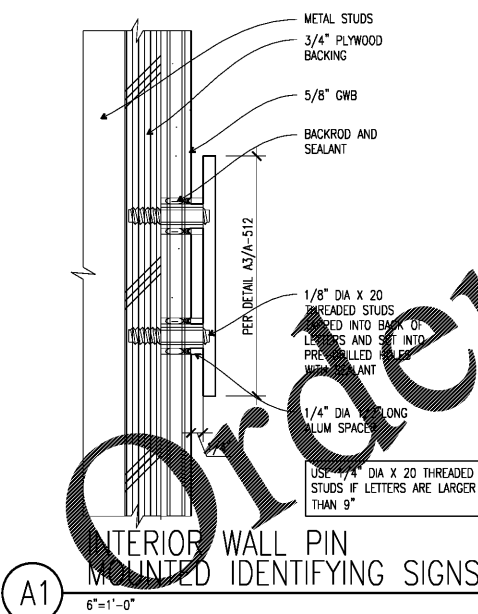
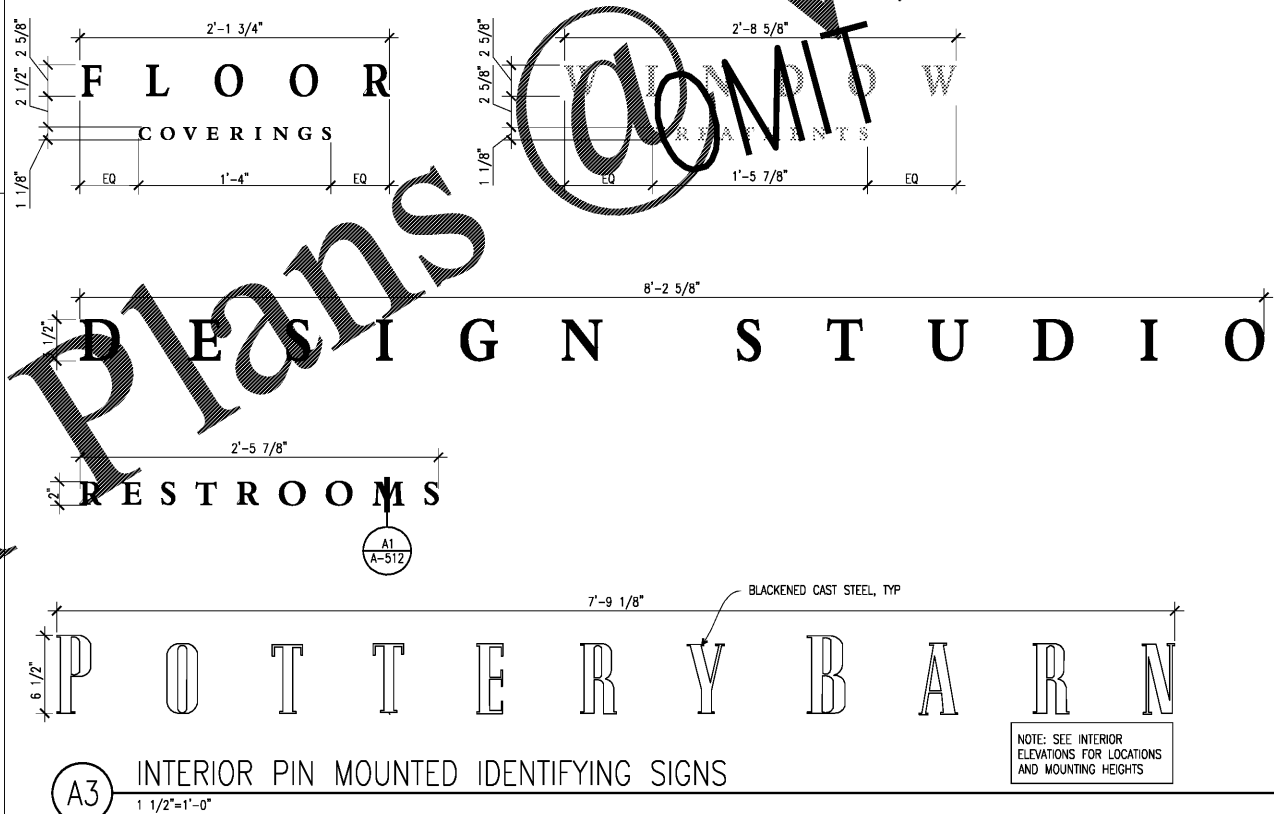
CALLISONRTKL
A DESIGN CONSULTANCY OF ARCADIS
CALLISONRTKL INC.
www.callisonrtkl.com

POTTERY BARN
WILLIAMS-SONOMA
Town Center Virginia Beach
173/177 Central Park Avenue
Virginia Beach, VA 23462
PROJECT #006-151817-00/#006-151412-00

ISSUED / REVISED	DATE
FEASIBILITY SET	08/10/17
PRELIMINARY SET	09/28/17
LL CD SET	11/30/17
PERMIT SET	12/18/17
BID SET	01/04/18

PB INTERIOR SIGNAGE DETAILS & GRAPHICS SCHEDULE

A-512



A1 INTERIOR WALL PIN MOUNTED IDENTIFYING SIGNS
6"=1'-0"

A3 INTERIOR PIN MOUNTED IDENTIFYING SIGNS
1 1/2"=1'-0"

NOTE: SEE INTERIOR ELEVATIONS FOR LOCATIONS AND MOUNTING HEIGHTS