



ARCHITECTS • ENGINEERS • SURVEYORS  
 100 CANTON DRIVE  
 FOND DU LAC, WI 54935  
 PHONE: (920) 926-9800  
 WWW.EXCELENGINEER.COM

COLLABORATION  
**AspenDental**

**PROJECT INFORMATION**

PROJECT NUMBER 1712680

TENANT BUILD-OUT FOR:  
**ASPEN DENTAL**  
 3070 WILLIAM STREET • CAPE GIRARDEAU, MO 63703



**SHEET DATES**

ISSUE DATE JUNE 1, 2017  
 REVISIONS  
 AD1 JUNE 6, 2017  
 AD2 JUNE 22, 2017  
 ENTIRE SHEET  
 CB2 DEC. 19, 2017

**SHEET INFORMATION**

FLOOR PLAN - AIR & VACUUM PIPING  
 SHEET NUMBER

**P1.2**

**DENTAL EQUIPMENT COORDINATION:**  
 - PLUMBING CONTRACTOR TO VERIFY TYPE AND LOCATION OF ALL DENTAL EQUIPMENT, ROUGH-IN DIMENSIONS, AND REQUIRED PLUMBING CONNECTIONS. PLUMBING CONTRACTOR SHALL FURNISH AND INSTALL ALL FLOOR FIXTURES, FLOOR DRAINS, HUB DRAINS, WATER CLOSETS, LAVATORIES AND FLOOR SINKS. DENTAL EQUIPMENT SUPPLIER SHALL FURNISH AND INSTALL ALL FIXTURES IDENTIFIED ON THEIR PLANS (WITH THE EXCEPTION OF THOSE IDENTIFIED ABOVE). INSTALL ALL DENTAL EQUIPMENT AND PROVIDE ALL FIXTURE TRAPS, SUPPLIES AND STOPS, ISOLATION VALVES, MIXING VALVES, ETC. AND MAKE FINAL CONNECTIONS TO DENTAL EQUIPMENT WITH THE EXCEPTION OF FINAL CONNECTION OF AIR COMPRESSOR AND VACUUM SYSTEM BY PLUMBING CONTRACTOR. VERIFY ALL EQUIPMENT CONNECTIONS WITH THE TENANT AND EQUIPMENT SUPPLIER PRIOR TO INSTALLATION. PROVIDE ADDITIONAL CONNECTIONS AS REQUIRED. COORDINATE ALL WORK ACCORDINGLY.

GAS LOAD SUMMARY		
ITEM	MBH INPUT	REQUIRED PRESSURE
RTAC-1	72	7" W.C.
RTAC-2	72	7" W.C.
RTAC-3	72	7" W.C.
LAB	2.4	7" W.C.
<b>Total</b>	<b>218.4</b>	

- GAS PRESSURE AT METER = 7" W.C.

**GENERAL NOTES:**

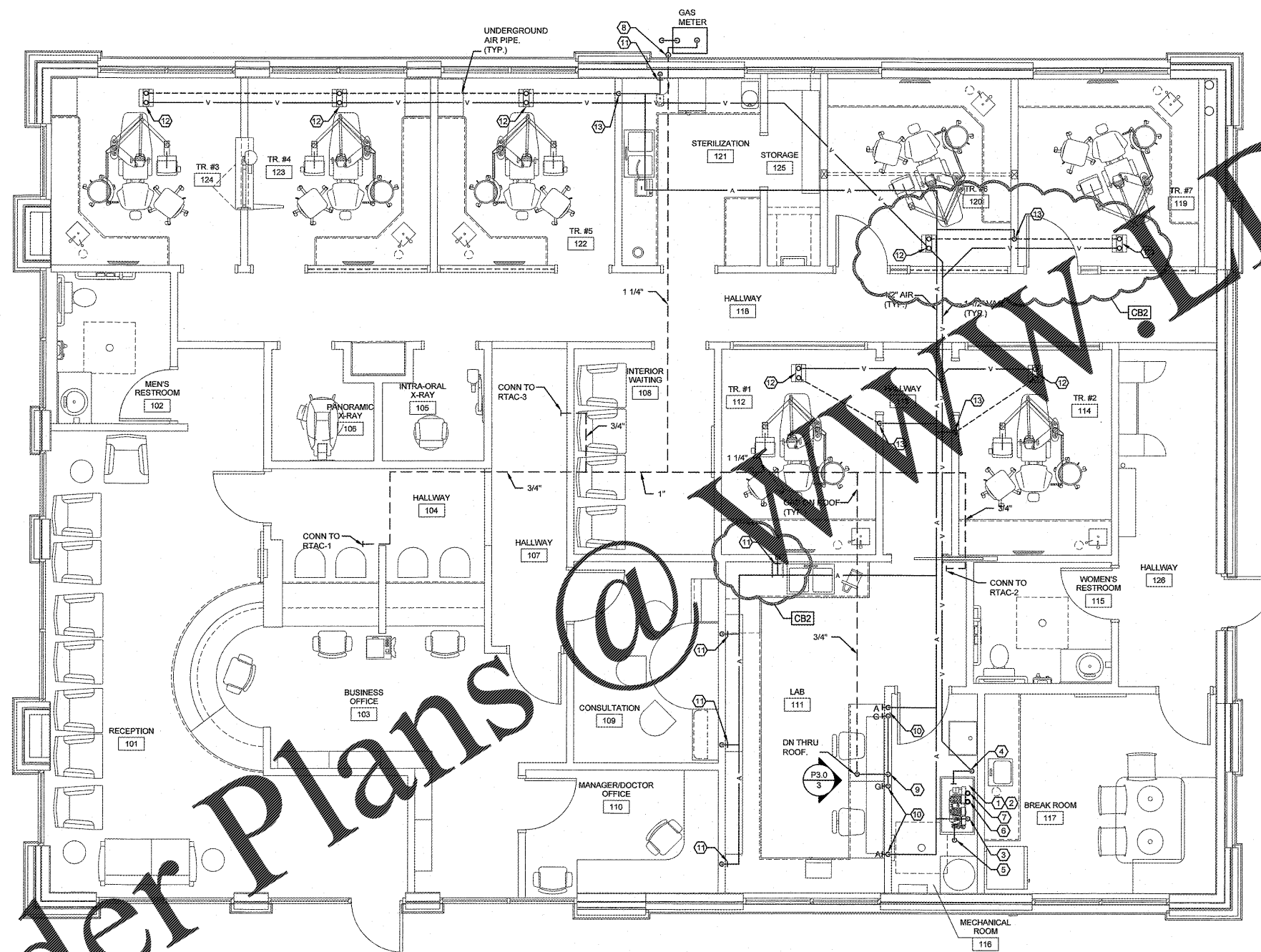
- ALL VACUUM LINES SHALL BE INSTALLED BELOW SLAB UNLESS OTHERWISE NOTED.
- TERMINATE COMPRESSED AIR LINES PER DENTAL EQUIPMENT DETAILS.
- COMPRESSED AIR SHALL BE INSTALLED ABOVE CEILING UNLESS OTHERWISE NOTED.
- FINAL CONNECTIONS TO AIR COMPRESSOR AND VACUUM SYSTEM BY PLUMBING CONTRACTOR.
- REFER TO SHEET U1.1 PRIOR TO ROUGH-IN OF FIXTURES.
- TERMINATION OF 1 1/2" VACUUM LINES TO BE REDUCED TO 1/2" FEMALE THREAD TYPICAL. FOR ALL UTILITY CENTERS, TERMINATION OF 1/2" AIR LINES TO BE 1/2" MALE THREAD WITH 3/8" COMPRESSION FITTING TYPICAL. ALL PLUMBING AND ELECTRICAL FOR UTILITY CENTER SHALL BE CONTAINED WITHIN 12" X 12" AREA IN FLOOR. SEE DENTAL EQUIPMENT DRAWINGS FOR FURTHER INFORMATION.

**INSTALLATION NOTES:**

- AIR COMPRESSOR TO BE FURNISHED AND INSTALLED BY THE OWNER'S EQUIPMENT PROVIDER.
- VACUUM SYSTEM TO BE FURNISHED AND INSTALLED BY THE OWNER'S EQUIPMENT PROVIDER. UNIT CONTAINS INTEGRAL AMALGAM SEPARATOR.
- ROUTE 1/2" COMPRESSED AIR LINE ABOVE CEILING AND TRANSITION TO HORIZONTAL FOR DISTRIBUTION. VERIFY LINE SIZE AND CAPACITY REQUIREMENTS WITH TENANT AND EQUIPMENT MANUFACTURER PRIOR TO INSTALLATION.
- ROUTE 1 1/2" VACUUM PIPING DOWN BELOW FLOOR FOR DISTRIBUTION.
- ROUTE VACUUM DISCHARGE TO ADJACENT 3" HUB DRAIN AS SHOWN ON SHEET P1.1. DISCHARGE IN ACCORDANCE WITH PLUMBING CODE. SEE RAM-VAC DETAIL FOR MORE INFORMATION.
- ROUTE 2" PVC UP TO V.T.R. FROM VACUUM HEADS. TERMINATE ABOVE ROOF WITH GOOSENECK FITTING. CONNECTION BY BARBER. DO NOT JOIN WITH SANITARY VENT. MAINTAIN ALL CODE REQUIREMENTS FOR AIRWAYS ON THE ROOF. COORDINATE VTR LOCATION WITH MECHANICAL CONTRACTOR. SEE RAM-VAC DETAIL FOR MORE INFORMATION.
- ROUTE 1" PVC UP TO ABOVE SUSPENDED CEILING FOR FRESH AIR INTAKE FOR AIR COMPRESSOR. DO NOT JOIN WITH SANITARY VENT. TO BE INSTALLED AT TIME OF FRESH AIR EQUIPMENT INSTALLATION. SEE RAM-VAC DETAIL FOR MORE INFORMATION.
- ROUTE GAS PIPING DOWN EXTERIOR WALL TO METER LOCATION. COORDINATE GAS LOAD WITH UTILITY.
- ROUTE NEW GAS LINE DOWN IN WALL TO RECESSED SHUTOFF BOX WITH 1/2" SHUTOFF. PROVIDE "WATTS" APU-8 10"x10" SPRING FIT ACCESS PANEL. LABEL AS 1/2" SHUTOFF. ROUTE GAS TO LAB WORK STATIONS AND PROVIDE 1/2" BRANCH LINES TO INDIVIDUAL LAB STATIONS. VERIFY ROUGH-IN LOCATION WITH TENANT REPRESENTATIVE. SEE LAB WORK STATION ELEVATION 3/P3.0. PROVIDE GAS PRESSURE REGULATOR AND EXTERIOR VENT IF REQUIRED PER OWNER FURNISHED EQUIPMENT (COORDINATE WITH OWNER AS REQUIRED).
- PROVIDE 1/2" GAS LINE AND 1/2" AIR LINE STUBBED OUT AT LAB WORK STATION ELEVATION (SEE DETAIL 3/P3.0). PLUMBING CONTRACTOR TO MAKE FINAL CONNECTIONS.
- PROVIDE 1/2" COMPRESSED AIR CONNECTION AT 44" A.F.F. SEE DETAIL D-13MD AIR VALVE DETAIL FOR ADDITIONAL REQUIREMENTS.
- PROVIDE 1 1/2" VACUUM CONNECTION AND 1/2" COMPRESSED AIR CONNECTION TO UTILITY CENTER. STUB PIPING UP THROUGH FLOOR TO UTILITY CENTER ENCLOSURE FOR TERMINATION BY OWNER'S EQUIPMENT PROVIDER. SEE DETAIL D-3AMD.
- ROUTE 1/2" COMPRESSED AIR PIPING DOWN THRU WALL AND BELOW FLOOR FOR DISTRIBUTION.

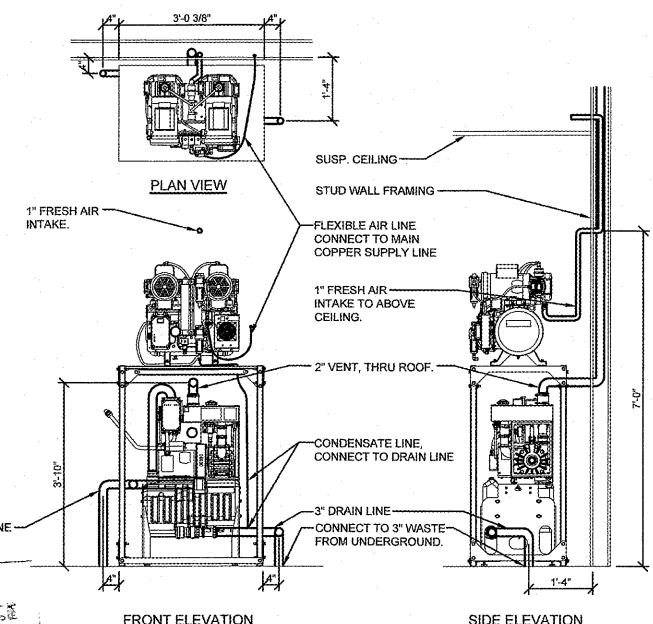
**NOTES:**

- ALL PIPING IS TO BE CONCEALED. IF BUILDING CONSTRUCTION DOES NOT PERMIT CONCEALING PIPING, LOCATIONS AND ROUTING ARE TO BE APPROVED BY ARCHITECT/OWNER PRIOR TO INSTALLATION.



**FLOOR PLAN - AIR AND VACUUM PIPING**

SCALE: 1/4" = 1'-0"



**RAM-VAC DETAIL**

NO SCALE

REVIEWER FOR  
 CODE COMPLIANCE  
 JAN 03 2013  
 RETAIN AT JOB SITE  
 Approved By: [Signature]  
 CITY OF CAPE GIRARDEAU

Order Plans @