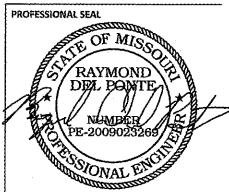


**PROJECT INFORMATION**

PROJECT NUMBER 1712680

TENANT BUILD-OUT FOR:  
**ASPEN DENTAL**  
3070 WILLIAM STREET • CAPE GIRARDEAU, MO 63703



**SHEET DATES**

ISSUE DATE JUNE 1, 2017

REVISIONS AD4 AUG. 16, 2017

**SHEET INFORMATION**

LEGEND, GENERAL SCHEDULES & ONELINE

SHEET NUMBER

**E0.1**

**LEGEND**

NOTE: ALL SYMBOLS SHOWN MAY NOT APPEAR ON DRAWINGS. ALL MOUNTING HEIGHTS ARE TYPICAL UNLESS OTHERWISE NOTED

| SYMBOL                                  | IDENTIFICATION   | SYMBOL | IDENTIFICATION   |
|---|--|--------|--|
| ○                                       | RECESSED, SURFACE, OR PENDANT MOUNTED LIGHT FIXTURE  | ⏏      | EMERGENCY LIGHT MOUNT 11'-0" AFF TO TOP OR 8" BELOW CEILING, WHICHEVER IS LOWER  |
| ○                                       | WALL MOUNTED LIGHT FIXTURE, MOUNT 7'-0" AFF OR 8" ABOVE MIRROR   | ⏏      | RECESSED EMERGENCY LIGHT   |
| ○                                       | RECESSED SURFACE MOUNTED, OR CHAIN HUNG LIGHT FIXTURE  | ⊕      | EXIT LIGHT   |
| ○                                       | PENDANT FIXTURE  | ⊕      | OCCUPANCY SENSOR   |
| ⊕                                       | EXTERIOR WALL MOUNTED OR INTERIOR WALL WASH FIXTURE  | ⊕      | WALL MOUNTED OCCUPANCY SENSOR WITH SWITCH  |
| ⊕                                       | SINGLE HEAD POLE MOUNTED FIXTURE   | ⊕      | DUAL LEVEL/CIRCUIT OCCUPANCY SENSOR WITH SWITCH  |
| ⊕                                       | DOUBLE HEAD POLE MOUNTED FIXTURE   | ⊕      | PHOTO CONTROL  |
| <b>WIRING DEVICES</b>                   |  |        |  |
| ⊕                                       | SINGLE POLE SWITCH, MOUNT 48" AFF TO CENTER, 3 = 3 WAY, 4 = 4 WAY, P = PILOT, D = DIMMER, K = KEYS                     | MW     | DOUBLE RECEPTACLE, MOUNT 18" AFF TO CENTER, FIELD VERIFY HEIGHT  |
| ⊕                                       | DUAL LEVEL SWITCH, MOUNT 48" AFF TO CENTER SEE DETAIL  | ⊕      | POWER RECEPTACLE, MOUNT 18" AFF TO CENTER  |
| ⊕                                       | LOW VOLTAGE SWITCH, MOUNT 48" AFF TO CENTER  | ⊕      | SWITCH, BOTTOM HALF OF RECEPTACLE, TOP SWITCHED  |
| ⊕                                       | SIMPLEX RECEPTACLE, MOUNT 18" AFF TO CENTER  | ⊕      | SPECIAL OUTLET   |
| ⊕                                       | DUPLEX RECEPTACLE, MOUNT 18" AFF TO CENTER   | ⊕      | JUNCTION BOX   |
| ⊕                                       | TRIPLEX RECEPTACLE, MOUNT 18" AFF TO CENTER  | ⊕      | COMBINATION FLOOR OUTLET/BLANK JUNCTION BOX - WIREMOLD - RESOURCE RFB/SERIES OR EQUIVALENT, 1" C STUB INTO ACCESSIBLE SPACE                      |
| ⊕                                       | DUPLEX RECEPTACLE MOUNT VERTICAL, 1" ABOVE BACKPLASH TO CENTER, 1" C STUB INTO ACCESSIBLE SPACE, MOUNT 6" ABOVE CENTER | ⊕      | BLANK BOX 4" EXTRA DEEP BOX, SINGLE GANG RING, BLANKPLATE, 1" C STUB INTO ACCESSIBLE SPACE, MOUNT 18" AFF TO CENTER                              |
| ⊕                                       | DUPLEX RECEPTACLE SURFACE MOUNTED, 1" ABOVE CEILING/SOFT MOUNTED   | ⊕      | ABOVE COUNTER BLANK BOX, 4" EXTRA DEEP BOX, SINGLE GANG RING, BLANKPLATE, 1" C STUBBED INTO ACCESSIBLE SPACE, MOUNT 6" ABOVE BACKPLASH TO CENTER |
| <b>MOTORS / MOTOR CONTROL EQUIPMENT</b> |  |        |  |
| ⊕                                       | DISCONNECT FURNISHED BY EC   | MS     | MANUAL STARTER   |
| ⊕                                       | NON-COMBINATION STARTER  | ⊕      | MOTOR CONNECTION   |
| ⊕                                       | COMBINATION STARTER  | ⊕      | MOTOR CONNECTION REQUIRING REMOTE STARTER/WFD  |
| ⊕                                       | SURFACE MOUNTED PANELBOARD   | ⊕      | EQUIPMENT CONNECTION   |
| ⊕                                       | RECESSED PANELBOARD  | ⊕      | SURFACE MOUNTED RACEWAY  |
| <b>FIRE ALARM / LIFE SAFETY</b>         |  |        |  |
| ⊕                                       | STROBE, MOUNT 84" AFF TO TOP OR 6" BELOW CEILING WHICHEVER IS LOWER  | M      | MAGNETIC DOOR HOLDER   |
| ⊕                                       | SPEAKER, CEILING MOUNTED, W = WALL MOUNTED   | FS     | SPRINKLER FLOW SWITCH  |
| ⊕                                       | HORNSTROBE, MOUNT 84" AFF TO TOP OR 6" BELOW CEILING WHICHEVER IS LOWER  | TS     | SPRINKLER TAMPER SWITCH  |
| ⊕                                       | SPEAKER/STROBE, MOUNT 84" AFF TO TOP OR 6" BELOW CEILING WHICHEVER IS LOWER  | ⊕      | SPRINKLER BELL   |
| ⊕                                       | HORN (SOUNDER), MOUNT 84" AFF TO TOP OR 6" BELOW CEILING WHICHEVER IS LOWER  | FAACP  | FIRE ALARM CONTROL PANEL   |
| ⊕                                       | PULL STATION, MOUNT 48" AFF TO CENTER  | FAA    | FIRE ALARM ANNUNCIATOR PANEL   |
| ⊕                                       | HEAT DETECTOR  | ARS    | AREA OF REFUGE STATION   |
| ⊕                                       | SMOKE DETECTOR   | ARL    | AREA OF REFUGE LIGHTING  |
| ⊕                                       | DUCT SMOKE DETECTOR  | ARM    | AREA OF REFUGE MASTER PANEL  |
| ⊕                                       | ELEVATOR SMOKE DETECTOR  | ELM    | ELEVATOR LANDING MASTER PANEL  |
| ⊕                                       | SMOKE DETECTOR WITH SOUNDER BASE   | ELS    | ELEVATOR LANDING STATION   |
| ⊕                                       | CARBON MONOXIDE DETECTOR   |        |  |
| <b>MISCELLANEOUS</b>                    |  |        |  |
| ⊕                                       | CONDUIT STUB THROUGH WALL BUSHED EACH END  | ⊕      | PUSHBUTTON PROVIDE JUNCTION BOX AND CONDUIT, MOUNT AT SWITCH HEIGHT  |
| ⊕                                       | CONDUIT WITH BUSHING ON END  | ⊕      | GROUND ROD   |
| ⊕                                       | ELECTRICAL HOMERUN, CIRCUIT AS SHOWN   | ⊕      | EXO-THERMIC WELD CONNECTION  |
| ⊕                                       | *PNL-X SHARED ELECTRICAL HOMERUN WHEN WIRE TAG HAS (*) ASTERISK PRECEDING PANEL-CIRCUIT INFO                           | N      | NURSE CALL DOME LIGHT  |
| ⊕                                       | ITEMS AND/OR DEVICES CIRCUITED TOGETHER  | P      | NURSE CALL PULL CORD   |
| ⊕                                       | ITEMS AND/OR DEVICES CIRCUITED TOGETHER, BUT SWITCHED SEPARATELY   | ⊕      | DETAIL OR SECTION NUMBER SHEET NUMBER  |
| <b>ABBREVIATIONS</b>                    |  |        |  |
| AC                                      | ABOVE COUNTER  | HC     | HVAC CONTRACTOR  |
| AFF                                     | ABOVE FINISHED FLOOR   | IG     | ISOLATED GROUND  |
| AFG                                     | ABOVE FINISHED GRADE   | IMP    | INSULATED METAL PANEL  |
| BZ                                      | BUG ZAPPER   | LCP    | LIGHTING CONTROL PANEL   |
| DISC                                    | DISCONNECT   | NL     | NIGHT LIGHT  |
| DW                                      | DISHWASHER   | NTS    | NOT TO SCALE   |
| EC                                      | ELECTRICAL CONTRACTOR  | OC     | ON CENTER  |
| ELEV                                    | ELEVATION  | PC     | PLUMBING CONTRACTOR  |
| EM                                      | EMERGENCY  | PNL    | PANELBOARD   |
| ETR                                     | EXISTING TO REMAIN   | REF    | REFRIGERATOR   |
| EWV                                     | ELECTRIC WATER COOLER  | UC     | UNDER COUNTER  |
| FF                                      | FOOT FOAMER  | 3R     | NEMA 3R  |
| FPC                                     | FIRE PROTECTION CONTRACTOR   | 4X     | NEMA 4X  |
| GC                                      | GENERAL CONTRACTOR/CONSTRUCTION MANAGER  | WT     | WATER TIGHT  |
| GDSP                                    | GARBAGE DISPOSAL   | XFMR   | TRANSFORMER  |
| GFI                                     | GROUND FAULT CIRCUIT INTERRUPTER   |        |  |
| <b>FIRE RATED WALLS</b>                 |  |        |  |
| ⊕                                       | FIRE - 1 HOUR  | ⊕      | FIRE - 3 HOUR  |
| ⊕                                       | FIRE - 2 HOUR  | ⊕      | FIRE - 4 HOUR  |
| <b>COMMUNICATION</b>                    |  |        |  |
| ⊕                                       | TELEPHONE OUTLET, 1" C STUB INTO ACCESSIBLE SPACE, MOUNT 18" AFF TO CENTER, W = WALL MOUNT 52" AFF TO CENTER           | ⊕      | CEILING MOUNTED SPEAKER  |
| ⊕                                       | DATA OUTLET, 1" C STUB INTO ACCESSIBLE SPACE, MOUNT 18" AFF TO CENTER, X = NUMBER OF DATA DROPS PER BOX                | ⊕      | WALL MOUNTED SPEAKER   |
| ⊕                                       | COMBINATION TELEPHONE/DATA, 1" C STUB INTO ACCESSIBLE SPACE, MOUNT 18" AFF TO CENTER                                   | ⊕      | TELEVISION OUTLET MOUNT 18" AFF TO CENTER  |
| ⊕                                       | LOCAL VOLUME CONTROL   |        |  |

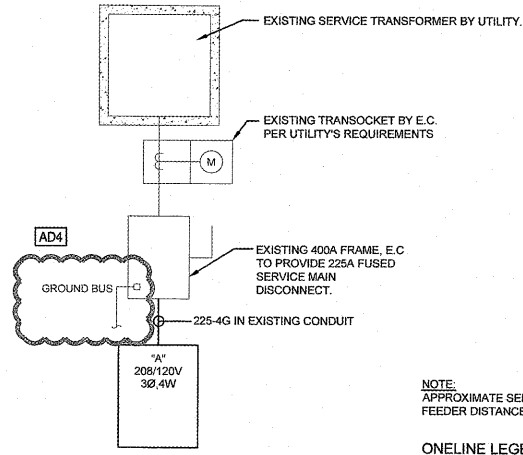
**GENERAL ELECTRICAL NOTES**

- SEE ARCHITECTURAL REFLECTED CEILING AND ELEVATION PLANS FOR LOCATION OF ALL LIGHTING FIXTURES. LOCATE FIXTURES IN ACCORDANCE WITH CEILING AND ELEVATION PLANS.
- ONELINE DIAGRAMS AND RISER DIAGRAMS ARE A DIAGRAMMATIC REPRESENTATION TO AID THE CONTRACTOR IN UNDERSTANDING THE FUNCTION AND OPERATION OF THE SYSTEMS. E.C. SHALL REVIEW THE ONELINES, RISERS, AND FLOOR PLANS FOR THE EXACT QUANTITIES AND LOCATION OF ALL EQUIPMENT. E.C. SHALL FURNISH AND INSTALL ALL EQUIPMENT SHOWN ON ANY OR ALL OF THESE DIAGRAMS AND DRAWINGS. DETAILED WIRING DIAGRAMS SHOWING ACTUAL WIRING FOR THE SYSTEMS FURNISHED SHALL BE A PART OF THE SHOP DRAWING SUBMITTAL.
- DEVICE LOCATIONS MAY BE DISTORTED FOR CLARITY. LOCATE DEVICES SYMMETRICALLY WITH THE ARCHITECTURAL ELEMENTS.
- CONTRACTOR SHALL COORDINATE WITH THE OTHER TRADES TO VERIFY SPACES ARE CLEAR OF OBSTRUCTIONS. MAINTAIN MAXIMUM HEADROOM AND SPACE CONDITION AT ALL POINTS IN THE BUILDING. WHERE HEADROOM OR SPACE CONDITIONS APPEAR INADEQUATE, NOTIFY ARCHITECT/ENGINEER BEFORE PROCEEDING WITH THE INSTALLATION.
- FURNISH OTHER TRADES ADVANCE INFORMATION ON LOCATIONS AND SIZES OF PIPING, DUCTWORK, EQUIPMENT, FRAMES, BOXES, SLEEVE AND OPENINGS NEEDED FOR WORK. FURNISH INFORMATION AND SHOP DRAWINGS TO PERMIT TRADES AFFECTED TO INSTALL THEIR WORK PROPERLY AND WITHOUT DELAY.
- SEE HVAC AND PLUMBING PLANS FOR LOCATIONS OF HEATING, VENTILATING, AIR CONDITIONING AND PLUMBING EQUIPMENT. DO NOT REFERENCE ELECTRICAL DRAWINGS FOR EXACT LOCATION.
- SCHEDULE REQUIRED POWER, TELEPHONE, OR DATA OUTAGES IN OCCUPIED AREAS OF THE BUILDING WITH THE OWNER. CONTRACTOR SHALL WORK UNTIL SERVICE IS RESTORED. OUTAGE WORK SHALL BE DONE AFTER OR BEFORE NORMAL WORKING HOURS, ON WEEKENDS OR HOLIDAYS.

**BRANCH CIRCUIT FEEDER SCHEDULE**

| AMP/POLE          | CONDUCT. | GND. CONDUCT. | IN.    |
|-------------------|----------|---------------|--------|
| 15A/1P OR 15A/2P  | (2) #12  | #12           |        |
| 20A/1P OR 20A/2P  | (2) #12  | #12           | 1/2"   |
| 15A/3P OR 20A/3P  | (3) #12  | #12           | 1/2"   |
| 25A/1P OR 25A/2P  | (2) #10  | #10           | 3/4"   |
| 30A/1P OR 30A/2P  | (2) #10  | #10           | 3/4"   |
| 25A/3P OR 30A/3P  | (3) #10  | #10           | 3/4"   |
| 35A/1P OR 35A/2P  | (2) #8   | #10           | 3/4"   |
| 40A/1P OR 40A/2P  | (2) #8   | #10           | 3/4"   |
| 35A/3P OR 40A/3P  | (3) #8   | #10           | 3/4"   |
| 45A/1P OR 45A/2P  | (2) #6   | #8            | 1"     |
| 45A/3P OR 40A/3P  | (3) #6   | #8            | 1"     |
| 50A/1P OR 50A/2P  | (2) #6   | #10           | 1"     |
| 60A/1P OR 60A/2P  | (2) #4   | #6            | 1 1/4" |
| 60A/3P OR 40A/3P  | (3) #4   | #6            | 1 1/4" |
| 100A/3P OR 40A/3P | (3) #2   | #6            | 1 1/2" |
| 125A/3P           | (3) #1   | #6            | 1 1/2" |

\* PROVIDE BRANCH CIRCUIT FEEDERS AS NOTED ABOVE, UNLESS NOTED OTHERWISE.

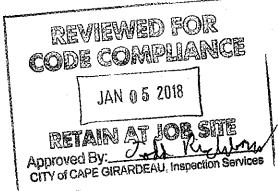


**ONELINE DIAGRAM**

NO SCALE

NOTE: APPROXIMATE SERVICE FEEDER DISTANCE IS 30'

**ONELINE LEGEND**  
 --- = EXISTING TO REMAIN  
 --- = NEW  
 --- = DEMOLISHED



**3 Ø FEEDER SCHEDULES**

| 3 WIRE FEEDERS     |                 |   | 4 WIRE FEEDERS     |                 |   |
|--------------------|-----------------|---|--------------------|-----------------|---|
| FEEDER DESIGNATION | CONDUIT SIZE(S) | CONDUCTORS & GROUNDING CONDUCTOR(S) SIZES | FEEDER DESIGNATION | CONDUIT SIZE(S) | CONDUCTORS & GROUNDING CONDUCTOR(S) SIZES |
| 20 - 3G            | 1/2"            | (3) #12 & #12 GND                         | 20 - 4G            | 1/2"            | (4) #12 & #12 GND                         |
| 25 - 3G            | 3/4"            | (3) #10 & #10 GND                         | 25 - 4G            | 3/4"            | (4) #10 & #10 GND                         |
| 30 - 3G            | 3/4"            | (3) #10 & #10 GND                         | 30 - 4G            | 3/4"            | (4) #10 & #10 GND                         |
| 35 - 3G            | 3/4"            | (3) #8 & #10 GND                          | 35 - 4G            | 3/4"            | (4) #8 & #10 GND                          |
| 40 - 3G            | 3/4"            | (3) #8 & #10 GND                          | 40 - 4G            | 3/4"            | (4) #8 & #10 GND                          |
| 45 - 3G            | 3/4"            | (3) #8 & #10 GND                          | 45 - 4G            | 3/4"            | (4) #8 & #10 GND                          |
| 50 - 3G            | 1"              | (3) #6 & #10 GND                          | 50 - 4G            | 1"              | (4) #6 & #10 GND                          |
| 60 - 3G            | 1"              | (3) #4 & #8 GND                           | 60 - 4G            | 1-1/4"          | (4) #4 & #8 GND                           |
| 70 - 3G            | 1"              | (3) #4 & #8 GND                           | 70 - 4G            | 1-1/4"          | (4) #4 & #8 GND                           |
| 80 - 3G            | 1"              | (3) #3 & #8 GND                           | 80 - 4G            | 1-1/4"          | (4) #3 & #8 GND                           |
| 90 - 3G            | 1-1/4"          | (3) #2 & #8 GND                           | 90 - 4G            | 1-1/4"          | (4) #2 & #8 GND                           |
| 100 - 3G           | 1-1/4"          | (3) #2 & #8 GND                           | 100 - 4G           | 1-1/4"          | (4) #2 & #8 GND                           |
| 110 - 3G           | 1-1/4"          | (3) #1 & #8 GND                           | 110 - 4G           | 1-1/2"          | (4) #1 & #8 GND                           |
| 125 - 3G           | 1-1/4"          | (3) #1 & #8 GND                           | 125 - 4G           | 1-1/2"          | (4) #1 & #8 GND                           |
| 200 - 3G           | 2"              | (3) #3/0 & #2 GND                         | 200 - 4G           | 2"              | (4) #3/0 & #2 GND                         |
| 225 - 3G           | 2"              | (3) #4/0 & #2 GND                         | 225 - 4G           | 2-1/2"          | (4) #4/0 & #2 GND                         |
| 400 - 3G           | 3"              | (3) 500 kcmil & #1/0 GND                  | 400 - 4G           | 3-1/2"          | (4) 500 kcmil & #1/0 GND                  |

NOTE: Ground Conductor Size May Be Reduced Based On Overcurrent And/Or Ground Fault Protection Equipment (NEC 250)  
 NOTE: Conductor Sizes Listed Above Are For Copper.

| DESCRIPTION                                | BKR  | LOAD (VA) | A    | B    | C    | LOAD (VA) | BKR  | DESCRIPTION                 |
|--|------|-----------|------|------|------|-----------|------|-----------------------------|
| 1 LIGHTS EXITS / NIGHT LIGHTS              | 20/1 | 310       | 930  |      |      | 620       | 20/1 | RECEP MECH ROOM             |
| 3 LIGHTS CARE AREAS & LABS                 | 20/1 | 1005      |      | 1185 |      | 180       | 20/1 | RECEP MECH ROOM             |
| 5 LIGHTS OFFICES, PUBLIC SPACES, AND B.O.H | 20/1 | 995       |      |      | 1795 | 800       | 20/1 | RECEP PHONE BOARD           |
| 7 MISC BATHROOM FANS, CIRC PUMP            | 20/1 | 240       | 960  |      |      | 720       | 20/1 | RECEP BREAK ROOM            |
| 9 MISC CONTACTOR CIRCUIT                   | 20/1 | 80        |      | 1580 |      | 1500      | 20/1 | RECEP BREAK ROOM MW         |
| 11 RECEP LAB                               | 20/1 | 360       |      |      | 1260 | 900       | 20/1 | RECEP BREAK ROOM REF        |
| 13 RECEP LAB                               | 20/1 | 360       | 1080 |      |      | 720       | 20/1 | RECEP HALLWAY / WOMEN'S     |
| 15 RECEP LAB                               | 20/1 | 360       |      | 1360 |      | 1000      | 20/1 | MOTOR HAND DRYER            |
| 17 RECEP LAB / LAB DAMPER                  | 20/1 | 360       |      |      | 1080 | 720       | 20/1 | RECEP INT. WAITING CONSULT. |
| 19 RECEP LAB                               | 20/1 | 360       | 1080 |      |      | 720       | 20/1 | RECEP RECEPTION / MEN'S     |
| 21 RECEP LAB                               | 20/1 | 360       |      | 1260 |      | 900       | 20/1 | RECEP TREATMENT #7          |
| 23 RECEP LAB                               | 20/1 | 360       |      |      | 1260 | 900       | 20/1 | RECEP TREATMENT #7          |
| 25 RECEP LAB REF                           | 20/1 | 900       | 1440 |      |      | 540       | 20/1 | RECEP STERILIZATION         |
| 27 RECEP LAB                               | 20/1 | 180       |      | 680  |      | 500       | 20/1 | RECEP STERILIZATION CPU     |
| 29 RECEP LAB                               | 20/1 | 360       |      |      | 1260 | 900       | 20/1 | RECEP TREATMENT #6          |
| 31 RECEP LAB                               | 20/1 | 360       | 1800 |      |      | 1440      | 20/1 | RECEP TREATMENT #6          |
| 33 RECEP LAB                               | 20/1 | 360       |      | 1800 |      | 1440      | 20/1 | RECEP TREATMENT #5          |
| 35 SPARE                                   | 20/1 |           |      |      | 1000 | 1000      | 20/1 | RECEP TREATMENT #5          |
| 37 RECEP TREATMENT #1                      | 20/1 | 1080      | 2520 |      |      | 1440      | 20/1 | RECEP PASS THROUGH X-RAY    |
| 39 RECEP TREATMENT #2                      | 20/1 | 1080      |      | 2520 |      | 1440      | 20/1 | RECEP TREATMENT #2          |
| 41 RECEP MANAGER / DOCTOR OFFICE           | 20/1 | 540       |      |      | 1340 | 800       | 20/1 | RECEP INTRADURAL X-RAY      |
| 43 MOTOR HAND DRYER                        | 20/1 | 1000      | 2000 |      |      | 1000      | 20/1 | MISC INTRADURAL X-RAY       |
| 45 RECEP BUSINESS OFFICE                   | 20/1 | 720       |      | 1220 |      | 500       | 20/1 | RECEP BOTTLE WASHER         |
| 47 RECEP BUSINESS OFFICE                   | 20/1 | 720       |      |      | 1920 | 1200      | 20/1 | MISC SIGNAGE                |
| 49 RECEP BUSINESS OFFICE                   | 20/1 | 720       |      | 1920 |      | 1200      | 20/1 | MISC SIGNAGE                |
| 51 RECEP BUSINESS OFFICE                   | 20/1 | 360       |      | 1560 |      | 1200      | 20/1 | MISC SIGNAGE                |
| 53 LIGHTS EXISTING SITE LIGHTS(2)          | 20/1 | 1500      |      |      | 2700 | 1800      | 20/1 | MISC SIGNAGE                |
| 55 LIGHTS EXISTING WALL SCONCES(2)         | 20/1 | 200       | 200  |      |      | 0         | 20/1 | SPARE                       |
| 57 SPARE                                   | 20/1 |           |      |      |      |           | 20/1 | SPARE                       |
| 59 SPARE                                   | 20/1 |           |      |      |      |           | 20/1 | SPARE                       |
| 61 SPARE                                   | 20/1 |           |      |      |      |           | 20/1 | SPARE                       |
| 63 SPARE                                   | 20/1 |           |      |      |      |           | 20/1 | SPARE                       |
| 65 RECEP ROOFTOP                           | 20/1 | 360       |      |      | 610  | 250       | 20/2 | MISC WH-1                   |
| 67 MOTOR RTAC-1                            | 3/3  | 3879      | 129  |      |      | 1250      | 1/2  | MISC                        |
| 69 MOTOR                                   | 3/3  | 3879      |      |      |      | 1000      | 20/2 | RECEP PANORAMIC XRAY        |
| 71 MOTOR                                   | 3/3  | 3879      |      |      |      | 1000      | 1/2  | RECEP                       |
| 73 MOTOR RTAC-2                            | 3/3  | 3598      | 52   |      |      | 1650      | 20/2 | RECEP STERILIZER            |
| 75 MOTOR                                   | 3/3  | 3598      |      | 5248 |      | 1650      | 1/2  | RECEP                       |
| 77 MOTOR                                   | 3/3  | 3598      |      |      | 5298 | 1700      | 30/2 | MOTOR VACUUM SYSTEM         |
| 79 MOTOR RTAC-3                            | 30/3 | 2879      | 4579 |      |      | 1700      | 1/2  | MOTOR                       |
| 81 MOTOR                                   | 3/3  | 2879      |      | 4339 |      | 1460      | 30/2 | MOTOR AIR COMPRESSOR        |
| 83 MOTOR                                   | 3/3  | 2879      |      |      |      | 1460      | 1/2  | MOTOR                       |

TOTAL VA / PHASE 27886 26631 28741  
 TOTAL AMPS / PHASE 232.4 221.9 239.5  
 TOTAL CONNECTED 83.3  
 TOTAL DIVERSIFIED KW 72.1  
 TOTAL DIVERSIFIED 200.2  
 CONNECTED PANEL SIZE 231.1

(1) CONTRACTOR SHALL VERIFY AVAILABLE FAULT CURRENT PRIOR TO ORDERING EQUIPMENT  
 (2) DEMOLISHED CIRCUIT IS EXISTING WITH WIRES COILED IN VICINITY OF PANELBOARD.  
 - G SPARE DENOTES GFI TYPE BREAKER

**Order Plans**