

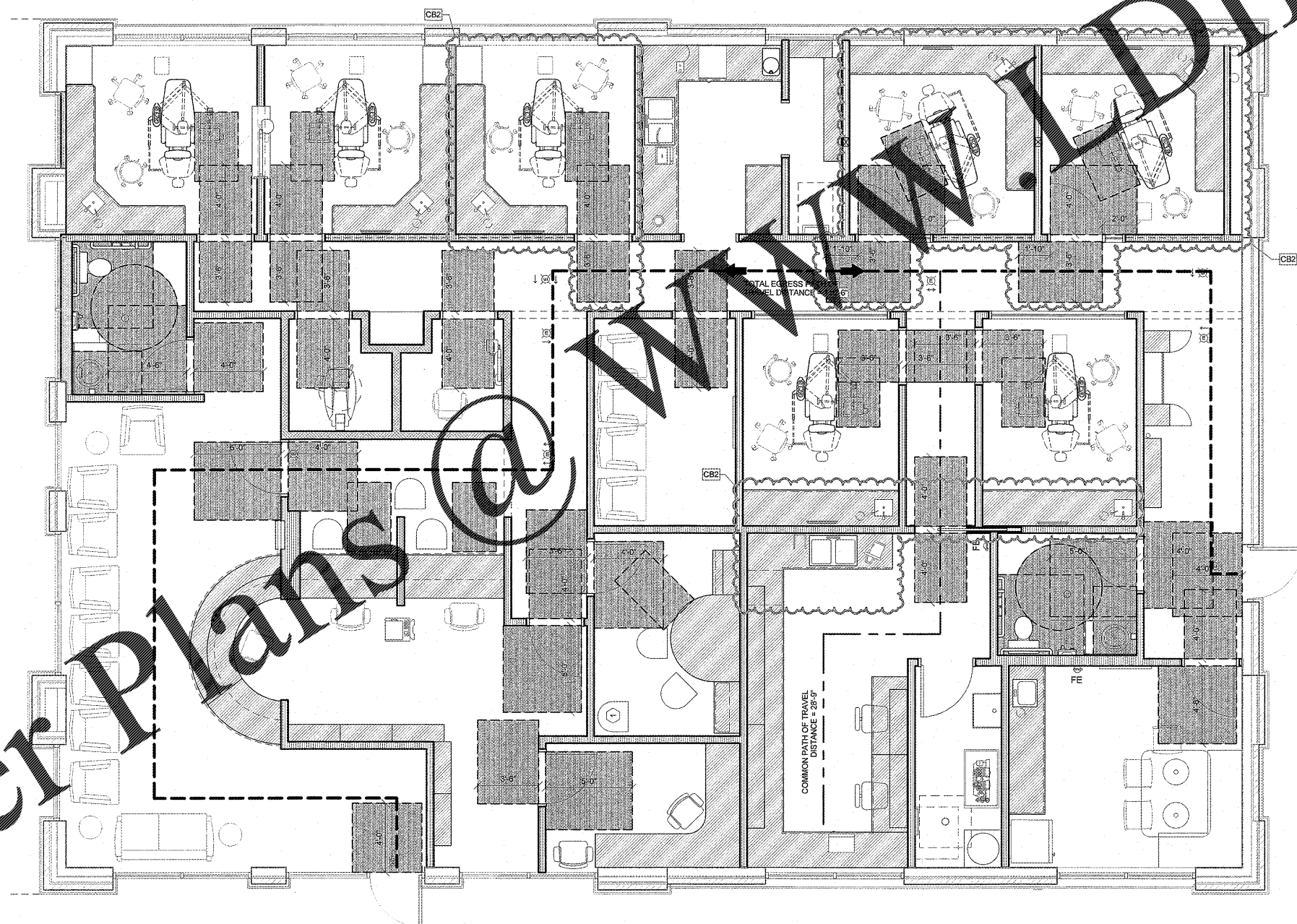
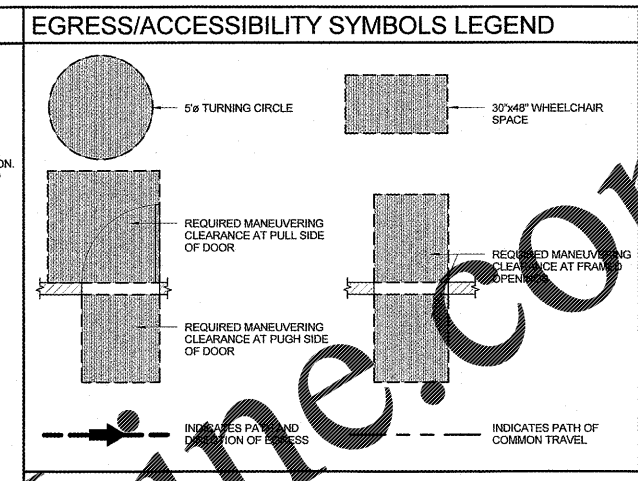
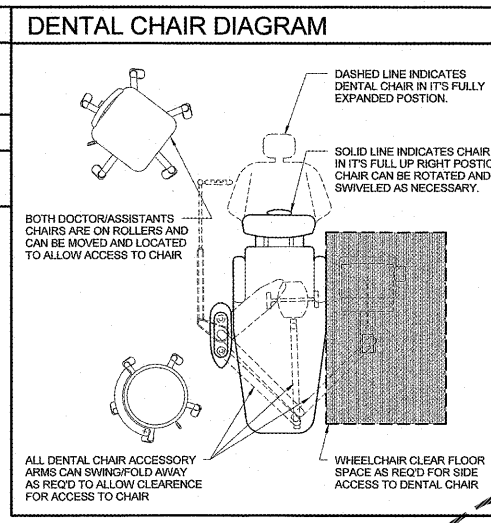
EGRESS/ACCESSIBILITY KEYNOTES

① CHAIR SHALL BE RELOCATED AS NECESSARY TO ALLOW ACCESS FOR WHEELCHAIR SPACE

CONTRACTOR TO COORDINATE EXIT LIGHT LOCATIONS WITH LOCAL INSPECTION AND FIRE MARSHAL PRIOR TO INSTALL

EGRESS/ACCESSIBILITY NOTES

ASPEN DENTAL STAFF WILL BE AVAILABLE TO ASSIST ANY PERSON(S) WITH DISABILITY TO MANUEVER AROUND THE FACILITY AS REQ'D PER THAT PATRONS REQUEST



EXCEL ENGINEERING and ARCHITECTURE, P.C.
 100 GAMBELT DRIVE
 FOND DU LAC, WI 54935
 PHONE: (920) 926-9800
 WWW.EXCELENGINEER.COM

COLLABORATION

AspenDental

PROJECT INFORMATION

PROJECT NUMBER 1712680

TENANT BUILD-OUT FOR:
ASPEN DENTAL
 3070 WILLIAM ST. • CAPE GIRARDEAU, MO 63703

PROFESSIONAL SEAL

SHEET DATES

SHEET ISSUE	JUNE 1, 2017
REVISIONS	
AD1	JUNE 6, 2017
AD2	JUNE 22, 2017
CB2	DEC. 19, 2017

REVIEWED FOR CODE COMPLIANCE

JAN 05 2018

RETAIN AT JOB SITE
 Approved By: *[Signature]*
 CITY OF CAPE GIRARDEAU, Inspection Services

ACCESSIBILITY/EGRESS PLAN
 SCALE: 1/4" = 1'-0"

SHEET INFORMATION

EGRESS/ACCESSIBILITY PLAN

SHEET NUMBER

AE1.1

2018 © EXCEL ENGINEERING, INC.

Order Plans @ www.dline.com