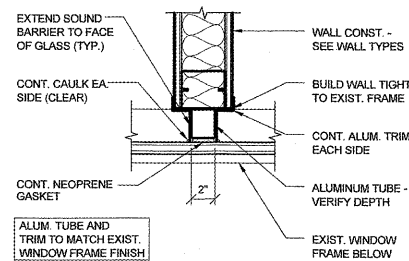
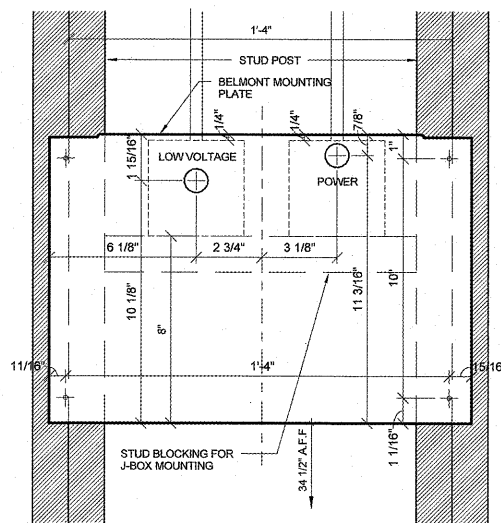


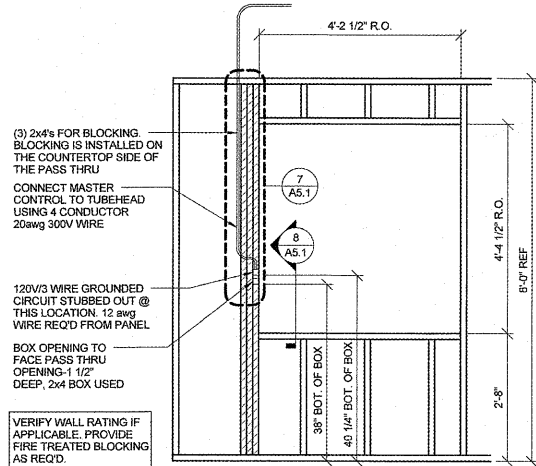
8 PASS THRU X-RAY PLATE DETAIL  
A5.1 NOT TO SCALE



9 WALL CLOSURE DETAIL  
A5.1 NOT TO SCALE



4 BELMONT 097 X-RAY PLATE DETAIL  
A5.1 SCALE: 3" = 1'-0"

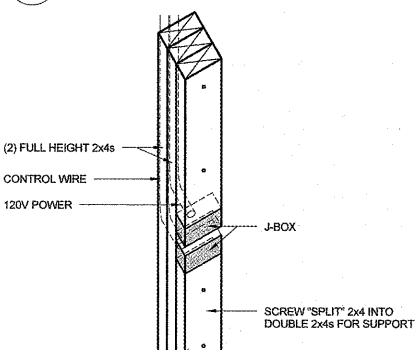


5 PASS THRU X-RAY  
A5.1 NOT TO SCALE

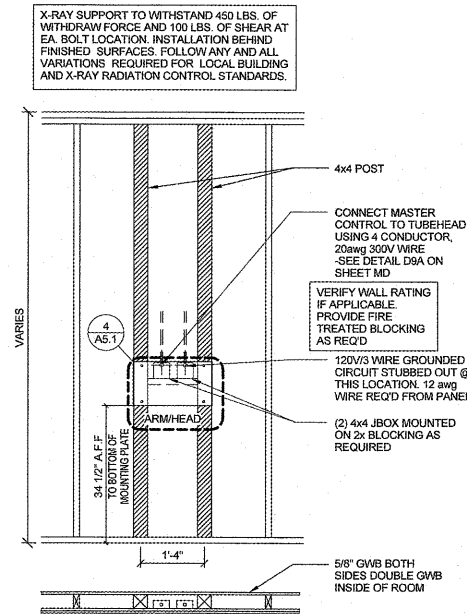
FIRE EXTINGUISHER SPECIFICATION:

- MANUFACTURER: J.L. INDUSTRIES, INC.
- FIRE EXTINGUISHER: "COSMIC" 10E
- 10 LB. CAPACITY; 4A-80BC RATING
- BRACKET: MARK 18B846 WALL BRACKET

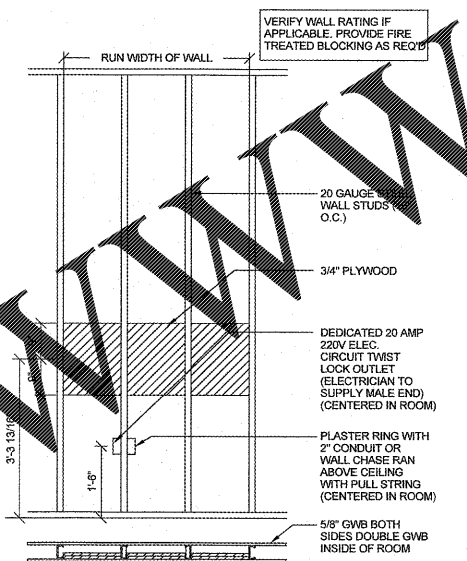
6 FIRE EXTINGUISHER DETAIL  
A5.1 SCALE: 1/2" = 1'-0"



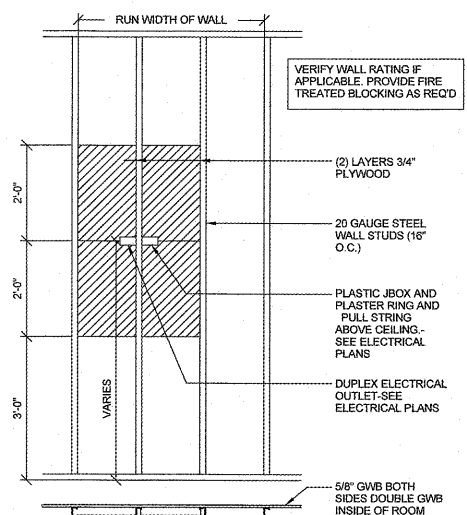
7 PASS THRU X-RAY ISOMETRIC  
A5.1 NOT TO SCALE



1 BELMONT 097 X-RAY SUPPORT  
A5.1 SCALE: 1/2" = 1'-0"



2 PANORAMIC X-RAY SUPPORT  
A5.1 NOT TO SCALE



3 PLASMA TV SUPPORT  
A5.1 SCALE: 1/2" = 1'-0"

GENERAL ACCESSIBILITY NOTES

- THRESHOLDS**
- FLOOR(S) OR LANDING(S) ARE NOT MORE THAN 1/2" LOWER THAN THE TOP OF THE THRESHOLD OF THE DOORWAY.
  - PER 303.3 CHANGE IN LEVEL BETWEEN 1/4" AND 1/2" IS BEVELED AT A GRADIENT NOT TO EXCEED 1:2
  - DOORMATS ARE SECURELY ATTACHED (ANCHORED OR RECESSED) AND HAVE A LEVEL LOOP, LEVEL CUT-IN/CUT-OUT PILE WITH PILE NOT EXCEEDING 1/2" IN HEIGHT.
  - EXPOSED EDGES OF DOORMAT(S) ARE FASTENED TO FLOOR SURFACES AND HAVE TRIM ALONG THE ENTIRE LENGTH OF THE EXPOSED EDGE.

- DOORS**
- MINIMUM OF 3'-0" IN WIDTH, 6'-8" IN HEIGHT.
  - OPENS A MINIMUM OF 90 DEGREES.
  - CLEAR WIDTH OF THE DOORWAY IS 32" MINIMUM.
  - DOUBLE DOORS / AUTOMATIC DOORS AT LEAST ONE DOOR MUST COMPLY WITH 1, 2 AND 3 ABOVE.
  - BOTTOM 10" OF DOOR HAS A SMOOTH, UNINTERRUPTED SURFACE THAT ALLOWS DOOR TO BE OPENED BY A WHEELCHAIR FOOTREST WITHOUT CREATING A TRAP OR HAZARDOUS CONDITION.

- DOOR HARDWARE**
- EXIT DOORS ARE OPERABLE FROM THE INSIDE WITHOUT THE USE OF A KEY OR ANY SPECIAL KNOWLEDGE OR EFFORT.
  - LATCHING AND LOCKING DEVICES THAT ARE HAND OPERATED ARE OPERABLE WITH A SINGLE EFFORT (EX. LEVER TYPE MECHANISMS OR PUSH-PULL TYPE).
  - OPERABLE HARDWARE IS NO HIGHER THAN 48" ABOVE FINISH FLOOR.
  - DOOR CLOSERS SHALL BE ADJUSTED SO THAT FROM AN OPEN POSITION OF 90 DEGREES THE TIME REQUIRED TO MOVE THE DOOR TO AN OPEN POSITION OF 12 DEGREES SHALL BE 5 SECONDS MINIMUM.
  - HANDLES, LATCHES, LOCKS AND OTHER OPERATING DEVICES ON ACCESSIBLE DOORS SHALL BE SHAPED THAT IS EASY TO GRASP WITH ONE HAND AND DOES NOT REQUIRE TIGHT GRASPING, TIGHT PINCHING, OR TWISTING OF THE WRIST TO OPERATE. LEVER OPERATED MECHANISMS, PUSH-TYPE MECHANISMS, AND U-SHAPED HANDLES ARE ACCEPTABLE DESIGNS. WHEN SLIDING DOORS ARE FULLY OPEN, OPERATING HARDWARE SHALL BE EXPOSED AND USABLE FROM BOTH SIDES. HARDWARE REQUIRED FOR ACCESSIBLE DOOR PASSAGE SHALL BE MOUNTED NO HIGHER THAN 48 INCHES A.F.F.

- CLEAR SPACE AT DOORS**
- GENERAL: REGARDLESS OF THE OCCUPANT LOAD, THERE SHALL BE A FLOOR OR LANDING ON EACH SIDE OF A DOOR.
- FLOOR OR LANDING ON EACH SIDE OF THE DOOR IS LEVEL AND CLEAR.
  - LEVEL AREA IN THE DIRECTION OF THE DOOR SWING IS A MINIMUM OF 60" IN LENGTH.
  - LEVEL AREA OPPOSITE THE DIRECTION OF THE DOOR SWING IS A MINIMUM OF 42-48" IN LENGTH, DEPENDING UPON DIRECTION OF APPROACH AND EXISTENCE OF LATCH AND CLOSER.
  - SURFACE SLOPE OF THE LEVEL AREA DOES NOT EXCEED 1:50 GRADIENT (2%).
  - MINIMUM STRIKE SIDE CLEARANCE ON PULL SIDE OF DOOR IS PROVIDED AT LANDING (PER 404.2.3.1).
  - MINIMUM LATCH SIDE CLEARANCE ON PUSH SIDE OF DOOR IS PROVIDED AT LANDING (PER 404.2.3.1).

- IDENTIFICATION SYMBOLS (FOR SANITARY FACILITIES)**
- THE INTERNATIONAL SYMBOL OF ACCESSIBILITY IS INSTALLED ON THE WALL ADJACENT TO THE LATCH SIDE OF THE DOOR. THE BORDER DIMENSIONS OF THIS PICTOGRAM SHALL BE A MINIMUM OF 6" IN HEIGHT.
  - VERBAL DESCRIPTION AS TO RESTROOM USAGE (I.E. MENS RESTROOM, ECT.) IS PLACED DIRECTLY BELOW THE SYMBOL OF ACCESSIBILITY.
  - THE CHARACTERS AND BACKGROUND OF THE SIGN IS EGGSHELL, MATTE OR OTHER NON-GLARE FINISH AND THE COLOR AND CONTRAST OF THE SIGN DISTINCTIVELY CONTRASTS WITH THE COLOR AND CONTRAST OF THE WALL.
- NOTE: THE REQUIRED COLOR OF THE SYMBOL OF ACCESSIBILITY CONSISTS OF A WHITE FIGURE ON A BLUE BACKGROUND. HOWEVER, THE APPROPRIATE ENFORCEMENT AGENCY MAY APPROVE SPECIAL SIGNS TO COMPLIMENT DECOR WHEN SUCH SIGNS PROVIDE ADEQUATE DIRECTION TO INDIVIDUALS WITH DISABILITIES.
- SIGNS ARE CENTERED ON THE WALL 60" A.F.F. AND 8" FROM EDGE OF SIGN TO EDGE OF DOOR FRAME.
  - LETTERS AND NUMERALS ARE RAISED 1/32" ARE SANSSERIF UPPERCASE CHARACTERS AND ARE ACCOMPANIED BY GRADE 2 BRAILLE. CHARACTERS ARE A MINIMUM 5/8" HIGH AND A MAXIMUM OF 2" HIGH.
  - MOUNTING LOCATION ALLOWS A PERSON TO APPROACH WITHIN 3" OF THE SIGNAGE WITHOUT ENCOUNTERING PROTRUDING OBJECTS OR STANDING WITHIN THE SWING OF A DOOR.
  - SIGNS CONTAINING TACTILE CHARACTERS SHALL BE LOCATED SO THAT A CLEAR FLOOR AREA 18" X 18" MINIMUM, CENTERED ON THE TACTILE CHARACTERS, IS PROVIDED BEYOND THE ARC OF ANY DOOR SWING THE CLOSED POSITION AND 45 DEGREE OPEN POSITION.

- SANITATION FACILITIES**
- ACCESSIBLE UNITS SHALL BE IDENTIFIED BY THE INTERNATIONAL SYMBOL OF ACCESSIBILITY.
  - EXCEPT AT DOORS, THE MINIMUM CLEAR WIDTH OF AN ACCESSIBLE ROUTE IN FACILITY IS 36".
  - ENTRY DOOR HAS PUSH AND PULL FUNCTION (NO LATCHING DEVICE) WITH CLOSER.
  - SUFFICIENT SPACE FOR WHEELCHAIR MEASURING 30" X 48" TO ENTER ROOM AND PERMIT THE DOOR TO CLOSE IS PROVIDED.
  - A CLEAR SPACE OF SUFFICIENT SIZE TO INSCRIBE A 60" DIAMETER CIRCLE IS PROVIDED WITHIN THE SANITARY FACILITY ROOM.
  - 60" SPACE IS CLEAR OF OBJECTS FROM THE FLOOR TO A HEIGHT OF 27".

- WATER CLOSETS**
- 30" WIDE X 48" DEEP MINIMUM CLEAR ACCESS IN FRONT OF FIXTURE (ONE FIXTURE ONLY REQUIRED).
  - ONE FULL UNOBSTRUCTED SIDE OF THE CLEAR FLOOR OR GROUND SPACE ADJOINS OR OVERLAPS AN ACCESSIBLE ROUTE OR ADJOINS ANOTHER WHEELCHAIR CLEAR FLOOR SPACE.
  - 44" MAXIMUM HEIGHT OF FLUSH VALVE ABOVE FLOOR.
  - 5 LB. MAXIMUM PRESSURE TO OPERATE FLUSH VALVE.
  - FLOOR SURFACES ARE SMOOTH, HARD AND NON-ABSORBENT EXTENDING UPWARD A MINIMUM OF 6" ONTO THE WALLS.
  - WALLS WITHIN 24" OF FRONT AND SIDES OF URINAL ARE SMOOTH, HARD AND NON-ABSORBENT TO 48" IN HEIGHT AND ARE NOT ADVERSELY AFFECTED BY MOISTURE.
- ACCESSORIES IN SANITARY FACILITIES**
- MINIMUM 30 X 48 CLEAR FLOOR OR GROUND SPACE IS PROVIDED TO ALLOW FORWARD OR PARALLEL APPROACH TO ACCESSORIES.
  - ONE FULL UNOBSTRUCTED SIDE OF THE CLEAR FLOOR OR GROUND SPACE ADJOINS OR OVERLAPS AN ACCESSIBLE ROUTE OR ADJOINS ANOTHER WHEELCHAIR CLEAR FLOOR SPACE.
  - MIRROR(S) IS MOUNTED WITH THE BOTTOM OF THE REFLECTIVE SURFACE EDGE NO HIGHER THAN 40" A.F.F. AND WITH THE TOP OF THE REFLECTIVE SURFACE EDGE NO LOWER THAN 74" A.F.F.
  - OPERABLE PARTS (INCLUDING COIN SLOTS) OF ALL FIXTURES OR ACCESSORIES ARE LOCATED A MAXIMUM OF 40" ABOVE FLOOR (I.E. SOAP DISPENSERS, TOWELS, TOILET SEAT COVERS, AUTO-DRYERS, SANITARY NAPKIN DISPENSERS, WASTE RECEPTACLES, ECT.).
  - CONTROLS AND OPERATING MECHANISMS ARE OPERABLE WITH ONE HAND AND DO NOT REQUIRE TIGHT GRASPING, PINCHING OR TWISTING OF THE WRIST.
  - THE FORCE TO ACTIVATE CONTROLS IS 5 LB. MAXIMUM.

- COAT HOOKS AND SHELVES**
- ACCESSIBLE COAT HOOKS PROVIDED WITHIN THE ROOM SHALL ACCOMMODATE A FORWARD REACH OR SIDE REACH COMPLYING W/ ANSI A117.1 SEC 308.
  - WHERE SHELVES ARE PROVIDED, A PROTON OF SHELVING SHALL BE MOUNTED AT 40" MIN. AND 48" MAX. A.F.F.

REVIEWED FOR CODE COMPLIANCE  
JAN 05 2018  
RETAILED AT JOB SITE  
Approved by: [Signature]  
CITY OF CAPE GIRARDEAU Inspection Services

- CLEAR FLOOR SPACE FOR WATER CLOSETS IN STALLS SHALL COMPLY WITH DIAGRAMS ON THIS SHEET. CLEAR FLOOR SPACE MAY BE ARRANGED TO ALLOW EITHER A RIGHT HANDED OR A LEFT HANDED APPROACH.
- 18 BETWEEN CENTER OF WATER CLOSET AND SIDE-WALL CORNER.
- TOILET SEATS SHALL NOT BE SPRUNG TO RETURN TO A LIFTED POSITION.
- TOP OF TOILET SEAT IS 17"-19" FROM FLOOR SURFACE.
- FLUSH VALVE IS ON WIDE SIDE OF TOILET AREA.
- 44" MAXIMUM FROM FLOOR TO FLUSH VALVE.
- 5 LB. MAXIMUM FORCE TO OPERATE FLUSH VALVE.
- WALLS WITHIN COMPARTMENT ARE SMOOTH, HARD AND NON-ABSORBENT TO 48" IN HEIGHT AND ARE NOT ADVERSELY AFFECTED BY MOISTURE.
- FLOOR SURFACES OF TOILET ROOM ARE SMOOTH, HARD AND NON-ABSORBENT BASE SHALL EXTEND UPWARD A MINIMUM OF 6" ONTO WALLS.
- SIDE GRAB BAR IS A MINIMUM OF 42" LONG.
- THE FORWARD END OF THE GRAB BAR IS LOCATED A MINIMUM OF 54" FROM THE BACK WALL.
- SIDE GRAB BAR BEGINS A MAXIMUM OF 12" FROM THE REAR WALL.
- REAR GRAB BAR IS A MINIMUM 36" LONG WITH THE ADDITIONAL LENGTH PROVIDED ON TRANSFER SIDE OF WATER CLOSET.
- REAR GRAB BAR BEGINS A MAXIMUM OF 6" FROM THE CORNER OF THE WALL ON THE TOILET SEAT.
- DIAMETER OF THE GRAB BAR(S) IS 1 1/4" - 1 1/2" OR SHAPE PROVIDES EQUIVALENT GRIPPING SURFACE.
- CLEARANCE BETWEEN THE GRAB BAR(S) AND WALL IS 1/2" AND PARALLEL TO FLOOR (FOR TANK TYPE TOILETS, 38" MAY BE ALLOWED IF TANK OBSTRUCTS PLACEMENT OF BAR).
- GRAB BARS ARE MOUNTED AT 33" MIN. - 36" MAX. TO TOP OF BAR.
- BAR IS SMOOTH WITH A MINIMUM RADIUS OF 18".
- MINIMUM STRUCTURAL STRENGTH OF GRAB BAR(S) WILL SUPPORT A 250 LB. POINT LOAD.
- GRAB BARS DO NOT ROTATE WITHIN THEIR FITTINGS.
- SURFACE OF WALL ADJACENT TO GRAB BAR(S) IS FREE OF SHARP OR ABRASIVE ELEMENTS.
- TOILET PAPER DISPENSERS SHALL COMPLY WITH SECTION 604.7 AND SHALL BE 7" MINIMUM AND 9" MAXIMUM IN FRONT OF THE WATER CLOSET MEASURED TO THE CENTER LINE OF THE DISPENSER.
- THE OUTLET OF THE DISPENSER SHALL BE 14" MINIMUM AND 19" MAXIMUM ABOVE THE FLOOR. THERE SHALL BE A CLEARANCE OF 1 1/2" MINIMUM BELOW THE GRAB BAR.
- DISPENSERS SHALL NOT BE A TYPE THAT CONTROL DELIVERY OR DO NOT ALLOW CONTINUOUS PAPER FLOW.

- LAVATORIES**
- MINIMUM 30" X 48" CLEAR SPACE IS PROVIDED IN FRONT OF LAVATORY THAT ALLOWS FORWARD APPROACH.
  - REQUIRED CLEAR SPACE ADJOINS OR OVERLAPS AN ACCESSIBLE ROUTE AND EXTENDS A MAXIMUM OF 19" UNDERNEATH THE LAVATORY.
  - 34" MAXIMUM HEIGHT OF RIM OR COUNTER ABOVE FLOOR SURFACE.
  - 29" MINIMUM CLEARANCE FROM BOTTOM OF APRON TO THE FLOOR.
  - KNEE CLEARANCE UNDER FRONT LIP IS A MINIMUM OF 27" HIGH, 30" WIDE, AND EXTENDS A MINIMUM OF 8" IN DEPTH FROM THE FRONT OF THE LAVATORY.
  - TOE CLEARANCE UNDER LAVATORY IS A MINIMUM OF 9" HIGH, 30" WIDE, AND EXTENDS A MINIMUM OF 17" IN DEPTH FROM THE FRONT OF THE LAVATORY.
  - DRAIN AND HOT WATER PIPING IS INSULATED OR CONFIGURED TO PREVENT CONTACT.
  - THERE ARE NO SHARP OR ABRASIVE ELEMENTS UNDER LAVATORY.
  - FAUCETS ARE LEVER TYPE, ELECTRONICALLY ACTIVATED OR APPROVED SELF CLOSING VALVES (MIN. 10 SECONDS OPEN FLOW).
  - FAUCETS ARE OPERABLE WITH ONE HAND AND DO NOT REQUIRE TIGHT GRASPING, PINCHING OR TWISTING OF THE WRIST.
  - 5 LB. MAXIMUM FORCE REQUIRED TO ACTIVATE CONTROLS.

- WATER CLOSETS**
- 30" WIDE X 48" DEEP MINIMUM CLEAR ACCESS IN FRONT OF FIXTURE (ONE FIXTURE ONLY REQUIRED).
  - ONE FULL UNOBSTRUCTED SIDE OF THE CLEAR FLOOR OR GROUND SPACE ADJOINS OR OVERLAPS AN ACCESSIBLE ROUTE OR ADJOINS ANOTHER WHEELCHAIR CLEAR FLOOR SPACE.
  - 44" MAXIMUM HEIGHT OF FLUSH VALVE ABOVE FLOOR.
  - 5 LB. MAXIMUM PRESSURE TO OPERATE FLUSH VALVE.
  - FLOOR SURFACES ARE SMOOTH, HARD AND NON-ABSORBENT EXTENDING UPWARD A MINIMUM OF 6" ONTO THE WALLS.
  - WALLS WITHIN 24" OF FRONT AND SIDES OF URINAL ARE SMOOTH, HARD AND NON-ABSORBENT TO 48" IN HEIGHT AND ARE NOT ADVERSELY AFFECTED BY MOISTURE.

- ACCESSORIES IN SANITARY FACILITIES**
- MINIMUM 30 X 48 CLEAR FLOOR OR GROUND SPACE IS PROVIDED TO ALLOW FORWARD OR PARALLEL APPROACH TO ACCESSORIES.
  - ONE FULL UNOBSTRUCTED SIDE OF THE CLEAR FLOOR OR GROUND SPACE ADJOINS OR OVERLAPS AN ACCESSIBLE ROUTE OR ADJOINS ANOTHER WHEELCHAIR CLEAR FLOOR SPACE.
  - MIRROR(S) IS MOUNTED WITH THE BOTTOM OF THE REFLECTIVE SURFACE EDGE NO HIGHER THAN 40" A.F.F. AND WITH THE TOP OF THE REFLECTIVE SURFACE EDGE NO LOWER THAN 74" A.F.F.
  - OPERABLE PARTS (INCLUDING COIN SLOTS) OF ALL FIXTURES OR ACCESSORIES ARE LOCATED A MAXIMUM OF 40" ABOVE FLOOR (I.E. SOAP DISPENSERS, TOWELS, TOILET SEAT COVERS, AUTO-DRYERS, SANITARY NAPKIN DISPENSERS, WASTE RECEPTACLES, ECT.).
  - CONTROLS AND OPERATING MECHANISMS ARE OPERABLE WITH ONE HAND AND DO NOT REQUIRE TIGHT GRASPING, PINCHING OR TWISTING OF THE WRIST.
  - THE FORCE TO ACTIVATE CONTROLS IS 5 LB. MAXIMUM.

- COAT HOOKS AND SHELVES**
- ACCESSIBLE COAT HOOKS PROVIDED WITHIN THE ROOM SHALL ACCOMMODATE A FORWARD REACH OR SIDE REACH COMPLYING W/ ANSI A117.1 SEC 308.
  - WHERE SHELVES ARE PROVIDED, A PROTON OF SHELVING SHALL BE MOUNTED AT 40" MIN. AND 48" MAX. A.F.F.

**EXCEL ENGINEERING and ARCHITECTURE, P.C.**  
100 GIMMELT DRIVE  
SPRING LAKE, WI 54935  
PHONE: (920) 926-9800  
WWW.EXCELENGINEER.COM

COLLABORATION

AspenDental

PROJECT INFORMATION  
PROJECT NUMBER 1712680

TENANT BUILD-OUT FOR:  
**ASPEN DENTAL**  
3070 WILLIAM ST. • CAPE GIRARDEAU, MO 63703

PROFESSIONAL SEAL

STATE OF MISSOURI  
DONATIE J. [Signature]  
NUMBER 2006000048  
ARCHITECT

SHEET DATES  
SHEET ISSUE JUNE 1, 2017

REVISIONS

NO.	DATE	DESCRIPTION

SHEET INFORMATION  
GENERAL ACCESSIBILITY & DETAILS  
SHEET NUMBER  
**A5.1**  
2016 © EXCEL ENGINEERING, INC.

Order Plans