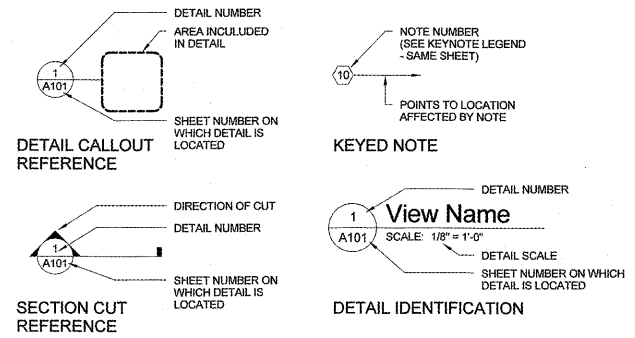


PROPOSED TENANT BUILD-OUT FOR:

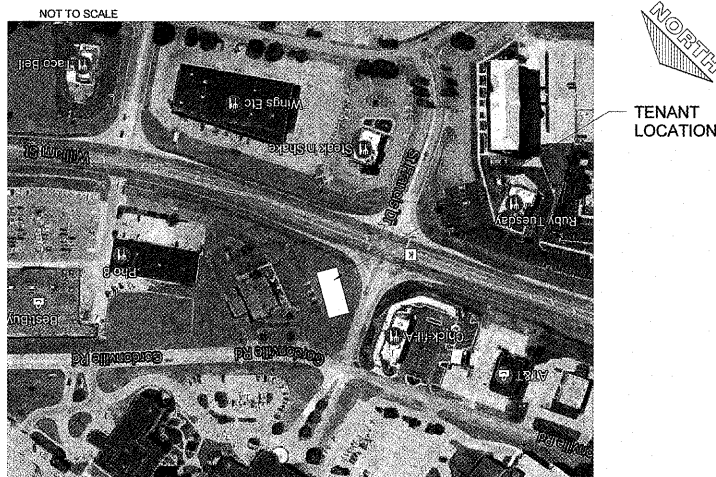
AspenDental



CAPE GIRARDEAU, MISSOURI SYMBOLS LEGEND



SITE PLAN



PROJECT INFORMATION

PROJECT NAME: ASPEN DENTAL
PROJECT ADDRESS: 3070 WILLIAM ST, CAPE GIRARDEAU, MO 63703
PROJECT USE: DENTAL OFFICE BUSINESS (B)

APPLICABLE CODES: 2015 INTERNATIONAL BUILDING CODE, 2015 NATIONAL STANDARD PLUMBING CODE, 2015 INTERNATIONAL MECHANICAL CODE, 2015 NATIONAL FIRE PROTECTION ASSOCIATION 101, 2009 INTERNATIONAL ENERGY CONSERVATION CODE, 2014 NATIONAL ELECTRICAL CODE, 2009 ANSI A117.1

USE & OCCUPANCY CLASSIFICATION: BUSINESS GROUP B

OCCUPANCY CLASSIFICATION: BUSINESS GROUP B
OCCUPANCY SEPERATION: SINGLE-TENANT BUILDING NO FIRE BARRIER SEPERATION REQUIRED

BUILDING SIZE: PROPOSED TENANT IMPROVEMENT 3,500 S.F.
BUILDING CONDITION: NEW CONSTRUCTION

TYPE OF CONSTRUCTION: TYPE VB
SEISMIC CATEGORY: CATEGORY D

INTERIOR FINISHES: INTERIOR WALL & CEILING FINISH CLASS - "B"

WALLS & CEILINGS: INTERIOR WALL & CEILING FINISH CLASS - "B"

FIRE PROTECTION SYSTEMS: AUTOMATIC SPRINKLER SYSTEM: NO; FIRE ALARM & DETECTION SYSTEM: NO

MEANS OF EGRESS: 200' EXIT DISTANCE, 72" EXIT WIDTH, COMMON PATH OF TRAVEL, 2 EXITS

ACCESSIBILITY: 1 ACCESSIBLE ENTRANCES, 1 ACCESSIBLE EXITS

PLUMBING FIXTURE COUNT:

OCCUPANCY TYPE	CAPACITY	WATER CLOSETS		LAVATORIES		DRINK FOUNTAINS		SERVICE SINK		
		FACTORS	# M. FIX.	# F. FIX.	FACTORS	# FIX.	FACTORS	# FIX.	FACTORS	# FIX.
B - GRP (BUSINESS)	35 PERSONS	1/25	.70	.70	1/40	.87	1/100	.35	1	1
PROVIDED FIXTURES			1 WC	1 WC		2		1		1

SHEET INDEX

SHEET	SHEET TITLE	DATE	ISSUED FOR CITY REVIEW	ISSUED FOR CITY SUBMITTAL & BUILDING	ADDENDUM #2	ADDENDUM #3	ADDENDUM #4	CONSTRUCTION BULLETIN #1	CONSTRUCTION BULLETIN #2	ISSUED FOR CONSTRUCTION
T1.0	TITLE SHEET, BUILDING DATA, LOCATION MAP, SITE PLAN	5/26/2017	X	X	X	X	X	X	X	YES
T2.0	LANDLORD WORK LETTER									YES
T2.1	PROJECT INFORMATION & RESPONSIBILITY MATRIX		X	X						YES
T2.2	SPECIFICATIONS		X	X						YES
ARCHITECTURAL SHEETS										
A1.1	FLOOR PLAN, DOOR SCHEDULE & DETAILS		X	X	X	X			X	YES
A3.0	DOOR SCHEDULE, ELEVATIONS, & DETAILS		X	X						YES
A5.0	ENLARGED ROSET ROOM PLANS, IN ELEVATIONS & DETAILS		X	X	X					YES
A5.1	GENERAL ACCESSIBILITY & DETAILS		X	X						YES
A5.2	DETAILS		X	X						YES
A6.1	ROOM FINISH PLAN & SCHEDULE		X	X	X				X	YES
A7.1	REFLECTED CEILING PLAN & DETAILS		X	X	X				X	YES
A7.2	DETAILS		X	X						YES
KE.1	GRESS ACCESSIBILITY PLAN		X	X	X				X	YES
DETAILED EQUIPMENT SUPPLIED SHEETS										
MD	MEDICAL EQUIPMENT DETAILS		X	X						YES
STRUCTURAL SHEETS										
	SOFFIT FRAMING PLAN & SATELLITE DETAIL		X	X	X					YES
ELECTRICAL SHEETS										
E0.1	LEGEND, ONE LINE DIAGRAM, & SCHEDULES		X	X			X			YES
E0.2	SPECIFICATIONS & DETAILS		X	X						YES
E1.1L	FLOOR PLAN - LIGHTING		X	X	X				X	YES
E1.1P	FLOOR PLAN - POWER		X	X	X				X	YES
E1.1LV	FLOOR PLAN - LOW VOLTAGE		X	X	X				X	YES
E2.0	ELEVATIONS & DETAILS		X	X						YES
HVAC SHEETS										
H0.1	SPECIFICATIONS, & SCHEDULES		X	X	X					YES
H1.1	FLOOR PLAN, LEGEND, & DETAILS		X	X	X				X	YES
H3.0	DETAILS		X	X						YES
UTILITY SHEET										
U1.1	UNDERGROUND UTILITY RISER PLAN		X	X	X			X	X	YES
PLUMBING SHEETS										
P0.1	LEGEND, SPECIFICATIONS, & GENERAL SCHEDULES		X	X						YES
P1.U	UNDERGROUND PLAN		X	X	X				X	YES
P1.1	FLOOR PLAN		X	X	X				X	YES
P1.2	FLOOR PLAN - AIR & VACUUM PIPING		X	X	X				X	YES
P2.0	ISOMETRICS & SCHEDULES		X	X	X				X	YES
P3.0	DETAILS		X	X						YES
P4.0	SCHEDULES		X	X						YES

SHEET INDEX LEGEND
 PRELIM PRELIMINARY SHEET
 x ISSUED SHEET

PROJECT CONTACTS

COUNTY OF CAPE GIRARDEAU
 PLANNING SERVICES DIVISION
 CITY HALL-2ND FLOOR
 401 INDEPENDENCE ST
 CAPE GIRARDEAU, MO 63703
 P: (573) 339-5327
 F: (573) 339-6303

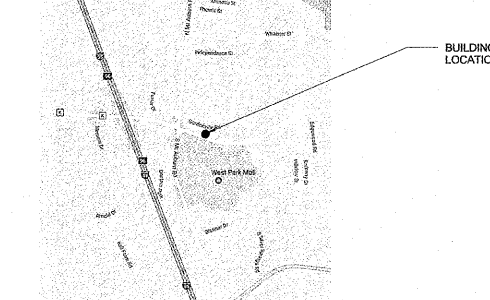
OWNER / CONST. MANAGER
 ASPEN DENTAL MANAGEMENT
 CONTACT: SHAWN CHRISTOPHER
 281 SANDERS CREEK PARKWAY
 EAST SYRACUSE, NEW YORK 13507
 P: (315) 454-6000 X1261
 F: (315) 454-6324

ARCHITECTURAL
 EXCEL ENGINEERING INC.
 CONTACT: JAY JOHNSON
 100 CAMELOT DRIVE
 FOND DU LAC, WI 54935
 P: (920) 926-9800
 F: (920) 926-9801

LANDLORD
 BEAR CREEK CAPITAL
 CONTACT: TIM KAUFMANN
 P: (314) 280-2540
 EMAIL: Tkaufmann@Lyonsgroupst.com

MEP
 EXCEL ENGINEERING INC.
 CONTACT: MICHAEL ZAGAR
 100 CAMELOT DRIVE
 FOND DU LAC, WI 54935
 P: (920) 926-9800
 F: (920) 926-9801

LOCATION MAP



REVIEWED FOR CODE COMPLIANCE
 JAN 05 2018
 RETAIN AT JOB SITE
 Approved By: [Signature]
 CITY OF CAPE GIRARDEAU Inspection Services

PROJECT INFORMATION
 PROJECT NUMBER: 1712680

TENANT BUILD-OUT FOR:
ASPEN DENTAL
 3070 WILLIAM ST. • CAPE GIRARDEAU, MO 63703

PROFESSIONAL SEAL

SHEET DATES

SHEET ISSUE	JUNE 1, 2017
REVISIONS	
AD1	JUNE 6, 2017
AD2	JUNE 22, 2017
AD3	JULY 12, 2017
AD4	AUG. 16, 2017
CB1	DEC. 15, 2017
CB2	DEC. 19, 2017

SHEET INFORMATION
 TITLE SHEET
 SHEET NUMBER
T1.0

Order Plans

CONTRACTOR COPY