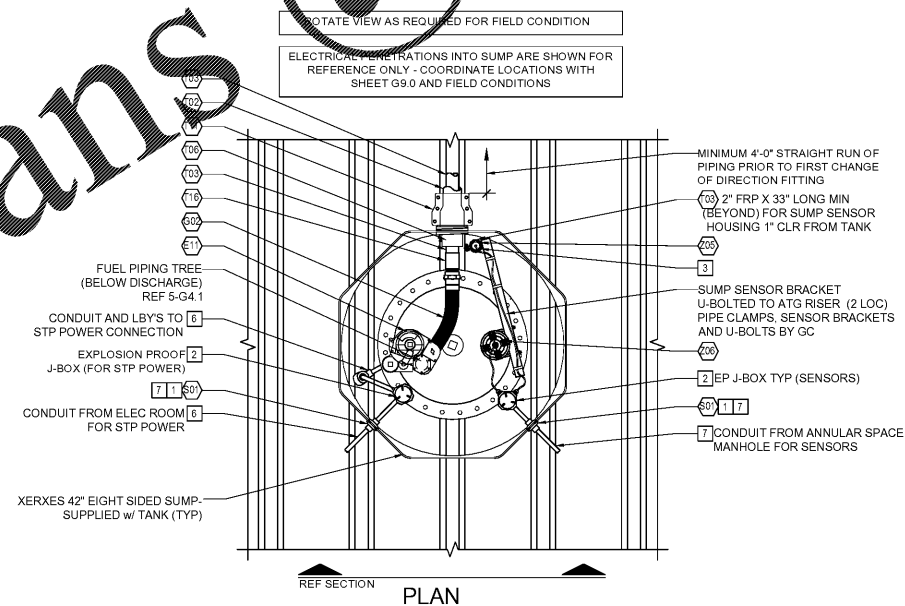
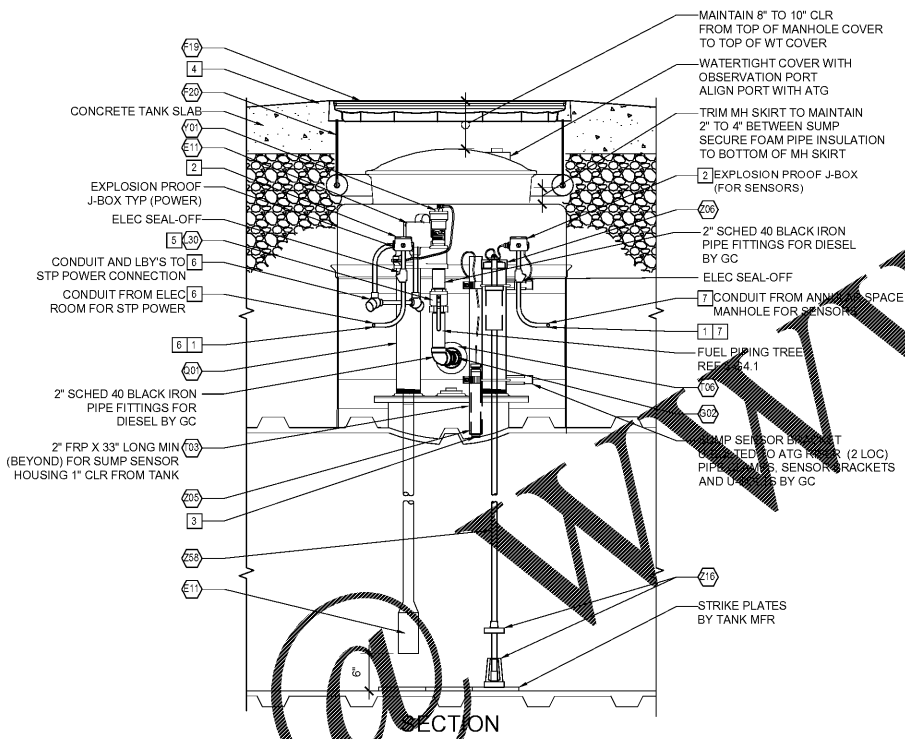
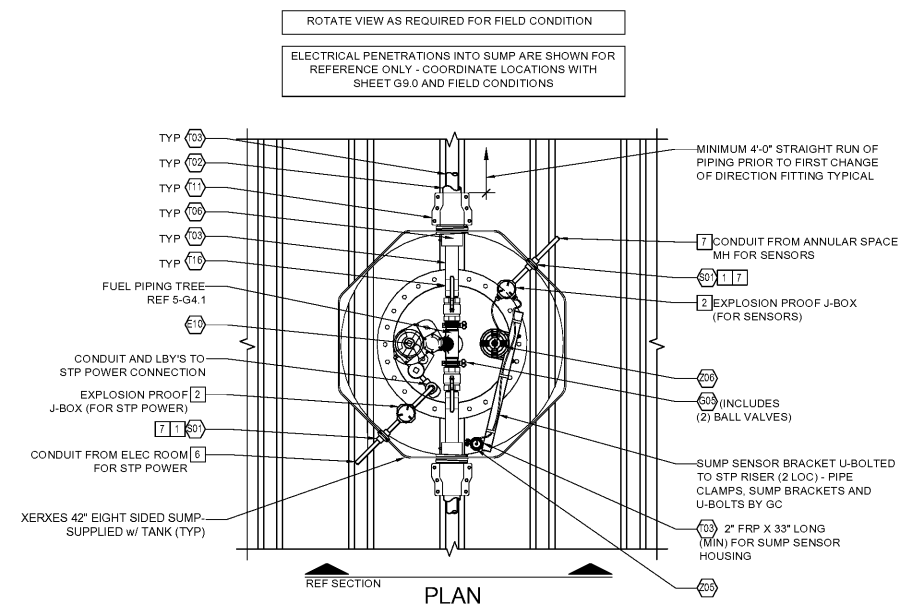
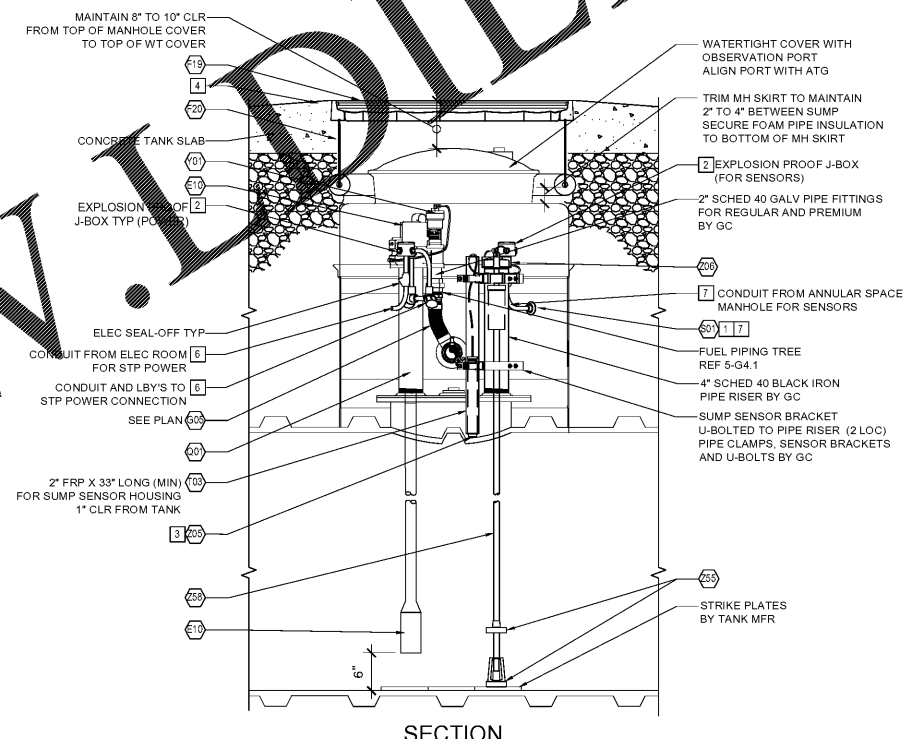


Order Plans



2 DIESEL STP SUMP DETAILS
3/4"=1'-0"



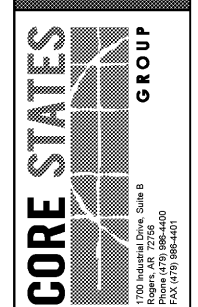
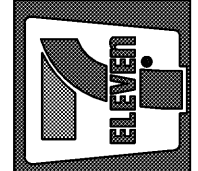
1 REGULAR AND PREMIUM STP SUMP DETAILS
3/4"=1'-0"

KEY NOTES

- 1 ELECTRICAL CONDUITS TO ENTER SUMP 2" MIN ABOVE HIGHEST PRODUCT PENETRATION.
- 2 LOCATE ELECTRICAL JUNCTION BOX IN UPWARD POSITION AT HIGHEST LOCATION IN SUMP RISER FOR EASY ACCESS FROM ABOVE.
- 3 SUMP SENSOR TO REST AT LOWEST POINT OF SUMP ENCLOSURE ON PRODUCT BE INSIDE OF SUMP. TANK CONTRACTOR TO SUPPLY ALL BRACKETS AND CLAMPS. POINT MOUNTING OF THE 2" FRP SLEEVE.
- 4 SET MANHOLE COVER 1" ABOVE FINISH GRADE. PIPE CONCRETE AWAY FROM MANHOLE COVERS AT GRADE.
- 5 POSITION BALL VALVE FOR UNOBSTRUCTED USE OF SHUT-OFF HANDLE.
- 6 STP POWER CIRCUITS MUST BE RUN IN SEPARATE RACEWAY. ENTIRE WIRING RUN MUST BE IN RIGID PVC COATED GALVANIZED STEEL CONDUIT. USE ONLY ROB ROY CONDUIT TYPES "PERMA-COAT", "PLASTI-BOND" OR "KORKAP". NO PVC OR RNC CONDUIT ALLOWED.
- 7 USE ONLY ROB ROY CONDUIT TYPES "PERMA-COAT", "PLASTI-BOND" OR "KORKAP". ELECTRICAL CONDUITS AT FIBERGLASS TANK SUMPS OR WHERE BRAVO F-11-RR OR F-10-RR ENTRY FITTINGS ARE CALLED OUT.

Rev. #	Date	Description

Proto 08-21-17
7-ELEVEN, INC.
3200 HACKBERRY ROAD, IRVING TEXAS 75063
7-ELEVEN #38227
S.W. CARROLL ST & DYER BLVD
KISSIMMEE, FL 34741
TANK SUMP DETAILS
DUAL OUTPUT



Job#: SEI-20880.521
Scale: AS NOTED
Date: 12/19/17
Drawn By: RMK
Checked By: KMS

Documents prepared by Core States Group are to be used only for the specific project and intended. Any extension of use to other projects, by owner or any other party, without the written consent of Core States Group is done at the user's own risk. If used in a manner not intended, user will hold Core States Group harmless from all claims and losses.

SHEET:
G4.0
FUELING - USA