

12/19/2017 1:36:33 PM

P:\01 Projects\2017 Projects\17645 7 Eleven Kissimmee at Carrill 7 Dyer\Drawings\Working Drawings\17645_7 Eleven Kissimmee R16.rvt



SELECT STRUCTURAL
 12573 New Brittany Blvd
 Fort Myers, Florida 33907
 Phone: (239) 210-5090
 info@selectstructural.com
 Certification Auth. 28357



106 N 37TH STREET, SUITE C
 ROGERS, ARKANSAS 72756
 WWW.BATESINSTRUMENTS.COM
 TEL: 479.633.1111

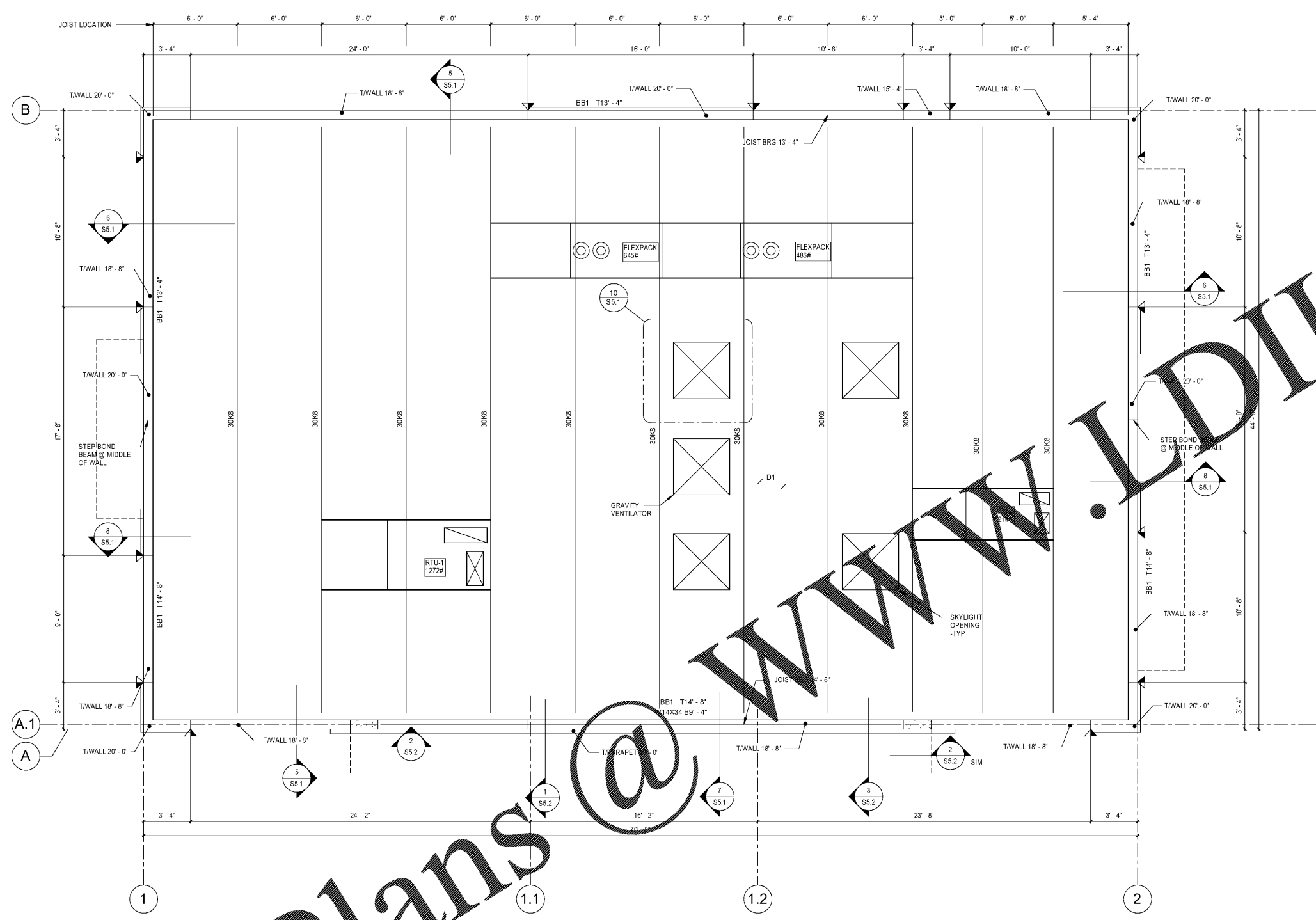
CONSTRUCTION MANAGER
 CREGHTON CONSTRUCTION & MANAGEMENT, LLC
 900 SW PINE ISLAND ROAD, SUITE 202
 CAPE CORAL, FL 33991

TENANT
 7-ELEVEN INC.
 3200 HACKBERRY ROAD,
 IRVING, TX 75063

STRUCTURAL CONSULTANT
 SELECT STRUCTURAL
 12573 NEW BRITANNY BLVD
 FORT MYERS, FL 33907

7-ELEVEN STORE
 SW/O CARROL ST. & DYER BLVD.
 KISSIMMEE, FL 34741

CREGHTON CONSTRUCTION & MANAGEMENT, LLC
 900 SW PINE ISLAND ROAD, SUITE 202
 CAPE CORAL, FL 33991



ROOF FRAMING PLAN
 1/4" = 1'-0"

ROOF FRAMING PLAN NOTES:

- INDICATES IN DIRECTION OF 1 1/2" x 2" TYPE "B" ROOF DECK W/ #12 TEK SCREWS IN A 36" PATTERN W/ (3) #4 TEK SCREWS SIDELAP TENERS PER SPAN
- SEE COMMENTS FOR CLADDING AND PRESSURE FOR NET UPLIFT FOR JOIST DESIGN. JOIST MANUFACTURER SHALL PROVIDE ADEQUATE BOTTOM CHORD BRACING FOR JOISTS TO RESIST UPLIFT FORCES. USE SSPS TO CALCULATE NET ROOF UPLIFT.
- T/WALL INDICATES TOP OF BEAM ELEVATION.
 BK' INDICATES TOP OF BEAM ELEVATION.
 JOIST MANUFACTURER TO DESIGN JOISTS FOR RTU LOAD INDICATED ON ROOF FRAMING PLAN. RTU LOADS ARE IN ADDITION TO REGULAR LIVE AND DEAD LOADS.
- INDICATES STEP IN TOP OF WALL ELEVATION.

BEAM SCHEDULE							
MARK	WIDTH	HEIGHT	REINFORCING			STIRRUPS	COMMENTS
			TOP	MID	BOT		
BB1	8"	1'-4"	(1) #5	-	(1) #5	BOND BEAM	

THIS ITEM HAS BEEN ELECTRONICALLY SIGNED AND SEALED USING A DIGITAL SIGNATURE.
 PRINTED COPIES OF THIS DOCUMENT ARE NOT CONSIDERED SIGNED AND SEALED AND THE SIGNATURE MUST BE VERIFIED ON ANY ELECTRONIC COPIES.

Engineer Name - SHAWN ANDERSON
 Engineer Number - 53515

REVISIONS	
NO.	DESCRIPTION

PROJECT NUMBER: 17111
 RELEASE DATE: 12/19/2017

ROOF FRAMING PLAN

S3.0