

12/19/2017 1:36:33 PM

P:\01 Projects\2017 Projects\17645 7 Eleven Kissimmee at Carrill 7 Dyer\Drawings\Working Drawings\17645\_7 Eleven Kissimmee R16.rvt



**SELECT STRUCTURAL**  
12573 New Brittany Blvd  
Fort Myers, Florida 33907  
Phone: (239) 210-5090  
info@selectstructural.com  
Certification Auth. 28357

**bates**  
106 N 37TH STREET, SUITE C  
ROGERS, ARKANSAS 72756  
WWW.BATESSTRUCTURALS.COM  
TEL: 479.633.1111

Copyright © 2017 by Bates & Associates, Inc. All rights reserved. This drawing is the property of Bates & Associates, Inc. and shall remain the property of Bates & Associates, Inc. No part of this drawing may be reproduced, stored in a retrieval system, or transmitted in any form or by any means, electronic, mechanical, photocopying, recording, or by any information storage and retrieval system, without the prior written permission of Bates & Associates, Inc. The user of this drawing shall be responsible for construction means, methods, materials, sequences or procedures, or for safety precautions and other matters in connection with the project.

STORE #:  
30227

CONSTRUCTION MANAGER  
CREIGHTON CONSTRUCTION & MANAGEMENT, LLC  
900 SW PINE ISLAND ROAD, SUITE 202  
CAPE CORAL, FL 33991

TENANT  
7-ELEVEN INC.  
3200 HACKBERRY ROAD,  
IRVING, TX 75063

STRUCTURAL CONSULTANT  
SELECT STRUCTURAL  
12573 NEW BRITANNY BLVD  
FORT MYERS, FL 33907

**7-ELEVEN STORE**  
SW/O CARROL ST. & DYER BLVD.  
KISSIMMEE, FL 34741

**CREIGHTON CONSTRUCTION & MANAGEMENT, LLC**  
900 SW PINE ISLAND ROAD, SUITE 202  
CAPE CORAL, FL 33991

Engineer Name - SHAWN ANDERSON  
Engineer Number - 53515

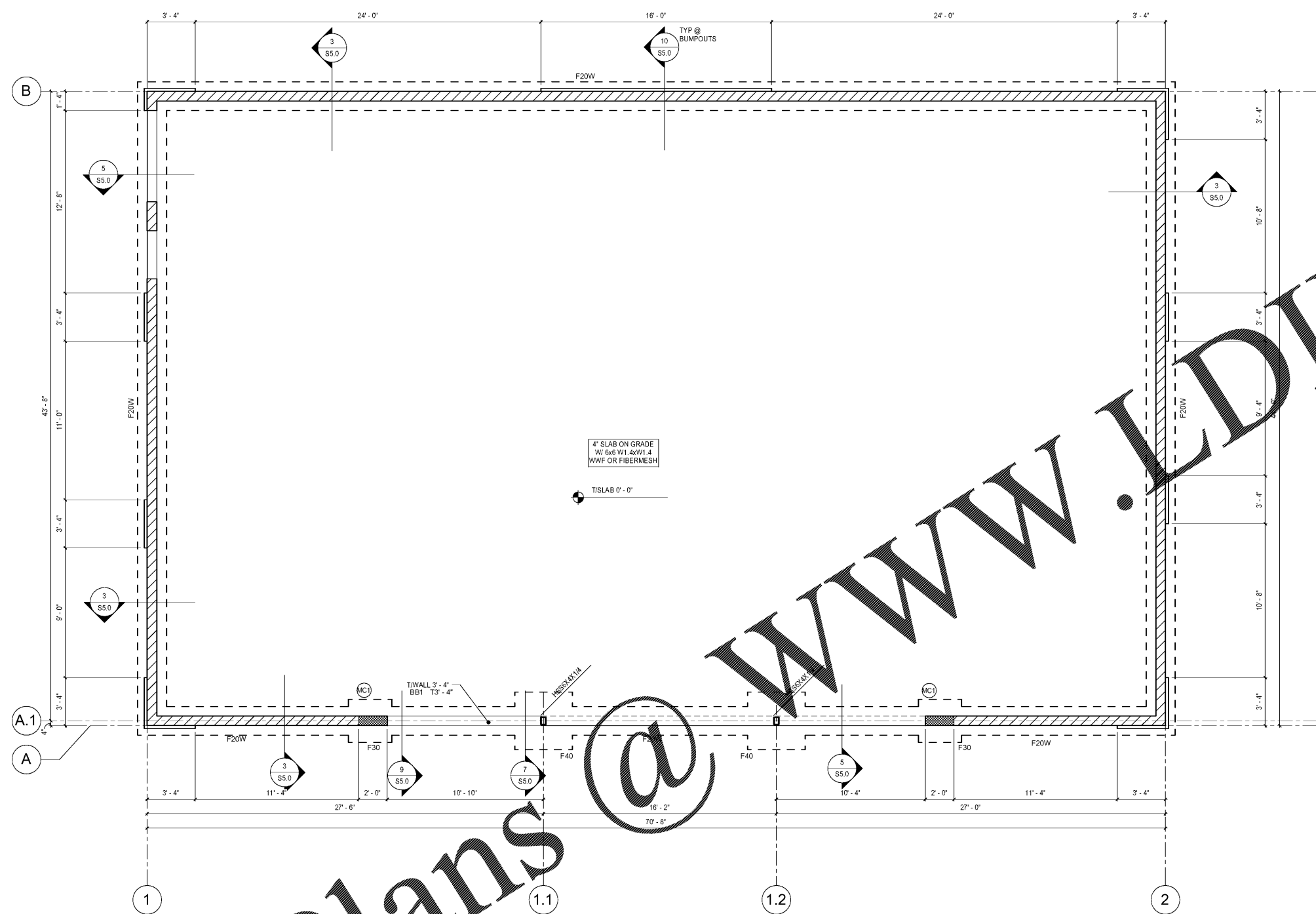
THE SEAL AND SIGNATURE APPLY ONLY TO THE DOCUMENT TO WHICH THEY ARE AFFIXED AND WE HEREBY DISCLAIM ANY RESPONSIBILITY FOR ALL OTHER PLANS, SPECIFICATIONS, ESTIMATES, REPORTS OR OTHER DOCUMENTS OR INSTRUMENTS RELATING TO OR INTENDED TO BE USED FOR ANY PARTS OR PARTS OF THE PROJECT.

REVISIONS	
NO.	DESCRIPTION

PROJECT NUMBER: 17111  
RELEASE DATE: 12/19/2017

FOUNDATION PLAN

**S2.0**



**FOUNDATION PLAN**  
1/4" = 1'-0"

**FOUNDATION PLAN NOTES:**

- SEE ARCHITECTURAL DRAWINGS FOR NOTES, DROPS, AND DRAINAGE IN FLOOR SLABS.
- DO NOT SCALE DRAWINGS. VERIFY AND COORDINATE ALL DIMENSIONS AND ELEVATIONS WITH ARCHITECTURAL DRAWINGS BEFORE COMMENCING CONSTRUCTION. NOTIFY STRUCTURAL ENGINEER AND ARCHITECT OF ANY DISCREPANCIES BEFORE PROCEEDING WITH WORK.
- FX INDICATES FOOTING TYPE, SEE SCHEDULE THIS SHEET.
- (X'X') INDICATES TYPE OF FOOTING ELEVATION (-1'-4" UNO).
- INDICATES #6 REINFORCING WALL W/ #5 AT 40" OC MAX AND AT CORNERS, INTERSECTIONS AND BOTH SIDES OF OPENINGS.
- MC1 INDICATES 12" x 24" MASONRY COLUMN W/ (3) #6 VERTICAL BARS.
- ALL FOOTING SCHEDULES APPLY TO THIS SHEET. SEE FOOTING TAGS ON PLAN.

HSS COLUMN SCHEDULE		
TYPE	BASE PLATE SIZE	ANCHOR RODS
HSS6X4X1/4	3/4"x12"x1'-0"	(4) 3/4" DIA x 9" EMBED

WALL FOUNDATION SCHEDULE			
MARK	WIDTH	DEPTH	REINFORCING
F20W	2'-0"	1'-0"	(3) #5 CONT
F40W	4'-0"	1'-0"	(5) #5 CONT & #5 @ 12" OC TRANSVERSE

COLUMN FOUNDATION SCHEDULE				
MARK	WIDTH	LENGTH	DEPTH	REINFORCING
F30	3'-0"	3'-0"	1'-0"	(4) #5 EA WAY BOTTOM
F40	4'-0"	4'-0"	1'-0"	(5) #5 EA WAY BOTTOM

THIS ITEM HAS BEEN ELECTRONICALLY SIGNED AND SEALED USING A DIGITAL SIGNATURE.  
PRINTED COPIES OF THIS DOCUMENT ARE NOT CONSIDERED SIGNED AND SEALED AND THE SIGNATURE MUST BE VERIFIED ON ANY ELECTRONIC COPIES.