

REV #	DATE	DESCRIPTION

**REFORMATION BREWERY**  
 105 ELM STREET  
 WOODSTOCK, GEORGIA 30188  
**REFORMATION BREWERY**



**PLACE MAKER DESIGN**  
 1000 CIRCLE 75 PARKWAY  
 SUITE 400  
 ATLANTA, GEORGIA 30339  
 404.549.4499

ISSUE DATE	12/29/17
DRAWN BY	AT
CHECKED BY	BA
PWD PROJ #	17072

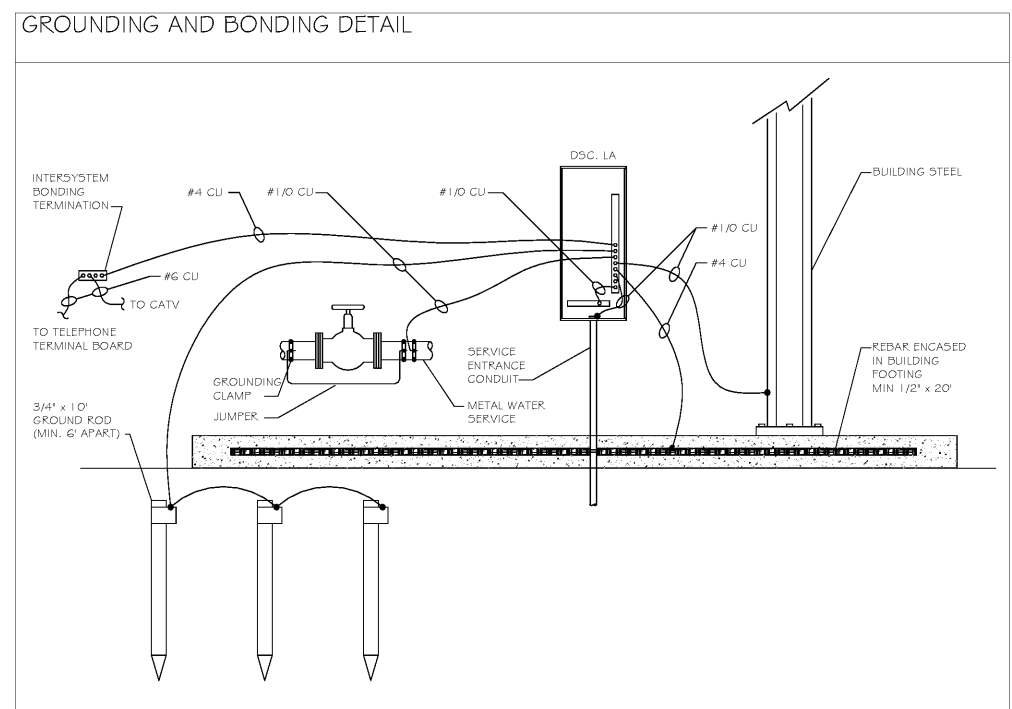
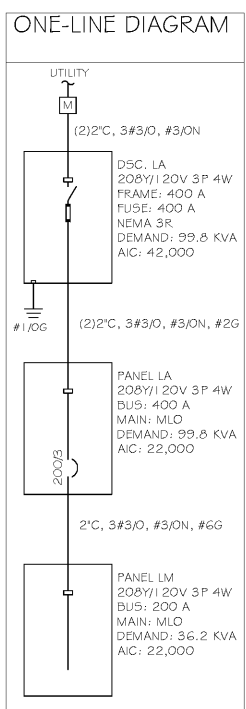
SCHEDULES  
**E0.2**

GENERAL SCHEDULE						
CALLOUT	SYMBOL	VOLTS	KVA	CIRCUIT	WIRE CALLOUT	DISCONNECT DESCRIPTION
BREWHOUSE CONTROL PANEL	☐	208V 3P 4W	41.6	LA-7,9,11	1-1/2" C, 2#10, #10N, #6G	200A 3P NEMA 1
COLD ROOM - COND.	⊞	208V 120V 2P 3W	1.75	LA-21,23	1/2" C, 2#12, #12N, #12G	30A 2P NEMA 3R
COLD ROOM - EVAP.	⊞	208V 120V 2P 3W	0.22	LA-25,27	1/2" C, 2#12, #12N, #12G	30A 2P NEMA 1
EF-1	⊞	120V 1P 2W	0.24	LA-1	1/2" C, 1#10, #10N, #10G	SWITCHED WITH LIGHTS
EF-2	⊞	120V 1P 2W	0.15	LA-1	1/2" C, 1#10, #10N, #10G	SWITCHED WITH LIGHTS
EF-A	⊞	120V 1P 2W	0.1	LA-1	1/2" C, 1#10, #10N, #10G	SWITCHED WITH LIGHTS
EF-A	⊞	120V 1P 2W	0.1	LA-1	1/2" C, 1#10, #10N, #10G	SWITCHED WITH LIGHTS
EF-A	⊞	120V 1P 2W	0.1	LA-1	1/2" C, 1#10, #10N, #10G	SWITCHED WITH LIGHTS
WALK-IN - COND.	⊞	208V 120V 2P 3W	1.75	LA-13,15	1/2" C, 2#12, #12N, #12G	30A 2P NEMA 3R
WALK-IN - EVAP.	⊞	208V 120V 2P 3W	0.22	LA-17,19	1/2" C, 2#12, #12N, #12G	30A 2P NEMA 1

MECHANICAL EQUIPMENT SCHEDULE						
CALLOUT	SYMBOL	VOLTS	KVA	CIRCUIT	WIRE CALLOUT	DISCONNECT DESCRIPTION
MFCU-1	⊞	208V 120V 2P 3W	0.21	LM-9,11	1/2" C, 2#12, #12N, #12G	30A 2P NEMA 1
MFCU-2	⊞	208V 120V 2P 3W	0.21	LM-21,23	1/2" C, 2#12, #12N, #12G	30A 2P NEMA 1
MFCU-A	⊞	208V 120V 2P 3W	0.21	LM-1,3	1/2" C, 2#12, #12N, #12G	30A 2P NEMA 1
MFCU-B	⊞	208V 120V 2P 3W	0.21	LM-5,7	1/2" C, 2#12, #12N, #12G	30A 2P NEMA 1
MFCU-D	⊞	208V 120V 2P 3W	0.21	LM-33,35	1/2" C, 2#12, #12N, #12G	30A 2P NEMA 1
MFCU-B2	⊞	208V 120V 2P 3W	0.21	LM-37,39	1/2" C, 2#12, #12N, #12G	30A 2P NEMA 1
MFCU-1	⊞	208V 120V 2P 3W	0.21	LM-29,31	1/2" C, 2#12, #12N, #12G	30A 2P NEMA 1
MFCU-2	⊞	208V 120V 2P 3W	0.21	LM-25,27	1/2" C, 2#12, #12N, #12G	30A 2P NEMA 1
MFCU-D1	⊞	208V 120V 2P 3W	0.21	LM-13,15	1/2" C, 2#12, #12N, #12G	30A 2P NEMA 1
MFCU-D2	⊞	208V 120V 2P 3W	0.21	LM-17,19	1/2" C, 2#12, #12N, #12G	30A 2P NEMA 1
MHP-1	⊞	208V 120V 2P 3W	4.16	LM-18,20	1/2" C, 2#10, #10N, #10G	30A 2P NEMA 3R
MHP-2	⊞	208V 120V 2P 3W	1.87	LM-22,24	1/2" C, 2#10, #10N, #10G	30A 2P NEMA 3R
MHP-A	⊞	208V 120V 2P 3W	7.28	LM-2,4	3/4" C, 2#6, #6N, #10G	60A 2P NEMA 3R
MHP-B	⊞	208V 120V 2P 3W	7.28	LM-6,8	3/4" C, 2#6, #6N, #10G	60A 2P NEMA 3R
MHP-C	⊞	208V 120V 2P 3W	7.28	LM-10,12	3/4" C, 2#6, #6N, #10G	60A 2P NEMA 3R
MHP-D	⊞	208V 120V 2P 3W	6.24	LM-14,16	3/4" C, 2#6, #6N, #10G	60A 2P NEMA 3R

Panel	ROOM	VOLTS	208Y/120V 3P 4W	AIC	22,000
LM	MOUNTING FLUSH	BUS AMPS	200	MAIN BKR	MLO
	FED FROM	LA	NEUTRAL	100%	LUGS STANDARD
	NOTE				
CKT #	LOAD KVA	CIRCUIT DESCRIPTION	CKT #	LOAD KVA	CIRCUIT DESCRIPTION
1	0.2	MFCU-A1	2	50.2	MHP-A
3	0.2	MFCU-A2	4	7.3	MHP-B
5	0.2	MFCU-1	6	7.3	MHP-C
7	0.2	MFCU-D1	8	41.6	MHP-D
9	0.2	MFCU-D2	10	6.2	MHP-1
11	0.2	MFCU-D1	12	4.2	MHP-1
13	0.2	MFCU-D2	14	30.2	MHP-2
15	0.2	MFCU-D1	16	0.0	SPACE
17	0.2	MFCU-D2	18	0.0	SPACE
19	0.2	MFCU-D1	20	0.0	SPACE
21	0.2	MFCU-D2	22	0.0	SPACE
23	0.2	MFCU-D1	24	0.0	SPACE
25	0.2	MFCU-D2	26	0.0	SPACE
27	0.2	MFCU-D1	28	0.0	SPACE
29	0.2	MFCU-D2	30	0.0	SPACE
31	0.2	MFCU-D1	32	0.0	SPACE
33	0.2	MFCU-D2	34	0.0	SPACE
35	0.2	MFCU-D1	36	0.0	SPACE
37	0.2	MFCU-D2	38	0.0	SPACE
39	0.2	MFCU-D1	40	0.0	SPACE
41	0.2	MFCU-D2	42	0.0	SPACE
CONN. KVA		0.0	CONN. KVA		0.0
CALC. KVA		0.0 (125%)	CALC. KVA		0.0 (125%)
LARGEST MOTOR		0.0 (125%)	HEATING		36.2 (100%)
OTHER MOTORS		0.0 (100%)	NONCONTINUOUS		0.0 (100%)
RECEPTACLES		0.0 (50%>10)	KITCHEN EQUIP		0.0 (N/A)
			NONCONDIVERSE		0.0 (N/A)
			TOTAL KVA		36.2
			BALANCED THREE PHASE AMPS		100.5
			PHASE BALANCE PERCENT: PHASE A		109%
			PHASE B		100%
			PHASE C		90.4%

Panel	ROOM	VOLTS	208Y/120V 3P 4W	AIC	22,000
LA	MOUNTING FLUSH	BUS AMPS	400	MAIN BKR	MLO
	FED FROM	DSC. LA	NEUTRAL	100%	LUGS STANDARD
	NOTE				
CKT #	LOAD KVA	CIRCUIT DESCRIPTION	CKT #	LOAD KVA	CIRCUIT DESCRIPTION
1	1.7	EF-1, EF-2, EF-A, LIGHTING	2	1.0	LIGHTING
3	1.4	LIGHTING	4	1.0	LIGHTING
5	1.1	LIGHTING	6	1.2	FREEZER
7	125.8	BREWHOUSE CONTROL PANEL	8	1.2	ICE MACHINE
9	41.6	BREWHOUSE CONTROL PANEL	10	1.4	DISHWASHER
11	1.8	WALK-IN - COND.	12	1.1	RECEPTACLE
13	1.8	WALK-IN - COND.	14	0.9	RECEPTACLE
15	1.8	WALK-IN - COND.	16	1.1	RECEPTACLE
17	0.2	WALK-IN - EVAP.	18	1.4	DISHWASHER
19	0.2	WALK-IN - EVAP.	20	1.4	DISHWASHER
21	1.8	COLD ROOM - COND.	22	1.4	DISHWASHER
23	1.8	COLD ROOM - COND.	24	0.9	RECEPTACLE
25	0.2	COLD ROOM - EVAP.	26	1.1	RECEPTACLE
27	0.2	COLD ROOM - EVAP.	28	0.9	RECEPTACLE
29	0.2	RECEPTACLE	30	2.0	RECEPTACLE
31	0.5	RECEPTACLE	32	0.9	FAN 2
33	15.8	FAN 1	34	1.1	RECEPTACLE
35	1.6	FAN 1	36	36.2	PANEL LM
37	1.1	RECEPTACLE	38	1.1	RECEPTACLE
39	0.5	RECEPTACLE	40	1.1	RECEPTACLE
41	0.5	RECEPTACLE	42	1.1	RECEPTACLE
CONN. KVA		5.5	CONN. KVA		0.0
CALC. KVA		6.9 (125%)	CALC. KVA		0.0 (125%)
LARGEST MOTOR		0.2 (125%)	HEATING		36.2 (100%)
OTHER MOTORS		0.5 (100%)	NONCONTINUOUS		0.0 (100%)
RECEPTACLES		14.8 (50%>10)	KITCHEN EQUIP		51.5 (MAX 2)
			NONCONDIVERSE		0.0 (N/A)
			TOTAL KVA		108.8
			BALANCED THREE PHASE AMPS		277.2
			PHASE BALANCE PERCENT: PHASE A		103%
			PHASE B		103%
			PHASE C		94.5%



Order Plans @ WWW.LDLine.com