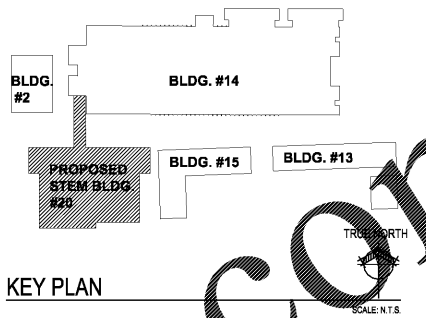
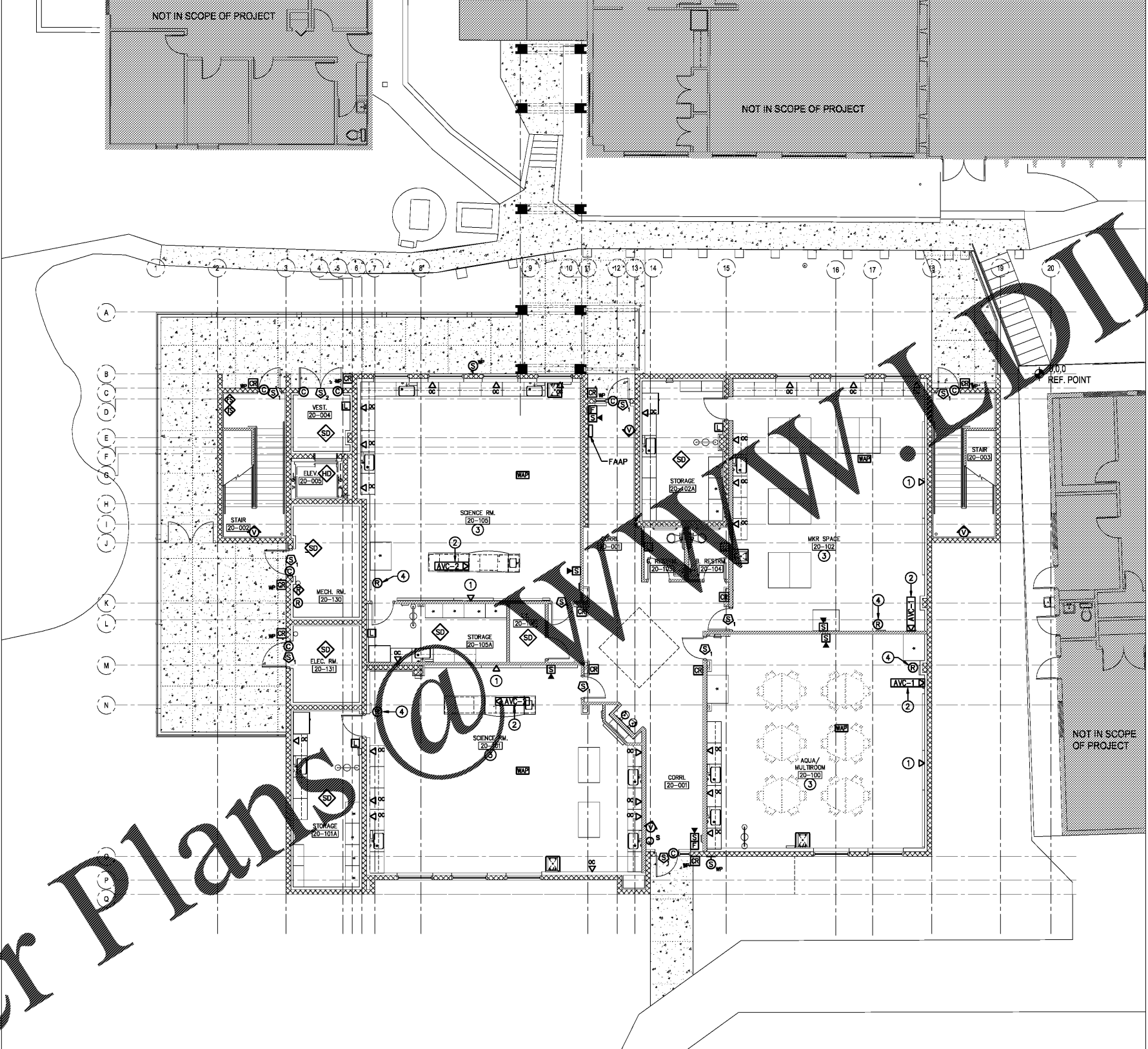


This information is intended for the use of the architect and is not to be used for construction. It is the responsibility of the contractor to verify the accuracy of the information and to coordinate with the appropriate authorities. The user hereby agrees to hold the architect harmless for any and all claims, damages, losses, and expenses, including reasonable attorneys' fees, that may be incurred by the user in reliance on the information contained herein. The user hereby agrees to hold the architect harmless for any and all claims, damages, losses, and expenses, including reasonable attorneys' fees, that may be incurred by the user in reliance on the information contained herein.



**1 FIRST FLOOR SYSTEMS PLAN**  
 E2.3 SCALE: 1/8" = 1'-0"

- PLAN NOTES:**
- COORDINATE LOCATION OF DATA OUTLET WITH SHORT THROW PROJECTOR ON THE WALL. VERIFY HEIGHT AND LOCATION WITH ARCHITECT PRIOR TO ROUGH-IN.
  - SEE DETAIL FOR SYSTEMS OUTLETS CONTAINED WITHIN TEACHER STATION, AND SIMILAR SPACES. CONTRACTOR SHALL VERIFY THE EXACT LOCATION OF ALL CASEWORK PRIOR TO ROUGH-IN OF ALL OUTLETS.
  - COORDINATE DATA OUTLET QUANTITY AND LOCATIONS IN THIS AREA WITH ARCHITECT AND OWNER PRIOR TO ROUGH IN.
  - FIRE ALARM SHUTDOWN RELAY AT ISMET UTILITY CONTROLLER (CONTROL PANEL). SEE POWER PLAN FOR CONTROL PANEL LOCATION.

**HARVARD • JOLLY ARCHITECTURE**  
 2047 VISTA PARKWAY, SUITE 100 | WEST PALM BEACH, FL 33411 | www.harvardjolly.com | AAC000119

**J L L R D**  
 JOHNSON, LEVINSON, RAGAN, DAVILA, INC.  
 1450 Centrepark Boulevard, Suite 350  
 West Palm Beach, Florida 33401  
 (561) 689-2303 (561) 689-2302 Fax  
 www.jlr.com  
 Certification Number 6059  
 Michael P. Landen, P.E. 30594  
 Charles C. Chalkman, P.E. 21936

**STEM BUILDING  
 THE BENJAMIN SCHOOL - LOWER MIDDLE SCHOOL**  
 11000 Ellison Wilson Road, North Palm Beach, FL 33408  
 CONSTRUCTION DOCUMENTS

Corr. No:	16117.00	
Job No:	117030	
Date:	10-23-17	
Drawn:		
Revisions		
No.	Date	Note

TO THE BEST OF MY KNOWLEDGE, THE PLANS AND SPECIFICATIONS COMPLY WITH THE MINIMUM BUILDING CODES.

© 2017 HARVARD JOLLY, INC.

JLRD Project #117030

**E2.3**