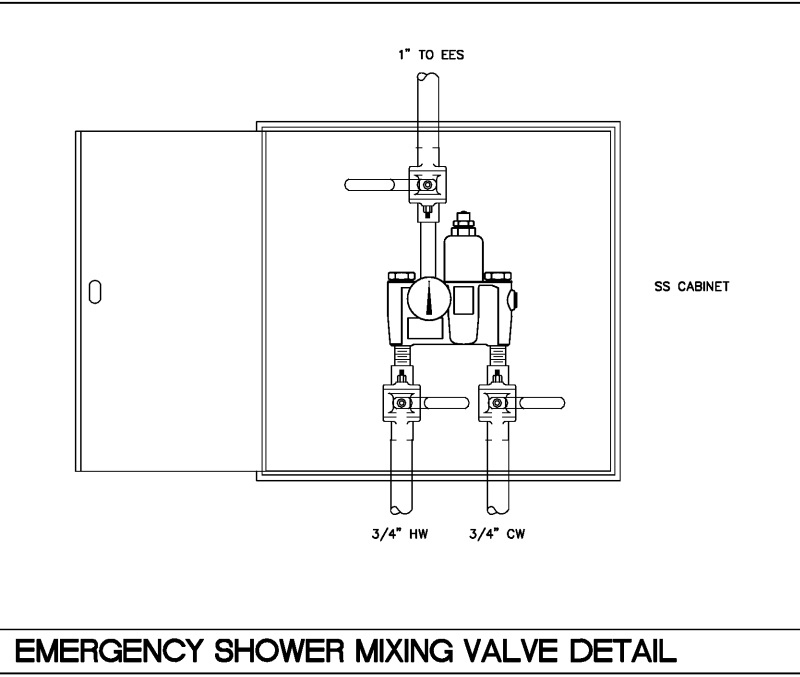
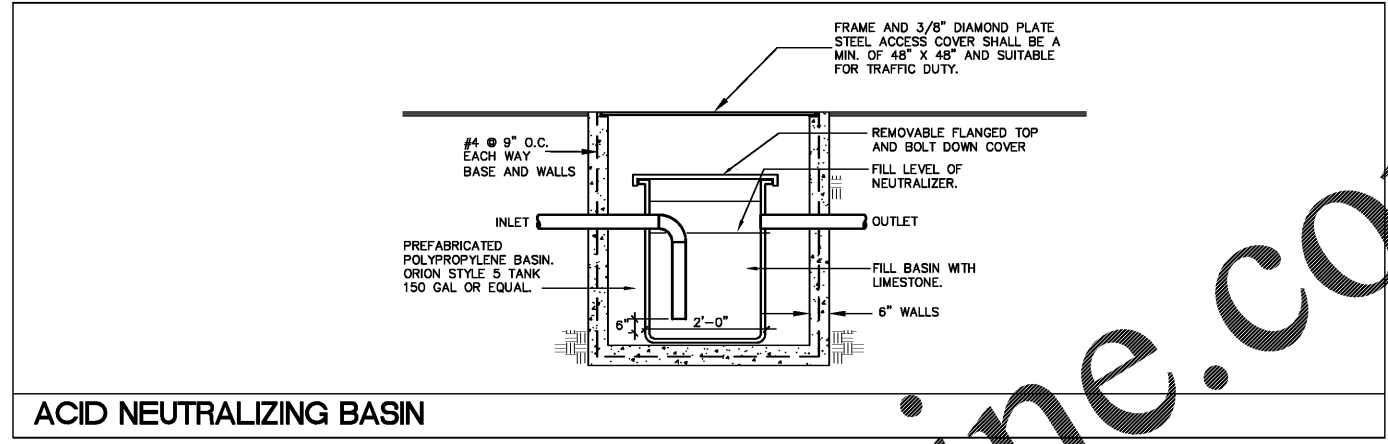


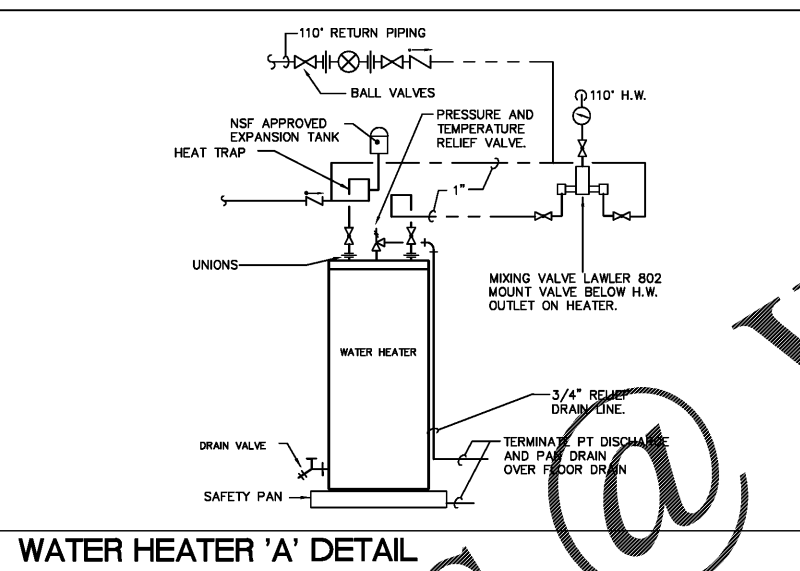
This information is intended to be used as a guide only. It is not intended to be used as a substitute for professional engineering or architectural services. The user hereby represents and warrants that it will be used in accordance with the intended purpose of the information.



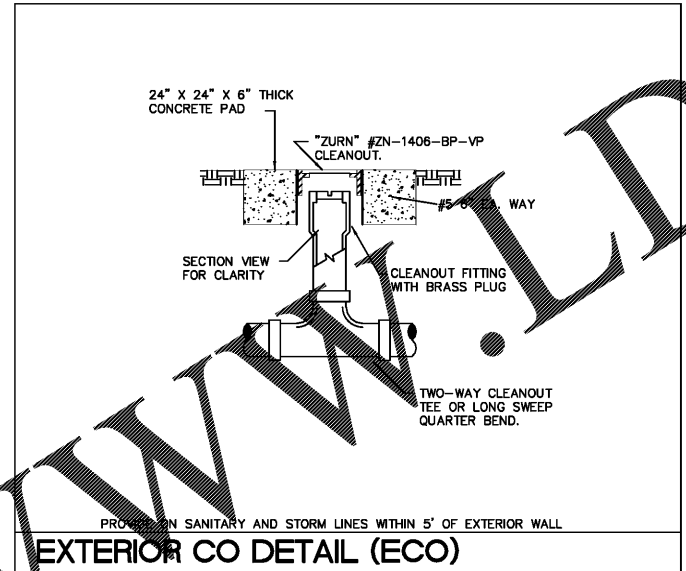
EMERGENCY SHOWER MIXING VALVE DETAIL



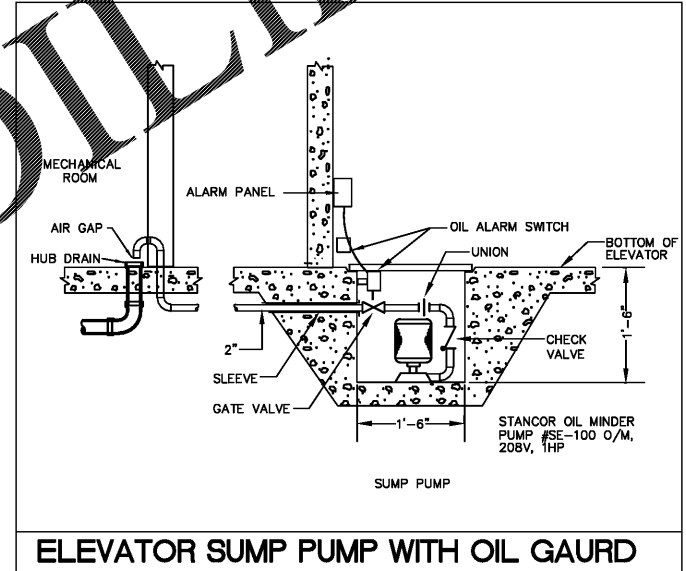
ACID NEUTRALIZING BASIN



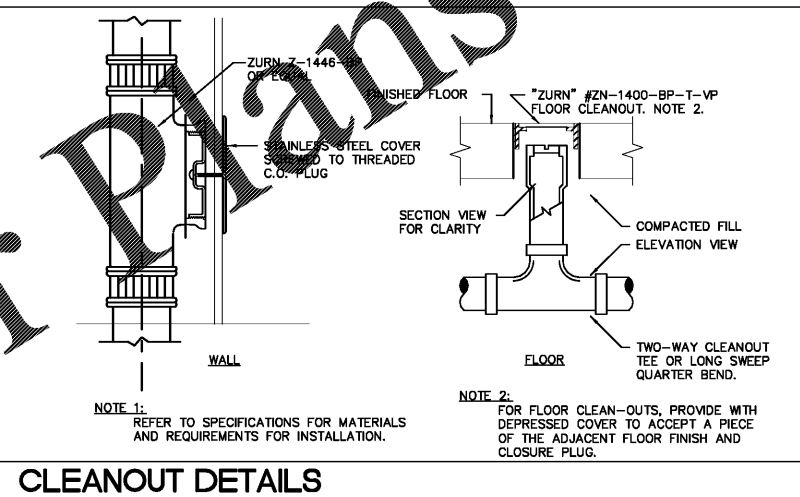
WATER HEATER 'A' DETAIL



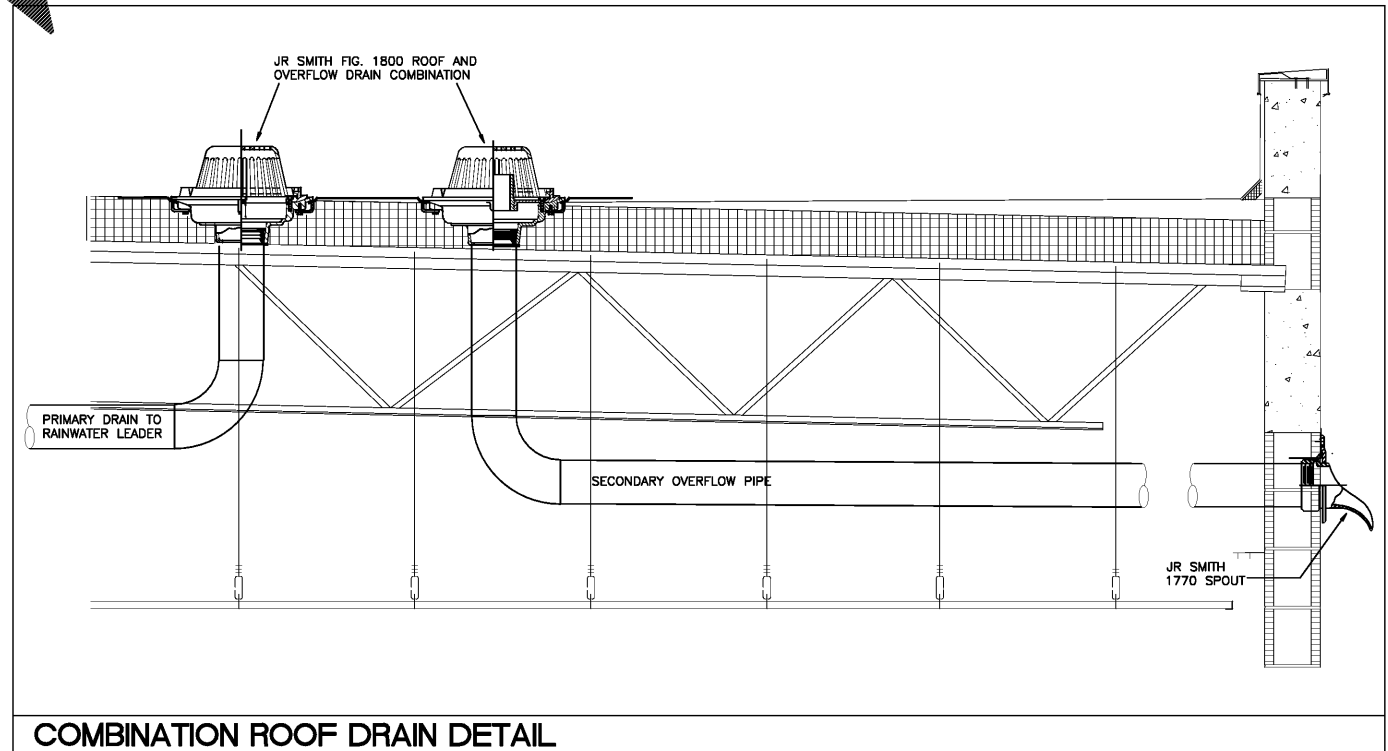
EXTERIOR CO DETAIL (ECO)



ELEVATOR SUMP PUMP WITH OIL GAURD



CLEANOUT DETAILS



COMBINATION ROOF DRAIN DETAIL

Order Plans @

HARVARD • JOLLY ARCHITECTURE
 2047 VISTA PARKWAY, SUITE 100 | WEST PALM BEACH, FL 33411 | www.harvardjolly.com | AAC000119

JLD
 JOHNSON, LEVINSON & RAGAN, DAVIS, INC.
 1450 Centrepark Boulevard, Suite 350
 West Palm Beach, Florida 33401
 (561) 689-2103 (561) 689-2102 Fax
 www.jld.com
 Certification Number 6059
 Michael P. Landrum, P.E. 30594
 Charles C. Chalkman, P.E. 31936

**STEM BUILDING
 THE BENJAMIN SCHOOL - LOWER/MIDDLE SCHOOL**
 11000 Ellison Wilson Road, North Palm Beach, FL 33408
 CONSTRUCTION DOCUMENTS

Contract No:	16117.00	
Job No:	117030	
Date:	10-23-17	
Drawn:	GSQ	
Revisions		
No.	Date	Note

TO THE BEST OF MY KNOWLEDGE, THE PLANS AND SPECIFICATIONS COMPLY WITH THE MINIMUM BUILDING CODES.

© 2017 HARVARD JOLLY, INC.

JLD Project #117030